



Line 3 Replacement Project Summary

**“Our role comes
with tremendous
responsibility.
That’s why safety
and operational
reliability is our
number 1 priority.”**

Al Monaco, President and CEO



Table of Contents

About Enbridge.....	4
Line 3 Pipeline History.....	5
Line 3 Serves as a Vital Energy Link.....	6
Line 3 Replacement Program.....	8
Line 3 Maintenance and Integrity Program.....	12
Line 3 Preferred Route.....	14
Potential Environmental Impacts of Line 3 Preferred Route.....	16
Right-Of-Way Preparation and Construction Sequence.....	18
Line 3 Deactivation.....	22
Commitment to Safety.....	24
Public Participation.....	27

About Enbridge

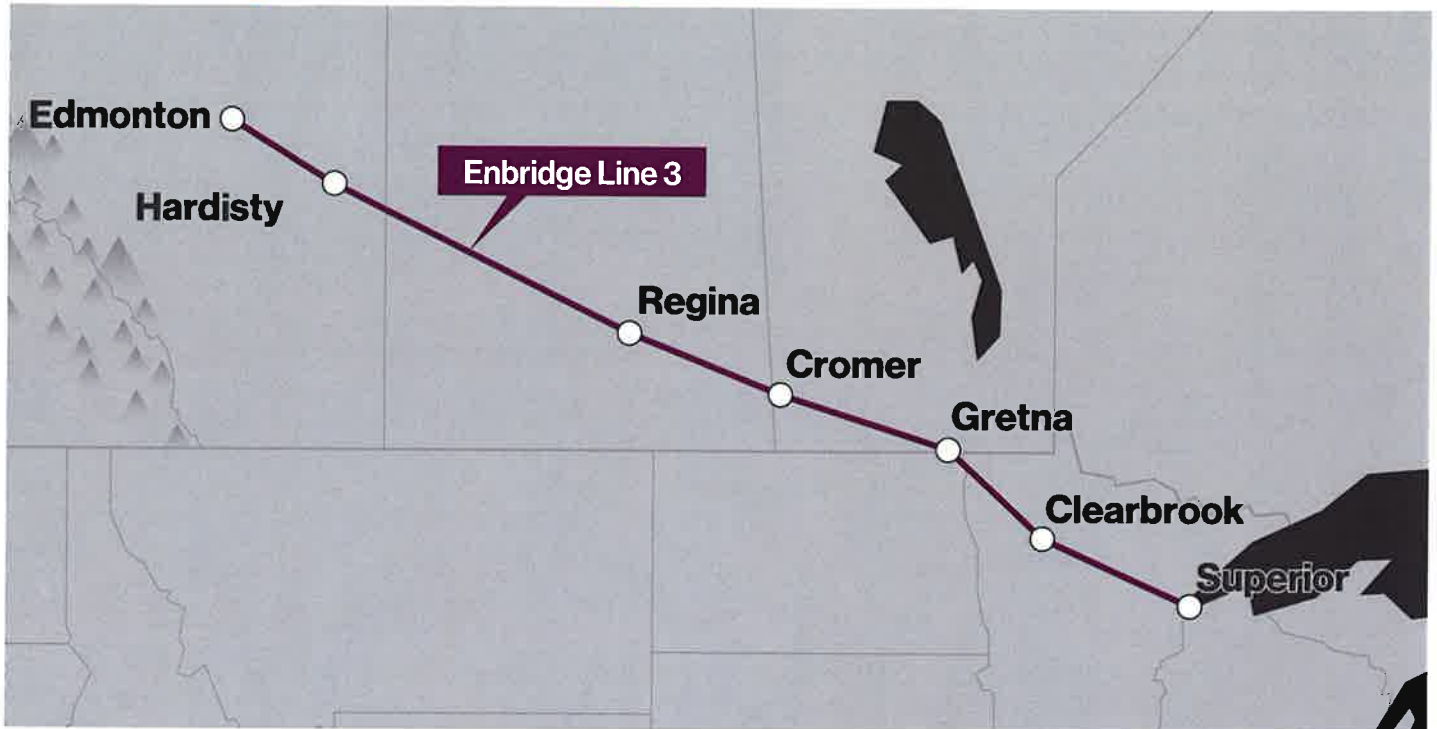


- We transport energy; operating the world's longest, most sophisticated liquid petroleum transportation system.
- We have provided safe and reliable energy transportation in North America for more than 65 years.
- We deliver more than 2 million barrels of crude oil daily.
- We continue to invest billions of dollars to enhance Enbridge's ability to

transport supplies of crude oil to North American refineries, helping support North American energy independence.

- Our corporate headquarters are in Calgary, Alberta and Houston, Texas with offices in Superior, Wisconsin; Duluth and Edina, Minnesota; Griffith, Indiana; Minot, North Dakota; and Cushing, Oklahoma, along with regional offices along the system route.
- We employ 11,000 people, of which 6,500 are employed in the U.S.

Line 3 Pipeline History



Line 3 was constructed in the 1960s and put into service in 1968. The existing Line 3 is a 34-inch diameter, 1,097 mile long pipeline, which extends from Alberta, Canada to Superior, Wisconsin. Line 3 has transported a variety of crude oil based on shipper demand. Minnesota relies on the extensive Enbridge Mainline System pipeline network to provide crude oil to its two large refineries located in and around Minneapolis and St. Paul.

Since it began operating in the late 1960s, the annual average capacity of Line 3 has varied between a low of 390,000 barrels per day (bpd), which is the current operating capacity of the line, and a much higher capacity, in the range of 760,000 bpd.

Historically, Line 3 has played and continues to play an important and integral role in delivering crude oil to Minnesota, Wisconsin, and other North American refineries.



Enbridge Mainline pipeline construction from the 1960s.

Line 3 serves as a vital link from North American production regions to Minnesota, Wisconsin, and other North American refinery markets and on to North American consumers. In 2014, Enbridge's pipelines transported over 53 percent of total U.S.-bound Canadian crude oil. Enbridge meets nearly 80 percent of refining demand in Minnesota.



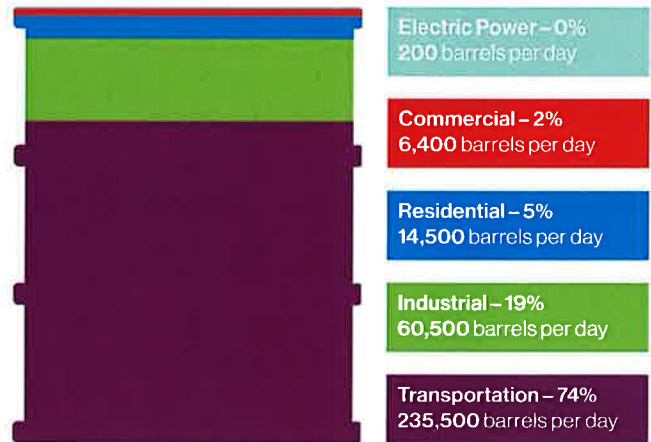
Line 3 Serves as a Vital Energy Link

Our goal is to invest wisely in infrastructure to support the needs of shipping and refining customers so they can in turn meet North Americans' needs for fuels, asphalt and the raw materials used to make fertilizers, solvents, plastic materials, and other products we all use every day.

U.S. demand for Canadian crude oil transported on the Enbridge Mainline System has increased significantly in recent decades. As a result, demand for capacity to ship crude oil on the Enbridge Mainline System continues to exceed available pipeline capacity, even after Enbridge's recent projects have improved efficiency and added capacity to transport additional oil. For example, in the first few months of 2015, Minnesota refineries' demand exceeded supply by 5.5 percent for light Canadian crude and 35 percent for heavy Canadian crude. A viable, reliable pipeline network must exist to satisfy the refiners' demand for Western Canadian supply.

Minnesota refineries including Flint Hills and Northern Tier St. Paul rely on Canadian crude oil. The Enbridge Mainline System has been serving the needs of Minnesota refineries for decades. Line 3 is a vital component of this System. The Line 3 Replacement Project will help ensure that Enbridge continues to meet the needs of our shippers, regional refineries, and beyond.

2012 Minnesota Petroleum Consumption by Customer Sector*

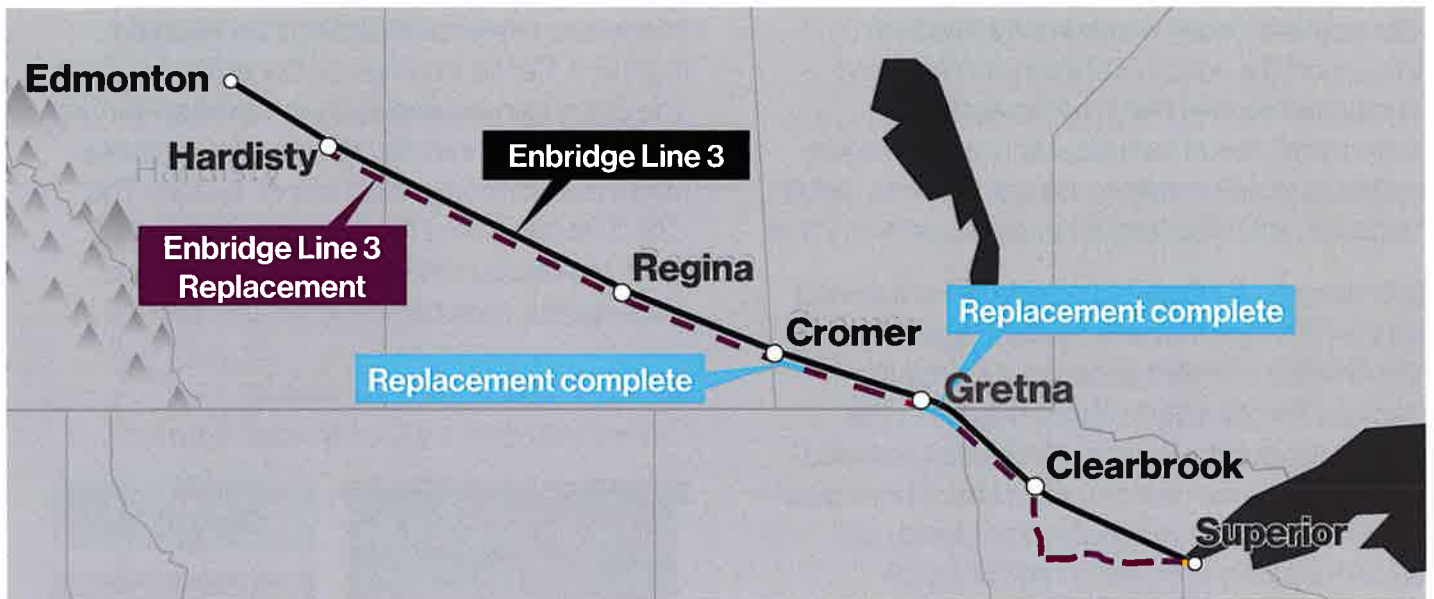


*U.S. Energy Information Administration



In 2014, Enbridge transported over 74 percent of the crude oil imported from Canada and consumed in the Midwest, in states including North Dakota, South Dakota, Nebraska, Missouri, Minnesota, Iowa, Oklahoma, Kansas, Illinois, Tennessee, Wisconsin, Michigan, Ohio, Indiana, and Kentucky.

Line 3 Replacement Program



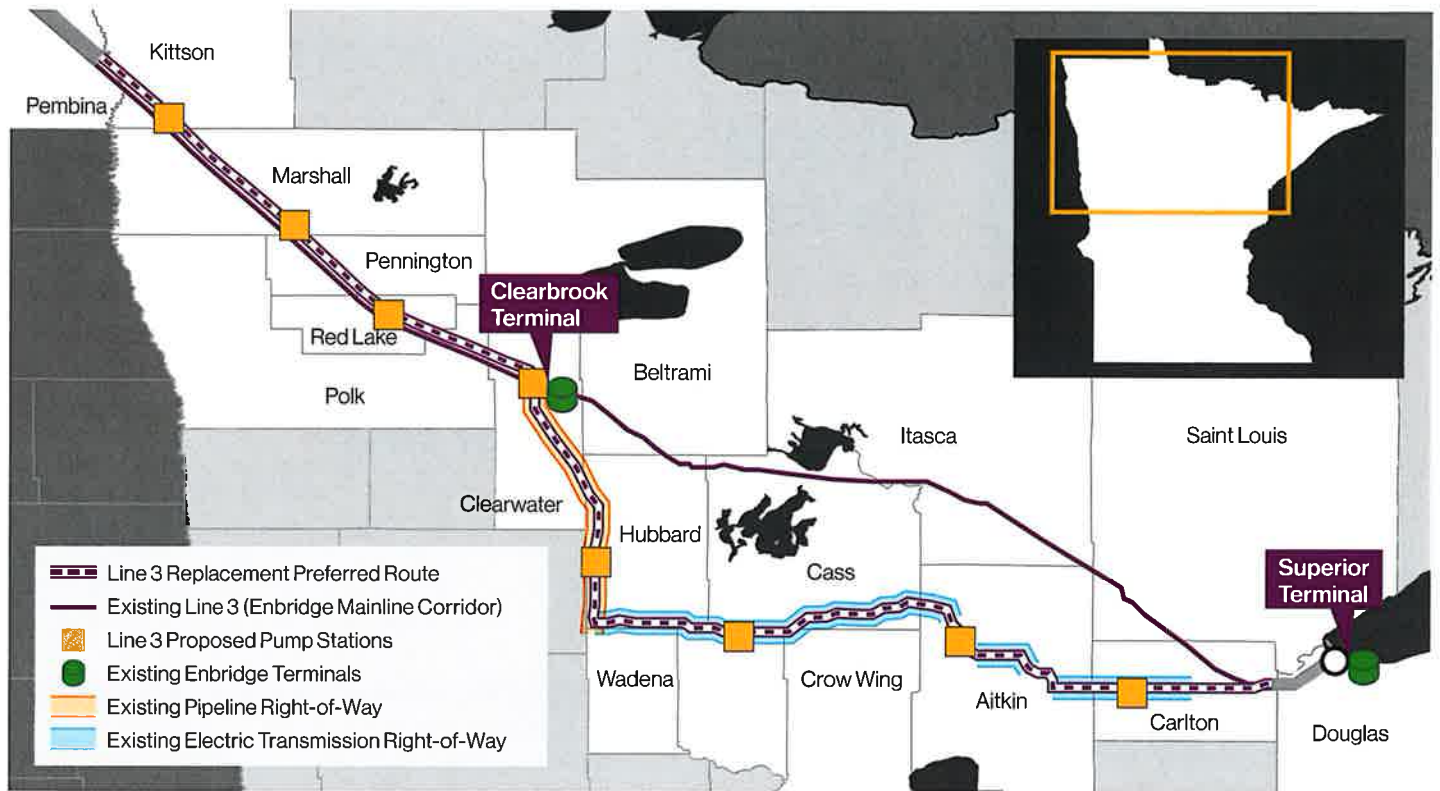
Enbridge Energy, Limited Partnership's ("Enbridge") maintenance driven Line 3 replacement will reduce future repair activities and resulting disruptions to landowners and the environment, as well as restore the historical operating capabilities of Line 3, and promote energy efficiency of Enbridge's Mainline System. A new 36-inch diameter pipeline will replace the existing 34-inch diameter pipeline along most of the Line 3 route.

This is an integrity and maintenance driven Program.

The Program's Background:

- Line 3 is a 1,097-mile crude oil pipeline extending from Edmonton, Alberta to Superior, Wisconsin, and is an integral part of Enbridge's Mainline System. Line 3 was installed in the 1960s.
- Line 3 Replacement Program consists of 1,031 miles of 36-inch diameter pipeline that begins in Hardisty, Alberta and ends in Superior, Wisconsin.
- The U.S. portion includes about 13 miles in North Dakota, 337 miles in Minnesota, and 14 miles in Wisconsin.
- The Program is an approximate \$7.5 billion private investment (\$2.6 billion for the U.S. portion), making it one of North America's largest infrastructure programs, which supports North American energy independence.

Line 3 Replacement Project



The U.S. portion of the Program Enbridge is proposing, is referred to as the Line 3 Replacement “Project.”

Project Description in Minnesota

- 337 miles of 36-inch diameter pipeline in Minnesota to replace existing 282 miles of 34-inch diameter pipeline.
- Construction of eight pump stations.
- Includes 27 strategically placed valves.
- Restore historical operating capabilities and move 760,000 barrels per day (bpd).
- Enable Enbridge to better respond to variable refinery needs, now and in the future, as well as unplanned disturbances to North American crude oil network.
- Reduce power requirements on a per barrel basis.
- Minimize the impact of planned maintenance on the Enbridge Mainline System to shippers and refiners.

- \$2.1 billion investment for the Minnesota portion of the design, permit and construction of Line 3.
- In Minnesota, the replacement pipeline will follow existing utility corridors for more than 98 percent of the route west of Clearbrook and 75 percent east of Clearbrook.
- Project applications are being reviewed by the Minnesota Public Utilities Commission (MPUC), and upon receipt of all applicable regulatory approvals, construction can begin.

Anticipated Project Timeline in Minnesota (pending regulatory approval)

- | | |
|-----------|---|
| 2016 | Construction begins |
| Late 2017 | The replacement pipeline is placed into service in late fall or winter |
| 2018 | The existing pipeline is taken out of service and restoration of land disturbed during construction continues |

Petroleum Transportation

Line 3 Replacement pipeline = 760,000 bpd. This is the equivalent of more than:



10,000
rail cars per day



24,000
tanker trucks per day

Project Benefits

Jobs: Create thousands of family-sustaining construction jobs, and provide new business opportunities for contractors for design, survey, environmental assessment, and project planning.

Economic Activity: Significant boost to the U.S. economy during design and construction; local and regional economic boost during construction from the purchase of local products/materials and use of local hotels, restaurants and services.

Long-term Property Tax Revenues: Enbridge paid more than \$34 million in Minnesota property taxes in 2011; this will increase incrementally by \$19.5 million beginning the first full year of service.

Support for Minnesota Refineries: Reduced apportionment, continued reliable crude oil delivery, and energy cost savings on a per barrel basis for Minnesota refineries.

Line 3 Replacement will provide almost immediate economic benefits to Minnesota communities. From restaurants to hotels, retail shops to gas stations, campgrounds to car dealerships, thousands of dollars will be spent near the pipeline route.

Testimonials



Doug Lindgren, owner
Harwood Oil
Bagley, MN

"Business is even greater than our vacationer business when construction activity is going on."



Burl Ives, general manager
Timberlake Lodge
Grand Rapids, MN

"We experienced at least a 35 percent jump in business during pipeline construction in 2009."



Lisa Biller, manager
T-59 Motel
Thief River Falls, MN

"We absolutely welcome pipeline workers."



Rick Filpula, maintenance manager
Community Campground
St. Hilaire, MN

"I definitely welcome pipeline workers and pipeline construction. All the businesses in town do."



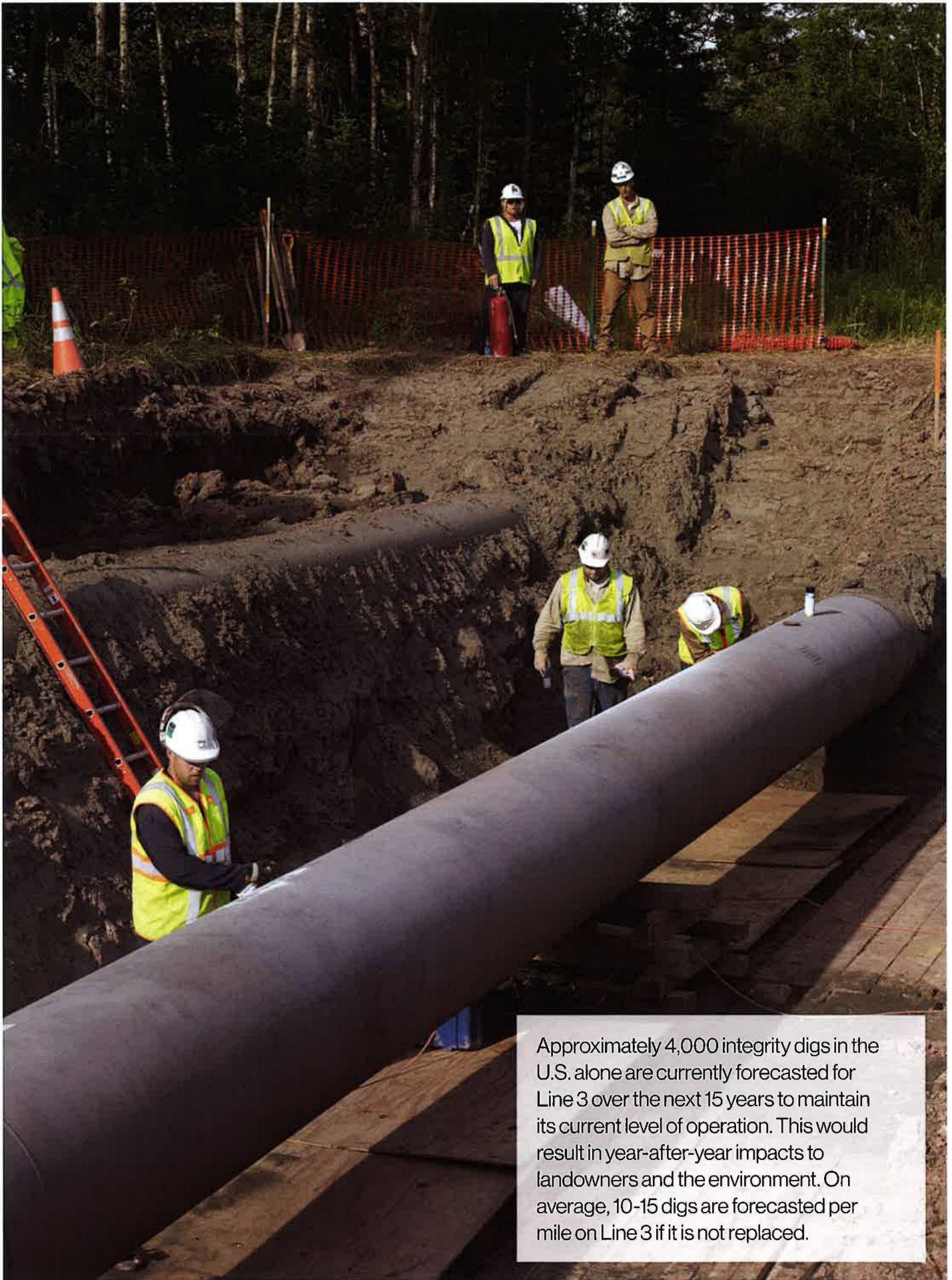
John Toman, fleet sales
Benna Ford
Superior, WI

"We feel a direct benefit when construction projects ramp up and it's across the board from sales to parts and service. We're grateful for the business."



Bill Batchelder, owner
Bemidji Woolen Mills
Bemidji, MN

"Pipeliners need clothing to stay warm and work boots, too. They spent on average about eight times as much as our regular customers when they came in. They were very patriotic."



Approximately 4,000 integrity digs in the U.S. alone are currently forecasted for Line 3 over the next 15 years to maintain its current level of operation. This would result in year-after-year impacts to landowners and the environment. On average, 10-15 digs are forecasted per mile on Line 3 if it is not replaced.

Line 3 Maintenance and Integrity Program

Safe and reliable operations have always been the foundation of Enbridge's business, and maintaining pipeline integrity is essential to continued safe and reliable operations.

As part of our maintenance program, Enbridge has gathered extensive integrity data on Line 3. The data has been analyzed, resulting in the need for a substantial number of integrity digs and repairs. Additionally, since 2008, Enbridge has voluntarily restricted pressure, reducing the average annual capacity of deliveries from 760,000 barrels per day (bpd) to 390,000 bpd.

While Line 3 could continue to be safely operated through the current maintenance plan, the dig and repair program will not restore the delivery capacity of the line. Replacement of Line 3 is the optimal solution to restore this pipeline to its historical operating capabilities.

Integrity Dig Steps



1 Identify dig site and strip topsoil where applicable



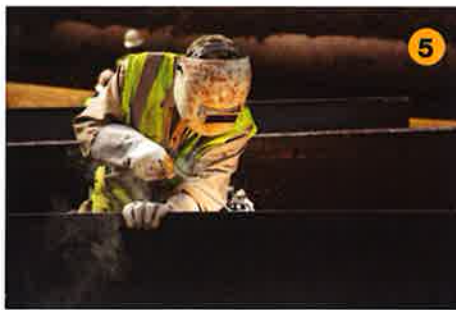
2 Excavate to expose the pipe



3 Clean the exposed pipe



4 Inspect the pipe



5 Repair the pipe segment, as necessary



6 Re-coat the pipe



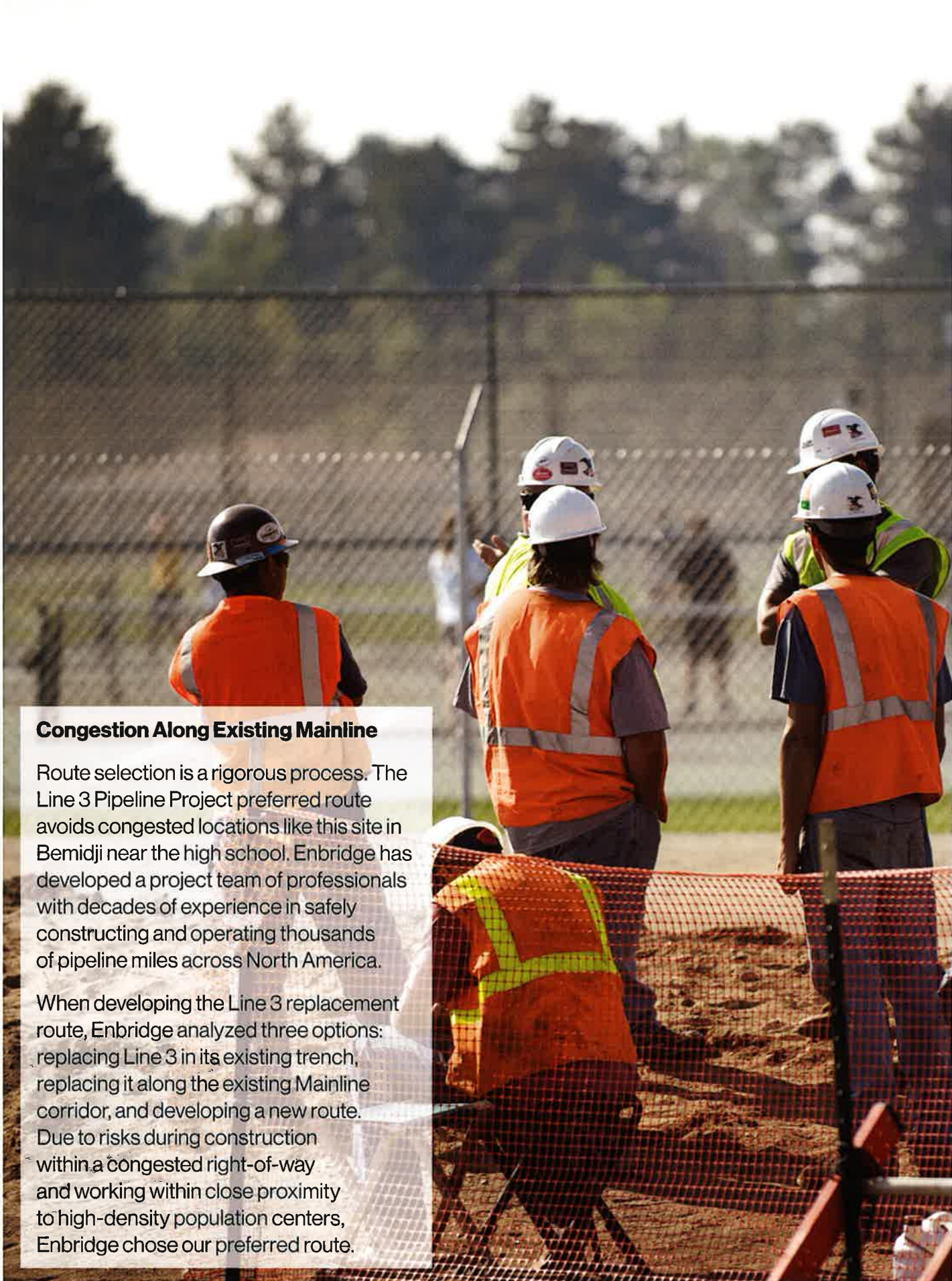
7 Backfill excavation and cleanup



8 Restoration



9 Restored right-of-way

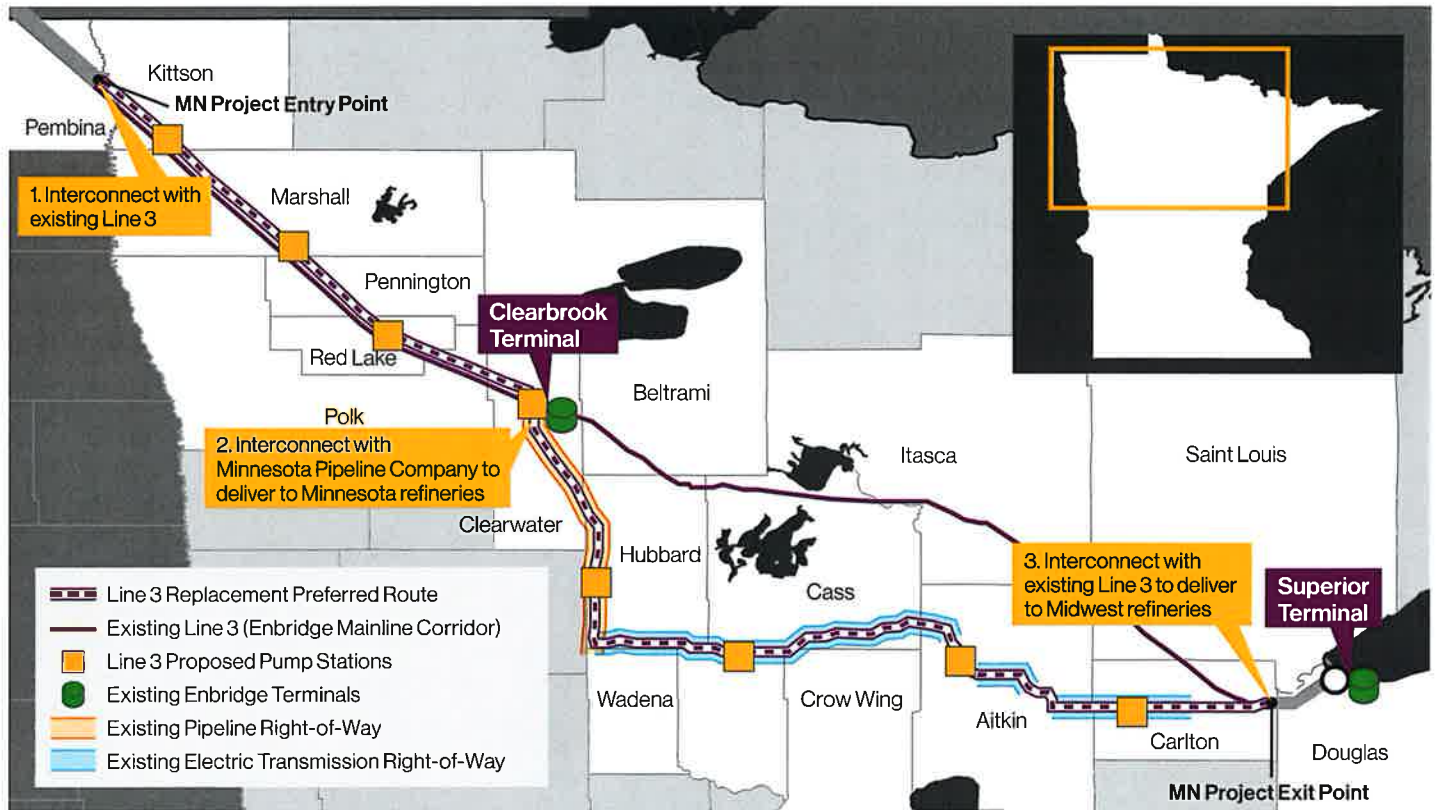


Congestion Along Existing Mainline

Route selection is a rigorous process. The Line 3 Pipeline Project preferred route avoids congested locations like this site in Bemidji near the high school. Enbridge has developed a project team of professionals with decades of experience in safely constructing and operating thousands of pipeline miles across North America.

When developing the Line 3 replacement route, Enbridge analyzed three options: replacing Line 3 in its existing trench, replacing it along the existing Mainline corridor, and developing a new route. Due to risks during construction within a congested right-of-way and working within close proximity to high-density population centers, Enbridge chose our preferred route.

Line 3 Preferred Route



Any route that does not meet the three initial requirements (as identified above) would not meet the purpose of the Project, and such routes were not considered by Enbridge in its development of the Project's preferred route.

Route Selection Process

Enbridge developed the Project's preferred route based on its extensive pipeline routing experience, knowledge of applicable federal and state regulations, as well as agency, landowner and other input.

Enbridge first considered where the Project must enter, deliver within, and exit Minnesota in order to meet the needs of shippers served by Line 3. Enbridge next identified and analyzed routing constraints and opportunities, and identified and analyzed route alternatives.

Once a general route location was identified, Enbridge conducted detailed environmental and engineering survey work to further refine the route to avoid or minimize human and environmental impacts, as well as identify appropriate mitigation measures to limit potential impacts during Project construction and operation. The resulting preferred route meets the Project's purpose, maximizes opportunities for co-locating within a utility corridor, and minimizes potential impacts.



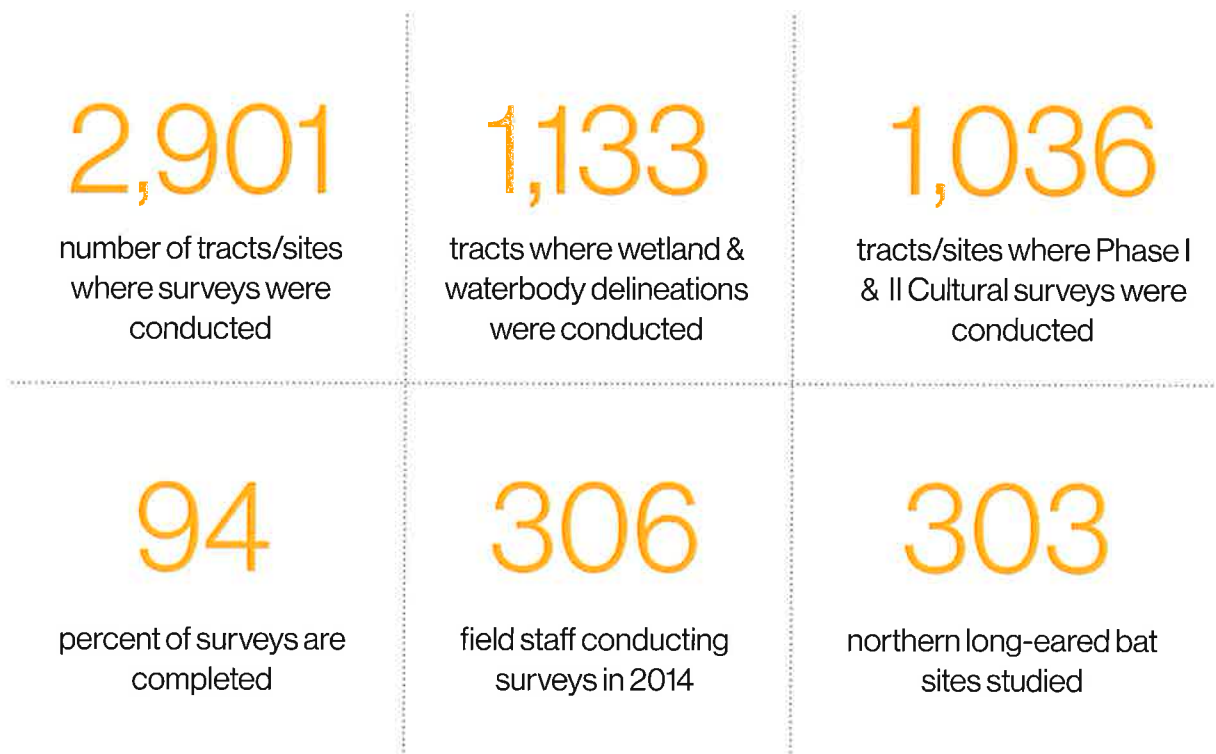
Existing Enbridge Mainline

Enbridge's existing mainline system crosses the Mississippi River, pictured here along Highway 2. Horizontal directional drilling (HDD) was successfully used to install Line 67 in 2010. Enbridge has safely operated our pipeline system through environmentally sensitive areas such as this for 65 years.

Potential Environmental Impacts of Line 3 Preferred Route

The Project route, facility design, and construction procedures have been designed to minimize impacts on the environment. Environmental impacts associated with construction of the pipeline will primarily be related to temporary disturbance to land, wetlands, and waterbodies. Environmental impacts associated with operations of the pipeline will primarily be related to maintenance repairs and mowing activities.

In 2014, Enbridge started working with federal, state, and local regulatory agencies to design Project plans and permit conditions to minimize impacts to the environment. In fact, Enbridge has already committed to a variety of resource-specific mitigation measures. Enbridge will also retain environmental inspectors (EIs) during Project construction who will be responsible for understanding all regulatory requirements and permit conditions, and ensuring that contractors abide by these conditions. The Project will also be supervised by third-party environmental monitors who will report any concerns directly to appropriate agencies.



Right-of-Way Preparation and Construction

Planning for any pipeline project begins years in advance of actual construction. Initial steps in the planning process include determination of demand from refineries, pipeline design, route alternatives and selection, environmental assessments, public consultation, landowner negotiations and government permitting. Once these steps are complete, the construction process can begin.

The illustrations below show the general process beginning with surveying the route. Then, the right-of-way is cleared. Topsoil is carefully separated along the right-of-way. Pipe sections are then strung along the route. Materials are quality inspected from the factory and throughout the construction

process. Welders then fuse the pipe sections together into a continuous pipeline. All welds are inspected for integrity. A trench for the pipeline is dug generally three to five feet. Depending on the location of the pipeline and where it is crossing, depth of ground cover may increase. The pipeline is carefully set into the trench. Hydrostatic testing is performed prior to placing a new pipeline into service to further measure safe operating pressures. Soil is replaced and the right-of-way is restored following landowner agreements.





These two photos show the same location during construction in August 2013, and following construction in July 2014 as grass grows back over the Enbridge right-of-way in Kansas.

Committed to Successful Restoration of Our Pipeline Systems Rights-of-Way

Enbridge is responsible to landowners for all damages or impacts resulting from construction of expansion facilities, pipeline replacement projects or ongoing pipeline operations. To that end, we have plans and procedures to protect land before, during, and after construction. Enbridge uses approved and proven construction and land restoration techniques. Affected sites are checked throughout the remediation process to ensure restoration of the area has been completed satisfactorily.

Prior to construction activities, Enbridge representatives must obtain a number of regulatory approvals and environmental permits. These permits often prescribe practices and restoration expectations. Enbridge also meets with landowners to reach agreement on property-specific items that will be addressed during and after construction. Items on this “line list” may include landscaping, stacking timber, or special care to be taken when working around livestock.

Following Construction

Following construction of a new pipeline, the process of returning property to its agreed-upon condition generally engages multiple restoration crews spread out along the pipeline right-of-way, with each crew working in a continual linear fashion. This process allows the work to be completed as efficiently as possible.

Enbridge works with approved plans and easement agreements. Weather and road weight restrictions can influence restoration timelines. To ensure a successful restoration, we continue to monitor the restoration in compliance with various environmental permit requirements and Enbridge's routine pipeline patrol and maintenance procedures. If further efforts are needed to complete restoration commitments, we will take the appropriate follow-up action.

Restoration Process

- Crews begin by removing equipment and construction debris, and de-compacting soil in farm fields while restoring rough grade.
- Next, crews replace separated topsoil, seed, mulch, repair fences, and remove construction mats, bridges, and access points.
- Environmental and utility crews will also be mobilized to respond to subsidence and/or drainage issues that create access problems for farmers or landowners, public safety issues, or environmental compliance issues.
- Most restoration occurs within the first year following completion of construction, however the process can take longer depending on weather and other environmental impacts that may interrupt the restoration process. The initial phase involves a more visible presence of workers but crew sizes vary based on the required work.

Coordinating Restoration with Landowners

Following construction, Enbridge representatives contact landowners to review "line list" items, and discuss what items need to be addressed to complete restoration on their property. The "line list" provisions can be attached to easement agreements and amount to an agreement between Enbridge and the affected landowners, giving them an added measure of assurance that the company will perform as indicated. Enbridge is fully committed to the protection of the environments along our pipeline route as well as being a good neighbor to landowners and in the communities in which we operate, and where our employees live.



Above Ground Facilities

Above ground facilities for the Project include valves and pump stations.





In-line Cleaning Tools

The deactivation process includes the use of polyurethane in-line tools with a combination of cups and disks (pictured here). These tools are used to clean the pipeline of oil.



Line 3 Deactivation

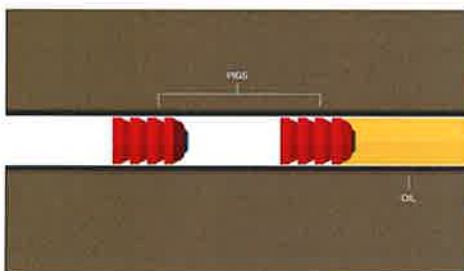
Enbridge will continue to operate the existing pipeline safely while the new pipeline is installed because refineries in the Midwest served by the pipeline rely on continuous deliveries of crude oil to provide the gasoline, heating oil, and other products that we use every day.

Once the replacement pipeline becomes operational, the existing Line 3 will be permanently deactivated.

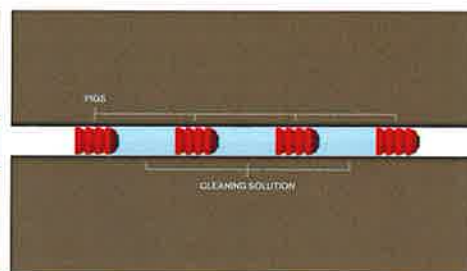
- The oil is removed;
- The pipe is cleaned;
- The pipeline is safely disconnected and isolated from facilities;
- Corrosion controls will be maintained to ensure structural integrity; and,
- The deactivated pipeline will remain in place.

Enbridge is responsible for our pipelines, whether or not those pipelines are active. We will continue to monitor the deactivated pipeline and maintain the right-of-way.

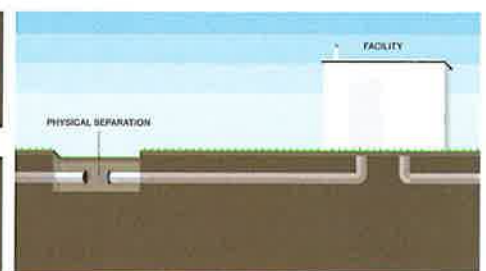
Deactivation Process



1. Remove the Oil from the Pipeline: The vast majority of crude oil is removed from the pipeline using specially designed cleaning instruments.



2. Clean the Pipeline: A combination of cleaning instruments and cleaning solution is used to wipe and clean the pipeline.



3. Disconnect the Pipeline: The pipeline is physically disconnected and sealed off from active operational facilities like pump stations to prevent oil from re-entering the system.



4. Monitor the Pipeline: Cathodic protection will continue to be applied to the deactivated pipeline.



5. Monitor the Right of Way: Monitor the right-of-way with regular pipeline patrols, pipeline signs indicating approximate location, depth of cover surveys and "Call Before You Dig" Programs.



Pipeline Safety

Enbridge's primary goal is to safely deliver crude oil with zero incidents, while maintaining the safety of its work force, the public, and the environment. By continuously improving existing practices and processes, Enbridge seeks to provide world-class performance, resulting in public and personal safety, care for the environment, reliability, and efficiency. Enbridge's policies and standards are in accordance with regulations and industry standards. Through its efforts, Enbridge works to prevent incidents and unintentional releases that can have a serious impact on people, the environment, and our assets.

Pipeline markers like the one in the photo identify the existence of pipelines.

Commitment to Safety

The safety of the public, our communities and our employees is Enbridge's top priority. To ensure the safe construction and operation of our pipelines, we are committed to safety in our processes, our people and our technologies.

As part of our commitment to the safe and responsible operation of our pipelines, we employ comprehensive preventative measures.

- High-quality pipeline material, anti-corrosion coatings and cathodic protection (a low-level direct current to inhibit corrosion)
- Pressure testing of new and existing pipelines
- Inspection and preventative maintenance programs
- Monitoring of pipelines and related facilities
- Frequent aerial and periodic ground surveys of the right-of-way
- Automatic shut-off valves and remote control valves
- State-of-the-art control center for immediate response in the event of a change in pressure or volume
- Emergency response preparedness training and drills for employees and third-party emergency responders



Construction Safety

- 100 percent of our construction welds are inspected using radiography or ultrasonic testing
- Extensive inspections conducted throughout the Project's process
- Internally inspected and pressure tested before being placed into service
- Cathodic protection system is applied to the pipe and facilities to inhibit corrosion



Maintenance Safety

- Monitored 24-hours a day by our computerized Pipeline Control System and trained controllers
- Comprehensive preventive maintenance on our pipelines and facilities
- Extensive worker training program
- Public awareness outreach
- Periodic internal inspections of our pipelines
- Aerial patrols of our pipeline system rights of way and facilities are conducted twice a month

Emergency Preparedness

- **Response Training** – Our exercises are performed with a variety of scenarios, locations, and at all times of the year. We share lessons learned within our company, with industry, and with local responders. Proven techniques and equipment are used during training exercises and strategically positioned across our pipeline system for immediate access in an emergency.
- **Pipeline Maintenance (PLM)** – Four strategically located facilities across Minnesota from the North Dakota border to the Wisconsin border are staffed by four to six trained personnel and staged with emergency response equipment. If the proposed pipeline is approved, additional crews and facilities will be added for the new route.
- **Safe Communities Program** – This program is dedicated to providing grants to first responder organizations located along our pipeline route.
- **Understanding Our Products** – Enbridge crews and local responders are familiar with our pipeline system and the petroleum products we transport. We have Material Safety Data Sheets (MSDS) that describe the various grades of crude oil and petroleum we carry that provide an additional resource so workers in close proximity to the products are aware and protected.
- **Public Awareness** – Annual mailings, in-person and group meetings are in place to reach out to people who live and work along our pipeline system.
- **Community Relationships** – Our monitoring, testing, maintenance, response training, and community awareness together support overall pipeline safety. Enbridge maintenance and field employees go through annual training and we regularly invite participation from local first responders along our pipeline route and near our facilities.

Minnesota Participation

more than
147

registered for online emergency responder training

more than
59

registered for online 911 dispatcher training program



Enbridge purchased a specially designed helicopter based out of Bemidji that will continue our aerial patrol program

19
exercises

Enbridge response teams conducted 19 emergency response exercises in the Superior Region during 2014.

\$36,500

In 2014, we contributed \$36,500 to Minnesota emergency response agencies through our Safe Community Program and have donated 15 fleet vehicles to first responders over the past five years

Public Participation

It has always been evident to Enbridge that construction of a pipeline starts with open and frank discussions within the community. To that end, Enbridge has and will always be committed to meaningful and robust communication and dialogue throughout the development, construction, and operation of the Project. As with all of its projects, Enbridge's goal is to provide Project information to, receive input from, and address questions and concerns raised by those affected by the pipeline.

To achieve this goal, Enbridge developed a Line 3 public outreach plan designed to provide a variety of ways for all interested parties to obtain information about and provide input regarding the Project. Enbridge has identified and reached out to landowners likely to be affected by the Project, elected and public officials at all levels of government (federal to township), emergency responders, business and environmental groups, community groups, other interested parties, and the public. This initial approach to public outreach provides opportunities for stakeholders to provide input and learn about the Project in its early stages.

Enbridge's outreach activities include, but are not limited to, providing listening sessions and open houses in communities along the Project's preferred route, sending Project introductory letters to elected officials and potential landowners along the preferred route, creating news releases and media advisories, publicly-available fact sheets and survey results, leading one-on-one meetings with individuals and local groups, and offering various means by which the public can connect with Project representatives. Enbridge will continue these activities throughout the life of the Project.



Stay Informed

The Minnesota Public Utilities Commission's (MPUC) process provides multiple opportunities for public participation, including public meetings and public comment periods. Minnesotans can stay informed and follow the progress of regulatory approvals by visiting the MPUC's website at www.mn.gov/puc.

- Simply click on "eFiling and eDockets" and go to "Search Documents" where you can look for the docket number that applies to the particular project (Route Permit - PL-9/PPL-15-137, Certificate of Need - MPUC Docket No. PL-9/CN-14-916).

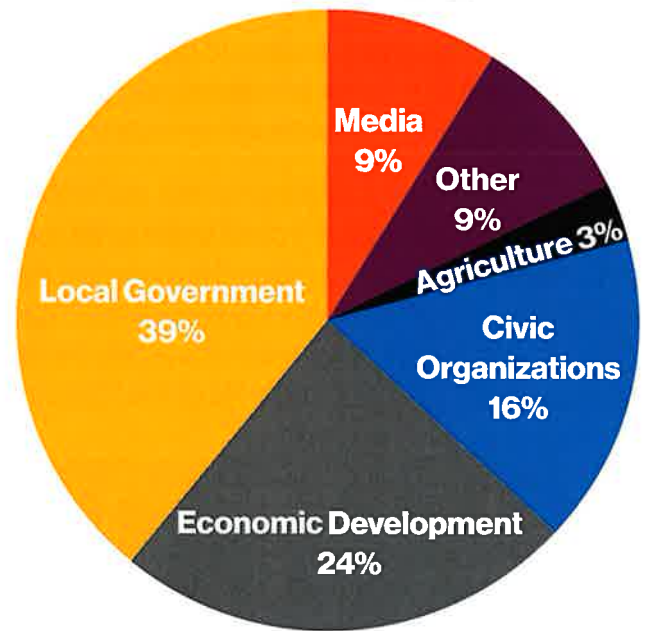
Commitment to Public Outreach

In addition to the open houses held in December 2014, Enbridge's public outreach efforts have included one-on-one meetings with individuals, agricultural-based organizations, business organizations, civic organizations (including environmental and conservation organizations), state and local governments, and media organizations. Between March 2014 and April 2015, more than 300 meetings were held with stakeholders along the Project's Preferred Route to present Project information and answer questions and concerns about the Project. Enbridge will continue to meet with stakeholders throughout Project development to listen to input and share information regarding the Project.

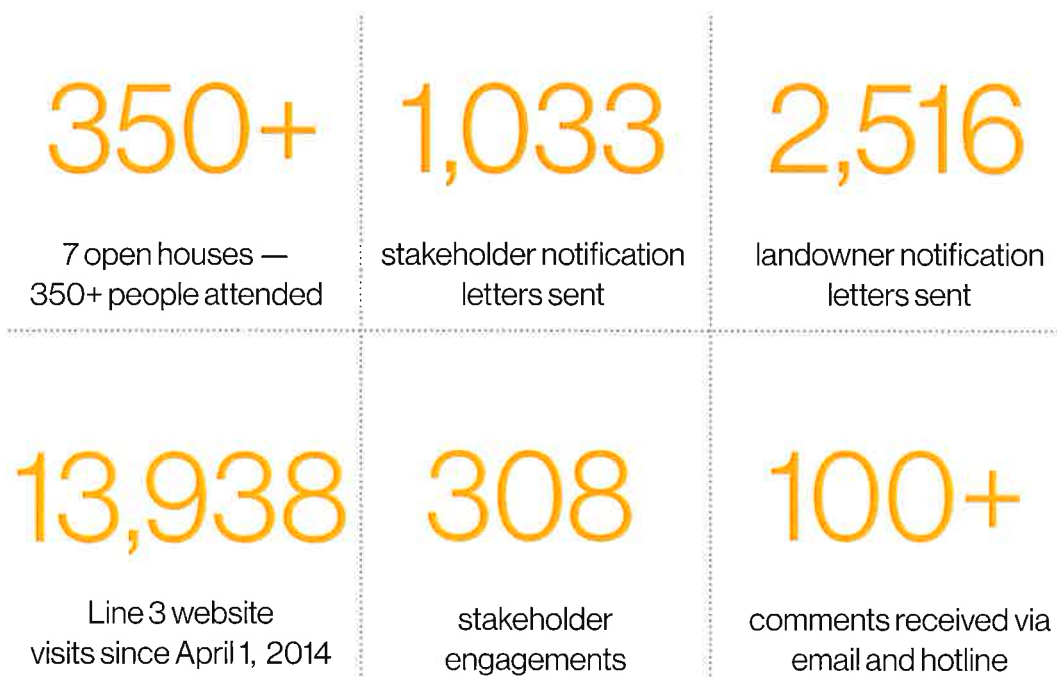
Project Contacts:

- Website: www.enbridge.com/Line3
- Email: Line3ReplacementProject@enbridge.com
- Toll-free number: 1-855-788-7812
- Mailing address: **Enbridge Energy**
Line 3 Replacement Project
1409 Hammond Avenue
Superior, WI 54880

Public Outreach by Type

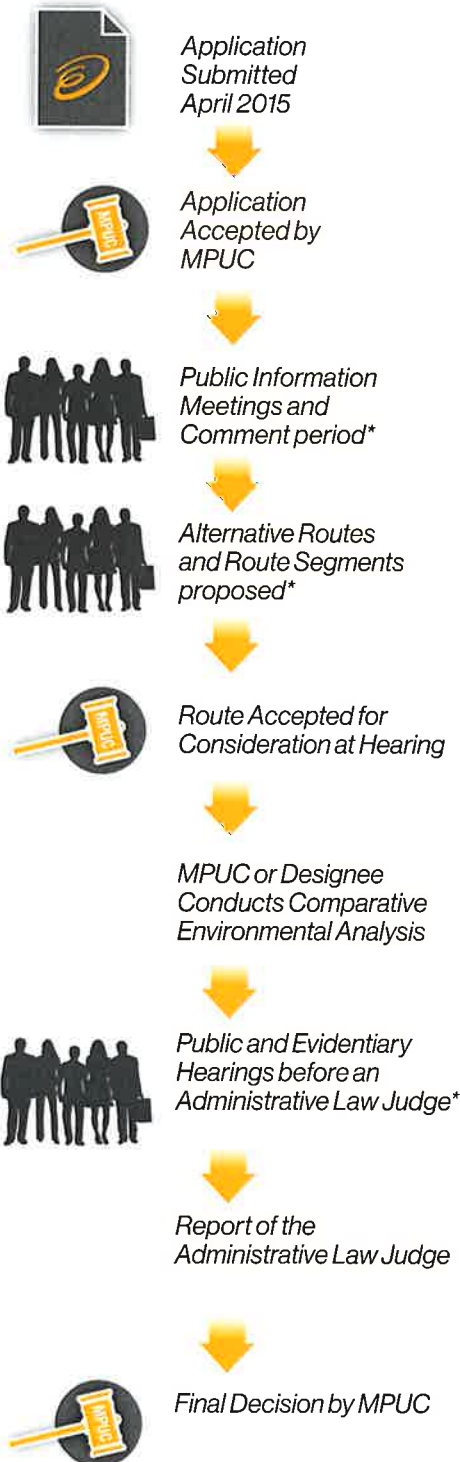


Public Participation and Agency Coordination by the Numbers



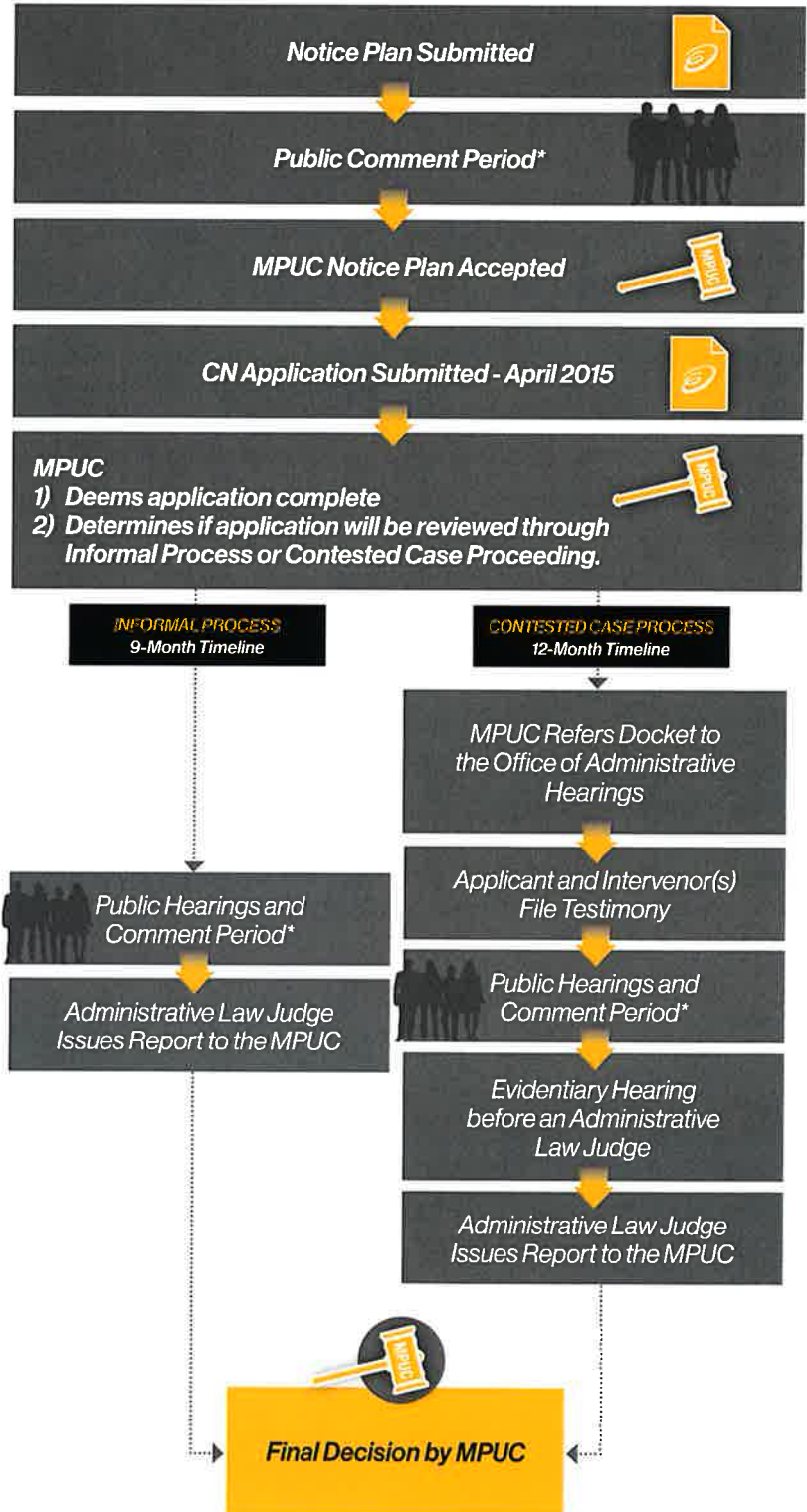
Line 3 Minnesota Regulatory Process

ROUTE PERMIT PROCESS MPUC DOCKET NO. PL-9/PPL-15-137



*Public participation opportunities

CERTIFICATE OF NEED (CN) PROCESS MPUC DOCKET NO. PL-9/CN-14-916



*Public participation opportunities

Take Action—

Five ways to show your support:



1. Share your support in conversation



2. Write a letter to the editor of a local or regional paper



3. Follow us on social media



4. Sign up for our newsletter to keep in touch



5. Watch for announcement of public comment period

Line 3 Replacement Project

Toll-free phone number: **1 (855) 788-7812**

Email: **Line3ReplacementProject@enbridge.com**

Mailing address: **1409 Hammond Avenue
Superior, Wisconsin 54880**





Daniel P. Wolf

Daniel P. Wolf, Executive Secretary
Public Utilities Commission



**NOTICE OF APPLICATION ACCEPTANCE -
PUBLIC INFORMATION AND
ENVIRONMENTAL ANALYSIS SCOPING MEETINGS**

Issued: July 20, 2015

In the Matter of the Applications of Enbridge Energy, Limited Partnership for a Certificate of Need and a Pipeline Routing Permit for the Line 3 Pipeline Replacement Project in Minnesota from the North Dakota Border to the Wisconsin Border

Public Utilities Commission (PUC) Docket Numbers: PL-9/CN-14-916 – Certificate of Need
PL-9/PPL-15-137 – Route Permit

Project Description

Enbridge Energy, Limited Partnership (Enbridge) proposes to:

- Replace 282 miles of its existing 34-inch diameter Line 3 pipeline with 337 miles of 36-inch diameter pipeline
- Follow the existing Line 3 from the Minnesota-North Dakota border to Clearbrook
- Follow the same route proposed for the Sandpiper pipeline (PUC Docket Number 13-474) from Clearbrook to the Minnesota-Wisconsin border
- Permanently deactivate the existing Line 3 in-place after the replacement pipeline is in service
- Upgrade pump stations at Clearbrook, Donaldson, Plummer, and Viking
- Build new pump stations at Backus, Cromwell, Palisade, and Two Inlets

The proposed project is located in Aitkin, Carlton, Cass, Clearwater, Crow Wing, Hubbard, Kittson, Marshall, Pennington, Polk, Red Lake, and Wadena counties.

Enbridge states the project is needed to address safety and integrity issues associated with the existing Line 3 pipeline.

Meeting Information

- Each meeting starts on time.
- Arrive a few minutes early so you have time to sign in, pick up materials, and find a seat.
- State agency staff members run the meetings.
- Public Utilities Commission, Department of Commerce, and Enbridge staff will be available to answer questions about the permitting process and the project.
- You may add verbal comments, written comments, or both into the record.
- The Department of Commerce uses comments received at the meeting and during the comment period to develop the environmental analysis for this project.

DATE AND TIME	MEETING LOCATION
Tuesday, August 11, 2015 11:00am	<i>Hallock City Hall – Upstairs Auditorium</i> 163 3 rd Street SE, Hallock MN 56728
Tuesday, August 11, 2015 6:00pm	<i>Newfolden Community Center</i> 145 E 1 st Street, Newfolden MN 56738
Wednesday, August 12, 2015 6:00pm	<i>Ralph Engelstad Arena – Imperial Room</i> 525 Brooks Avenue, Thief River Falls MN 56701
Thursday, August 13, 2015 11:00am	<i>Plummer Senior Citizen Center</i> 185 Minnesota Street S, Plummer MN 56748
Thursday August 13, 2015 6:00pm	<i>Gully Community Center</i> 120 S Main St, Gully MN 56646
Monday, August 17, 2015 6:00pm	<i>Clear Waters Life Center – Gymnasium</i> 256 2 nd Avenue SW, Clearbrook MN 56634
Tuesday, August 18, 2015 6:00pm	<i>Rice Lake Community Center– Gymnasium</i> 13830 Community Loop, Bagley MN 56621
Wednesday, August 19, 2015 11:00am	<i>Park Rapids Century School – Cafetorium</i> 501 Helten Avenue, Park Rapids MN 56470
Wednesday, August 19, 2015 6:00pm	<i>Park Rapids Century School – Cafetorium</i> 501 Helten Avenue, Park Rapids MN 56470
Monday, August 24, 2015 6:00pm	<i>Pine River-Backus High School – Commons</i> 810 1 st Street N, Pine River MN 56474
Tuesday, August 25, 2015 11:00am	<i>McGregor High School – Gymnasium</i> 148 S 2 nd St, McGregor MN 55760
Tuesday, August 25, 2015 6:00pm	<i>McGregor High School – Gymnasium</i> 148 S 2 nd St, McGregor MN 55760
Wednesday, August 26, 2015 11:00am	<i>Carlton County Transportation Department</i> 1630 County Road 61, Carlton MN 55718
Wednesday, August 26, 2015 6:00pm	<i>Carlton County Transportation Department</i> 1630 County Road 61, Carlton MN 55718

- **Bad weather?** Find out if a meeting is canceled. Call (toll-free) 1-855-731-6208 or 651-201-2213 or visit mn.gov/puc

11:00am Meeting Agenda		6:00pm Meeting Agenda	
11:00-11:30	Formal presentations – <ul style="list-style-type: none"> • Public Utilities Commission • Enbridge • Department of Commerce 	6:00-6:30	Formal presentations – <ul style="list-style-type: none"> • Public Utilities Commission • Enbridge • Department of Commerce
11:30-12:30	Citizen Comments	6:30-7:30	Citizen Comments
12:30-12:45	Break	7:30-7:45	Break
12:45-2:00	Citizen Comments	7:45-9:00	Citizen Comments
2:00	Meeting Adjourns	9:00	Meeting Adjourns

Submit Comments, Alternative Routes, Route Segments, Project Alternatives

Topics Open for Public Comment:

- Please focus your comments on information that will help answer the following questions.
- In your comments, please state which question(s) you are addressing.
 1. What human and environmental impacts should be studied in the environmental analysis?
 2. Are there any specific methods to address these impacts that should be studied in the environmental analysis?
 3. Are there any alternative routes or route segments that should be considered? (Related to the *Route Permit*)

If proposing an alternative route or route segment, consider the following:

- Does the alternative address an unavoidable impact?
 - Does the alternative offer significant environmental or socioeconomic benefits compared to the proposed project?
 - Is the alternative feasible and prudent?
 - Does the alternative meet the described need and purpose for the project?
4. Are there any alternatives to the project that should be considered? (Related to the *Certificate of Need*)

If proposing an alternative to the project, consider the following:

- Project size – can a smaller or larger sized project better meet the decision criteria?
- Project type – can a different method (for example, existing pipeline, rail, or truck) meet the need?
- Project timing – is the project needed now or in the future?
- Is the alternative feasible and prudent?
- Does the alternative meet the described need and purpose for the project?

Comment Period Comments accepted through September 30, 2015
Please include the PUC Docket Numbers (*above*) in all communications.

Online mn.gov/commerce/energyfacilities/#comment

Email jamie.macalister@state.mn.us

U.S. Mail Jamie MacAlister, Environmental Review Manager
Minnesota Department of Commerce
85 7th Place East, Suite 500
St. Paul MN 55101

Fax 651-539-0109

Important Comments will be made available to the public via the Public Utilities Commission's and the Department of Commerce's websites, except in limited circumstances consistent with the Minnesota Government Data Practices Act. Personally identifying information is not edited or deleted from submissions.

Process Information

Before the project can be built, the Public Utilities Commission (Commission) must approve both a certificate of need and a pipeline route permit.

The certificate of need process determines the size, type and timing of the proposed pipeline and whether there is a better alternative for meeting Enbridge's stated need.

The pipeline route permit process designates the route for the pipeline and associated facilities and conditions for right-of-way preparation, construction, clean-up, and restoration. This process studies alternative routes and route segments for the pipeline.

At its July 1, 2015 meeting, the Commission determined Enbridge's certificate of need and pipeline route permit applications are complete. This means the company submitted all the information required to begin the review process. The Commission's decision-making process takes about twelve to fifteen months.

Department of Commerce Energy Environmental Review and Analysis staff prepares an environmental analysis for the certificate of need and a comparative environmental analysis for the route permit.

After the environmental review in each proceeding is completed, an Administrative Law Judge (ALJ) holds public hearings. You may speak at the hearings, ask questions, and submit written comments about the project.

After the public hearings, the Commission reviews all the information in the record, including written comments and comments received at the public hearings. The Commission's final decisions on the Line 3 certificate of need and route permit are expected by October 2016.

Eminent Domain: If issued a route permit by the Commission, Enbridge may use the power of eminent domain to take land for this project.

Any new easement or right-of-way agreements reached between Enbridge and landowners before a pipeline route permit is issued will not be considered in the Commission's final decision.

How to Learn More

Department of Commerce Project Website:

<http://mn.gov/commerce/energyfacilities/Docket.html?Id=34079>

Project Mailing List: Sign up to receive notices about project milestones and opportunities to participate (meetings, comment periods, etc.).

Contact docketing.puc@state.mn.us or 651-201-2204 with the docket number (*14-916* for Certificate of Need; *15-137* for Route Permit), your name, mailing address, and email address.

Full Case Record: All documents filed in these docket are available via the Commission's website at mn.gov/puc, select *Search eDockets*, enter the year (14) and the docket number (916) for Certificate of Need or the year (15) and the docket number (137) for Route Permit, select *Search*.

Subscribe to the Docket: Subscribe to receive email notifications when new documents are filed. Note - subscribing may result in a large number of emails.

1. mn.gov/puc
2. Select green box *Subscribe to a Docket*
3. Type your e-mail address
4. For *Type of Subscription*, select *Docket Number*
5. For *Docket Number*, select 14 in the first box, type 916 in the next box - Certificate of Need
6. For *Docket Number*, select 15 in the first box, type 137 in the next box - Route Permit
7. Select *Add to List*
8. Select *Save*

Community Locations: The certificate of need and route permit applications will be available at the following locations in communities crossed by the proposed pipeline:

- City Clerk
- County Auditor
- Township Clerk
- Public Library
 - Aitkin Public Library, 110 1st Avenue NE, Aitkin
 - Bagley Public Library, 79 Spencer Avenue SW, Bagley
 - Bemidji Public Library, 509 American Avenue NW, Bemidji
 - Bovey Public Library, 402 2nd Street, Bovey
 - Brainerd Public Library, 416 S 5th Street, Brainerd
 - Carlton Public Library, 213 Chestnut Avenue, Carlton
 - Cass Lake Community Library, 223 Cedar Avenue, Cass Lake
 - Cloquet Public Library, 320 14th Street, Cloquet
 - Coleraine Public Library, 203 Cole Street, Coleraine
 - Duluth Public Library, 520 W Superior Street, Duluth
 - Godel Memorial Library, 314 E Johnson Avenue, Warren
 - Gonvick Lake Agassiz Regional Library, 170 Main Street, Gonvick
 - Grand Rapids Public Library, 140 NE 2nd Street, Grand Rapids
 - Hallock Public Library, 101 1st Street E, Hallock
 - Kitchigami Regional Library, Wadena City Library, 304 1st Street SW, Wadena
 - Marble Public Library, 302 Alice Avenue, Marble
 - McGregor Public Library, 111 E Center Avenue, McGregor
 - Mount Royal Branch Library, 105 Mt Royal Shopping Circle, Duluth
 - Northwest Regional Library, 210 LaBree Avenue, Thief river Falls
 - Outing Volunteer Library, 6300 Woods Bay Drive NE, Outing

- Park Rapids Area Library, 210 W 1st Street, Park Rapids
- Pine River Public Library, 212 W Barclay Avenue, Pine River
- Red Lake Falls Public Library, 105 Champagne Avenue SW, Red Lake Falls
- Thief River Falls Public Library, 101 E 1st Street, Thief River Falls
- Walker Public Library, 207 4th Street, Walker
- West Duluth Branch library, 5830 Grand Avenue, Duluth

Available on CD: You may contact Enbridge Energy Limited Partnership to request the certificate of need and route permit applications on CD (see below).

Enbridge Energy Limited Partnership Project Information

www.enbridge.com/Line3ReplacementProgram or 1-855-788-7812

Minnesota Statutes and Rules: The certificate of need application is reviewed under Minnesota Statute 216B and Minnesota Rules Chapter 7853. The pipeline route permit application is reviewed under Minnesota Statute 216G and Minnesota Rules Chapter 7852.

Minnesota Statutes and Rules are available at www.revisor.mn.gov.

Project Contacts

Public Utilities Commission Public Advisor

Tracy Smetana at consumer.puc@state.mn.us, 651-296-0406 or 1-800-657-3782

Public Utilities Commission Energy Facilities Planner

Scott Ek at scott.ek@state.mn.us or 651-201-2255

Department of Commerce Environmental Review Manager

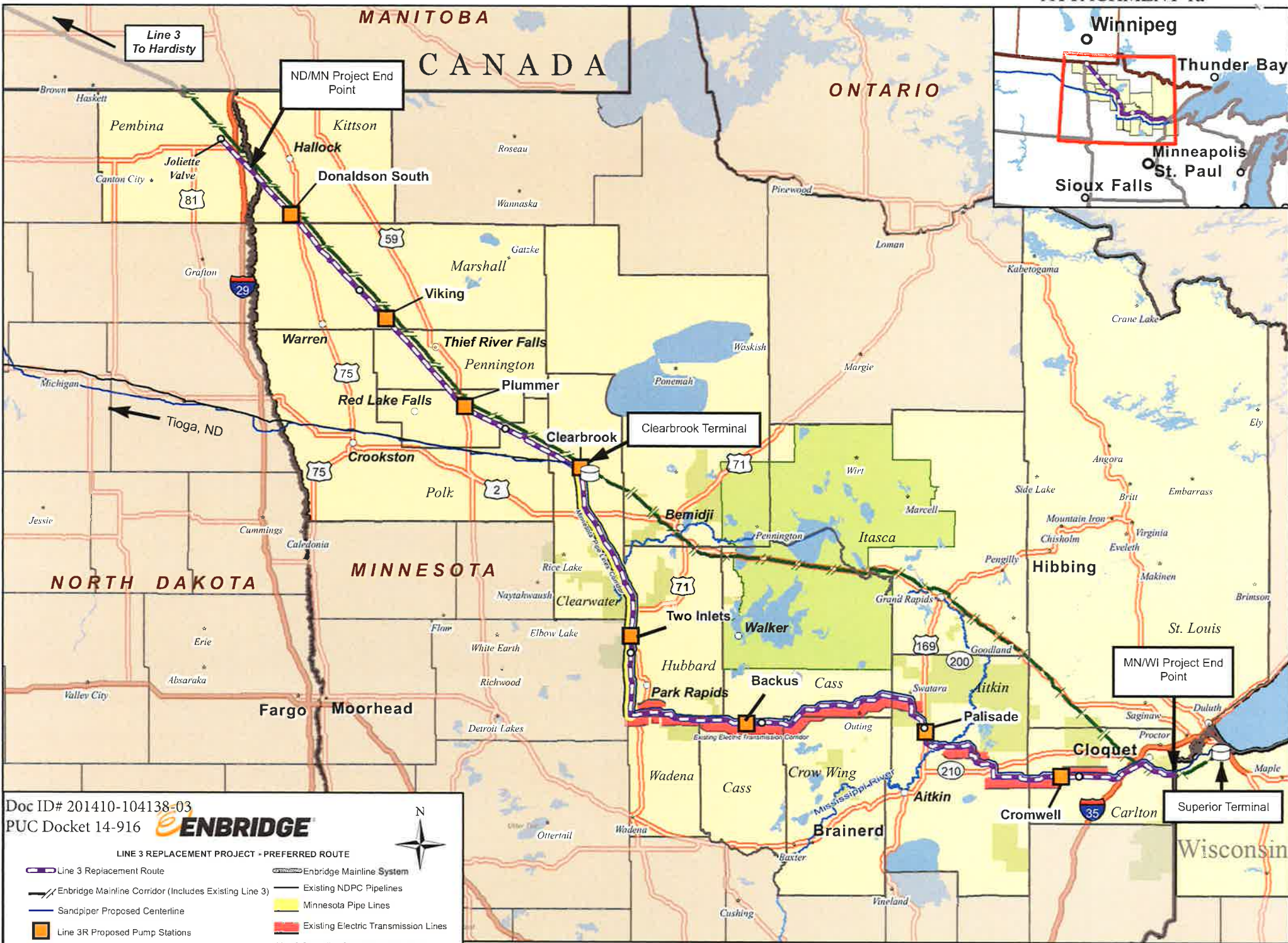
Jamie MacAlister at jamie.macalister@state.mn.us 651-539-1775 or 1-800-657-3794

Enbridge Energy, Limited Partnership Project Contact

Lorraine Little at Line3ReplacementProject@enbridge.com or 1-855-788-7812

This document can be made available in alternative formats (e.g., large print or audio) by calling 651-296-0406 (voice). Persons with hearing or speech disabilities may call us through their preferred Telecommunications Relay Service.

If any reasonable accommodation is needed to enable you to fully participate in these meetings (e.g., sign language, foreign language interpreter, large print materials), please contact the Commission at 651-296-0406 or 1-800-657-3782 at least one week in advance of the meeting



Doc ID# 201410-104138-03
PUC Docket 14-916

LINE 3 REPLACEMENT PROJECT - PREFERRED ROUTE

Additional detailed project maps can be found on the project website at www.enbridge.com/Line3ReplacementProgram or by calling the Line 3 Replacement Project team at 855-788-7812.



1912 Mamie & Poly Wiggins Skiing

AITKIN COUNTY HISTORICAL SOCIETY
20 Pacific Street S.W. / P.O. Box 215
Aitkin, MN 56431

We are located just 2 blocks south of the stoplights in downtown Aitkin, south of the railroad tracks and west of highway 169 on Pacific Street.

Phone: 218-927-3348

Email: achs3348@embarqmail.com

Web Site: www.aitkincohs.org

56431\$1269 C002



Aitkin County
Board of Commissioners
209 2nd Street N.W.
Aitkin, MN 56431

CALENDAR OF EVENTS 2015

Annual Cookie Walk/Open House

December 5th 2015

The museum opens at 9am and closes at 4pm. Admission is free on this day. Hot apple cider, coffee and cookies are served for our guest's enjoyment. Our Annual Cookie walk takes place during our Annual Open house. Doors open for this event at 9:30am and run until cookies are gone. Usually all cookies have been sold by noon.

Annual Raffle Drawing

December 5th 2015

Our Annual Raffle drawing takes place at 2pm. This year's drawing will include 108 prizes donated by local businesses and members. A list of raffle prizes is included in this newsletter.

Annual Dinner/Meeting

January 27th, 2016

Our Annual Meeting will take place at the 40-Club bar-n-grill. The cost this year will be \$15.00 per person.

MUSEUM HOURS

June thru August

Tuesday, Wednesday, Friday &
Saturday 10am to 4pm

September thru May

Wednesday, Friday & Saturday
10am to 4pm

THE PRESERVATION OF
OUR HERITAGE
DEPENDS ON YOU

Editor:

Gregory Leach
Administrator, Aitkin
County Historical Society

AITKIN COUNTY HISTORICAL SOCIETY MEMBERSHIP

Business Members – 34, Individual Members – 31, Senior Members – 131, Family Members – 273, Life Members – 16, Perpetuity Members – 2
TOTAL MEMBERSHIP – 487 (NEW GOAL IS 500)

BUSINESS MEMBERS

Aicota Health Care Center
Aitkin Auto Body
Aitkin Chamber of Commerce
Aitkin County Abstract Co.
Aitkin Family Chiropractic
Aitkin Flowers & Gifts
Aitkin Independent Age
Aitkin Iron Works
Aitkin Lodge #164 IOOF
Aitkin Motor Company
American Legion Post 86
Arvidson Tax & Accounting
Bremer Bank
D.Q. Grill & Chill
Eyecare Center of Aitkin & McGregor
Garrison Disposal
Gobles Sewer Service
Gravelle Plumbing & Heating
Hasskamp Brox. Well Drilling
Hudrlik Carpet & Tile
Jim Blakesley Enterprises
K & J C-Stores, Inc.
KKIN-KEZZ Radio
Lundberg Plumbing & Heating
Members Coop Credit Union
Mille Lacs Energy Cooperative
Neighborhood National Bank
Northern Air Plumbing & Heat
Paulbecks County Market
R & K Cabinets
Schwebel, Goetz, Sieben
Security State Bank
Sunset Bay Resort
The Tire Barn, Inc.
Woods & Shores Real Estate

**Please Support Our
Business Members!
They Support us.**

Supporting Townships

**Farm Island Township
Beaver Township
Lakeside Township
Libby Township
Pliny Township
Macville Township
Nordland Township
Idun Township**

**Supported by:
Aitkin County**

Memorials Received

During 2015 For:

Allan Westerlund
Judith Arnold
Donnie Hanson
Betty Stromdahl
Robert Borg
Calvin Davies
Harvey Fairchild
Irene Betley
Glen Olesen
Georgiana Wold
Lyndon Hasskamp
Clarence Hedlund
C.J. Meacham
Lynn Ackerman
Leona Wagner
Albin Pearson

**Buy a membership for
a family member,
neighbor or friend.
Help ACHS reach its
goal of 500 members.**

Board Members

Darlene Maciej – Pres.
Cheryl Meld – VP
Colleen Bremner – Sec.
Susan Benson
Carol Bailey
Ron Kemmett
John Hendrickson
Bob Lake
Lorraine Liljenquest
Joel Hyytinen
Allen Ladd Hakes
Russell Peterson
Mark Wedel – Co. Com.
Sherry Arvidson – Acct.
Greg Leach – Admin.

NEW MEMBERS

Robert Skogman
Judy Sutherland
Rick & Brenda Bandow
Donna Appel
Mardelle DeCamp
MyRene Magdsick
James Peterson

Members Lost

During 2015

John Young
8/5/1929 to 2/10/2015
Shirley Meyer
6/14/1927 to 1/11/2015

GEARING UP FOR 2016

1. The search for my replacement will start in the beginning part of 2016.
2. Some interesting changes were discussed for next year's garage sale.
3. New fundraisers will be discussed and possibly put into play.
4. Our new book "Country Schools of Aitkin County" will possibly be published.
5. The purchase of the land under our buildings might become a reality.
6. Our new "Historical Map of Aitkin County" will be distributed around the County to help tourism and share our counties rich history.
7. Younger volunteers must be nurtured and taught how the museum works.
8. Promotion of the museum must be continued.
9. More model trains must be located for our display. (donated or on loan) Twelve more needed to fill our display cases. Any size will be accepted.
10. Continue to research for future books on Resorts, Churches, and Riverboats.
11. Develop displays for the County fair about different areas of Aitkin County.
12. Replace current displays about Land-o-lakes and musical instruments with different displays.
13. Add more content to our web site.
14. Promote our research center located in the Depot building.

VOLUNTEERS NEEDED!!!!!!!!!!!!

Volunteers are needed to help with the following at the museum.

1. Staff the front desk to answer the phone and welcome guests to the museum.
2. Learn how to accession in photographs.
3. Learn how to accession in information and artifacts (Care and preservation)
4. Write thank you letters. (For items received as donations to the museum)
5. Write grants for things needed at the museum.
6. To develop new displays in the museum. (Interactive children's displays)
7. Create new displays for next year's County Fair. (Hill City, Logging, Riverboats, etc.)
8. Research old newspapers for information about Churches, Resorts and Riverboats.

As my time as your Administrator runs down I find myself evaluating my performance. Is the Historical Society a better place then how I found it? **I believe so.** How can I make it easier for the person that takes my job next to come in running? (**Administrator time table book**) Have I been able to accomplish everything I had hoped to? **No.** I had **hoped to get the land purchased under the Depot and find a Caboose to put on display.** Although I still have eight months to accomplish those things. The numbers of displays have been increased. Books have been published and others are being researched. A research room for visitors has been established, new microfilm reader added and many rolls of microfilm. Two of our fundraisers have more than doubled in the amount raised. All-in-all I believe that I will have left the society better off.

Vintage car club stopped by the museum on Sunday June 21st. Not normally open on Sundays, they called ahead and made arrangements to tour our facility. Everett and Shirley Davies came in and helped me with the tour. Coffee, Lemonade & cookies were served. Eight cars made the trip. (Stanley Steamer, Ford, 1906 REO, Maxwell, 1910 Buick, Cadillac and a Hudson) It was fun to see the Stanley Steamer.



The Aitkin Armory, a historic building of brick, is being turned into an assisted living facility and the entire building will be stucco on the outside. When that happens, the 90+ year old landmark of Aitkin will be gone. It might have been cheaper to tear down the building and build a new one. However, it was decided to save the building and rebuild the inside. With all the workmen at the sight we have taken a hit on the number of people visiting the museum this summer.

Garage Sale Numbers are In

The Annual Garage Sale is over and a new sales record was set. This year we had sales of \$10,918.00 which crushed last year's sales of \$9300.00. Our sales have gotten better every year since we broke \$4000.00 in 2009. Concern over the move of the parade time from 4pm to 11:30am turned out to be unfounded. There were around 40 people shopping during the parade. Our count of people attending once again surpassed 1800. DAV came on Monday after the sale and picked up some of the remaining merchandise.

THANK YOU! THANK YOU! THANK YOU!

I would like to thank everyone who donated items for our sale. I want to thank Mike Paulbeck for loaning us six grocery carts to help with the sorting process. I want to thank Aitkin County Growth for providing us with some space to put collected merchandise before the sale. A big thank you goes out to Sentence to Serve (STS) for helping to haul our tables and merchandise from storage to the fairgrounds and helping to clean up after the sale. And a **great big thank you** goes out to all the volunteers that spent 100's of hours collecting, hauling, sorting, marking working and cleaning up after our sale. Without all of the hard work of our volunteers this event would not be possible.

SECOND QUARTER ACCESSION LIST

4/1/2015	15.21	Cuyuna Heritage Network	Aitkin Soo Line Depot Post Cards, 100th Anniversary Bethlehem Lutheran Church
4/4/2015	15.22	Kit Julum	Jean Hodgedon Kelve Photos & Articles, 20 - Aitkin Hi-Lites, Bell Tower & Bell from Chute School
4/10/2015	15.23	Cherie Holm	
4/10/2015	15.24	Unknown	Hair Pins & Combs
4/22/2015	15.25	Jan Ziske	bag - Ziske Wild Rice
4/22/2015	15.26	Janet Miller	Hakes Creamery Jar & photos
4/22/2015	15.27	Bev Mensing	School Record Books
4/29/2015	15.28	Monica Westerlund	Book - My Life - Donald Carlson - Remembering When
4/29/2015	15.29	Connie Messer	Book - Jacques
4/29/2015	15.30.	Pam Landgren	1st National Bank Plaque, Land O Lakes Turkey bag
5/1/2015	15.31	Nordland Township	Minute Book - 1996-2006
5/1/2015	15.32	Sally Bowser	Sewing Machine
5/1/2015	15.33	Val Toivonin	School teacher contracts
5/1/2015	15.34	Gerald Hedberg	IOOF Information
5/6/2015	15.35	Jean Pitt	Old 4H & County Homemaker info.
5/6/2015	15.36	Barb Lundquist	Aitkin F.D. photos, helmets, alarm signals & Truck
5/6/2015	15.37	Bernis Geving	Justice of the Peace Ledgers from McGregor 1960's political Scrapbook, Hills Drive in Visor, Sears Café
5/6/2015	15.38	Noel Bailey	Matchbooks, Misc. postcards, postage stamps, adv. Items
5/13/2015	15.39	Bryan McGinnis	Photo - school - Lakeview by McGregor
5/13/2015	15.40.	J.T. Kullhem	Photo - school - Lakeview by McGregor
5/15/2015	15.41	JoAnn Getsinger	1920's Wedding Dress Political Card - 1914 Boekenoogen - Candidate for Sheriff
5/16/2015	15.42	Chris Johnson	
5/16/2015	15.43	Peggy Connally Itasca Co. Historical Society	1832 Spinning Wheel from Norway
5/20/2015	15.44		Photo - Early Waldeck, Aitkin Co. Travel Map
5/20/2015	15.45	Robert Kolodji	Photo - 1920 Log Home in Verdon Township
5/20/2015	15.46	Marge Anderson	Photo - 1901 Football, Record - Aitkin H.S. Choir 196?
5/20/2015	15.47	Karin Butler	District #94 School Census report
6/9/2015	15.48	Merle Peterson	Projector
6/9/2015	15.49	Brian Napstad	framed Mississippi Headwater record
6/9/2015	15.50.	Unknown	Photo - Veteransville school
6/9/2015	15.51	Barbara Monnier	School photos, 1871-1971 Aitkin Book
6/9/2015	15.52	Connie Messer	Sugar sack, booklet - "Practical Helps"
6/9/2015	15.53	Jan Moriarty	Misc. Military Souvenirs, Yearbook & Napkins
6/13/2015	15.54	La Vonne Blount	photo - flood
6/19/2015	15.55	Sue Doering	2 - Quilts
6/19/2015	15.56	Diann Hendrickson	Misc. Paper Items
6/19/2015	15.57	Cathi Webster	Misc. books for our library

Items Donated

Folgers Coffee

Everett Davies
Kay Olson
John Hendrickson
Lorraine Liljenquest
John Hendrickson

Candy / water

Greg Leach
Ron Fitch
Marcia Thurmer

Lime-a-way & Windex

Anne Marcotte

Four Display cases

Jessica's Treasure Chest

Reams of Copy Paper

Laura Thornbloom
Anne Marcotte

"Carry out a random act of kindness, with no expectation of reward, safe in the knowledge that one day someone might do the same for you."

Diana Princess of Wales

BUGS! - - - - - I hate 'em!

Sand flies, Deer flies, 'skeeters, ticks
It doesn't matter, take your pick;
They bite me, they sting me, they drive me insane,
I slap 'em, I spray 'em, I cuss all in vain,
I smear bites with ointments, liquids and paste,
I search for remedies flat on my face,
I'm a whimpering, cowering, miserable wreck,
Unnerved and scratching from toe to neck,
I can't relax, forget 'em and shrug,
I hate to admit that I'm licked by a bug!!!!!!!!!!!!

By Dorothy Harley

"The following donations have been received during the second quarter of 2015"

Donations \$300.00 & up

Aitkin Lions Club

Donations \$100.00 & up

Carol Munson
Alice Fageroos
Shirley Davies

Donations \$50.00 & up

Lual Leistikio

Donations \$20.00 & up

Paul & Luanne Beyreuther
Aitkin Women of Today
Class of 1950
Sherry Arvidson

Numerous office supplies were pulled out of the items that were donated for our garage sale such as: copy paper, folders, note cards, tablets, paper clips, staples, pens, and envelopes. The value that these items has saved the museum over \$100.00.

County Commissioner Lunch

On June 9th we held our Annual lunch for the County Commissioners and Administrator. The purpose of this lunch is to share with the commissioners what changes have occurred at the museum during the past year and let them see the new displays. We also try to share with them our plans for the coming year.

The lunch included a Tater-Tot hot dish, three salads, rolls, and two dessert bars. A variety of sodas, coffee and water were available.

Everyone seemed to be happy with the changes to the museum and everything we are doing. They seemed to enjoy the lunch which was provided by our board members.

Door Prize Winners at County Fair

1. Two rounds of golf at Cross Woods golf course –
Matt Hurd
2. \$20.00 gift certificate to the Office Shop-
Raylene Davis
3. "Barns of Aitkin County" Book –
Kylie Cooper
4. Two Free Sandwiches from McDonalds –
Marlys Morris
5. Shiperio – The game of golf card game –
Pat Johnson
6. 12 – pack of Pepsi – **Roger Johnson**

Old Age Is' Hell

Author Unknown

The body gets stiff; you get cramps in your

Legs:

Corns on your feet as big as hens' eggs:

Gas on the stomach, elimination is poor:

Take Ex-Lax at night, but then you're not sure:

You soak in the tub or the body will smell...

It's just like I said. "OLD AGE IS HELL."

The teeth start decaying. Eyesight is poor:

Hair falling out, all over the floor:

Sex life is shot – it's a thing of the past...

Don't kid yourself, friends, even that doesn't last.

Can't go to parties, don't dance anymore;

Just putting it mildly, you're a hell of a bore.

Liquor is out, can't take the chance.

The bladder is weak, might pee in your pants.

Nothing to plan for, nothing to expect;

Just the mailman bringing your security check.

Now be sure your affairs are in order, your will made right.

Or on the way to the grave, there'll be a hell of a fight.

So if by this year, you feel fairly well. Thank



The photo above was one of the displays featured at the Aitkin County Fair. Eleven displays showcased different areas and subjects pertaining to Aitkin County. The display featured photos and information about the Aitkin Fire Department. Other fair displays shown below.



56. Barns of Aitkin County donated by ACHS – (\$19.95 value)
57. **Coombs Cuts** Gift Certificate – (\$18.00 value)
58. Tire Rotation donated by the **Tire Barn** (\$18.00 value)
59. Mag Rain Gauge donated by Midwest Machine – (\$17.99 value)
60. 2 Rounds of mini-golf at Whistling Wolf in Crosslake – (\$16.00 value)
61. **40 Club** Gift Certificate for \$15.00
62. Folding Chair donated by Greg Leach – (\$15.00 value)
63. Set of 4 Frosted Glasses donated by Members Coop Credit Union – (\$15.00 value)
64. \$15.00 off retail gift certificate from **Lorrie's Hair Studio**
65. **Farm Island Repair** – T-shirt – (\$15.00 value)
66. **Farm Island Store** – 14" two topping Pizza – (\$13.99)
67. **Farm Island Store** – 14" two topping Pizza – (\$13.99)
68. **Bar-B-Q** set donated by Kay Olson – (\$10.00 value)
69. Mini Maglite donated by **Mille Lacs Energy Cooperative** (\$10.00 value)
70. Forestedge Rhubarb Blend Wine donated by Aitkin Municipal – (\$10.00 value)
71. \$10.00 Gift Certificate for **Auli Z's & the Bippity Bop Ice Cream Shop**
72. **Rasley Oil Company** Gift Certificate for \$10.00
73. **Bginagins Used Clothing Store** gift certificate for \$10.00
74. **Cedarbrook Lumber Company** gift certificate for \$10.00
75. \$10.00 Gift Certificate donated by **Bills Sportsman's Service**
76. \$10.00 Gift Certificate donated by **Gramma's Pantry**
77. \$10.00 Gift Certificate donated by the **Beanery**
78. Forestedge Rhubarb Blend Wine donated by **Aitkin Municipal** – (\$10.00 value)
79. \$10.00 Gift Certificate to **Rasley Oil Company**
80. \$10.00 Gift Certificate to **Bginagins Used Clothing Store**
81. Umbrella with light donated by Greg Leach – (\$8.00 value)
82. Umbrella from **Pine Insurance** – (\$8.00 value)
83. Bottle of VENDANGE White Zinfandel donated by **The Landing** – (\$8.00 value)
84. **McDonald's** Sandwich & Breakfast Sandwich – (\$7.50 value)
85. **Subway** 6-inch Fresh Value Meal - (\$7.50 value)
86. **Shiperio** – The Game of Golf donated by **Bruce Leach** – (\$7.50 value)
87. **McDonald's** Sandwich & Breakfast Sandwich – (\$7.50 value)
88. **Subway** 6-inch Fresh Value Meal – (\$7.50 value)
89. **Shiperio** – The Game of Golf donated by **Bruce Leach** – (\$7.50 value)
90. **McDonald's** Sandwich & Breakfast Sandwich – (\$7.50 value)
91. **Subway** 6-inch Fresh Value Meal – (\$7.50 value)
92. **Shiperio** – The Game of Golf donated by **Bruce Leach** – (\$7.50 value)
93. **McDonald's** Sandwich & Breakfast Sandwich – (\$7.50 value)
94. **Subway** 6-inch Fresh Value Meal – (\$7.50 value)
95. **Shiperio** – The Game of Golf donated by **Bruce Leach** – (\$7.50 value)
96. **McDonald's** Sandwich & Breakfast Sandwich – (\$7.50 value)
97. **State Farm Insurance** – Coffee Mug – (\$7.00 value)
98. **State Farm Insurance** – Coffee Mug – (\$7.00 value)
99. **Midwest Machine** baseball cap – (\$6.95 value)
100. Goodyear racing baseball cap – (\$6.95 value)
101. **Midwest Machine** baseball cap – (\$6.95 value)
102. Steak & Chop Marinade donated by **Kathy's Kitchen** – (\$6.95 value)
103. **Midwest Machine** baseball cap – (\$6.95 value)
104. Case of Pepsi donated by **EZ Stop** – (\$5.69 value)
105. Case of Mountain Dew donated by **EZ Stop** – (\$5.69 value)
106. 2015 Road Atlas from **State Farm Insurance** – (\$5.00 value)
107. \$5.00 Gift Certificate from **Aitkin Secondhand**
108. 2015 Road Atlas from **State Farm Insurance** – (\$5.00 value)

Raffle Drawing December 5th at 2pm

2015 RAFFLE PRIZE LIST

Drawing on December 5th at 2pm

1. Night Stay at Grand Casino Mille Lacs + \$25.00 Dinner Coupon – (\$125.00 value)
2. Framed picture donated by **Aitkin Furniture** – (\$76.00 value)
3. 250 Full Color Business Cards from **Tidholm Productions** – (\$69.95 value)
4. 2013 American Eagle coin donated by **Neighborhood National Bank** – (\$50.00 value)
5. \$50.00 Verizon Gift Certificate
6. \$50.00 **Shopko** Gift Card
7. \$50.00 Verizon Gift Certificate
8. Honeywell FocusPRO 5000 Thermostat from **Gravelle Plumbing** - (\$50.00 value)
9. \$50.00 Verizon Gift Certificate
10. \$50.00 Verizon Gift Certificate
11. Bird Feeder donated by **Hyytinen Hardware** – (\$39.99 value)
12. One Year Subscription donated by **Aitkin Independent Age** (\$39.00 value)
13. **Duane Photography** gift certificate – (\$39.00 value)
14. Oil Change from **Brandl Motors** – (\$35.50 value)
15. Oil Change from **Brandl Motors** – (\$35.50 value)
16. Grill Set from **Pine Insurance** – (\$35.00 value)
17. Oil Change from **Cuyuna Country Auto** – (\$35.00 value)
18. Fish Wind chime from **Aitkin Pet & Farm** – (\$35.00 value)
19. BRK Carbon Monoxide Alarm donated by **Northern Air** – (\$35.00 value)
20. First Aid Kit donated by **Riverwood Health Care** – (\$30.00 value)
21. First Alert Fire & Smoke Alarm donated by **Northern Air** – (\$30.00 value)
22. **Farm Island Repair** – Blue Collared T-shirt – (\$26.00 value)
23. **Farm Island Repair** – Blue Collared T-shirt – (\$26.00 value)
24. \$25.00 Gift Certificate to the **Rialto Theatre**
25. \$25.00 Gift Certificate from **Roadside Restaurant**
26. \$25.00 Gift Certificate from **The Office Shop**
27. 12-Golf balls donated by **Security State Insurance** – (\$25.00 value)
28. \$25.00 Gift Certificate from **Birchwood Café**
29. \$25.00 Gift Certificate to Paulbeck's donated by **Woods & Shores Real Estate**
30. \$25.00 Gift Certificate to **Sew Much & More**
31. Folding Chair donated by **Security State Bank** – (\$25.00 value)
32. **Freedom** Gift Certificate for \$25.00
33. **Hometown Building Supply** gift certificate for \$25.00
34. Necklace donated by **Jessica's Treasure Chest** – (\$25.00 value)
35. T-shirt & Gift Certificate donated by **Shirts Plus** – (\$24.95 value)
36. Dairy Queen Gift Certificate for one 8" D.Q. Cake – (\$20.99 value)
37. Family Membership to the **Aitkin County Historical Society** – (\$20.00 value)
38. \$20.00 Gift Certificate from **Aitkin Flowers**
39. \$20.00 Gift Certificate for **The Green House**
40. Family Membership to the **Aitkin County Historical Society** – (\$20.00 value)
41. \$20.00 Gift Certificate donated by **Paulbeck's**
42. **40 Club** Gift Certificate for \$20.00
43. Family Membership to the **Aitkin County Historical Society** - (\$20.00 value)
44. \$20.00 Gift Certificate to **Aitkin Lanes**
45. \$20.00 Gift Certificate donated by **Paulbeck's**
46. Family Membership to the **Aitkin County Historical Society** - (\$20.00 value)
47. **Farm Island Repair** – camo t-shirt – (\$20.00 value)
48. Baseball cap donated by **Aitkin Glass** – (\$20.00 value)
49. Family Membership to the **Aitkin County Historical Society** - (\$20.00 value)
50. Carpet cleaning supplies donated by **Hudrlik Carpet** – (\$20.00 value)
51. 3-in-1 John Deere Power Tools – (\$19.99 value)
52. Framed Swan picture donated by **Unclaimed Freight North** – (\$19.98 value)
53. Barns of Aitkin County donated by **ACHS** – (\$19.95 value)
54. The Money Hungry Hound donated by **Kathy's Kitchn** – (\$19.95 value)
55. Cardinal Wind Chime donated by **Crossroads In Time** – (\$19.95 value)

AITKIN COUNTY HISTORICAL SOCIETY
DEPOT HIGHLIGHTS NEWSLETTER
SUMMER 2015 – Volume 20, Issue 3

AUG 10 2015

The seventh summer as your Administrator is quickly disappearing and fall is looming on the horizon. The County Fair has come and gone. This year we utilized nine glass display cases to show case Aitkin County Fair history, Aitkin Fire Department, Warren William (movie actor from Aitkin), McGregor, Tamarack, Palisade, McGrath, Jacobson, and Iron Hub. On the walls we displayed Country schools of Aitkin County and Glory. All the displays were well received. Next year we hope to use those same display cases to show case Hill City, Aitkin and various other towns in Aitkin County such as: Bain, Swatara, Red Top, Ball Bluff, Arthyde, Kimberly and Shovel Lake. Or maybe displays about the River boats, Resorts or logging. These decisions I will leave for the new Administrator.

Work on our Annual Garage sale started on Tuesday July 14th with Sentence to serve helping to move all of our tables and some of the merchandise for our sale for 5 ½ hours. Volunteers started to unpack and sort. On Wednesday the volunteers spent the day moving the rest of the merchandise to the fairgrounds and continue to unpack and sort. Actually the volunteers spent the entire year collecting merchandise for our sale. By the end of Wednesday, July 22nd, almost everything was unpacked and sorted and the pricing had begun. Only 15,000 items to mark or at least it seems like that much stuff. This is our largest fund raiser of the year but, it also requires the most volunteer hours. When counting up the hours of collecting, storing, moving, unpacking, organizing and pricing the merchandise and add in the hours running the sale and cleaning up after the sale we will have spent around 1500 hours. But our sale is not just that, it has become an event. Last year over 1800 people attended and bought a lot of items for 25 cents and up. Our sale has items from the kitchen sink to beanie babies, furniture to books, Linens to tools and jewelry to baby items. You will not find clothes at our sale or TV's. You will find a huge selection of books, cassette tapes, and Jig saw puzzles. The amount of merchandise has grown so much that we now fill two of the large buildings at the fairgrounds. This year the riverboat parade was moved from 4pm on Saturday to 11:30am. How that will affect our sale on Saturday is yet to be determined.

This year we collected 108 prizes for our Annual Raffle drawing which will take place at 2pm on the first Saturday in December. Our hope is to sell 3000 tickets this year. We currently have around 2000 tickets sold and usually sell around 600 at our garage sale. After our garage sale we have four months to sell tickets until the drawing. Check out the list of prizes for this year's drawing found in this newsletter. All winners will be notified by December 9th and have 30 days to pick up their prize. If prize not picked up we will redraw and give the prize to someone else.

Research continues on the Country Schools of Aitkin County book. We are still looking for photographs and information on several of the schools. Do you have photos or information of one of Aitkin Counties Country schools? Please share those with us now. We want to make this a complete history of our country schools.

Greg Leach (Administrator)

STATEMENT OF BUSINESS TRANSACTED IN
OFFICE OF COUNTY RECORDER, AITKIN COUNTY
DURING July 2015
DEPOSIT OF CHECK OR CASH \$26786.30 TO AITKIN CO TREASURER

NATURE OF BUSINESS TRANSACTED	AMOUNT OF FEES RECEIVED
UCC	0
NOTARY	80
NOTARY SURCHARGE	9.2030 Expired 8/1/10
TORRENS	182
TORRENS ASSURANCE	*** 9.2031 21
COUNTY GENERAL FUND	6713.5
STATE GENERAL FUND	*** 9.2036 5008.5
RECORDER TECH FUND 10-940-196-0000-5529	4770
LAND RECORDS COMPLIANCE FUND (UNALLOC) 10-940-195-0000-5529	5247
STATE WELL CERT.	*** 9.2027 1190
COUNTY WELL CERT	210
AMENDED DEATH	0
BIRTH CERTIFICATES	348
CHILDREN'S SURCH.	*** 9.2024 123
BIRTH/DEATH SURCH. (164/516)	*** 9.2022 680
DEATH CERT.	405
2010 LEG. SURCH 144.226 SUBD 3 (b)	*** 410
COPIES & C/COPIES	1398.3
TOTAL	26786.3

**WORK DONE FOR VARIOUS COUNTY AGENCIES
FOR WHICH NO PAYMENT WAS RECEIVED**

RECORDING HONORABLE DISCHARGES	46
AITKIN COUNTY	920
AITKIN CO ROAD & BRIDGE	874
OTHERS	46
TOTAL	1886

AITKIN, MN July 31, 2015

*Michael T. Moriarty Co Recorder
by Ade C Hoese, Deputy*

Zip 511

YEAR TO DATE 3172

PREVIOUS YEAR \$25714.00

B Board



AUG 10 2015

City of Aitkin

109 First Avenue NW • Aitkin, MN 56431
218/927-2527 • Fax 218/927-1834
www.ci.aitkin.mn.us

Dear Township served by Aitkin Fire Department

This is the final year of the signed contract we have with your township for fire protection. I would like to get together with a representative of your township to discuss the next contract for service.

I propose a date of September 17th at 7 pm at the Aitkin Fire hall.

At this meeting we will review some sample contracts and get some agreement on what the townships and the fire department require.

Included is a SAMPLE contract supplied by the Minnesota Association of Townships, I think it covers most things required. This will be open for discussion.

Please RSVP to city hall if you are able to attend.

You can RSVP to the city hall at 218-927-2527

Brian Pisarek

Fire Chief

(w)218-429-3019 Or (H) 218-927-6158

Serving the following townships: Aitkin, Morrison, Spencer, Farm Island, Nordland, Glen, Hazelton, Wealthwood, Malmo, Kimberly, Ross Lake, Blind Lake, T136 - R25 and the City of Aitkin.

SAMPLE FIRE CONTRACT

Fire protection is the most commonly contracted for service between cities and towns. In most cases, these contracts have long and unique histories resulting in widely varying contract provisions. Many have long terms and are often renewed without giving much attention to their content beyond the provisions dealing with the cost of the service. The result can be contracts with outdated provisions that do not adequately protect the interests of either the city or town. In other cases, the parties are keenly aware of the contract provisions and disagree over its wording. To assist cities and towns in these types of situations, the Minnesota Association of Townships worked with the League of Minnesota Cities to develop this sample fire contract.

This sample has many goals: encouraging the use of written contracts; providing language that reflects current approaches to issues such as liability and indemnification; addressing issues that may have been overlooked in local contracts; offering language that attempts to protect the interests of both cities and towns; and ultimately providing a platform from which cities and towns can build their own contract to fit their particular circumstances and interests. Keep in mind this sample does not, and is not intended to, address all the unique circumstances that may exist in a particular situation.

Many of the recommendations contained in the "Guidelines for Minnesota Fire Protection Contracts" (rev. November 2001) written by the Fire/EMS/Safety Center were incorporated into this sample. However, the formula suggested in the document was simplified for this sample. For example, the sample uses the number of calls to a jurisdiction to reflect the level of department use instead of attempting to develop a method for determining the percentage of use of the fire department for each call as suggested in the Safety Center's document. While some calls certainly involve more fire department resources than others, it was felt the level of use is balanced out over the three year average used in the formula. Not only is this approach simpler, it reduces the on-going administrative burdens on the fire department to track the more detailed information needed to determine the percentage of use per call.

Public officials with questions regarding this sample are encouraged to contact their respective organizations and, as always, have the contract reviewed by your local attorney before adopting it.

SAMPLE FIRE CONTRACT

This contract is made and entered into this _____ day of _____, 2015 between the City of Aitkin, Aitkin County, Minnesota, 109 1st Ave NW], a public corporation ("City"), and _____ Township, _____ County, Minnesota, [address], a public corporation ("Town").

In consideration of the mutual promises and agreements hereinafter set forth the parties do hereby agree as follows:

1. **Fire Service.** Town agrees to purchase from City, and City agrees to provide Town, the following fire services:

(Check all those that apply)

- | | |
|--|---|
| <input type="checkbox"/> Structural Firefighting | <input type="checkbox"/> Emergency Medical Services |
| <input type="checkbox"/> External Structural Firefighting | <input type="checkbox"/> Fire Scenes |
| <input type="checkbox"/> Interior Structural Firefighting | <input type="checkbox"/> Rescue Scenes |
| <input type="checkbox"/> Grass/Forest Firefighting | <input type="checkbox"/> General Medicals |
| <input type="checkbox"/> General Firefighting | Level of Emergency Medical Response |
| <input type="checkbox"/> Vehicles & Equipment | <input type="checkbox"/> First Responder |
| <input type="checkbox"/> Carbon Monoxide Calls | <input type="checkbox"/> Emergency Medical Technician |
| <input type="checkbox"/> Other Non-Structural Firefighting | <input type="checkbox"/> Paramedic |
| <input type="checkbox"/> Rescue | <input type="checkbox"/> Fire Code Enforcement |
| <input type="checkbox"/> Vehicle & Equipment Extrication | <input type="checkbox"/> Hazardous Materials Response |
| <input type="checkbox"/> General Search & Rescue | Level of Hazardous Materials Response |
| <input type="checkbox"/> Confined Space Rescue | <input type="checkbox"/> First Responder, Awareness |
| <input type="checkbox"/> High Level Rescue | <input type="checkbox"/> First Responder, Operations |
| <input type="checkbox"/> Water Rescue | <input type="checkbox"/> HAZMAT Technician |
| <input type="checkbox"/> Diving/Recovery | <input type="checkbox"/> HAZMAT Specialist |
| | <input type="checkbox"/> Disaster Response |
| | <input type="checkbox"/> _____ |

The services indicated above are further explained, or limited, as follows:

- a. **Allocation of Resources.** The parties understand the fire department officer in charge of the particular scene shall exercise judgment to determine, in consideration of all the established policies, guidelines, procedures, and practices, how best to allocate the available resources of the fire department under the circumstances of a given situation. Failure to provide fire services because of poor weather conditions or other conditions beyond the control of City shall not be deemed a breach of this contract.
- b. **No Guarantee.** The parties understand and agree City will endeavor to provide the services indicated above to the best of its ability given the circumstances, but City makes no guarantees that the services it actually provides in a given situation will meet any particular criteria or standard.

2. **Payment.** Town agrees to pay City annually during the term of this contract the Payment Amount determined annually according to the following formula:

The following percentages relate specifically to Town in relation to the entire territory to which City provides fire services as the primary service provider (e.g., the entire City, Town's Service Territory, and all or any portions of other cities, towns, or unorganized territories included in the City's primary service area).

Number of fire service calls to Town averaged over last three years: _____ %

Market value of all taxable and non-taxable structures: _____ %

Population: _____ %

Total: _____ % ÷ 3 = _____ % of Town Cost Allocation

Total Fire Department Annual Operational Budget for the upcoming year: \$ _____

$$\begin{array}{ccccccc} \$ & \underline{\hspace{2cm}} & \times & \underline{\hspace{2cm}} & \% & = & \$ \underline{\hspace{2cm}} \\ \text{Operational Budget} & & & \text{Town Cost Allocation} & & & \text{Payment Amount} \end{array}$$

For the purposes of this formula, population shall be determined by the most current state demographer's estimate available at the time the Payment Amount is determined.

City shall provide Town a written claim for the Payment Amount by the following date, or for each partial payment of the Payment Amount according to the following schedule:

- a. **Annual Meeting of Parties.** Town and City shall hold at least one joint meeting annually during term of this contract at least 60 days before its anniversary date to calculate the Payment Amount for the upcoming year, discuss Town's satisfaction with the service provided during the year, and to discuss such other issues as either party deems relevant to this contract. The meeting shall be held separately from any regular Town or City meeting and shall be attended by at least a quorum of each party's governing body.
3. **Emergency Service Charge.** Town, in its sole discretion, may exercise its authority to impose and collect an emergency service charge on those receiving emergency services, including fire services, within Town. City shall have no right to, or interest in, any service fees collected by Town. If Town imposes an emergency service charge it shall provide City a list of the specific types of information it determines it needs collected in order to successfully impose and collect the charge. City shall make a good faith effort to collect the requested information for each service call to the Service Territory and promptly provide Town with the information it collected.
4. **Service Territory.** City shall provide fire services as indicated in this contract to the area in Town described below and/or as indicated on a map which is attached hereto and made part of this contract. The identified area shall constitute the Town's Service Territory for the purposes of this contract.
[Describe the Service Territory or attach map outlining the Service Territory]
5. **Term.** This contract shall commence on the effective date indicated above and shall expire ____ years from that date unless terminated earlier as provided herein.
6. **Ownership.** City owns the buildings and equipment associated with the Fire Department and the amounts paid by Town do not give rise to any ownership interest in, or responsibility toward, those items unless a specific ownership interest is indicated below: *[describe if Town currently has any interest in the buildings or equipment or will acquire some interest during the term of the contract]*
7. **City's Responsibilities.** In addition to any other obligations described herein, City shall:

- a. Authorize and direct the City fire department to provide the fire services described herein to Town's Service Territory;
- b. Develop a detailed annual operational budget for the fire department for each year during the term of this contract by the Anniversary Date and present it to Town along with sufficient information to explain the items included in the budget figures;
- c. Upon Town's request, provide Town access to financial and cost data related to the fire department for five years prior to the current service year;
- d. Disclose to Town any proposed action City or the fire department intends to take that can reasonably be expected to effect the Insurance Services Office Fire Protection Grade in the Service Territory or City's ability to provide the fire services indicated above; and
- e. Promptly disclose to Town any information City can reasonably anticipate will directly affect its ability to perform its obligations under this contract.

8. **Town's Responsibilities.** In addition to any other obligations described herein, Town shall:

- a. Promptly pay City the Payment Amount as indicated above for the year of service, or a prorated share of the Payment Amount for the length of service actually provided if the contract is terminated early;
- b. Present a budget and levy proposal to the town electors at each annual town meeting during the term of this contract seeking authority to levy funds as needed to pay the "Payment Amount"; and
- c. Promptly disclose to City any information Town can reasonably anticipate will directly affect its ability to perform its obligations under this contract.

It is understood and agreed Town shall have no responsibility whatsoever toward the fighters or other emergency personnel including any employment related issues such as training, supervision, performance reviews, discipline, compensation, benefits, insurance coverages, compliance with any employment related federal, state, and local laws and rules such as OSHA, ERISA, RLSA, FMLA, or any other employment related issues. It is further agreed Town has no responsibility, beyond paying the agreed upon Payment Amount, for acquiring, operating, maintaining, housing, or replacing equipment as needed to provide the fire services described herein.

9. **Insurance Requirements.** City shall maintain general liability insurance for its services and shall include Town as an additional insured for the term of this contract and any extensions thereof. City shall also maintain inland marine, automobile, and property insurance coverages. City shall provide Town proof of such insurance coverages and the additional insured endorsement naming the Town annually by the anniversary date of this contract.
10. **Indemnification.** City agrees to defend and indemnify Town against any claims brought or actions filed against Town or any officer, employee, or volunteer of Town for injury to, death of, or damage to the property of any third person or persons, arising from City's performance under this contract for services. Under no circumstances, however, shall City be required to pay on behalf of itself and Town, any amounts in excess of the limits on liability established in Minnesota Statutes Chapter 466 applicable to any one party. The limits of liability for Town and City may not be added together to determine the maximum amount of liability for City. The intent of this subdivision is to impose on City a limited duty to defend and indemnify Town for claims arising out of the performance of this contract subject to the limits of liability under Minnesota Statutes Chapter 466. The purpose of creating this duty to defend and indemnify is to simplify the defense of claims by eliminating conflicts between the parties and to permit liability claims against both parties from a single occurrence to be defended by a single attorney.
11. **No Waiver.** Nothing herein shall be construed to waive or limit any immunity from, or limitation on, liability available to either party, whether set forth in Minnesota Statutes Chapter 466 or otherwise.

12. **Modification.** This writing contains the entire agreement between the parties and no alterations, variations, modifications, or waivers of the provisions of this agreement are valid unless reduced to writing, signed by both City and Town, and attached hereto.
13. **Subcontracting & Assignment.** City shall not subcontract or assign any portion of this contract to another without prior written permission from Town. Services provided to Town pursuant to a mutual aid agreement City has, or may enter into, with another entity does not constitute a subcontract or assignment requiring prior approval of Town so long as City remains primarily responsible for providing fire services to Town's Service Territory.
14. **Termination.** This contract may be terminated at anytime during its term by mutual agreement of the parties. Either party may terminate this agreement by personally serving a 120 day written notice of termination on the other party. This agreement shall terminate 120 days from the date of personal service of the written termination notice unless the party serving the notice withdraws the notice in writing before it is effective. If Town fails to pay for the service according to the schedule established herein, City may terminate this agreement 60 days from the date of personal service of written termination notice. Notice to City shall be served on the City administrator, or City clerk if there is no City administrator, and notice to Town shall be served on the Town clerk.
15. **Service Contract.** This is a service contract. The parties do not intend to undertake or create, and nothing herein shall be construed as creating, a joint powers agreement, joint venture, or joint enterprise between the parties.
16. **Minnesota Law Governs.** This contract shall be governed by and construed in accordance with the internal laws of the State of Minnesota. All proceedings related to this contract shall be venued in the State of Minnesota.
17. **Severability.** The provisions of this contract shall be deemed severable. If any part of this contract is rendered void, invalid, or otherwise unenforceable, such rendering shall not affect the validity and enforceability of the remainder of this contract.

IN WITNESS WHEREOF, the parties have executed this contract effective on the date indicated above.

City

Town

_____ City

_____ Township

By its Mayor:

By its Chairperson:

Signature

Signature

Print Name

Print Name

Date

Date

Clerk

Clerk



CITY OF HILL CITY

AUG 06 2015

August 4, 2015

To: J Mark Wedel, Chairperson, Aitkin County Board\
Terry Herrick, Clerk, Hill Lake Township
Larry Baker, Mayor, City of Hill City
Robert Roseberg, Chairperson, Aitkin Soil and Water Conservation District
Andy Hubley, Division Director, Arrowhead Regional Development Comm.
George Minerich, Planner, Minnesota Department of Health

From: George Casper, Head of Maintenance/Public Works, City of Hill City

Re: Wellhead Protection Plan, Part 1, for the City of Hill City

Hill City is in the process of developing a wellhead protection plan for its drinking water supply wells. As required by the Minnesota Wellhead Protection Rule (part 4720.5330, subpart 6), the Minnesota Department of Health approved Part 1 of the wellhead protection plan for our system. This portion of the plan includes information pertaining to:

1. The delineation of the wellhead protection area,
2. The drinking water supply management area boundary, and
3. The well and drinking water supply management area vulnerability assessment.

Enclosed please find the items listed above. If you would like a complete copy of the Part 1 plan containing the technical information used to delineate the wellhead protection area, drinking water supply management area, and vulnerability of the wells and aquifer, please contact me at (218)244-0440 or (218)697-2601.

Consistent with the Wellhead Protection Rule (part 4720.5330, subpart 7), a Public Information Meeting has been scheduled on September 8, 2015 at 5:30 PM in the Community Room off from City Hall, 125 Lake Ave., Hill City, MN 55748 to discuss issues and concerns with this portion of the plan. We welcome your participation at this event.

If you have any questions concerning this matter, please contact me.

PO Box 160
Hill City, MN 55748

The City of Hill City is an equal opportunity lender, provider, and employer and does not discriminate on the basis of race, color, religion, sex, national origin, age, veteran status, disability, marital status or sexual orientation.

Phone: 218-697-2301
Fax: 218-697-2401
Email:



CITY OF HILL CITY



George Casper
Head Maintenance/Public Works
City of Hill City

Cc: Terry Neff, Aitkin Co. Planning & Zoning/Environmental Services
Steve Hughes, Manager, Aitkin Soil and Water Conservation District
Trudi Witkowski, Minnesota Department of Health

PO Box 160

The City of Hill City is an equal opportunity lender, provider, and employer and does not discriminate on the basis of race, color, religion, sex, national origin, age, veteran status, disability, marital status or sexual orientation.

Phone: 218-697-2301
Fax: 218-697-2401

Vulnerability Assessments

The Part I wellhead protection plan includes the vulnerability assessments for the Hill City wells and DWSMA. These vulnerability assessments are used to help define potential contamination sources within the DWSMA and select appropriate measures for reducing the risk they present to the public water supply.

Table 1 - Water Supply Well Information

Local Well ID	Unique Number	Use/ Status ¹	Casing Diameter (inches)	Casing Depth (feet)	Well Depth (feet)	Date Constructed/ Reconstructed	Aquifer ²	Well Vulnerability
Well 1B	241990	P	8	167	185	1981	QBAA	Vulnerable
Well 2	229052	E	10	88	106	1952	QBAA	Vulnerable
Well 3	603694	P	8	180	200	10/31/1997	QBAA	Vulnerable

Note: 1. Primary (P), Emergency (E)
2. Quaternary Buried Artesian Aquifer (QBAA)

Assessment of Well Vulnerability

The vulnerability assessments for each well used by Hill City are listed in Table 1 and are based upon the following conditions:

- 1) Well construction at Well 3 (603694) meets current State Well Code specifications (Minnesota Rules, part 4725); meaning that the well itself should not provide a pathway for contaminants to enter the aquifer used by the public water supplier. Well 1B (241990) does not conform to current standards because it is unknown whether the outermost annular space was grouted. If the well was not grouted, it has the potential for acting as a conduit for flow of surface water and contaminants into the buried aquifer but to date, no evidence of this has been identified.
- 2) The geologic conditions at the well sites include a cover of clay-rich geologic materials over the aquifer, however it is not sufficient to retard or prevent the vertical movement of contaminants.
- 3) The USGS collected water samples from Well 3 (603694) in September 2013 as part of the National Water-Quality Assessment Program Cycle 3: Principal Aquifer Survey's project. Preliminary age analysis of the well water confirms the moderate vulnerability of the wells.
- 4) Water samples were collected from the city's wells at various dates and were analyzed for tritium, nitrate, chloride and bromide (Table 2). Tritium has been detected in both wells, indicating post-1953 water and confirming their vulnerable status (Alexander and Alexander, 1989). In addition, the chloride/bromide values for both wells are elevated and within the range that has been identified for impacts from human or animal waste and/or potassium chloride fertilizer, although neither nitrate nor bacteria have been detected in the source water (Mullaney, et.al, 2009).

Table 2 - Isotope and Water Quality Results (Various)

Unique Number (Well Name)	Tritium (TU)	Nitrate (mg/L)	Chloride/Bromide ratio	Chloride (mg/L)	Bromide (mg/L)
241990 (Well 1B)	6.3 (3/17/11)	<0.05 (8/22/14)	652	29.9 (8/22/14)	0.0458 (8/22/14)
603694 (Well 3)	6.8 (8/22/14)	<0.05 8/22/14	612	23.7 (8/22/14)	0.0387 (8/22/14)

Assessment of Drinking Water Supply Management Area Vulnerability

The vulnerability of the DWSMA is moderate and is based upon the following information:

- 1) Water chemistry data from Wells 1B and 3 indicates that the aquifer contains water that has detectable levels of tritium and chloride and chloride/bromide ratios consistent with human impact. Also, the preliminary results of detailed age dating conducted by the USGS (referenced above) support recharge ages that are consistent with those established for moderate vulnerability (years to decades).
- 2) Review of the geologic logs contained in the CWI database indicates that the aquifer exhibits a medium geologic sensitivity throughout the DWSMA (Figure 7).

This combination of factors suggests that the clay-rich layer found between the city's aquifer and the surface is leaky, and allows for surface water infiltration to reach the buried sand aquifer over a time frame of years to decades (Geologic Sensitivity Project Workgroup, 1991).

Source: Wellhead protection Plan, Part I, Wellhead Protection Area Delineation, Drinking Water Supply Management Area Delineation, Well and Drinking Water Supply Management Area Vulnerability Assessments for City of Hill City, May 2015. Author: Trent Farnum, P.G., Hydrologist, MDH SWP.

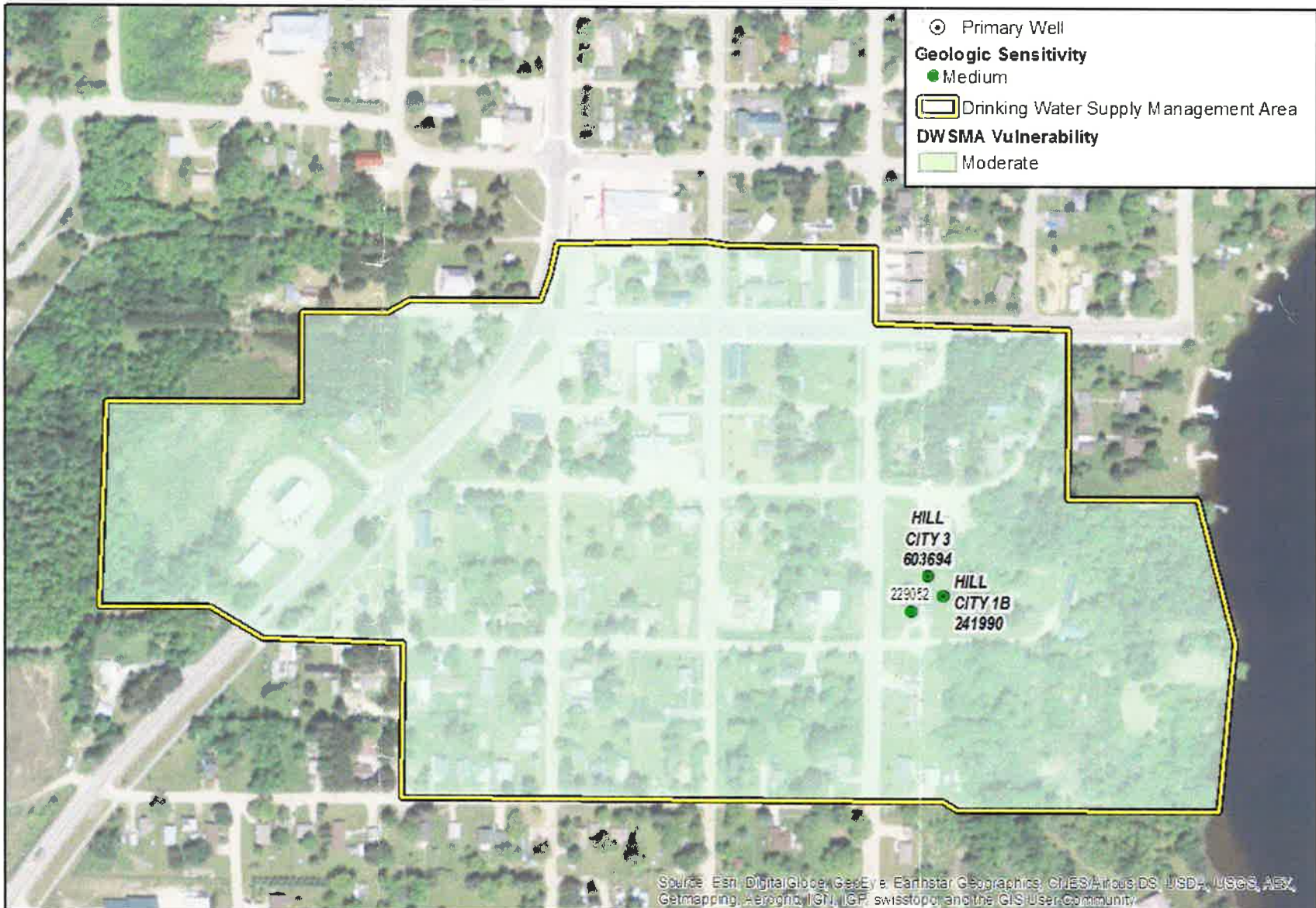


Figure 7
Drinking Water Supply Management Area Vulnerability
City of Hill City



Information Packet for the Next State Nonferrous Metallic Minerals Lease Sale including lands in Aitkin County, Minnesota

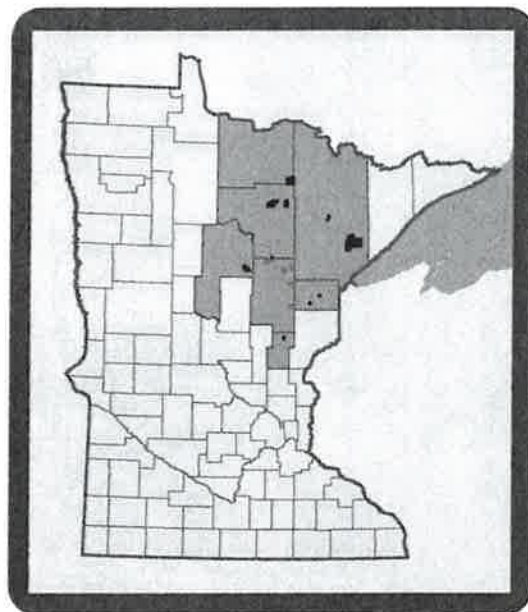
Overview

The Department of Natural Resources plans to hold a lease offering of state-owned metallic mineral leases for 199 mining units in northern Minnesota in fall 2015.

The DNR invites public input on the areas under consideration, which include sites in Aitkin, Carlton, Cass, Itasca, Kanabec, Koochiching and St. Louis counties, totaling approximately 102,044 acres.

- Aitkin: 22,163 acres / 38 mining units
- Carlton: 819 acres / 2 mining units
- Cass: 6,637 acres / 11 mining units
- Itasca: 12,435 acres / 26 mining units
- Kanabec: 800 acres / 2 mining units
- Koochiching: 11,630 acres / 33 mining units
- St. Louis: 47,560 acres / 87 mining units

The "Notice of Intent to Hold State Metallic Minerals Lease Sale" was published in the EQB Monitor and State Register Monday, June 22 and is available on the DNR's website at: http://www.dnr.state.mn.us/lands_minerals/leasesale/index.html



Areas under consideration for 2015 Metallic Minerals Lease Sale. Symbolized as orange for Aitkin County and black for other counties.

This will be the state's 34th metallic minerals lease sale and the first using a new process designed to increase transparency, provide better access to information and afford an opportunity for public input.

The website includes screening criteria used by the DNR in its review of potential areas for lease as well as an interactive web map showing the areas under consideration in relation to outdoor recreation areas and natural features. The public is invited to provide written input about the sites to the DNR. Information about how to submit input is posted on the website.

The lease sale involves nonferrous minerals, which are all metals except iron ore and taconite. Examples of nonferrous metallic minerals are: copper, nickel, platinum, palladium, gold, silver, cobalt, chromium, zinc, lead, bismuth, tin, tungsten, tantalum and niobium.

Under Minnesota law, the DNR is charged with managing state-owned minerals for exploration and development. Revenue generated from state metallic mineral leases benefits the schools, the university, and local taxing districts. On average, the DNR holds a metallic mineral lease sale about every one to two years.

Following the receipt of bids, the state's Executive Council will make final decisions about whether to approve new state metallic minerals leases.

A lease does not automatically grant the leaseholder permission to mine. Before a state-owned parcel can be mined, the leaseholder must comply with all legal requirements for environmental review and permitting. Most state metallic minerals leases end within five years. Historically, about 2 percent of areas under state metallic minerals leases have one or more exploratory borings.



Information Packet for the Next State Nonferrous Metallic Minerals Lease Sale including lands in Aitkin County, Minnesota

State Nonferrous Metallic Minerals Leasing by County

Highlighting Counties with lands being considered in next lease sale or with active leases.

As of July 1, 2015

County	Active Leases	Companies with Active Leases	Terminated Leases	Year Leasing Started - Ended	Areas Ever Offered - Parcels
Aitkin	67	Kennecott, HTX Minerals, & MMG	57	1985 - current	11,556
Carlton	18	Kennecott	63	1985 - current	3,339
Cass	-	-	-	-	674
Itasca	10	Vermillion Gold	449	1968 - current	17,499
Kanabec	-	-	24	2004 - 2012	2,139
Koochiching	2	Vermillion Gold	416	1968 - current	22,849
St. Louis	93	Agate Lake Resources, DMC (USA), Encampment Minerals, Franconia Minerals, Teck American, Vermillion Gold	1,291	1966 - current	30,971
Lake (not in areas considered)	58	DMC (USA), Encampment Minerals, Franconia Minerals, Twin Metals	225	1966 - current	10,516
*Other Counties	-	-	715	Varies	38,880
Total	248	10 companies	3,240	Since 1966	138,423

*Other Counties; that have had state nonferrous leases though don't have lands being considered in the 2015 lease sale or have active state nonferrous metallic minerals leases are; Beltrami, Cook, Crow Wing, Lake of the Woods, Marshall, Mille Lacs, Norman, Ottertail, Pine, Roseau, and Todd.

Mining Unit Data on Areas Under Consideration by County

Displays history of mining units being considered, as well as, data on general surface ownership

County	Mining Units	Mining Units Leased Before	Mining Units Offered Before	Total Acres	State Surface Acres	*Non-State Surface Acres
Aitkin	38	2	8	22,163	20,649	1,514
Carlton	2	2	2	819	153	665
Cass	11	0	0	6,637	6,557	80
Itasca	26	19	25	12,435	11,348	1,087
Kanabec	2	2	2	800	0	800
Koochiching	33	13	33	11,630	10,438	1,192
St. Louis	87	50	87	47,560	47,082	478
	199	88 (44%)	157 (79%)	102,044	96,740	5,816

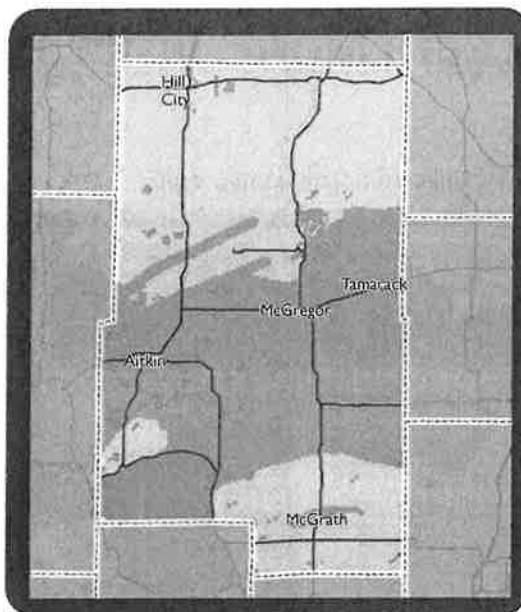
Notes: *Non-state surface ownership includes both private (5,183 acres), private commercial (591 acres), and county land (42 acres). 144 of the 199 mining units under consideration have complete state surface ownership.



Information Packet for the Next State Nonferrous Metallic Minerals Lease Sale including lands in Aitkin County, Minnesota

Metallic Mineral Potential

Aitkin County has significant metallic mineral potential as shown in map on the right. The detailed map on page 2 displays the locations of active and terminated state leasing as well as areas the state has offered for leasing.



General distribution of metallic mineral potential (orange)

Typical Mineral Exploration Activities

The mineral exploration process varies from site to site. Generally speaking the process goes from indirect methods such as survey of past literature (maps/data/archived drill core) and geophysical surveys to direct methods such as on-site field sampling, geophysics, and even exploratory boring. It should be noted that historically only 2% of state leased parcels have had 1 or more exploratory borings. For more information visit the DNR's webpage at:

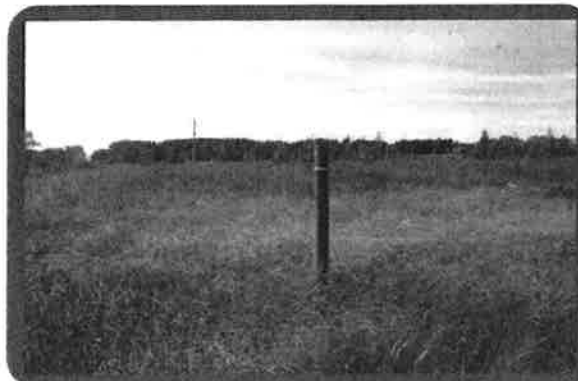
http://www.dnr.state.mn.us/lands_minerals/metallic_nf/explore.html



Geophysical survey - Helicopter



Exploratory boring site



Same exploratory boring site after 2 growing seasons

Handout Board Discussion

August 6, 2015

Governor Mark Dayton
Office of the Governor & Lt Governor
116 Veterans Service Building
20 W 12th Street
St. Paul, MN 55155

DRAFT
(not sent)

St. Paul, MN

Dear Governor Dayton:

I want to thank you for your attention and passion given to the Mille Lacs Lake situation. I spoke at the July 31st Roundtable Discussion in Isle, addressing the Mille Lacs Tourism Council position #3, helping those businesses in and around the lake that have suffered financial hardship due to the decline in visitors to the lake. I suggested that the State of Minnesota could help our area to continue to diversify our customer base by maintaining and increasing tourism funding for the "#do the lake" promotional campaign.

I would like to add another suggestion, as part of the puzzle, which could provide immediate financial relief to the businesses on Mille Lacs, be easy to administer and could be adjusted for the businesses that are further from the lake. I would propose that the State of Minnesota waive the State of Minnesota Business property tax on those businesses within 2 miles of the lake. For those businesses that are 2 – 5 miles, a 75% reduction in the tax and 6 – 10 miles from the lake 50% reduction in the tax. With this proposal a time limit could easily be added. Say 8 years, to give the businesses time to adjust to the new tourism dynamic around Mille Lacs and time for the biological solutions for the lake to take effect. This would effectively reduce the direct expenses and be of benefit to all businesses. Tax abatements have been discussed which would be effectively have the same results but would require administration expenses from the many Counties, Cities and Townships. Here is a couple of Aitkin County businesses annual State of MN property tax; Castaway's Resort, \$3,066.24 and the Malmo Market, \$1,000.54.

Thank you again for your time and efforts, I realize that there are no easy solutions for the Lake and our economy. Having gone through various flooding disasters, recently in 2012, I feel it is important to find solutions that are effective, easy to administer and easy to understand and use by those affected. I feel this would be one solution that would fit those criteria.

Sincerely,

Ross Wagner, Economic Development &
Forest Industry Coordinator

Cc Representative Dale Lueck
Senator Carrie Ruud

Aitkin County Board of Commissioners Board Meeting Attendance Record

Date: August 11, 2015

Name	Please check the boxes that apply.		
	Aitkin County Citizen	Aitkin County Employee	Company Representative – please list.
DAVID OSLIN			ML COUNTY BOARD
TERRY RHODES	✓		
Adam Hoogenabbe	✓		Aitkin Independent Age
BOB HARWARTH	✓		MY SELF
Erik Sambeck	✓		Aitkin Independent Age
Richard Baker			Millie Lacs County Community Development
Phil Thompson			Millie Lacs Co. Aud-Treas