

JAQUES ART CENTER
121 Second Street NW • Aitkin, MN 56431
www.jaquesart.com • info@jaquesart.com



Thank You

JUL 24 2015

*The Jaques Art
Center is grateful
for this grant.
We'll get the mural
repaired this summer.*

*Thank you,
Angie Barnhart*



Daniel P. Wolf
Daniel P. Wolf, Executive Secretary
Public Utilities Commission



**NOTICE OF APPLICATION ACCEPTANCE -
PUBLIC INFORMATION AND
ENVIRONMENTAL ANALYSIS SCOPING MEETINGS**

Issued: July 20, 2015

In the Matter of the Applications of Enbridge Energy, Limited Partnership for a Certificate of Need and a Pipeline Routing Permit for the Line 3 Pipeline Replacement Project in Minnesota from the North Dakota Border to the Wisconsin Border

Public Utilities Commission (PUC) Docket Numbers: PL-9/CN-14-916 – Certificate of Need
PL-9/PPL-15-137 – Route Permit

Project Description

Enbridge Energy, Limited Partnership (Enbridge) proposes to:

- Replace 282 miles of its existing 34-inch diameter Line 3 pipeline with 337 miles of 36-inch diameter pipeline
- Follow the existing Line 3 from the Minnesota-North Dakota border to Clearbrook
- Follow the same route proposed for the Sandpiper pipeline (PUC Docket Number 13-474) from Clearbrook to the Minnesota-Wisconsin border
- Permanently deactivate the existing Line 3 in-place after the replacement pipeline is in service
- Upgrade pump stations at Clearbrook, Donaldson, Plummer, and Viking
- Build new pump stations at Backus, Cromwell, Palisade, and Two Inlets

The proposed project is located in Aitkin, Carlton, Cass, Clearwater, Crow Wing, Hubbard, Kittson, Marshall, Pennington, Polk, Red Lake, and Wadena counties.

Enbridge states the project is needed to address safety and integrity issues associated with the existing Line 3 pipeline.

Meeting Information

- Each meeting starts on time.
- Arrive a few minutes early so you have time to sign in, pick up materials, and find a seat.
- State agency staff members run the meetings.
- Public Utilities Commission, Department of Commerce, and Enbridge staff will be available to answer questions about the permitting process and the project.
- You may add verbal comments, written comments, or both into the record.
- The Department of Commerce uses comments received at the meeting and during the comment period to develop the environmental analysis for this project.

DATE AND TIME	MEETING LOCATION
Tuesday, August 11, 2015 11:00am	<i>Hallock City Hall – Upstairs Auditorium</i> 163 3 rd Street SE, Hallock MN 56728
Tuesday, August 11, 2015 6:00pm	<i>Newfolden Community Center</i> 145 E 1 st Street, Newfolden MN 56738
Wednesday, August 12, 2015 6:00pm	<i>Ralph Engelstad Arena – Imperial Room</i> 525 Brooks Avenue, Thief River Falls MN 56701
Thursday, August 13, 2015 11:00am	<i>Plummer Senior Citizen Center</i> 185 Minnesota Street S, Plummer MN 56748
Thursday August 13, 2015 6:00pm	<i>Gully Community Center</i> 120 S Main St, Gully MN 56646
Monday, August 17, 2015 6:00pm	<i>Clear Waters Life Center – Gymnasium</i> 256 2 nd Avenue SW, Clearbrook MN 56634
Tuesday, August 18, 2015 6:00pm	<i>Rice Lake Community Center– Gymnasium</i> 13830 Community Loop, Bagley MN 56621
Wednesday, August 19, 2015 11:00am	<i>Park Rapids Century School – Cafetorium</i> 501 Helten Avenue, Park Rapids MN 56470
Wednesday, August 19, 2015 6:00pm	<i>Park Rapids Century School – Cafetorium</i> 501 Helten Avenue, Park Rapids MN 56470
Monday, August 24, 2015 6:00pm	<i>Pine River-Backus High School – Commons</i> 810 1 st Street N, Pine River MN 56474
Tuesday, August 25, 2015 11:00am	<i>McGregor High School – Gymnasium</i> 148 S 2 nd St, McGregor MN 55760
Tuesday, August 25, 2015 6:00pm	<i>McGregor High School – Gymnasium</i> 148 S 2 nd St, McGregor MN 55760
Wednesday, August 26, 2015 11:00am	<i>Carlton County Transportation Department</i> 1630 County Road 61, Carlton MN 55718
Wednesday, August 26, 2015 6:00pm	<i>Carlton County Transportation Department</i> 1630 County Road 61, Carlton MN 55718

- **Bad weather?** Find out if a meeting is canceled. Call (toll-free) 1-855-731-6208 or 651-201-2213 or visit mn.gov/puc

11:00am Meeting Agenda		6:00pm Meeting Agenda	
11:00-11:30	Formal presentations – • Public Utilities Commission • Enbridge • Department of Commerce	6:00-6:30	Formal presentations – • Public Utilities Commission • Enbridge • Department of Commerce
11:30-12:30	Citizen Comments	6:30-7:30	Citizen Comments
12:30-12:45	Break	7:30-7:45	Break
12:45-2:00	Citizen Comments	7:45-9:00	Citizen Comments
2:00	Meeting Adjourns	9:00	Meeting Adjourns

**Submit Comments,
Alternative Routes, Route Segments, Project Alternatives**

Topics Open for Public Comment:

- Please focus your comments on information that will help answer the following questions.
- In your comments, please state which question(s) you are addressing.
 1. What human and environmental impacts should be studied in the environmental analysis?
 2. Are there any specific methods to address these impacts that should be studied in the environmental analysis?
 3. Are there any alternative routes or route segments that should be considered? (Related to the *Route Permit*)

If proposing an alternative route or route segment, consider the following:

- Does the alternative address an unavoidable impact?
 - Does the alternative offer significant environmental or socioeconomic benefits compared to the proposed project?
 - Is the alternative feasible and prudent?
 - Does the alternative meet the described need and purpose for the project?
4. Are there any alternatives to the project that should be considered? (Related to the *Certificate of Need*)

If proposing an alternative to the project, consider the following:

- Project size – can a smaller or larger sized project better meet the decision criteria?
- Project type – can a different method (for example, existing pipeline, rail, or truck) meet the need?
- Project timing – is the project needed now or in the future?
- Is the alternative feasible and prudent?
- Does the alternative meet the described need and purpose for the project?

Comment Period Comments accepted through September 30, 2015

Please include the PUC Docket Numbers (*above*) in all communications.

Online mn.gov/commerce/energyfacilities/#comment

Email jamie.macalister@state.mn.us

U.S. Mail Jamie MacAlister, Environmental Review Manager
Minnesota Department of Commerce
85 7th Place East, Suite 500
St. Paul MN 55101

Fax 651-539-0109

Important Comments will be made available to the public via the Public Utilities Commission's and the Department of Commerce's websites, except in limited circumstances consistent with the Minnesota Government Data Practices Act. Personally identifying information is not edited or deleted from submissions.

Process Information

Before the project can be built, the Public Utilities Commission (Commission) must approve both a certificate of need and a pipeline route permit.

The certificate of need process determines the size, type and timing of the proposed pipeline and whether there is a better alternative for meeting Enbridge's stated need.

The pipeline route permit process designates the route for the pipeline and associated facilities and conditions for right-of-way preparation, construction, clean-up, and restoration. This process studies alternative routes and route segments for the pipeline.

At its July 1, 2015 meeting, the Commission determined Enbridge's certificate of need and pipeline route permit applications are complete. This means the company submitted all the information required to begin the review process. The Commission's decision-making process takes about twelve to fifteen months.

Department of Commerce Energy Environmental Review and Analysis staff prepares an environmental analysis for the certificate of need and a comparative environmental analysis for the route permit.

After the environmental review in each proceeding is completed, an Administrative Law Judge (ALJ) holds public hearings. You may speak at the hearings, ask questions, and submit written comments about the project.

After the public hearings, the Commission reviews all the information in the record, including written comments and comments received at the public hearings. The Commission's final decisions on the Line 3 certificate of need and route permit are expected by October 2016.

Eminent Domain: If issued a route permit by the Commission, Enbridge may use the power of eminent domain to take land for this project.

Any new easement or right-of-way agreements reached between Enbridge and landowners before a pipeline route permit is issued will not be considered in the Commission's final decision.

How to Learn More

Department of Commerce Project Website:

<http://mn.gov/commerce/energyfacilities/Docket.html?Id=34079>

Project Mailing List: Sign up to receive notices about project milestones and opportunities to participate (meetings, comment periods, etc.).

Contact docketing.puc@state.mn.us or 651-201-2204 with the docket number (14-916 for Certificate of Need; 15-137 for Route Permit), your name, mailing address, and email address.

Full Case Record: All documents filed in these docket are available via the Commission's website at mn.gov/puc, select *Search eDockets*, enter the year (14) and the docket number (916) for Certificate of Need or the year (15) and the docket number (137) for Route Permit, select *Search*.

Subscribe to the Docket: Subscribe to receive email notifications when new documents are filed. Note - subscribing may result in a large number of emails.

1. mn.gov/puc
2. Select green box *Subscribe to a Docket*
3. Type your e-mail address
4. For *Type of Subscription*, select *Docket Number*
5. For *Docket Number*, select 14 in the first box, type 916 in the next box - Certificate of Need
6. For *Docket Number*, select 15 in the first box, type 137 in the next box - Route Permit
7. Select *Add to List*
8. Select *Save*

Community Locations: The certificate of need and route permit applications will be available at the following locations in communities crossed by the proposed pipeline:

- City Clerk
- County Auditor
- Township Clerk
- Public Library
 - Aitkin Public Library, 110 1st Avenue NE, Aitkin
 - Bagley Public Library, 79 Spencer Avenue SW, Bagley
 - Bemidji Public Library, 509 American Avenue NW, Bemidji
 - Bovey Public Library, 402 2nd Street, Bovey
 - Brainerd Public Library, 416 S 5th Street, Brainerd
 - Carlton Public Library, 213 Chestnut Avenue, Carlton
 - Cass Lake Community Library, 223 Cedar Avenue, Cass Lake
 - Cloquet Public Library, 320 14th Street, Cloquet
 - Coleraine Public Library, 203 Cole Street, Coleraine
 - Duluth Public Library, 520 W Superior Street, Duluth
 - Godel Memorial Library, 314 E Johnson Avenue, Warren
 - Gonvick Lake Agassiz Regional Library, 170 Main Street, Gonvick
 - Grand Rapids Public Library, 140 NE 2nd Street, Grand Rapids
 - Hallock Public Library, 101 1st Street E, Hallock
 - Kitchigami Regional Library, Wadena City Library, 304 1st Street SW, Wadena
 - Marble Public Library, 302 Alice Avenue, Marble
 - McGregor Public Library, 111 E Center Avenue, McGregor
 - Mount Royal Branch Library, 105 Mt Royal Shopping Circle, Duluth
 - Northwest Regional Library, 210 LaBree Avenue, Thief river Falls
 - Outing Volunteer Library, 6300 Woods Bay Drive NE, Outing

- Park Rapids Area Library, 210 W 1st Street, Park Rapids
- Pine River Public Library, 212 W Barclay Avenue, Pine River
- Red Lake Falls Public Library, 105 Champagne Avenue SW, Red Lake Falls
- Thief River Falls Public Library, 101 E 1st Street, Thief River Falls
- Walker Public Library, 207 4th Street, Walker
- West Duluth Branch library, 5830 Grand Avenue, Duluth

Available on CD: You may contact Enbridge Energy Limited Partnership to request the certificate of need and route permit applications on CD (see below).

Enbridge Energy Limited Partnership Project Information

www.enbridge.com/Line3ReplacementProgram or 1-855-788-7812

Minnesota Statutes and Rules: The certificate of need application is reviewed under Minnesota Statute 216B and Minnesota Rules Chapter 7853. The pipeline route permit application is reviewed under Minnesota Statute 216G and Minnesota Rules Chapter 7852.

Minnesota Statutes and Rules are available at www.revisor.mn.gov.

Project Contacts

Public Utilities Commission Public Advisor

Tracy Smetana at consumer.puc@state.mn.us, 651-296-0406 or 1-800-657-3782

Public Utilities Commission Energy Facilities Planner

Scott Ek at scott.ek@state.mn.us or 651-201-2255

Department of Commerce Environmental Review Manager

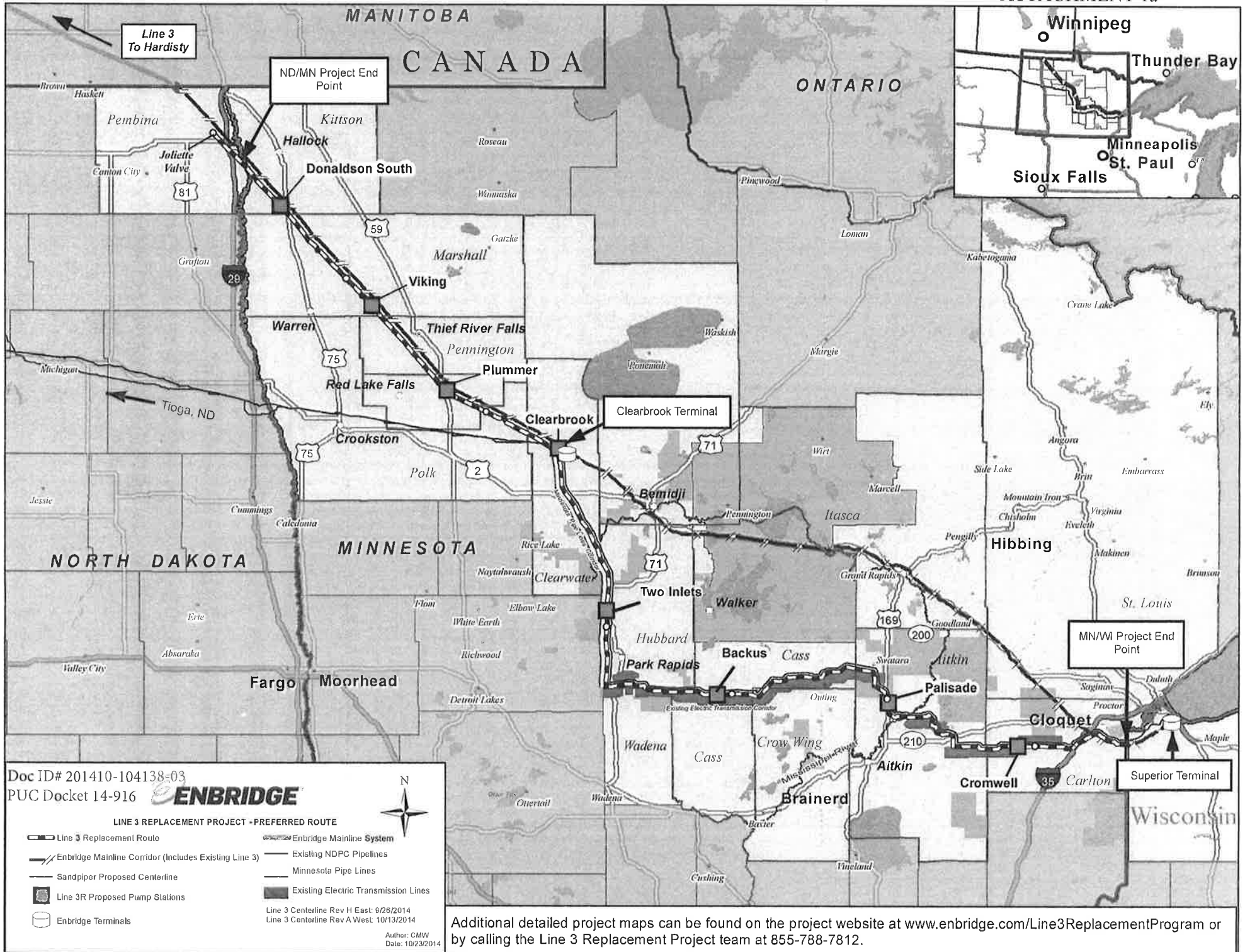
Jamie MacAlister at jamie.macalister@state.mn.us 651-539-1775 or 1-800-657-3794

Enbridge Energy, Limited Partnership Project Contact

Lorraine Little at Line3ReplacementProject@enbridge.com or 1-855-788-7812

This document can be made available in alternative formats (e.g., large print or audio) by calling 651-296-0406 (voice). Persons with hearing or speech disabilities may call us through their preferred Telecommunications Relay Service.

If any reasonable accommodation is needed to enable you to fully participate in these meetings (e.g., sign language, foreign language interpreter, large print materials), please contact the Commission at 651-296-0406 or 1-800-657-3782 at least one week in advance of the meeting



Doc ID# 201410-104138-03
 PUC Docket 14-916

ENBRIDGE

LINE 3 REPLACEMENT PROJECT - PREFERRED ROUTE

Line 3 Replacement Route	Enbridge Mainline System
Enbridge Mainline Corridor (Includes Existing Line 3)	Existing NDPC Pipelines
Sandpiper Proposed Centerline	Minnesota Pipe Lines
Line 3R Proposed Pump Stations	Existing Electric Transmission Lines
Enbridge Terminals	

Line 3 Centerline Rev H East: 9/26/2014
 Line 3 Centerline Rev A West: 10/13/2014
 Author: CMW
 Date: 10/23/2014

Additional detailed project maps can be found on the project website at www.enbridge.com/Line3ReplacementProgram or by calling the Line 3 Replacement Project team at 855-788-7812.

Aitkin County's Bat Man

Mark Jacobs would likely cringe if you compared him to Bat Man. The Aitkin County Land Commissioner, who oversees the present and future health of 220,000 acres of tax-forfeited land, does not bear resemblance to the fictional superhero who first appeared in American comic books in 1939.

But maybe, upon second thought, there might be some resemblance. Bat Man, who has also been called the "Crusader" and "The World's Greatest Detective," has committed himself to fighting crime. Unlike most superheroes, however, Bat Man does not possess any superpowers; he makes use of intellect, detective skills, science and technology, and an indomitable will in his continuous war to make things right.

Mark Jacobs is a bit of a Bat Man, The land commissioner and his staff ensure that the extensive woodlands in Aitkin County are healthy and growing in a manner that will provide timber and recreation activities like hiking, snowmobiling, ski trails, ATV, campgrounds, and geo-caching for citizens of future generations. They do it, not through any superpowers, but rather through the application of their professional training and science and technology, topped off by their passionate desire to 'make things right' in the state's woodlands.

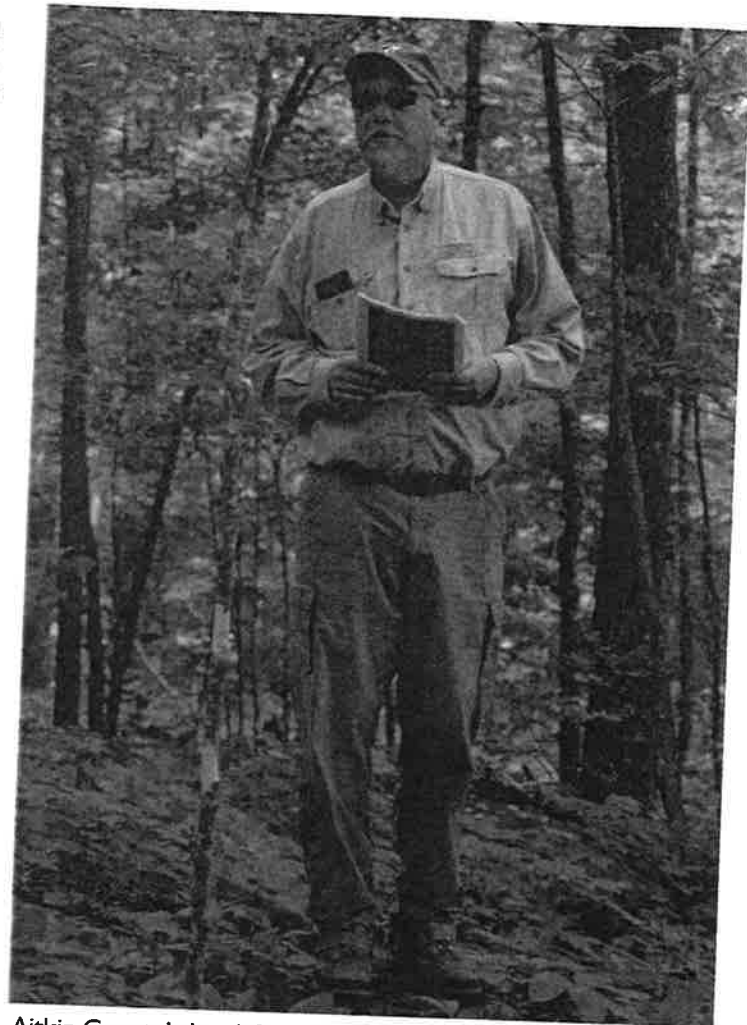
Aitkin County has 700,000 acres of timberland. That is more than five entire states have. The county is leading the way for clean air with its filtering system of trees. (And thankfully so: it has more miles of the Mississippi River than any other county in Minnesota - 103 miles.)

Perhaps this is where one can legitimately say the Superhero Jacobs makes his entrance. Mark has been relentless in his pursuit of educating both his colleagues, the public, and federal wildlife officials about the management of forests - and particularly as that management relates to one tiny little resident species in those county woodlands, among other places in the state: the northern long-eared bat.

The northern long-eared bat is a species of bats most impacted by a disease called 'white-nose syndrome.' Due to declines caused by white-nose syndrome as well as continued spread of the disease, the bat received protection by the US Fish and Wildlife Service (USFWS) as a threatened species under the Endangered Species Act. (ESA)

At the same time, the Service issued an interim special rule that eliminates unnecessary regulatory requirements for landowners, land managers, government agencies and others in the range of the northern long-eared bat. The final 4(d) rule will be finalized by the end of the calendar year.

White-nose syndrome was first discovered in the winter of 2006-2007, and has decimated many cave-hibernating bat populations in the Northeast. Since that time the disease or the fungus that causes it has spread to 28 of the 37 states. However, there are other activi-



Aitkin County's Land Commissioner: "Bat Man" Mark Jacobs.

ties considered secondary threats that may harm or kill northern long-eared bats. These activities include: cave/mine modifications, human disturbance in roosts and hibernation areas, forest habitat modification, and wind power development.

Now that the northern long-eared bat is listed under the ESA, incidental take of a bat while conducting any of these otherwise lawful activities would be prohibited without a permit or authorization. However, a 4(d) rule allows the Service to avoid regulating activities that may benefit the species or cause only limited amounts of take. This would then allow the Service and our partners to focus on actions that are most important to conserving northern long-eared bats.

Forestry colleagues from throughout Minnesota, including public and private agencies and private forest landowners, have united to share their knowledge and expertise on the management of Minnesota's forests with the USFWS, as well as with those who are concerned about the species and who may or may not un-

Bat Man Continued from page 18...



Public and private forestry colleagues, University of Minnesota staff, timber harvesters, and county and state forest management officials responded to an invitation from Aitkin County to spend a day in the field in early June to discuss Minnesota forest management as it relates to the long-eared bat.

derstand how Minnesota's forests are managed via "bat-friendly forestry," and other management applications.

Bat Friendly Forestry, promulgated by Mark and his staff is that 'it's not what you take . . . (from the



UPM Blandin Forester Beth Jacqumain discusses woodland management principles and terminology with Jill Ulstrup of the U.S. Fish and Wildlife Service's Twin Cities Field Office.

woods), it's what you leave behind. Things like cavity trees and snags. It means conducting forestry activities that provide diverse forest structure, canopy gaps for bat foraging, prudent harvesting during the bats' roosting season, and monitoring and documenting what is going on and what is being 'left behind.' In summary, it's forest management that is bat friendly.

In addition developing bat friendly forestry information, Mark continues to invite both forestry colleagues, timber harvesters, and the USFWS staff itself to Aitkin County's woodlands to assist them in better understanding the 'how'

and 'why' of forest management in Minnesota and alternatives to protecting bat habitat needs.

For more information, go to this Web site:

<http://www.fws.gov/midwest/Endangered/mammals/nbn/>

It's not a comic book, but it will tell you a lot about the issues for, and the reasons why Aitkin County's Bat Man is continuous in his commitment to making things right for Minnesota's forests and for the northern long-eared bat.

Giving Back to the Land Continued from page 16...

The Wisconsin NRCS is also emphasizing warbler habitat.

"But the EFI covers only Minnesota. There is almost \$800,000 of EFI set aside here just to do forestry and forest wildlife-related practices. We're hoping to target young forest habitat for the GWW if we find enough interested land-owners," Bomier said. The agency also hopes to benefit game species as well, such as woodcock because it is declining, but also white tailed deer, ruffed grouse and neotropicals such as black and white warblers and rose-breasted grosbeaks.

In the new Farm Bill, the U.S. Department of Agriculture (USDA), the NRCS's parent agency, consolidated its conservation easement programs under the Agricultural Conservation Easements Program (ACEP). ACEP makes available up to \$366 million to state and local governments, Indian tribes, non-governmental organizations such as RGS and private land-owners. The new **Regional Conservation Partnership Program (RCPP)** empowers USDA to seek partners to leverage a variety of financial resources for the protection of eight critical conservation areas, including areas that hold ruffed grouse and woodcock in the Chesapeake Bay Watershed, Mississippi River Basin and the Great Lakes Region.

To start a NRCS partnership on your land, go online to USDA to identify and call your nearest USDA/NRCS office. Have a conservationist come out to see the property, explain to him/her your goals and get a Conservation Activity or similar plan for which there is assistance.

"This is a great opportunity. The time has never been better for landowners to get professional resource advice and money to get wildlife habitat projects implemented to benefit a variety of species," Bomier said. "We don't want to let these programs sit on the shelf and collect dust, so please call us."

During an early May trip to my property to turkey hunt (in which I bagged a nice 22 pound gobbler), the grouse were drumming regularly and the woodcock only reluctantly abandoned their 'sky dancing' grounds as I passed on the many trails leading to and fro.

It was a good feeling knowing that I was giving back for all they have given me over the years.

July 20, 2015

Steve Shurts, Pres. & C.E.O.
East Central Energy
412 N. Main, P.O. Box 39
Braham, Minnesota 55006

JUL 24 2015

Dear Mr. Shurts,

My letter of 06-15-15 refers.

I thought you might be interested in some statistics concerning how much more dangerous rural roads are compared to other roads. These statistics appeared in an article in the 3-3-05 issue of the Indianapolis Star. In addition, it is noteworthy to compare the period this article addresses, 1990 to 2003, with the below tabulation from the National Highway Traffic Safety Administration (NHTSA) statistics of fatalities resulting from vehicles hitting utility poles in the United States over approximately the same period.

Year	No. of Fatalities	Year	No. of Fatalities
1991	1,454	1998	1,819
1992	1,848	1999	1,856
1993	1,898	2000	1,819
1994	1,779	2001	1,918
1995	1,911	2002	1,997
1996	1,943	2003	1,889
1997	1,849		

As you can see, except for 1991, fatalities from vehicles hitting utility poles held more or less steady over this period.



Ken Sharp
9342 Oak Run Circle
Indianapolis, Indiana 46260

cc: J. Mark Wedel, Aitkin County

Study: Death rate on rural roads is nearly triple other routes

By Tom Kenworthy

USA Today

The death rate for motorists on rural roads was nearly three times the rate for driving on all other roads in 2003, a study to be released today shows.

Safety improvements on rural, non-interstate routes have lagged, although driving on all U.S. roads and highways has become less dangerous since 1990, according to an analysis of federal highway data

by The Road Information Program.

"The nation's rural roads are exposing rural residents and visitors to an unacceptable level of risk," says William Wilkins, executive director of the highway information research organization, based in Washington, D.C. "We know how to make rural roads safer. What is missing is adequate funding for road safety projects that will save numerous lives."

Among the study's findings:

■ 52 percent of the 42,301 average annual traffic deaths from 1999 through 2003 occurred on noninterstate rural routes, although travel on those roads represents just 28 percent of miles driven.

In Indiana, 62 percent of its 4,441 traffic fatalities from 1999 to 2003 were on rural, non-interstate roads, the report said.

■ The death rate on rural roads in 2003 was 2.72 per 100 million miles driven, compared with 0.99 on all other roads.

■ From 1990 through 2003, the death rate on all routes excluding rural roads decreased 32 percent. The death rate on rural roads declined by 21 percent during the same period.

Many rural areas are gaining population, but roads in those areas are more likely than urban roads to have features that make driving hazardous. They include narrow lanes, limited shoulders and sharp curves.

Handout 3A

**Aitkin County
Contract Bid Abstract**

Contract No.: 20153
Project No.: SAP 001-599-037, SAP 001-599-038
Bid Opening: Monday, July 27, 2015 2:00 PM

Project: SAP 001-599-037 - Culvert Replacement - 350th Ave			Engineers Estimate		Gladen Construction, Inc.- Laporte, MN		Young Excavating, Inc.- Hackensack, MN		Roth Construction-McGrath, MN		Midwest Contracting, LLC- Marshall, MN		Landwehr Construction, Inc.-St. Cloud, MN		
Line No.	Item	Units	Quantity	Unit Price	Total Price	Unit Price	Total Price	Unit Price	Total Price	Unit Price	Total Price	Unit Price	Total Price	Unit Price	Total Price
13	2021.501 MOBILIZATION	LS	1	\$4,500.00	\$4,500.00	\$8,500.00	\$8,500.00	\$3,200.00	\$3,200.00	\$15,000.00	\$15,000.00	\$20,000.00	\$20,000.00	\$10,000.00	\$10,000.00
1	2051.501 MAINT & RESTORATION OF HAUL ROADS	LS	1	\$1,000.00	\$1,000.00	\$100.00	\$100.00	\$250.00	\$250.00	\$2,500.00	\$2,500.00	\$1.00	\$1.00	\$3,415.00	\$3,415.00
2	2101.511 CLEARING & GRUBBING	LS	1	\$1,500.00	\$1,500.00	\$1,500.00	\$1,500.00	\$2,500.00	\$2,500.00	\$500.00	\$500.00	\$1,000.00	\$1,000.00	\$3,500.00	\$3,500.00
3	2104.501 REMOVE PIPE CULVERTS	LF	80	\$15.00	\$1,200.00	\$25.00	\$2,000.00	\$12.00	\$960.00	\$10.00	\$800.00	\$25.00	\$2,000.00	\$76.00	\$6,080.00
4	2105.501 COMMON EXCAVATION (P)	CY	74	\$8.00	\$592.00	\$20.00	\$1,480.00	\$15.00	\$1,110.00	\$12.00	\$888.00	\$6.00	\$444.00	\$18.70	\$1,383.80
5	2105.521 GRANULAR BORROW (EV)	CY	3618	\$9.00	\$32,562.00	\$6.98	\$25,253.64	\$14.50	\$52,461.00	\$15.00	\$54,270.00	\$15.00	\$54,270.00	\$15.00	\$54,270.00
6	2105.604 GEOTEXTILE FABRIC TYPE V	SY	3111	\$2.00	\$6,222.00	\$2.10	\$6,533.10	\$2.50	\$7,777.50	\$3.00	\$9,333.00	\$2.00	\$6,222.00	\$1.40	\$4,355.40
7	2118.502 AGGREGATE SURFACING (LV), CLASS 5	CY	359	\$20.00	\$7,180.00	\$16.10	\$5,779.90	\$17.00	\$6,103.00	\$20.00	\$7,180.00	\$22.00	\$7,898.00	\$30.00	\$10,770.00
14	2412.511 10X5 PRECAST CONCRETE BOX CULVERT	LF	34	\$700.00	\$23,800.00	\$769.00	\$26,146.00	\$825.00	\$28,050.00	\$850.00	\$28,900.00	\$1,200.00	\$40,800.00	\$2,046.00	\$69,564.00
15	2412.512 10X5 PRECAST CONCRETE BOX CULV END SECT	EACH	2	\$7,000.00	\$14,000.00	\$6,905.00	\$13,810.00	\$11,067.50	\$22,135.00	\$8,800.00	\$17,600.00	\$20,000.00	\$40,000.00	\$17,005.00	\$34,010.00
16	2451.501 STRUCTURE EXCAVATION CLASS U (P)	CY	284	\$8.00	\$2,272.00	\$8.00	\$2,272.00	\$15.00	\$4,260.00	\$12.00	\$3,408.00	\$25.00	\$7,100.00	\$40.00	\$11,360.00
17	2451.503 GRANULAR BACKFILL (LV)	CY	226	\$10.00	\$2,260.00	\$9.50	\$2,147.00	\$22.00	\$4,972.00	\$20.00	\$4,520.00	\$17.00	\$3,842.00	\$15.10	\$3,412.60
18	2451.509 AGGREGATE BEDDING (MOD) LV	CY	57	\$35.00	\$1,995.00	\$45.00	\$2,565.00	\$75.00	\$4,275.00	\$55.00	\$3,135.00	\$80.00	\$4,560.00	\$85.00	\$4,845.00
19	2511.501 RANDOM RIPRAP CLASS III	CY	35	\$70.00	\$2,450.00	\$60.00	\$2,100.00	\$69.00	\$2,415.00	\$125.00	\$4,375.00	\$85.00	\$2,975.00	\$90.00	\$3,150.00
20	2563.601 TRAFFIC CONTROL	LS	1	\$1,500.00	\$1,500.00	\$3,500.00	\$3,500.00	\$2,500.00	\$2,500.00	\$2,500.00	\$2,500.00	\$2,500.00	\$2,500.00	\$3,560.00	\$3,560.00
8	2564.531 SIGN PANELS TYPE C	SF	12	\$50.00	\$600.00	\$55.00	\$660.00	\$150.00	\$1,800.00	\$75.00	\$900.00	\$50.00	\$600.00	\$74.00	\$888.00
9	2573.502 SILT FENCE, TYPE HI	LF	1802	\$4.50	\$8,109.00	\$6.00	\$10,812.00	\$3.50	\$6,307.00	\$4.00	\$7,208.00	\$3.00	\$5,406.00	\$6.80	\$12,253.60
10	2573.505 FLOTATION SILT CURTAIN TYPE STILL WATER	LF	25	\$25.00	\$625.00	\$40.00	\$1,000.00	\$25.00	\$625.00	\$25.00	\$625.00	\$25.00	\$625.00	\$34.00	\$850.00
11	2574.525 COMMON TOPSOIL BORROW	CY	415	\$40.00	\$16,600.00	\$18.00	\$7,470.00	\$32.00	\$13,280.00	\$35.00	\$14,525.00	\$8.00	\$3,320.00	\$33.00	\$13,695.00
12	2575.555 TURF ESTABLISHMENT	LS	1	\$3,000.00	\$3,000.00	\$2,500.00	\$2,500.00	\$10,000.00	\$10,000.00	\$4,000.00	\$4,000.00	\$9,000.00	\$9,000.00	\$13,660.00	\$13,660.00
Totals for Project SAP 001-599-037					\$131,967.00		\$126,128.64		\$174,980.50		\$182,167.00		\$212,563.00		\$265,022.40
% of Estimate for Project SAP 001-599-037							-4.42%		32.59%		38.04%		61.07%		100.82%

Project: SAP 001-599-038 - Culvert Replacement - 430th Ln				Engineers Estimate		Gladen Construction, Inc.- Laporte, MN		Young Excavating, Inc.- Hackensack, MN		Roth Construction-McGrath, MN		Midwest Contracting, LLC- Marshall, MN		Landwehr Construction, Inc.-St. Cloud, MN	
Line No.	Item	Units	Quantity	Unit Price	Total Price	Unit Price	Total Price	Unit Price	Total Price	Unit Price	Total Price	Unit Price	Total Price	Unit Price	Total Price
11	2021.501 MOBILIZATION	LS	1	\$2,500.00	\$2,500.00	\$8,500.00	\$8,500.00	\$5,000.00	\$5,000.00	\$10,000.00	\$10,000.00	\$10,000.00	\$10,000.00	\$4,425.00	\$4,425.00
1	2051.501 MAINT & RESTORATION OF HAUL ROADS	LS	1	\$1,000.00	\$1,000.00	\$100.00	\$100.00	\$250.00	\$250.00	\$1,500.00	\$1,500.00	\$1.00	\$1.00	\$3,415.00	\$3,415.00
2	2101.511 CLEARING & GRUBBING	LS	1	\$1,500.00	\$1,500.00	\$1,200.00	\$1,200.00	\$1,700.00	\$1,700.00	\$500.00	\$500.00	\$1,000.00	\$1,000.00	\$2,800.00	\$2,800.00
3	2104.501 REMOVE PIPE CULVERTS	LF	41	\$10.00	\$410.00	\$72.00	\$2,952.00	\$15.00	\$615.00	\$10.00	\$410.00	\$50.00	\$2,050.00	\$137.00	\$5,617.00
4	2105.501 COMMON EXCAVATION (P)	CY	56	\$8.00	\$448.00	\$10.00	\$560.00	\$15.00	\$840.00	\$12.00	\$672.00	\$8.00	\$448.00	\$10.00	\$560.00
5	2105.604 GEOTEXTILE FABRIC TYPE V	SY	330	\$2.00	\$660.00	\$3.10	\$1,023.00	\$3.00	\$990.00	\$9.00	\$2,970.00	\$3.00	\$990.00	\$1.60	\$528.00
6	2118.502 AGGREGATE SURFACING (LV), CLASS 5	CY	51	\$20.00	\$1,020.00	\$25.00	\$1,275.00	\$25.00	\$1,275.00	\$35.00	\$1,785.00	\$25.00	\$1,275.00	\$34.00	\$1,734.00
12	2412.511 14X6 PRECAST CONCRETE BOX CULVERT	LF	32	\$950.00	\$30,400.00	\$916.00	\$29,312.00	\$998.00	\$31,936.00	\$1,000.00	\$32,000.00	\$1,200.00	\$38,400.00	\$1,130.00	\$36,160.00
13	2412.512 14X6 PRECAST CONCRETE BOX CULV END SECT	EACH	2	\$12,000.00	\$24,000.00	\$12,600.00	\$25,200.00	\$18,179.00	\$36,358.00	\$18,600.00	\$37,200.00	\$20,000.00	\$40,000.00	\$17,633.00	\$35,266.00
14	2451.501 STRUCTURE EXCAVATION CLASS U (P)	CY	430	\$8.00	\$3,440.00	\$6.00	\$2,580.00	\$15.00	\$6,450.00	\$12.00	\$5,160.00	\$10.00	\$4,300.00	\$26.00	\$11,180.00
15	2451.503 GRANULAR BACKFILL (LV)	CY	231	\$10.00	\$2,310.00	\$12.00	\$2,772.00	\$24.00	\$5,544.00	\$20.00	\$4,620.00	\$25.00	\$5,775.00	\$19.30	\$4,458.30
16	2451.509 AGGREGATE BEDDING (MOD) LV	CY	56	\$35.00	\$1,960.00	\$45.00	\$2,520.00	\$69.00	\$3,864.00	\$55.00	\$3,080.00	\$55.00	\$3,080.00	\$52.50	\$2,940.00
17	2511.501 RANDOM RIPRAP CLASS III	CY	48	\$70.00	\$3,360.00	\$65.00	\$3,120.00	\$65.00	\$3,120.00	\$125.00	\$6,000.00	\$72.00	\$3,456.00	\$80.00	\$3,840.00
18	2563.601 TRAFFIC CONTROL	LS	1	\$1,000.00	\$1,000.00	\$2,500.00	\$2,500.00	\$1,500.00	\$1,500.00	\$1,750.00	\$1,750.00	\$1,500.00	\$1,500.00	\$2,300.00	\$2,300.00
7	2573.502 SILT FENCE, TYPE HI	LF	430	\$4.50	\$1,935.00	\$6.00	\$2,580.00	\$3.50	\$1,505.00	\$4.00	\$1,720.00	\$3.00	\$1,290.00	\$6.80	\$2,924.00
8	2573.505 FLOTATION SILT CURTAIN TYPE STILL WATER	LF	40	\$25.00	\$1,000.00	\$40.00	\$1,600.00	\$25.00	\$1,000.00	\$15.00	\$600.00	\$25.00	\$1,000.00	\$34.00	\$1,360.00
9	2574.525 COMMON TOPSOIL BORROW	CY	50	\$40.00	\$2,000.00	\$18.00	\$900.00	\$35.00	\$1,750.00	\$55.00	\$2,750.00	\$4.00	\$200.00	\$38.07	\$1,903.50
10	2575.555 TURF ESTABLISHMENT	LS	1	\$1,500.00	\$1,500.00	\$2,500.00	\$2,500.00	\$2,000.00	\$2,000.00	\$2,500.00	\$2,500.00	\$2,000.00	\$2,000.00	\$3,200.00	\$3,200.00
Totals for Project SAP 001-599-038					\$80,443.00		\$91,194.00		\$105,697.00		\$115,217.00		\$116,765.00		\$124,610.80
% of Estimate for Project SAP 001-599-038							13.36%		31.39%		43.23%		45.15%		54.91%
Totals for Contract 20153					\$212,410.00		\$217,322.64		\$280,677.50		\$297,384.00		\$329,328.00		\$389,633.20
% of Estimate for Contract 20153							2.31%		32.14%		40.00%		55.04%		83.43%

I hereby certify that this is an exact reproduction of bids received.

Certified By: John Wells License No. 24340

Date: 7-28-15

WHEREAS, Contract No. 20153 is for construction of S.A.P. 001-599-037, box culvert bridge replacement on 350th Avenue in Spencer Township, and S.A.P. 001-599-038, box culvert bridge replacement on 430th Lane in Morrison Township, and

WHEREAS, sealed bids were opened for this project at 2:00 p.m. on Monday, July, 27, 2015 with a total of five bids received, and

WHEREAS, Gladen Construction, Inc. was the lowest responsible bidder in the amount of \$217,322.64.

NOW, THEREFORE, BE IT RESOLVED, that Gladen Construction, Inc. be awarded Contract No. 20153.

BE IT FURTHER RESOLVED, that the chairperson of the Aitkin County Board and the Aitkin County Auditor are hereby authorized and directed to enter into a contract on behalf of Aitkin County with said low bidder upon presentation of proper contract documents.

Handout
4A

UNIVERSITY OF MINNESOTA

Twin Cities Campus

Minnesota Geological Survey

2609 Territorial Road
Saint Paul, MN 55114

Office: 612-626-2969

Website: www.geo.umn.edu/mgs

Email: mgs@umn.edu

July 17, 2015

Mr. J. Mark Wedel
Chairman
Aitkin County Board of Commissioners
217 2nd St NW
Aitkin, MN 56431

Dear Chairman Wedel,

This letter describes our expectations for creating a geologic atlas of Aitkin County. Although this arrangement does not involve any transfer of funds between Aitkin County and the Minnesota Geological Survey (MGS), it will require both parties to expend resources and effort, and both must successfully complete certain tasks to attain the goals of the project.

I wish to be clear that all MGS participation is dependent on funding from the Legislative and Citizen's Commission on Minnesota Resources (LCCMR), or other State sources. If that funding is not provided, or is not sufficient, the project will not be completed. That funding is now in place and I don't anticipate any funding problems.

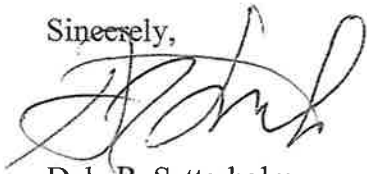
Your office, other offices of Aitkin County, or other local parties, will establish accurate locations for approximately 6,500 water wells for which construction records are available. Staff of the Minnesota Geological Survey will provide copies of those records, field maps, and training on procedures that will help you complete this task. The locations and the manner in which they are transferred to MGS must meet established standards, and MGS will conduct quality checks to assure the accuracy of the locations. Because many of the project tasks rely on the well information, this work must be completed early in the project.

The MGS will provide comprehensive geologic mapping and associated databases for Aitkin County. This will include maps of the bedrock geology, bedrock topography, surficial geology, thickness of the glacial materials, and also illustrations or other means to describe the glacial materials between the land surface and the bedrock surface. The completeness and resolution of these maps and databases are dependent on the distribution of data, mostly from the water well records. MGS will deliver these products as printed plates, as portable document files (pdfs), and as geographic information system files.

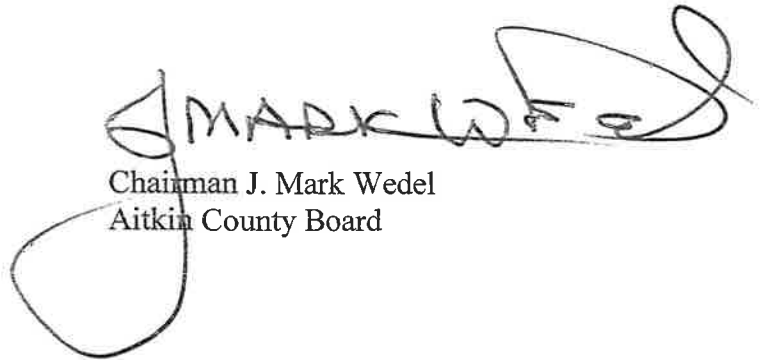
The County Geologic Atlas Program has been continuously funded for over 30 years, and we have no reason to expect a disruption. However, the date of delivery of products is funding dependent. We are generally able to deliver our products in 3 or 4 years. It is also expected that the Department of Natural Resources, Division of Waters, will follow completion of the MGS mapping and create maps and associated databases that describe the distribution, composition, and level of waters contained within the geologic systems of Aitkin County. This is another long-standing aspect of the program, but MGS obviously cannot guarantee participation of another party.

I believe that this project will provide information essential to managing the water and mineral resources of Aitkin County, to the benefit of its citizens. I appreciate your willingness to share this work with us. Please indicate your agreement with the expectations above by signature, and return one copy to me. Upon receipt I will appoint a project manager and they will contact Terry Neff regarding training and other preparations for the well location work. Thank you for your support of this project.

Sincerely,



Dale R. Setterholm
Geologist, Assistant to the Director



Chairman J. Mark Wedel
Aitkin County Board

Handout 6A

FundDept	2015 Bud		2015 Act		2015 Act - Bud		% of Budget		Administrator's Comments	
	Rev	Exp	Rev	Exp	Rev +/-	Exp +/-	Rev	Exp	Revenue	Expenditure
General Fund										
Administration/General Gov't Depts										
1 1 Commissioners	0	246,894	0	132,926	0	(113,968)		54%		
1 40 Auditor	(278,730)	601,807	(126,017)	336,536	152,713	(265,271)	45%	56%	Identified yellow Q1. Resolved through Q2	
1 41 Internal Audit	0	65,000	0	17,250	0	(47,750)		27%		
									Misc receipts generally on track with historical averages. No concern at this time.	
1 42 Treasurer	(32,500)	249,943	(12,348)	135,069	20,153	(114,874)	38%	54%		
1 43 Assessor	(166,997)	830,499	(164,991)	459,099	2,006	(371,400)	99%	55%		
1 44 Central Services	(7,493,247)	310,979	(4,384,803)	115,211	3,108,444	(195,768)	59%	37%	Property Tax receipts on target with historical Board approved 3k over budget capital expenditure. All other on track.	
1 45 Motor Pool	(30,000)	53,261	0	52,774	30,000	(487)	0%	99%		
1 49 Information Technologies	(800)	601,428	(622)	330,358	178	(271,070)	78%	55%		
1 52 Administration/HR	0	398,957	0	223,149	0	(175,808)		56%		
1 60 Elections	0	20,600	0	29,778	0	9,178		145%		Election machine service contracts paid. No concern at this time.
1 100 Recorder	(239,231)	248,030	(112,082)	142,008	127,149	(106,022)	47%	57%	Identified yellow Q1. Resolved through Q2.	
1 110 Courthouse Maint	(20,000)	366,051	0	200,050	20,000	(166,001)	0%	55%		Payments for services higher than normal. Will monitor.
1 111 Buildings	0	72,000	0	10,390	0	(61,610)		14%		
1 120 VSO	(22,200)	93,490	(2,973)	55,630	19,227	(37,860)	13%	60%	Vets van reimbursements lagging somewhat. Will monitor.	
1 121 HRA	0	1,600	0	1,330	0	(270)		83%		
Administration/General Gov't Depts Subtotal	(8,283,705)	4,160,539	(4,803,836)	2,241,557	3,479,869	(1,918,982)	58%	54%		

FundDept	2015 Bud		2015 Act		2015 Act - Bud		% of Budget		Administrator's Comments	
	Rev	Exp	Rev	Exp	Rev +/-	Exp +/-	Rev	Exp	Revenue	Expenditure
Public Safety										
1 12 Court Administration	(100)	85,100	(907)	65,695	(807)	(19,405)		77%	Attorney expenses tracking ahead of expectations. Most likely over budget up to 40k. Will monitor	
1 90 Attorney	(56,147)	931,141	(25,792)	500,694	30,355	(430,447)	46%	54%		
1 123 Coroner	0	58,000	0	26,454	0	(31,546)		46%		
1 200 Enforcement	(176,750)	2,099,117	(66,341)	1,147,656	110,409	(951,461)	38%	55%	Police state aid not yet received. No concern at this time.	
1 201 Sheriff Contingency	0	0	(613)	0	(613)	0				
1 202 Boat and Water	(19,000)	83,346	(5,236)	29,176	13,764	(54,170)	28%	35%		
1 203 Snowmobile	(6,175)	33,033	(38)	27,031	6,137	(6,002)	1%	82%		
1 204 ATV	(14,212)	20,537	0	5,050	14,212	(15,487)	0%	25%		
1 206 Forfeitures	0	0	(478)	35,225	(478)	35,225				
1 252 Corrections	(2,290,405)	2,358,067	(329,545)	1,401,159	1,960,860	(956,908)	14%	59%		
1 253 Aitkin Co Community Corrections	(33,443)	298,401	(19,997)	168,882	13,446	(129,519)	60%	57%		
1 254 Enhanced 911	(89,150)	331,700	(44,595)	94,945	44,555	(236,755)	50%	29%		
1 255 Crime Victim	(43,607)	67,502	(23,319)	35,470	20,288	(32,032)	53%	53%		
1 257 Sobriety Court	0	7,000	(4,543)	5,352	(4,543)	(1,648)		76%		
1 280 Emergency Management	(22,000)	47,223	(31,573)	20,568	(9,573)	(26,655)	144%	44%		
<i>Public Safety Subtotal</i>	<i>(2,750,989)</i>	<i>6,420,167</i>	<i>(552,977)</i>	<i>3,563,359</i>	<i>2,198,012</i>	<i>(2,856,808)</i>	<i>20%</i>	<i>56%</i>		
Culture and Recreation										
1 500 Library & Historical Society	0	289,552	0	280,770	0	(8,782)		97%	Appropriation paid. No concern at this time.	
1 520 Parks	0	0	0	0	0	0				
1 601 Extension	0	55,281	0	39,082	0	(16,199)		71%		
<i>Culture and Recreation Subtotal</i>	<i>0</i>	<i>344,833</i>	<i>0</i>	<i>319,852</i>	<i>0</i>	<i>(24,981)</i>		<i>93%</i>		

FundDept	2015 Bud		2015 Act		2015 Act - Bud		% of Budget		Administrator's Comments
	Rev	Exp	Rev	Exp	Rev +/-	Exp +/-	Rev	Exp	
Conservation of Natural Resources					0	0			
1 122 Planning and Zoning	(285,006)	419,434	(105,175)	229,913	179,831	(189,521)	37%	55%	Permit receipts actually ahead, grant funds not yet received. No concern at this time.
1 390 Environmental Health	(72,000)	76,724	(69,423)	38,163	2,577	(38,561)	96%	50%	
1 391 Solid Waste	(264,778)	273,988	(136,529)	145,871	128,249	(128,117)	52%	53%	
1 392 Water Wells	(6,150)	6,150	(5,053)	2,007	1,097	(4,143)	82%	33%	
1 600 Ag Soc, Soil & Water, Ag	0	136,169	0	123,991	0	(12,178)		91%	
1 603 Wetland Value Repl Fund	0	0	0	0	0	0			Appropriation paid. No concern at this time.
Conservation of Natural Resources Subtotal	(627,934)	912,465	(316,181)	539,946	311,753	(372,519)	50%	59%	
Economic Development					0	0			
1 700 Promotion, Tran, Airport,	0	41,807	0	17,634	0	(24,173)		42%	Grants disbursed. No concern.
1 711 Economic Development	(1,000)	38,817	0	27,391	1,000	(11,426)	0%	71%	
Economic Development Subtotal	(1,000)	80,624	0	45,025	1,000	(35,599)	0%	56%	
General Fund	(11,663,628)	11,918,628	(5,672,994)	6,709,739	5,990,634	(5,208,889)	49%	56%	
Road and Bridge Fund					0	0			
3 0	(4,183,722)	0	(1,571,695)	0	2,612,027	0	38%		
3 301 Administration/HR	0	470,550	0	270,435	0	(200,115)		57%	
3 302 Engineering/Construction	0	501,571	0	230,421	0	(271,150)		46%	
3 303 Highway Maintenance	0	3,313,940	0	1,799,979	0	(1,513,961)		54%	
3 307 Capital Infrastructure	(5,061,600)	8,954,800	(2,321,246)	754,766	2,740,354	(8,200,034)	46%	8%	
3 308 Equipment and Facilities	(497,300)	497,300	(497,300)	68,528	0	(428,772)	100%	14%	
3 310 232 Turnback	0	0	0	800,000	0	800,000			
Road and Bridge Fund	(9,742,622)	13,738,161	(4,390,241)	3,924,130	5,352,381	(9,814,031)	45%	29%	

FundDept	2015 Bud		2015 Act		2015 Act - Bud		% of Budget		Administrator's Comments	
	Rev	Exp	Rev	Exp	Rev +/-	Exp +/-	Rev	Exp	Revenue	Expenditure
Health and Human Services Fund					0	0				
5 0	0	0	(74,394)	74,394	(74,394)	74,394				
5 400 Public Health	(679,163)	714,805	(316,333)	419,958	362,830	(294,847)	47%	59%		
5 420 Income Maintenance	(1,595,020)	1,742,982	(853,563)	1,020,384	741,457	(722,598)	54%	59%		
5 430 Social Services	(3,497,368)	3,713,764	(1,573,887)	1,960,623	1,923,481	(1,753,141)	45%	53%		
Health and Human Services Fund	(5,771,551)	6,171,551	(2,818,176)	3,475,360	2,953,375	(2,696,191)	49%	56%		
					0	0				
10 921 County Development	(250,000)	313,110	(6,969)	140,229	243,031	(172,881)	3%	45%	Apportionments not yet received. No concern at this time.	
10 923 Forfeited Tax Sales	(1,455,000)	1,465,365	(731,212)	1,358,324	723,788	(107,041)	50%	93%	Expenses depend on revenues, no concern at this time.	
	(1,705,000)	1,778,475	(738,181)	1,498,553	966,820	(279,922)	43%	84%		
					0	0				
11 924 Forest Resource	(142,500)	200,457	(625)	121,544	141,875	(78,913)	0%	61%		
11 925 Reforestation	(207,838)	252,267	(278,586)	133,766	(70,748)	(118,501)	134%	53%		
11 934 Memorial Forest	(94,575)	134,282	(146,986)	55,887	(52,411)	(78,395)	155%	42%		
11 935 Forest Road	(37,000)	46,963	(20,635)	20,120	16,365	(26,843)	56%	43%		
	(481,913)	633,969	(446,832)	331,318	35,081	(302,651)	93%	52%		
					0	0				
19 521 LLCC Administration	(57,700)	237,163	(27,227)	144,171	30,473	(92,992)	47%	61%		
19 522 LLCC Education	(625,610)	221,962	(295,423)	121,688	330,187	(100,274)	47%	55%		
19 523 LLCC Food	(4,500)	161,525	(1,559)	93,129	2,941	(68,396)	35%	58%		
19 524 LLCC Maintenance	0	91,087	(60)	62,220	(60)	(28,867)		68%		
19 525 LLCC Capital Improvement	0	0	(15,734)	20,204	(15,734)	20,204				
	(687,810)	711,737	(340,002)	441,412	347,808	(270,325)	49%	62%		
					0	0				
21 520 Parks	0	0	(471,297)	497,307	(471,297)	497,307				

