

INCOME MAINTENANCE CASELOAD HISTORY

Year	Jan	Feb	Mar	Apr	May	June	July	Aug	Sep	Oct	Nov	Dec	
2014	MAXIS	1860	1840	1835	1828	1812	1801	1806	1798	1776	1782	1780	1812
	MNCare	136	133	133	128	125	121						
	Day Care	53	49	49	52	52	55	53	51	52	50	50	49
	Totals	2049	2022	2017	2008	1989	1977						
	Applications-MAXIS	56	40	47	56	41	47	55	41	41	45	41	55
2013	MAXIS	1831	1826	1847	1836	1852	1863	1836	1836	1827	1847	1839	1850
	MNCare	369	377	372	377	373	375	373	373	356	350	361	145
	Day Care	56	54	52	49	53	57	64	60	53	51	50	50
	Totals	2256	2257	2271	2262	2278	2295	2273	2269	2236	2248	2250	2045
	Applications-MAXIS	84	59	80	81	76	49	67	78	70	87	77	79
2012	MAXIS	1813	1819	1820	1832	1848	1848	1842	1828	1813	1805	1804	1817
	MNCare	341	346	368	345	309	332	351	352	346	363	367	369
	Day Care	72	70	73	72	72	62	63	65	64	67	61	58
	Totals	2226	2235	2261	2249	2229	2242	2256	2245	2223	2235	2232	2244
	Applications-MAXIS	91	62	77	71	94	77	63	85	69	86	60	86
2011	MAXIS	1727	1748	1784	1827	1848	1847	1837	1843	1802	1823	1822	1827
	MNCare	521	532	442	381	354	354	336	346	350	343	347	347
	Day Care	72	71	71	80	72	80	87	82	84	81	80	74
	Totals	2320	2351	2297	2288	2274	2281	2260	2271	2236	2247	2249	2248
	Applications-MAXIS	84	79	115	100	84	92	73	100	62	96	84	65
2010	MAXIS	1686	1675	1705	1694	1686	1668	1676	1664	1665	1671	1695	1703
	MNCare	408	417	419	442	439	439	451	477	490	502	522	513
	Day Care	77	74	68	67	67	67	67	63	62	62	67	72
	Totals	2171	2166	2192	2203	2192	2174	2194	2204	2217	2235	2284	2288
	Applications-MAXIS	76	52	75	90	68	64	73	82	68	88	85	73

MAXIS Cases: Number of unduplicated cases open for all programs except MNCare & Child Care can be open on multiple programs per case.

MNCare: Number of cases open on MNCare that Aitkin County manages. Residents do have the option of having their MNCare cases managed at the State Level.

Day Care: Number of day care cases open.

Total: Total cases open.

Applications – MAXIS: New applications taken during month for MAXIS programs only. Does not include MN Care or Day Care.

INCOME MAINTENANCE CASELOAD STATISTICS

2013 - 2014

	Jan	Feb	Mar	Apr	May	Jun	Jul	Aug	Sep	Oct	Nov	Dec	Avg
Total MAXIS Cases Open - Does not include MNCare & Day Care - 2014	1860	1840	1835	1828	1812	1801	1806	1798	1776	1782	1780	1812	1811
Total MAXIS Cases Open - Does not include MNCare & Day Care - 2013	1831	1826	1847	1836	1852	1863	1836	1836	1827	1847	1839	1850	1841
MinnesotaCare Cases - 2014	136	133	133	128	125	121							129
MinnesotaCare Cases - 2013	369	377	372	377	373	375	373	373	356	350	361	145	350
Day Care Cases - 2014	53	49	49	52	52	55	53	51	52	50	50	49	51
Day Care Cases - 2013	56	54	52	49	53	57	64	60	53	51	50	50	54
EA - Cases - 2014	7	5	3	5	4	3	3	6	4	4	3	1	4
EA - Cases - 2013	4	6	0	4	3	4	7	3	5	1	8	4	4
EA - Payments - 2014	5931	3776	1740	4093	3402	1809	2249	3542	1444	2405	963	970	2694
EA - Payments - 2013	1899	3636	0	3523	1601	2156	5652	2046	2962	374	4614	1380	2487
EGA - Cases - 2014	3	6	1	0	0	1	3	6	3	5	6	2	3
EGA - Cases - 2013	1	3	1	3	3	2	4	2	4	5	4	1	3
EGA - Payments - 2014	1402	2763	465	0	0	89	1199	2017	1105	1961	2330	750	1173
EGA - Payments - 2013	400	1048	400	1001	1149	708	1555	638	1528	2189	1470	370	1038
EMSA - Cases - 2014	0	0	0	0	0	0	0	0	0	0	0	0	0
EMSA - Cases - 2013	0	0	0	0	0	0	0	0	0	0	0	0	0
EMSA - Payments - 2014	0	0	0	0	0	0	0	0	0	0	0	0	0
EMSA - Payments - 2013	0	0	0	0	0	0	0	0	0	0	0	0	0
MA - Persons - 2014	2755	2729	2716	2703	2680	2666	2667	2665	2612				2688
MA - Persons - 2013	2796	2800	2803	2767	2798	2777	2747	2745	2744	2752	2734	2754	2768
MFIP - Cases - 2014	72	75	73	76	78	78	77	72	66	60	60	61	71
MFIP - Cases - 2013	79	76	76	76	76	75	78	75	71	77	73	70	68
GA - Cases - 2014	64	64	62	58	59	55	54	46	47	47	48	51	55
GA - Cases - 2013	52	58	62	59	55	58	61	59	56	59	56	55	58
MSA - Cases - 2014	92	90	88	90	88	88	90	91	89	88	87	88	89
MSA - Cases - 2013	88	86	86	88	87	90	88	88	88	91	91	92	89

INCOME MAINTENANCE CASELOAD STATISTICS

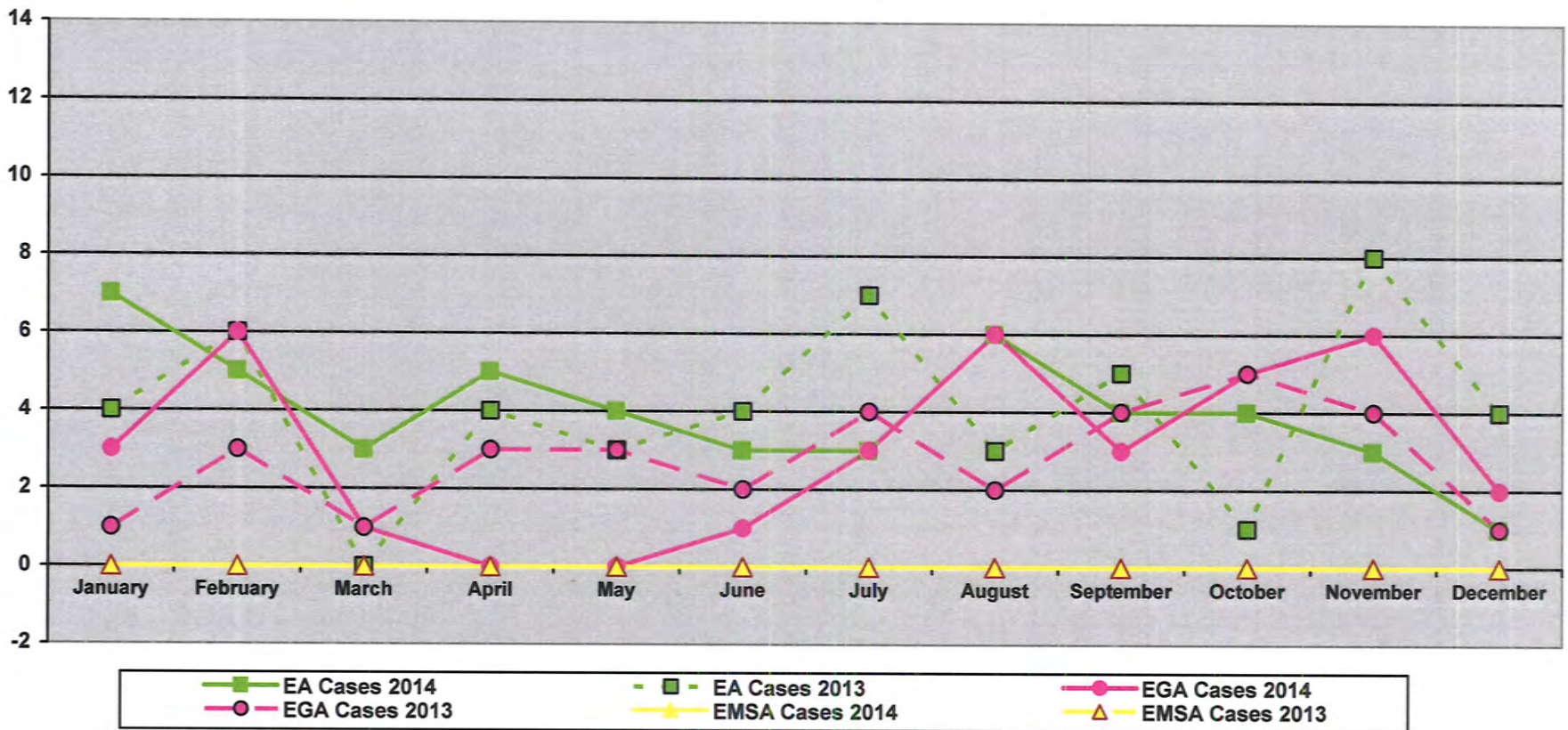
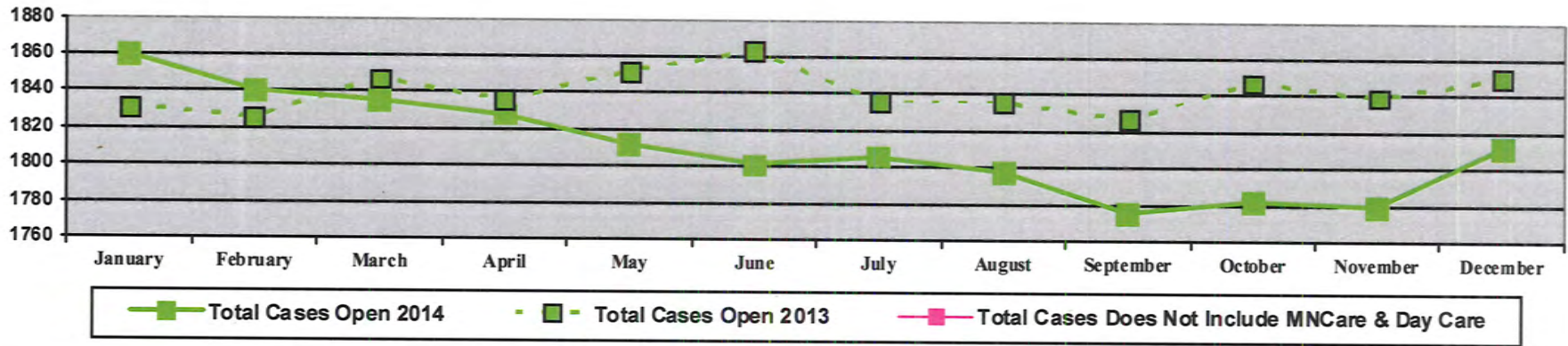
2013 - 2014

Page # 2

	Jan	Feb	Mar	Apr	May	Jun	Jul	Aug	Sep	Oct	Nov	Dec	Avg
GR - Cases - 2014	61	62	62	68	66	66	66	68	69	65	67	67	66
GR - Cases - 2013	63	65	66	64	65	67	63	62	63	61	62	59	63
Food Support - Cases - 2014	887	852	859	845	830	797	803	779	788	787	809	814	821
Food Support - Cases - 2013	897	898	925	925	914	911	919	927	902	915	897	898	911
DWP - 2014	12	11	12	14	11	7	6	5	6	5	3	5	89
DWP - 2013	8	5	8	8	11	13	14	10	4	7	6	10	9
WB (Work Benefit) - 2014	16	18	20	18	22	20	26	25	26	24	32	0	21
WB (Work Benefit) - 2013	15	17	20	19	23	14	20	22	12	21	26	22	19

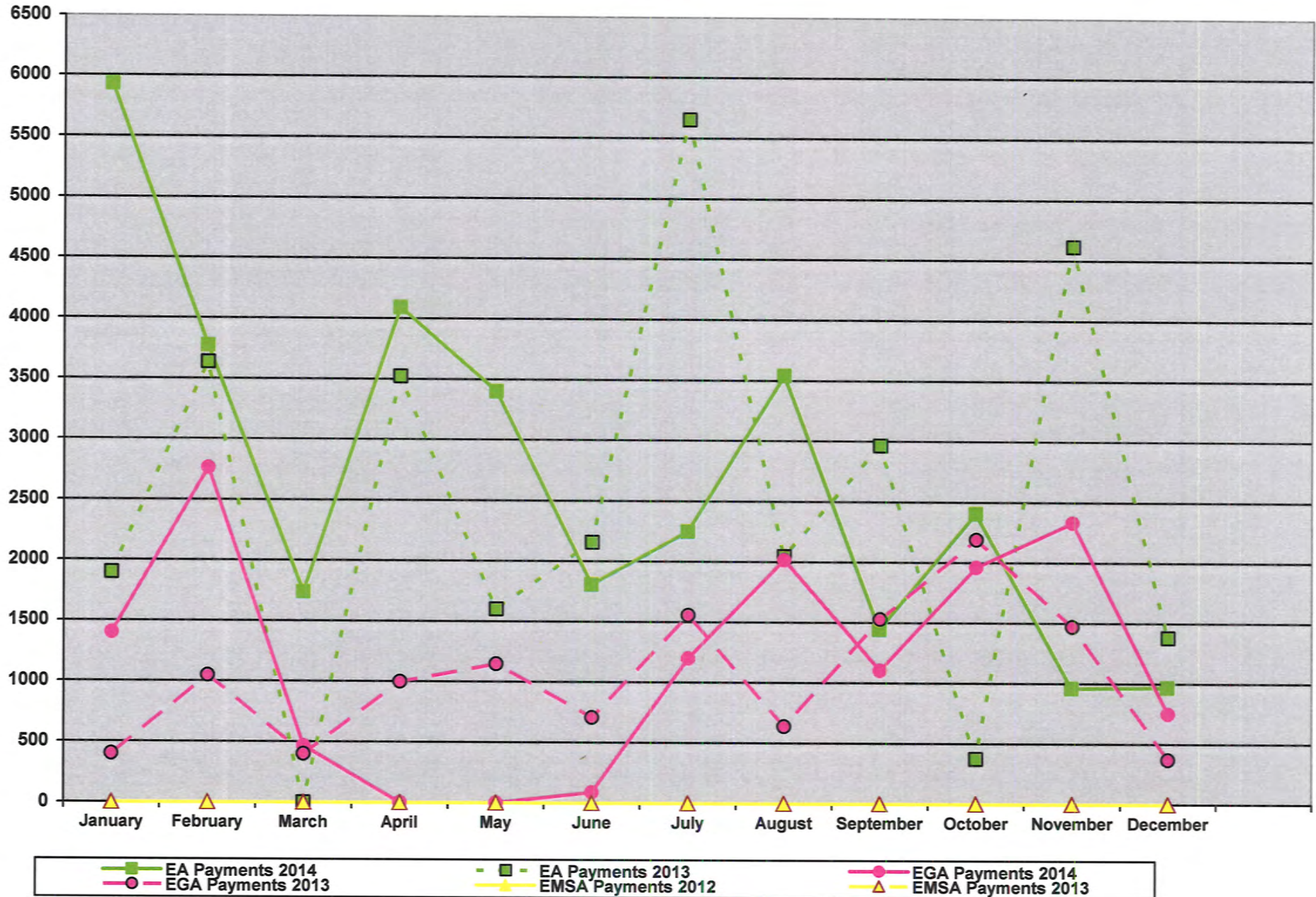
INCOME MAINTENANCE CASELOAD STATISTICS

Chart 1



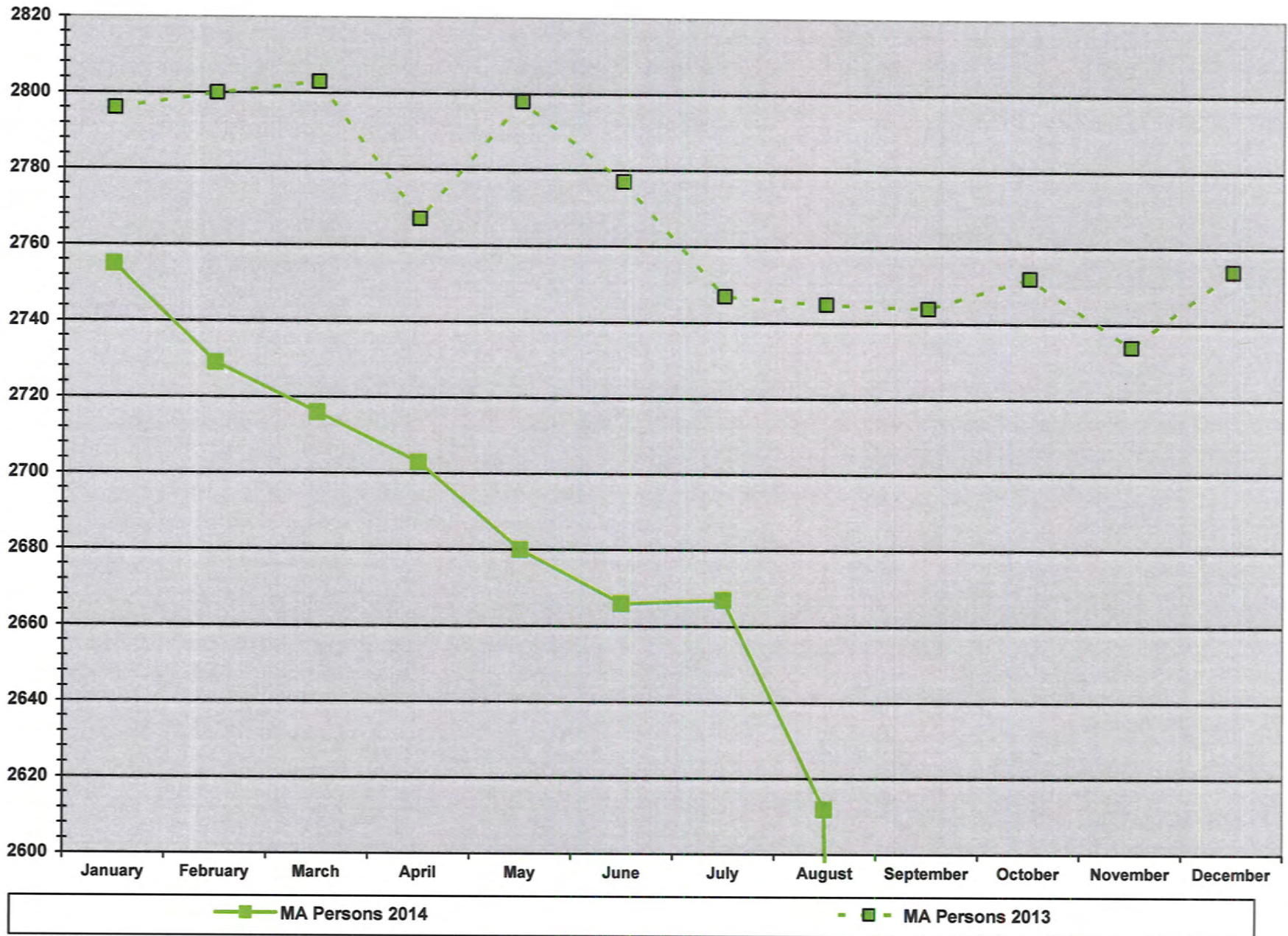
INCOME MAINTENANCE CASELOAD STATISTICS

Chart 2



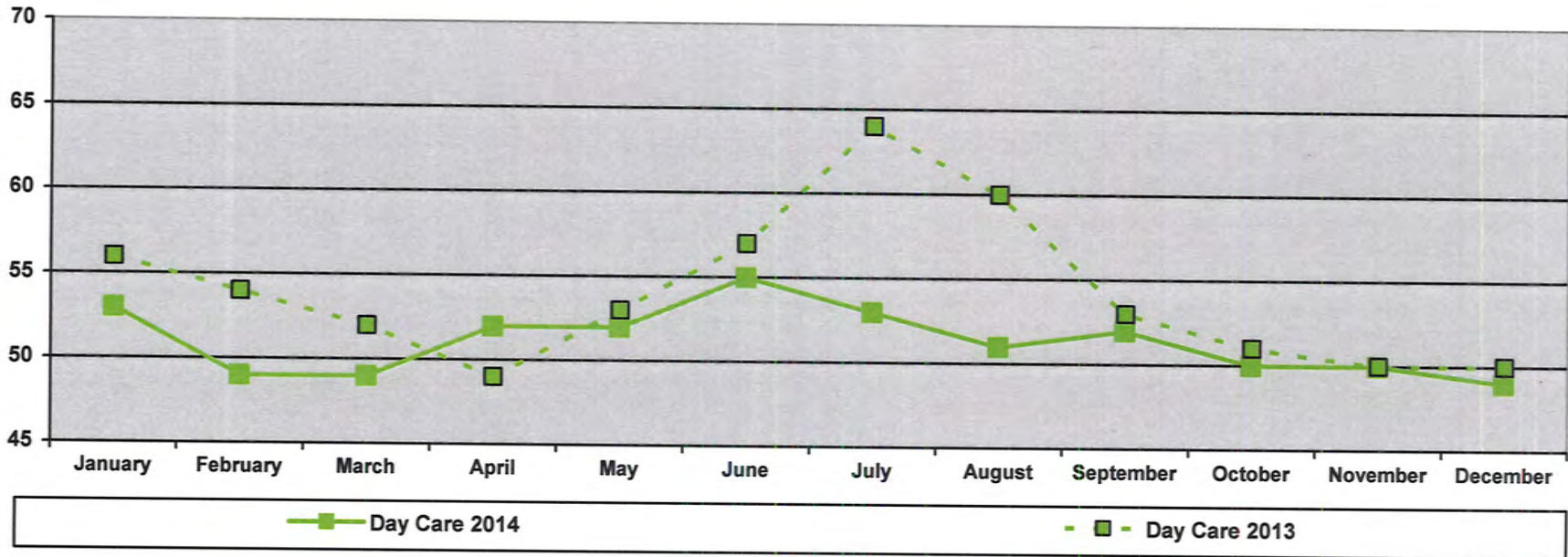
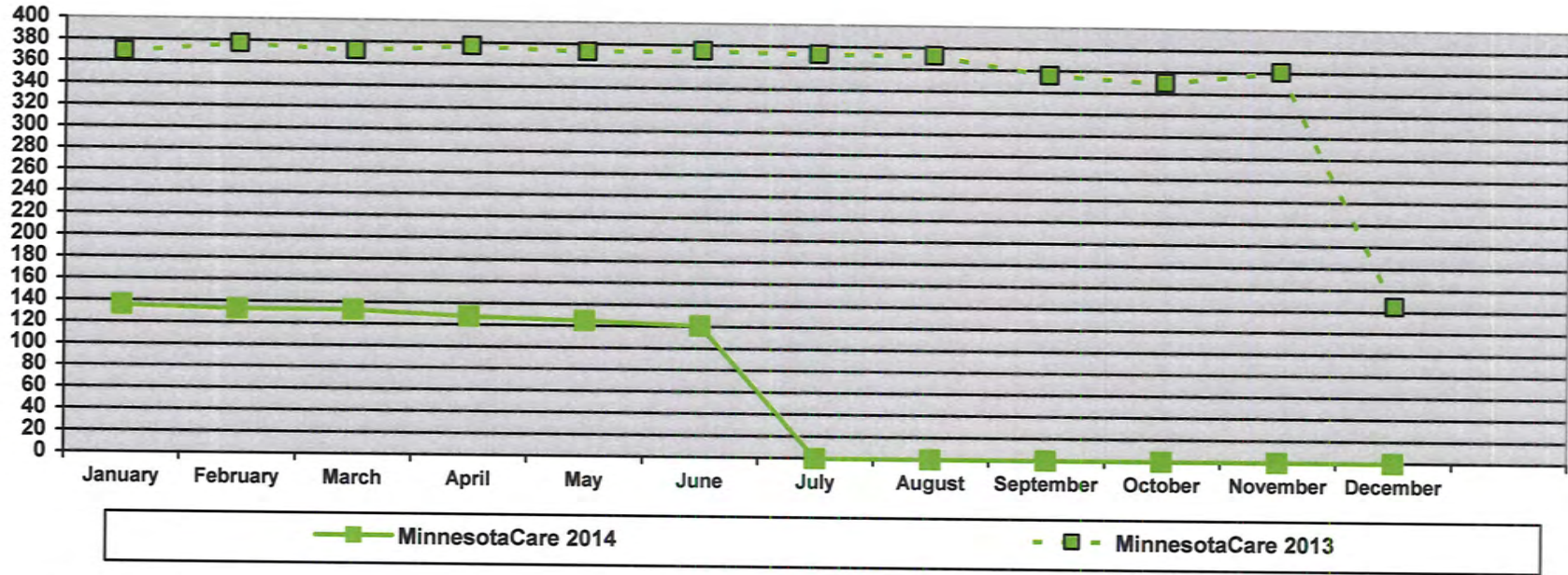
INCOME MAINTENANCE CASELOAD STATISTICS

Chart 3



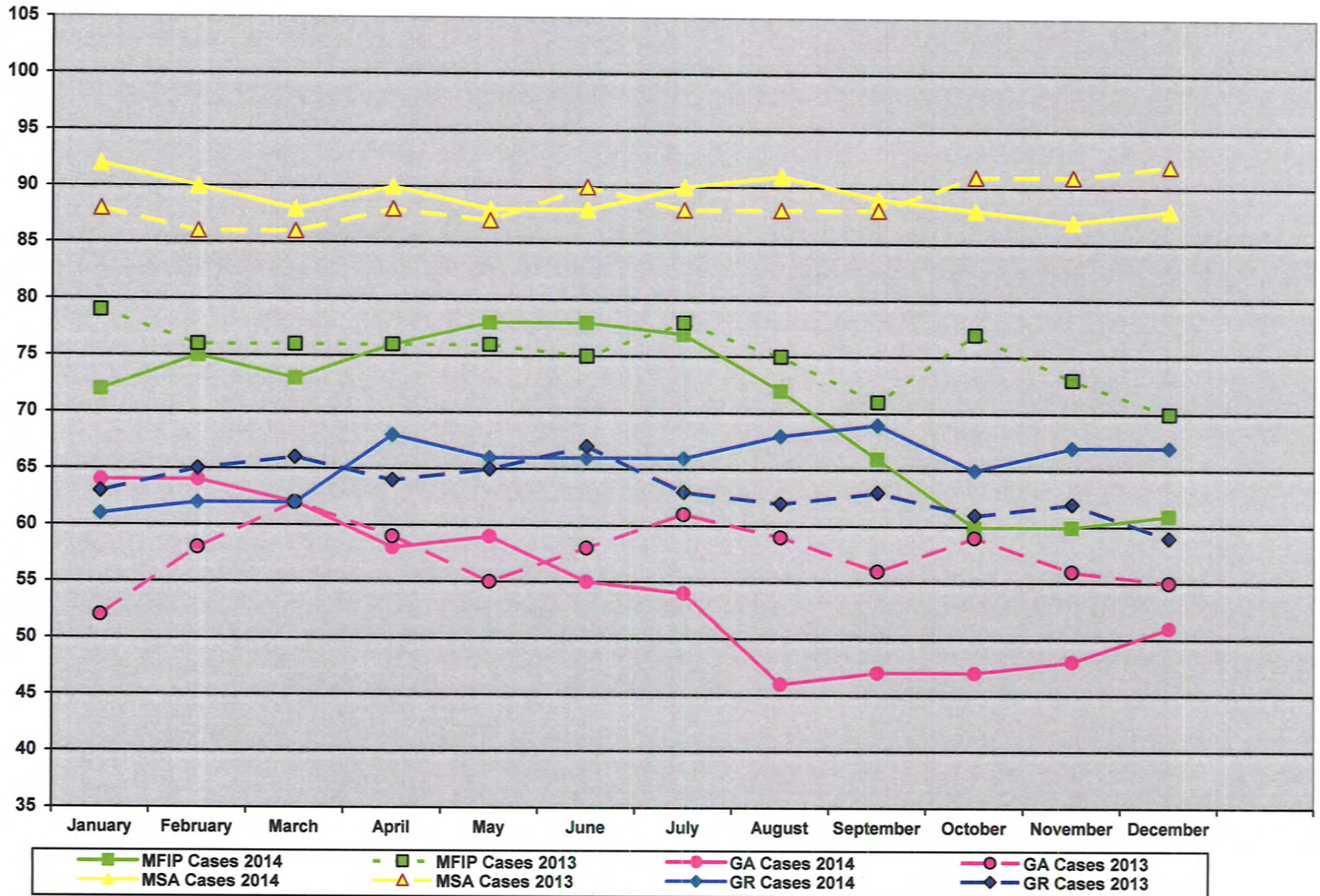
INCOME MAINTENANCE CASELOAD STATISTICS

Chart 4



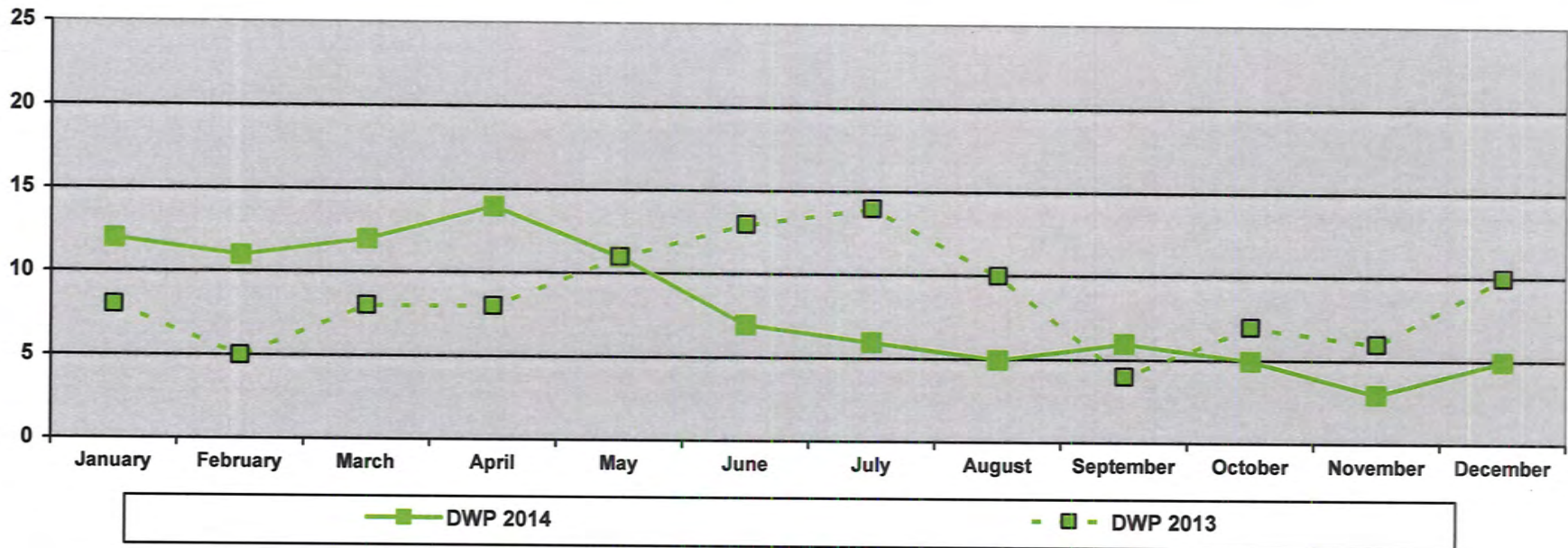
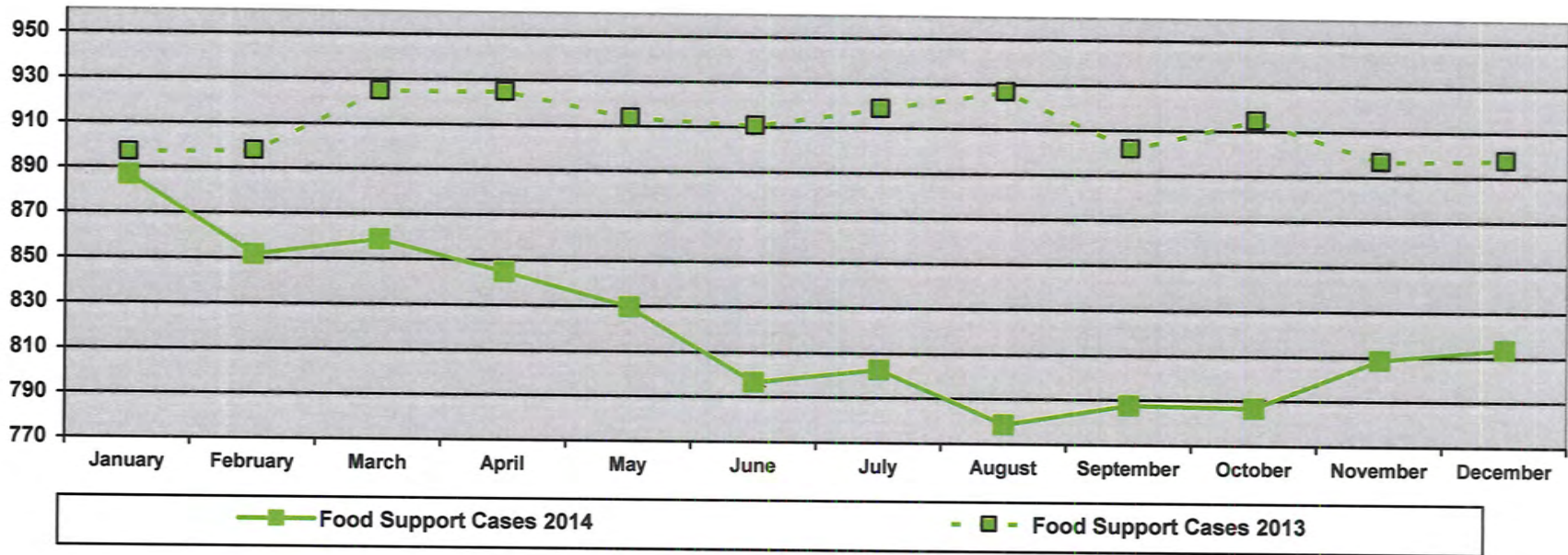
INCOME MAINTENANCE CASELOAD STATISTICS

Chart 5



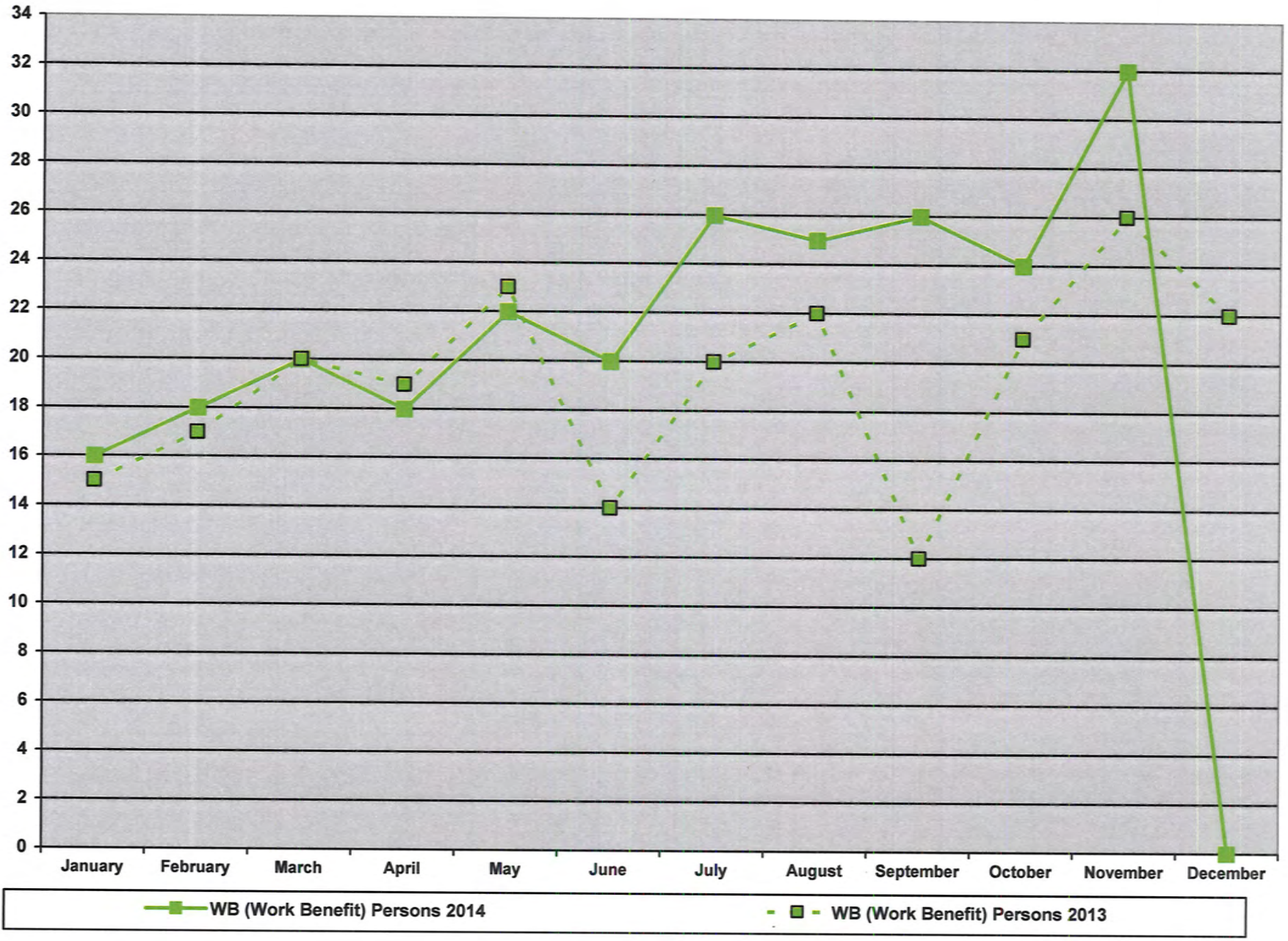
INCOME MAINTENANCE CASELOAD STATISTICS

Chart 6



INCOME MAINTENANCE CASELOAD STATISTICS

Chart 7



SOCIAL SERVICE CASELOAD STATISTICS

2013 - 2014

	Jan	Feb	Mar	Apr	May	Jun	Jul	Aug	Sep	Oct	Nov	Dec	Avg
Total Cases Open - 2014	518	526	511	528	540	547	540	529	518	540	549	567	534
Total Cases Open - 2013	519	489	478	496	533	542	523	511	501	524	530	517	514
Total Number of Workgroups - 2014	536	544	530	550	566	572	563	553	544	563	573	594	557
Total Number of Workgroups - 2013	540	510	498	516	556	566	547	533	523	541	550	538	535
Total Client Count - 2014	1068	1084	1096	1143	1194	1183	1130	1109	1065	1115	1084	1126	1116
Total Client Count - 2013	997	963	940	972	1052	1062	1032	1031	1000	1050	1079	1044	1019
Cases Opened During the Month - 2014	34	30	40	35	36	35	17	29	42	48	40	43	36
Cases Opened During the Month - 2013	41	25	38	25	36	35	27	21	23	37	29	21	30
Cases Closed During the Month - 2014	29	23	31	29	22	22	42	13	28	27	31	27	27
Cases Closed During the Month - 2013	38	26	27	26	21	37	36	40	15	20	29	30	29
Intakes During the Month - 2014	64	64	75	55	57	67	62	64	83	82	53	72	67
Intakes During the Month - 2013	81	72	66	63	68	59	84	57	51	70	48	61	65
Children in Out of Home Placements													
* Individual Children - Monthly - 2014	22	21	27	26	29	29	27	27	26	20	19	21	25
* Individual Children - Monthly - 2013	22	25	26	22	24	23	24	25	23	23	26	24	24
Adm - 2014	11	10	14	16	15	15	18	18	18	14	12	13	15
Adm - 2013	14	15	14	9	8	10	15	17	16	17	20	14	14
IV-E - 2014	11	11	13	10	14	14	9	9	8	6	7	8	10
IV-E - 2013	8	10	11	13	16	13	9	8	7	6	6	10	10
Changes in Placements Away From Home - 2014	10	7	9	3	12	11	5	4	7	3	1	5	6
Changes in Placements Away From Home - 2013	0	2	5	8	3	5	0	5	2	6	3	0	3
Court Appearances - 2014	16	11	13	15	28	28	10	23	11	15	1	14	15
Court Appearances - 2013	17	17	17	20	17	15	9	3	14	18	4	18	14
Maltreatment Screenings - Adult - 2014	5	8	9	11	12	12	14	12	13	13	9	10	11
Maltreatment Screenings - Adult - 2013	13	11	13	10	10	11	12	5	5	9	8	14	10
Maltreatment Screenings - Children - 2014	15	15	20	11	13	6	5	8	16	12	12	7	12
Maltreatment Screenings - Children - 2013	9	11	11	15	13	9	17	5	12	11	11	5	11

SOCIAL SERVICE CASELOAD STATISTICS

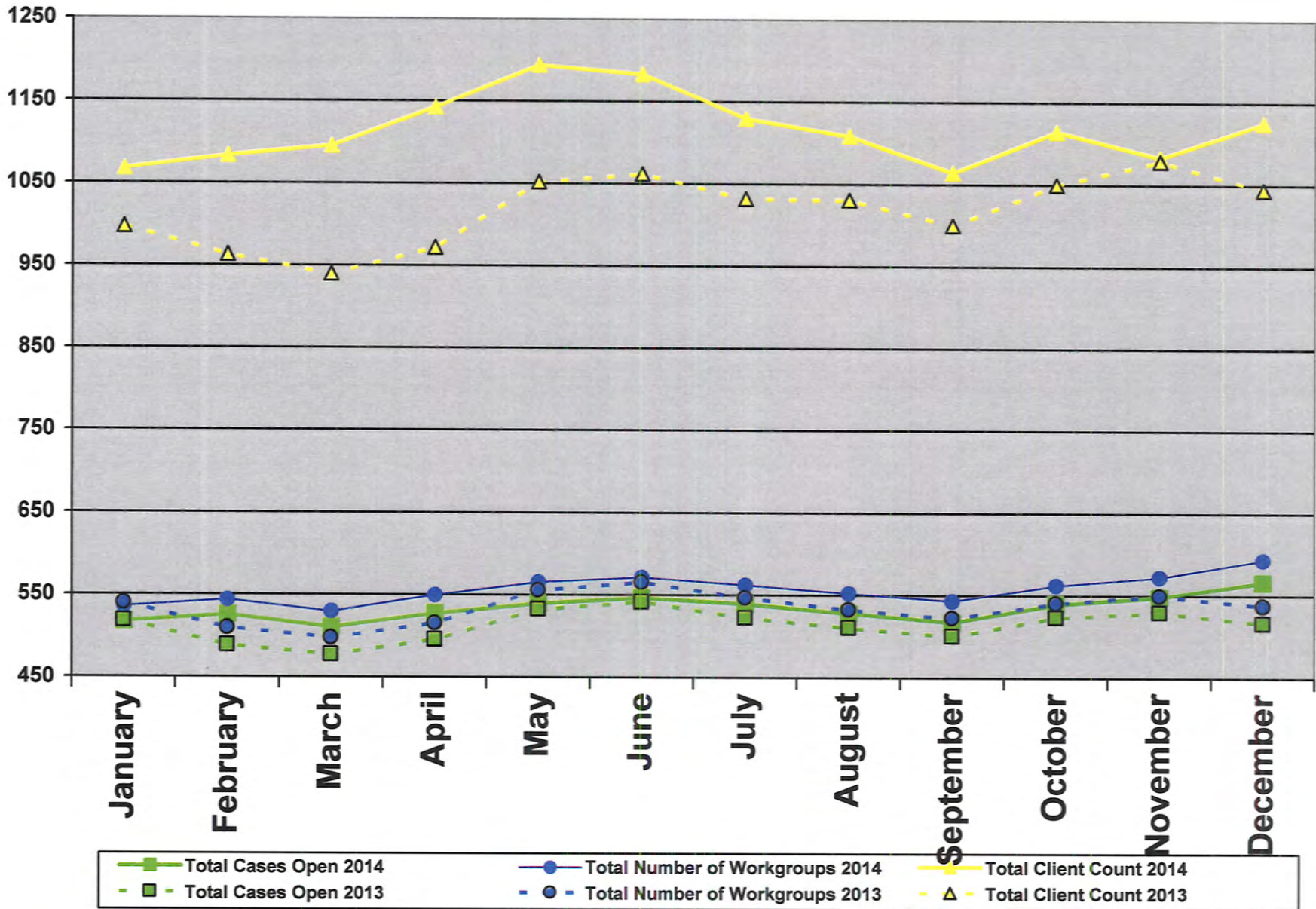
2013 - 2014 - Page # 2

	Jan	Feb	Mar	Apr	May	Jun	Jul	Aug	Sep	Oct	Nov	Dec	Avg
Day Care Homes - Total # Licensed - 2014	28	27	26	26	26	27	27	28	28	28	28	28	27
Day Care Homes - Total # Licensed - 2013	28	28	29	29	30	30	30	30	30	30	29	28	29
Child Foster Care Homes - Total # Licensed - 2014	10	11	11	11	12	12	12	13	13	13	13	13	12
Child Foster Care Homes - Total # Licensed - 2013	15	11	8	8	9	9	9	9	10	9	10	10	10
Adult Foster Care Homes - Total # Licensed - 2014	9	8	8	8	8	7	7	7	8	9	9	9	8
Adult Foster Care Homes - Total # Licensed - 2013	9	9	9	9	9	9	9	9	9	9	8	8	9
Corporate Foster Care Homes - 2014	12	12	12	12	12	12	12	12	12	12	12	12	12
Corporate Foster Care Homes - 2013	13	13	13	13	13	13	13	12	12	12	12	12	13

SOCIAL SERVICE CASELOAD STATISTICS

Chart 1

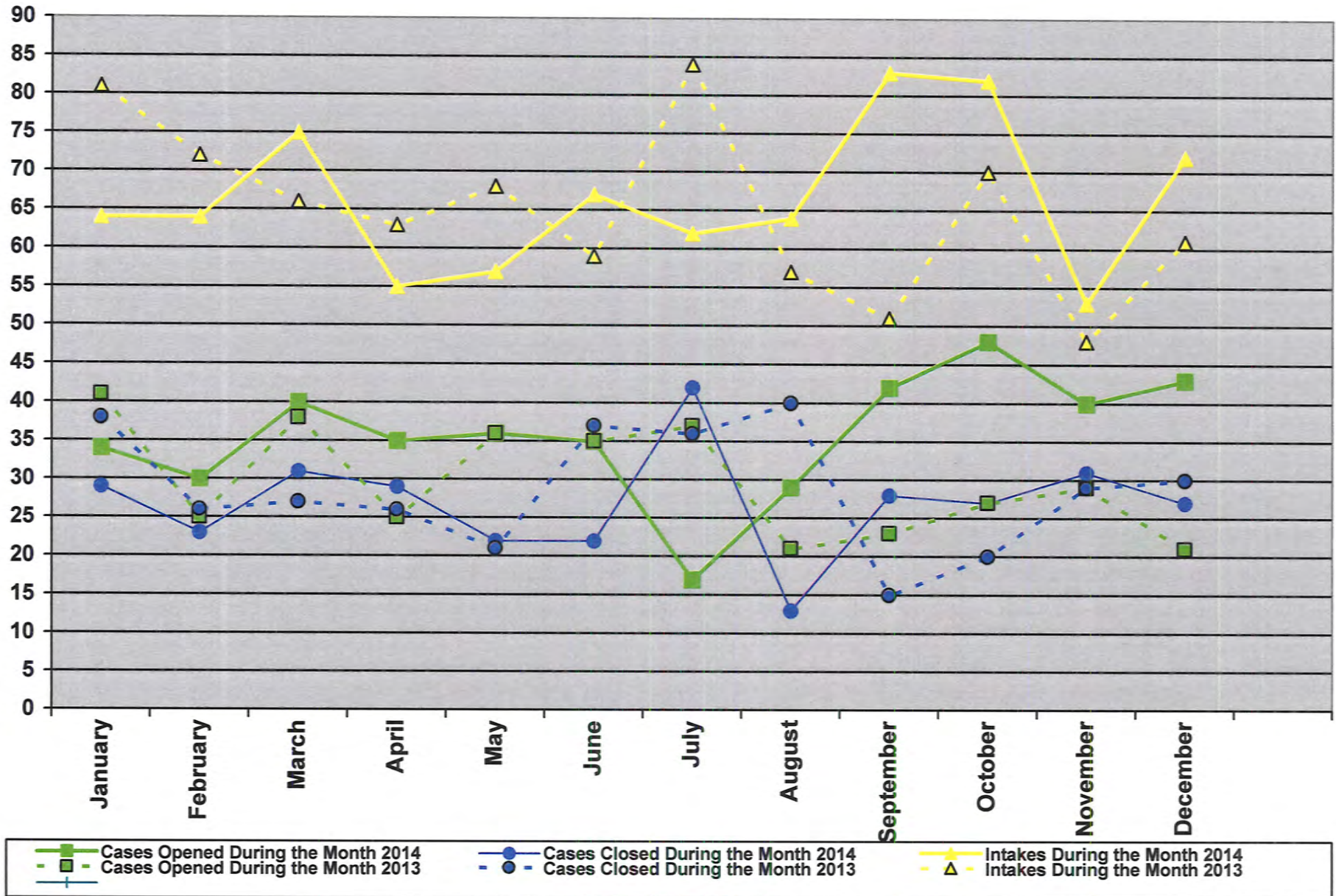
Total Cases Open / Total Number of Workgroups / Total Client Count



SOCIAL SERVICE CASELOAD STATISTICS

Chart 2

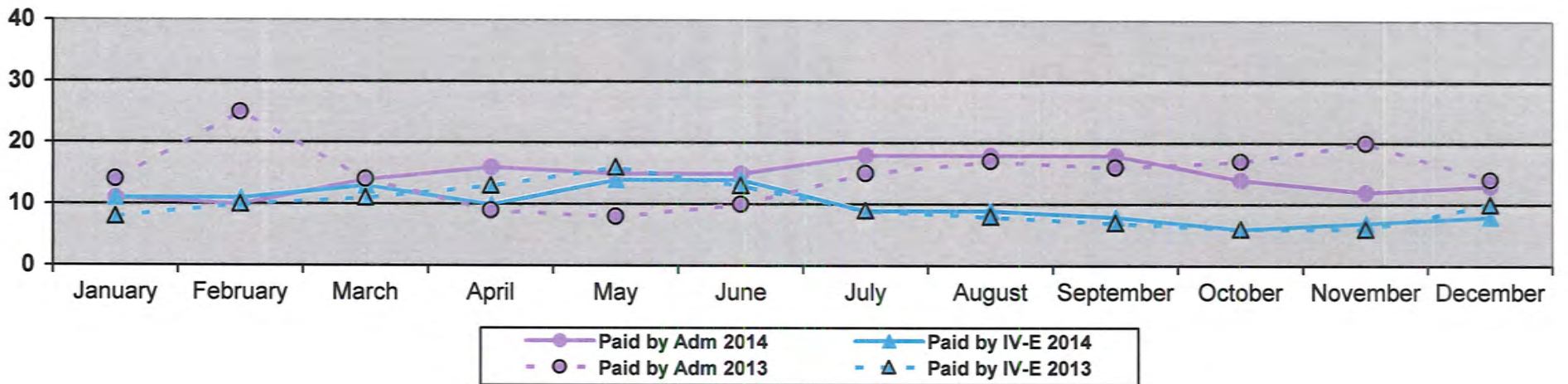
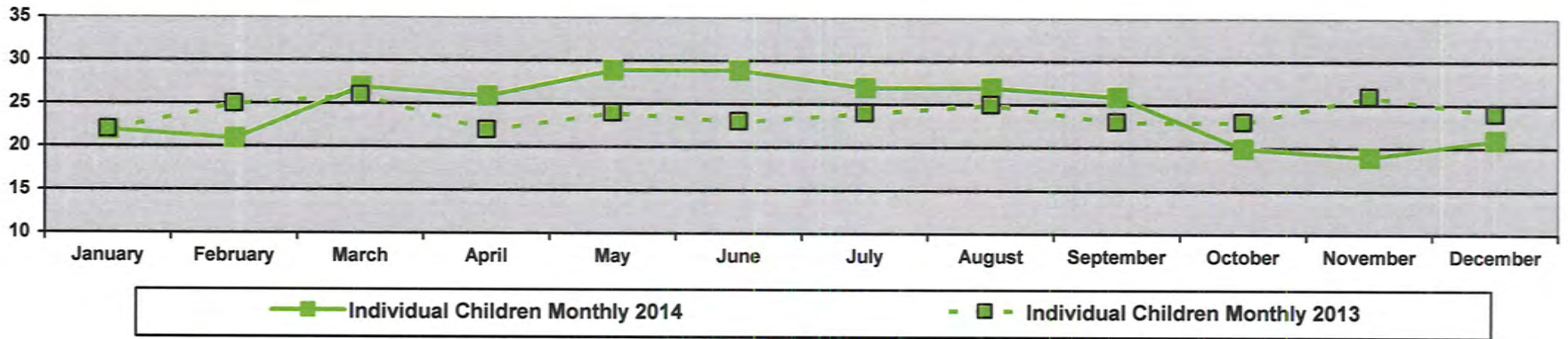
Cases Opened During the Month / Cases Closed During the Month / Closed Assessments



SOCIAL SERVICE CASELOAD STATISTICS

Children in Out of Home Placements

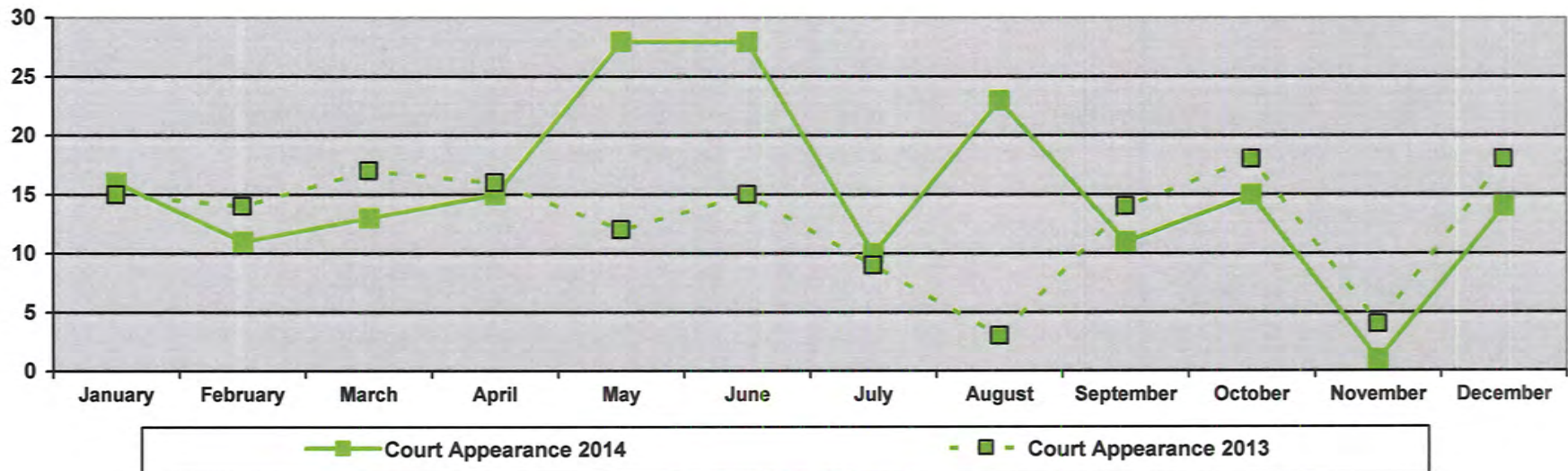
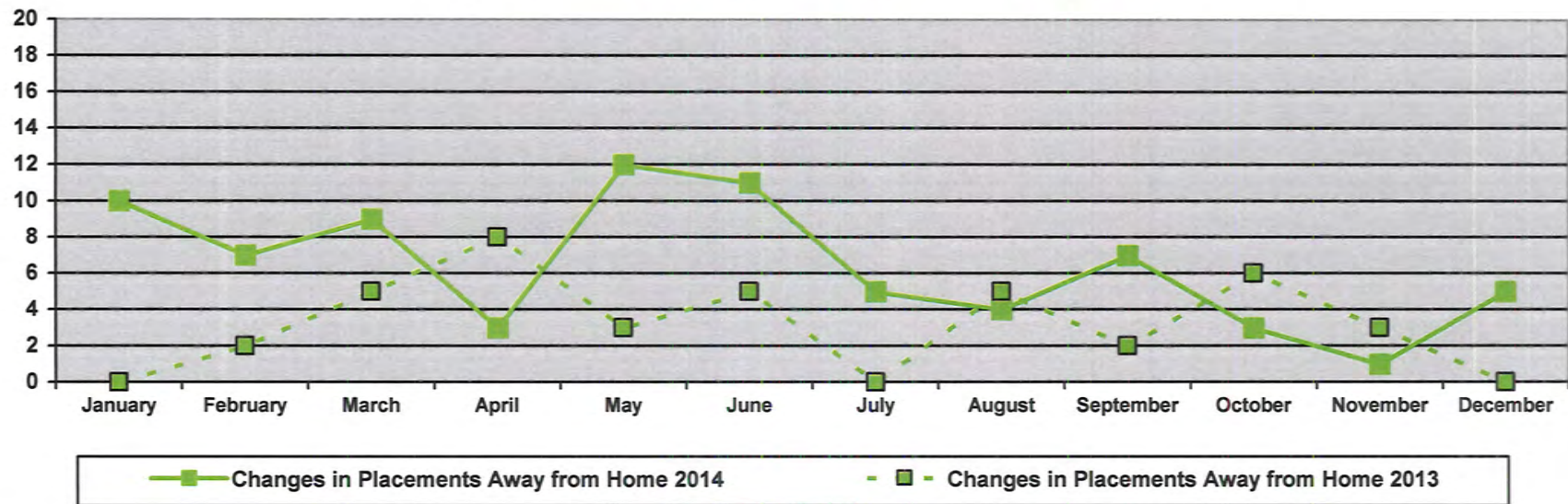
Chart 3



SOCIAL SERVICE CASELOAD STATISTICS

Chart 4

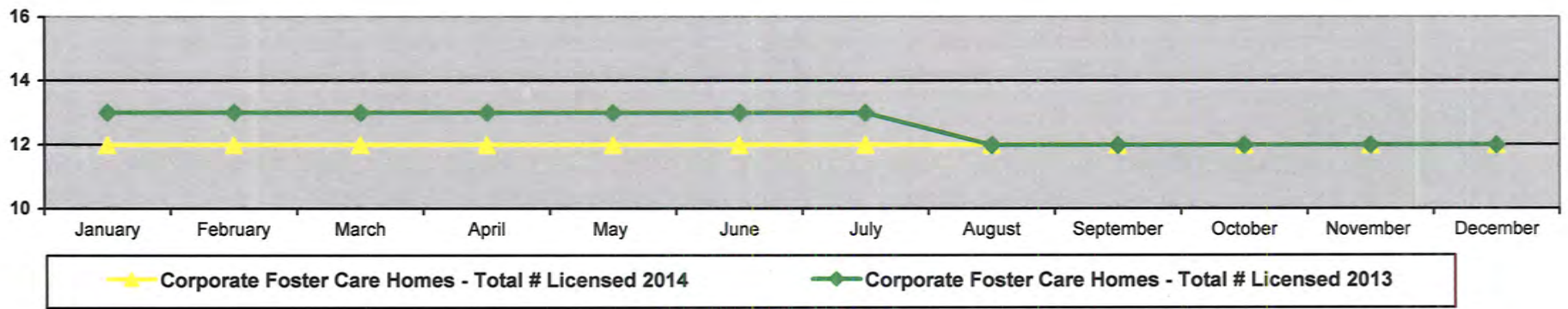
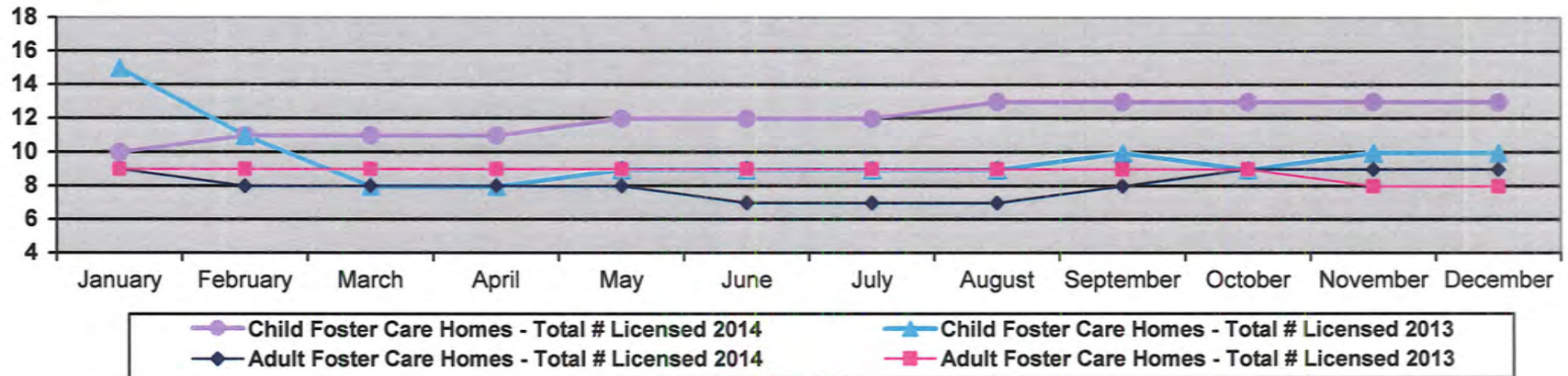
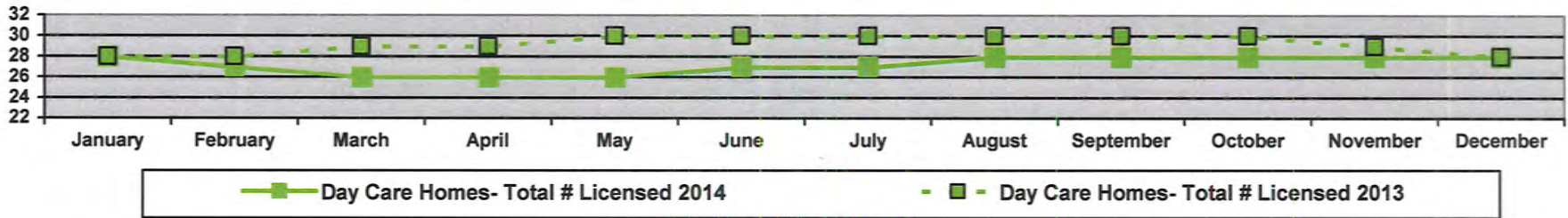
Changes in Placements Away from Home / Court Appearances



SOCIAL SERVICE CASELOAD STATISTICS

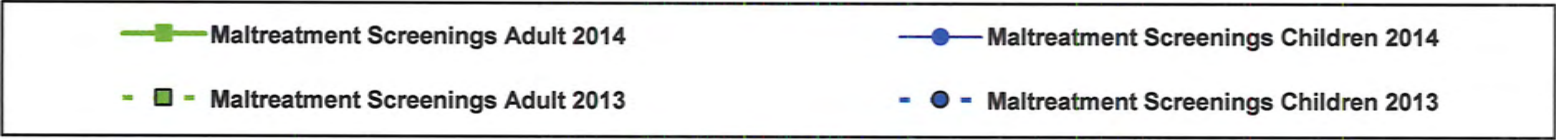
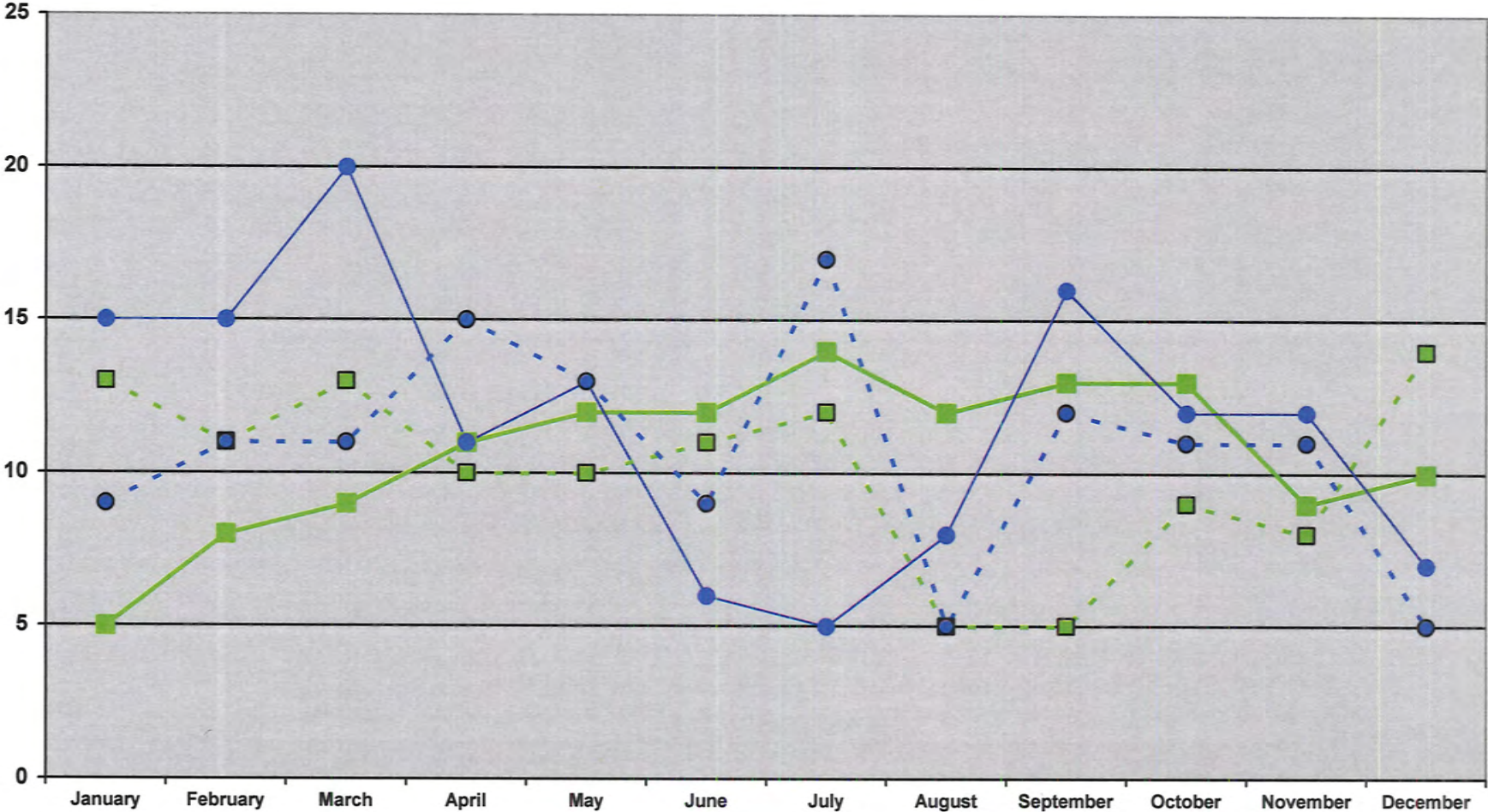
Licensed Day Care Homes, Child, Adult & Corporate Foster Care Homes

Chart 5



SOCIAL SERVICE CASELOAD STATISTICS

Chart 6
Maltreatment Screenings - Adult / Children



PUBLIC HEALTH CASELOAD STATISTICS

Monthly Essential Local Activities Report

2013 - 2014 - Page # 2

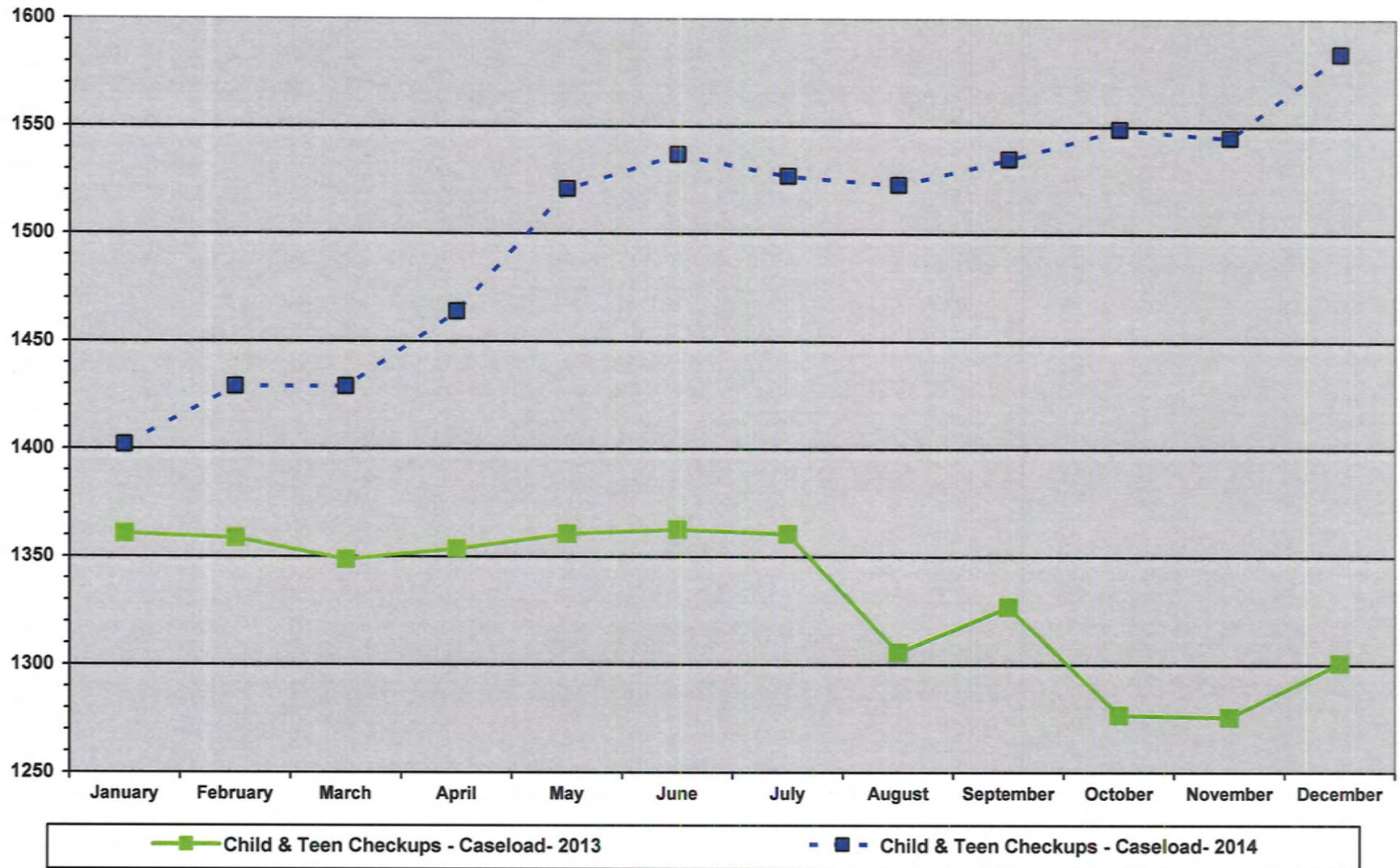
	Staff	Jan	Feb	Mar	Apr	May	Jun	Jul	Aug	Sep	Oct	Nov	Dec	Avg	Totals
Injury Prevention															
Car Seats Distributed - 2014	NL/EM	4	4	4	5	7	4	6	7	5	4	10	4	5	64
Car Seats Distributed - 2013	NL/EM	1	2	0	3	1	3	0	3	1	1	2	1	2	18
PREVENT THE SPREAD OF INFECTIOUS DISEASE															
Disease Prevention & Control (DP&C)															
Office Visits (Blood Pressure Checks, Lice Checks, Temperature Checks, Ear Checks, Weight Checks, Hearing or Vision Checks) - 2014	JW	112	85	74	55	20	2	3	1	1	1	3	0	30	357
Office Visits (Blood Pressure Checks, Lice Checks, Temperature Checks, Ear Checks, Weight Checks, Hearing or Vision Checks) - 2013	JW	63	63	68	37	19	4	4	2	7	2	1	5	23	275
Immunizations															
Childhood, Adult, Flu, H1N1, etc. - 2014	JW	4	0	10	90	8	2	1	5	9	588	185	0	75	902
Childhood, Adult, Flu, H1N1, etc. - 2013	JW	37	4	4	30	27	6	0	1	210	446	186	4	80	955
PROTECT AGAINST ENVIRONMENTAL HEALTH HAZARDS															
Lead Screenings - 2014	JW	0	0	2f/u	1f/u	1f/u	2f/u	1f/u	2f/u	0	3 t	1f/u	0	0	0
Lead Screenings - 2013	JW	1	0	0	0	0	0	0	0	4	0	0	0	0	5
PREPARE FOR AND RESPOND TO DISASTERS AND ASSIST COMMUNITIES IN RECOVERY															
Health Alerts - 2014	SD	0	0	0	1	0	0	0	0	0	0	1	0	0	2
Health Alerts - 2013	SD	0	0	1	0	0	0	1	1	0	0	2	0	0	5
Health Advisories - 2014	SD	0	0	0	2	3	2	1	0	2	2	0	2	1	14
Health Advisories - 2013	SD	0	0	0	3	2	3	2	1	0	0	0	0	1	11
Exercises - 2014	SD	0	0	0	0	2	0	0	1	1	0	1	3	1	8
Exercises - 2013	SD	0	2	0	1	2	0	1	0	2	0	1	1	1	10
ASSURE THE QUALITY OF ACCESSIBLE HEALTH SERVICES															
Community Based Services (CBS) Caseload -2014	JP	174	175	173	168	165	163	175	181	188	204	211	216	183	
Community Based Services (CBS) Caseload -2013	JP	175	175	175	175	176	177	177	175	176	174	173	173	175	
CBS Billable Units - 2014	JP	1150	956	1491	1642	1266	1423	1307	1329	1333	1476	1075	1421	1322	
CBS Billable Units - 2013	JP	1424	1122	1268	1134	1235	1034	1059	925	945	1262	1028	1265	1142	

PUBLIC HEALTH STATISTICS

PROMOTE HEALTHY COMMUNITIES & HEALTHY BEHAVIORS

Chart 1

Child & Teen Checkups (C&TC) Outreach - Caseloads



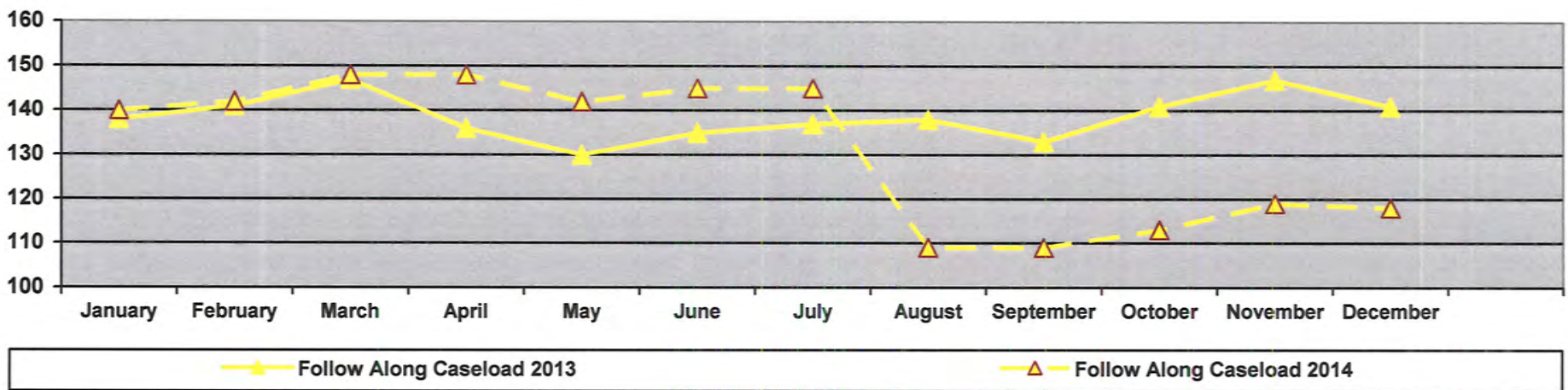
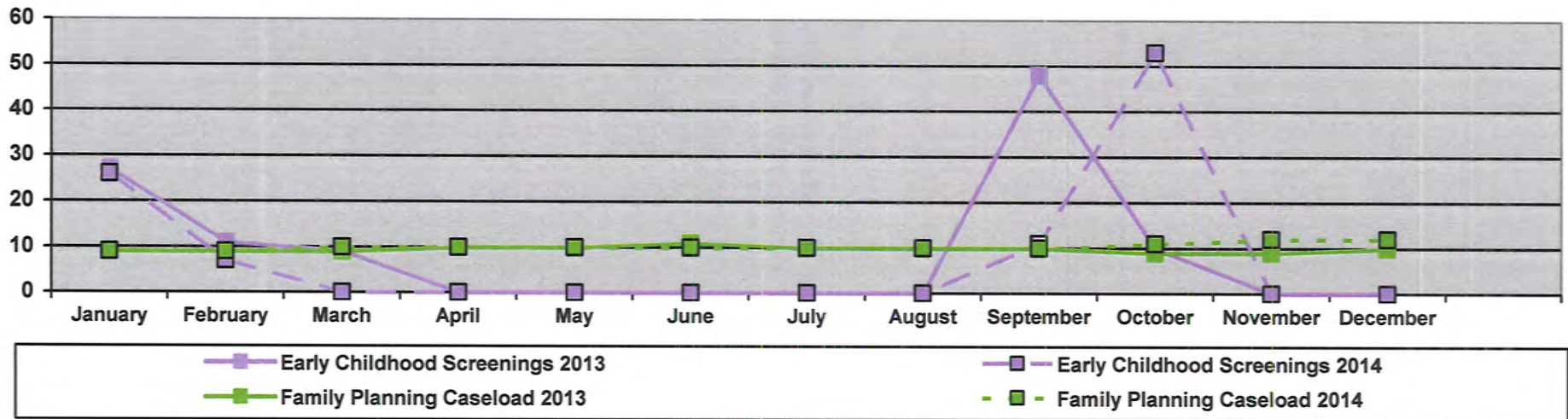
PUBLIC HEALTH STATISTICS

PROMOTE HEALTHY COMMUNITIES & HEALTHY BEHAVIORS

Chart 2

Family Health

Early Childhood Screening (ECS) / Family Planning / Follow Along



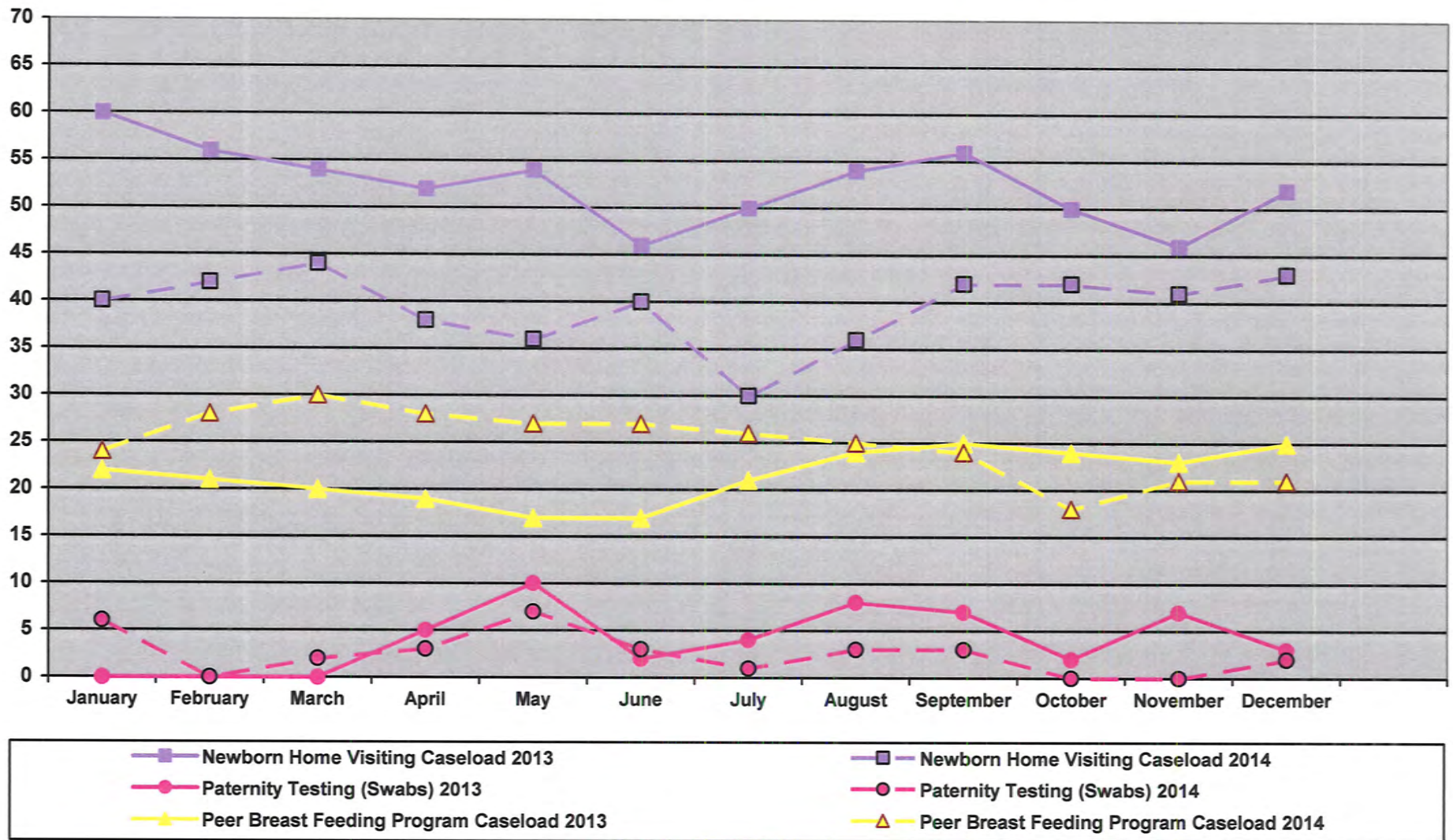
PUBLIC HEALTH STATISTICS

PROMOTE HEALTHY COMMUNITIES & HEALTHY BEHAVIORS

Chart 3

Family Health

Newborn Home Visiting / Paternity Testing / Peer Breast Feeding Program

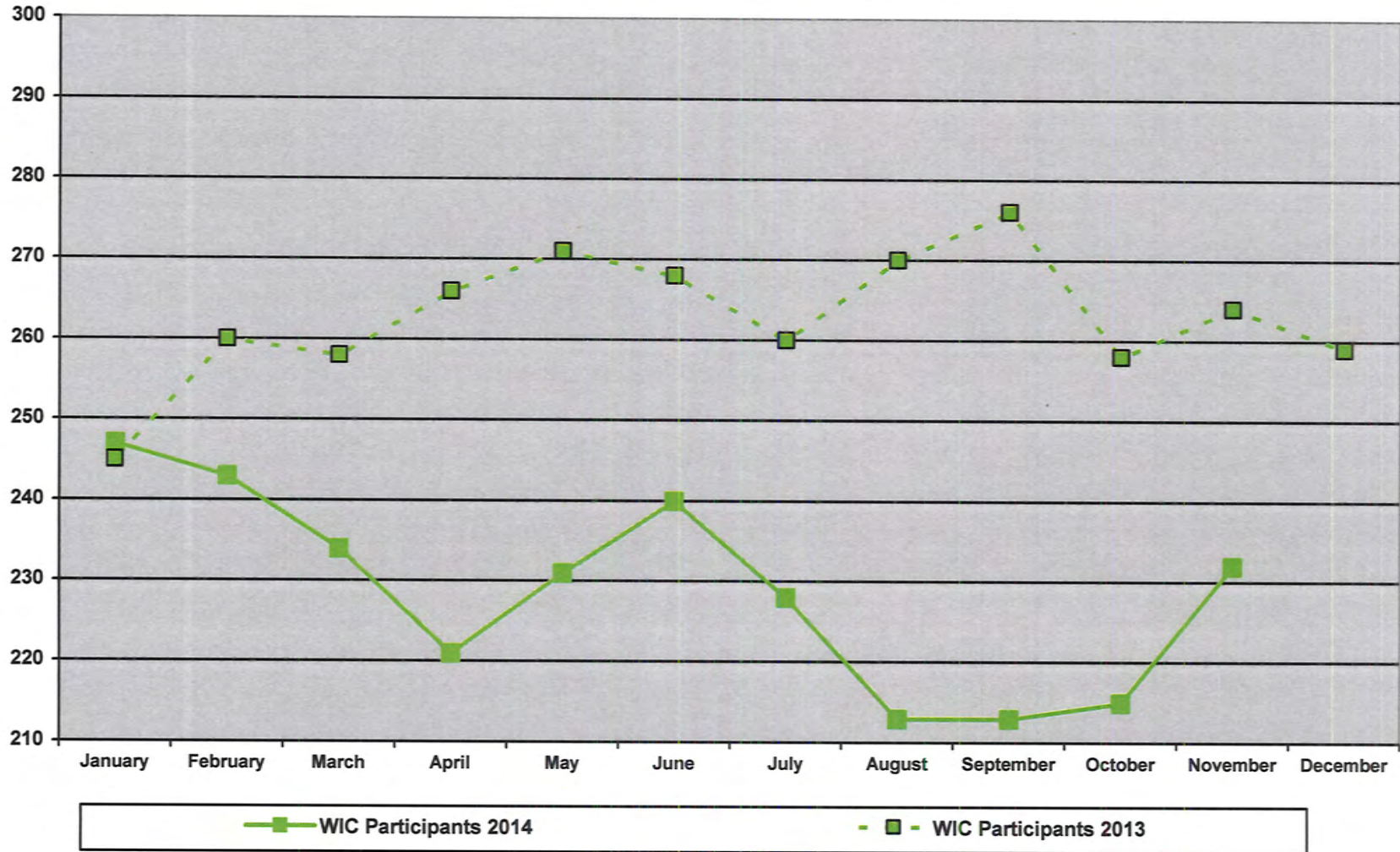


PUBLIC HEALTH STATISTICS

PROMOTE HEALTHY COMMUNITIES & HEALTHY BEHAVIORS

Chart 4

WIC (Women, Infants and Children) Participants

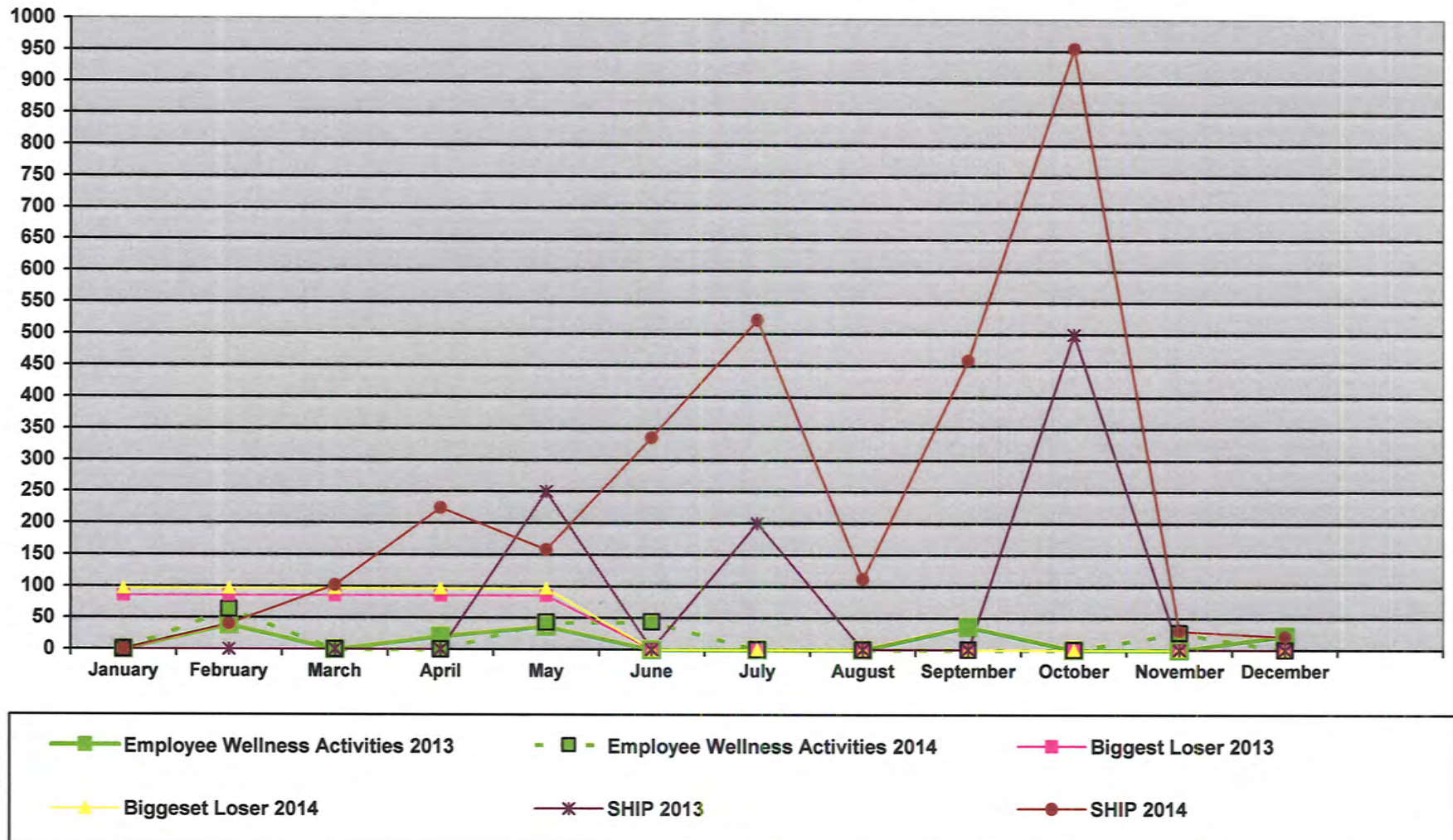


PUBLIC HEALTH STATISTICS

PROMOTE HEALTHY COMMUNITIES & HEALTHY BEHAVIORS

Chart 5

General Health Promotion (Participants)
Aitkin County Health Promotion Team Employee Wellness Activities / Biggest Loser / SHIP

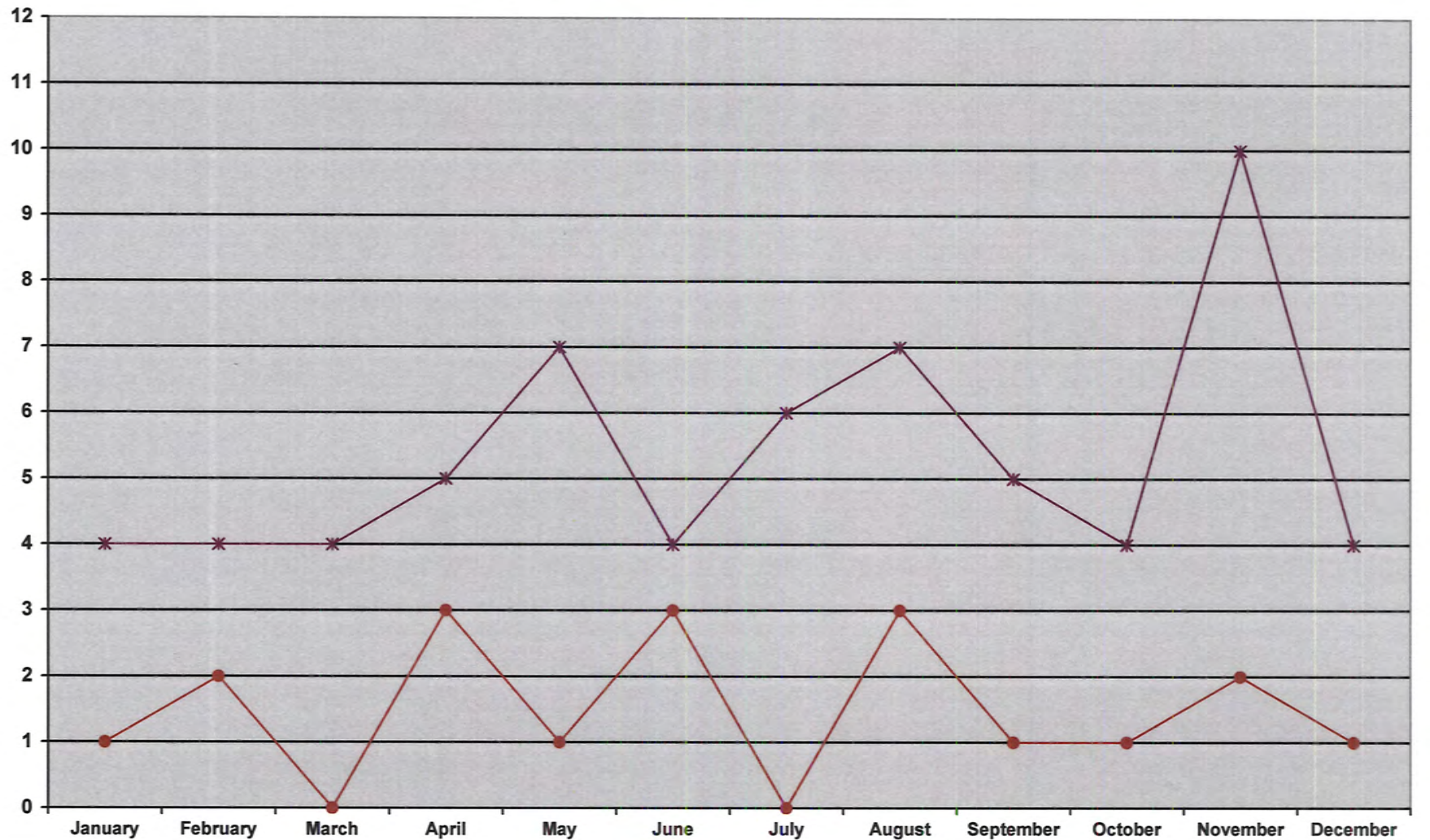


PUBLIC HEALTH STATISTICS

PROMOTE HEALTHY COMMUNITIES & HEALTHY BEHAVIORS

Chart 6

Injury Prevention – Car Seat Distribution



—*— Car Seats Distributed 2014

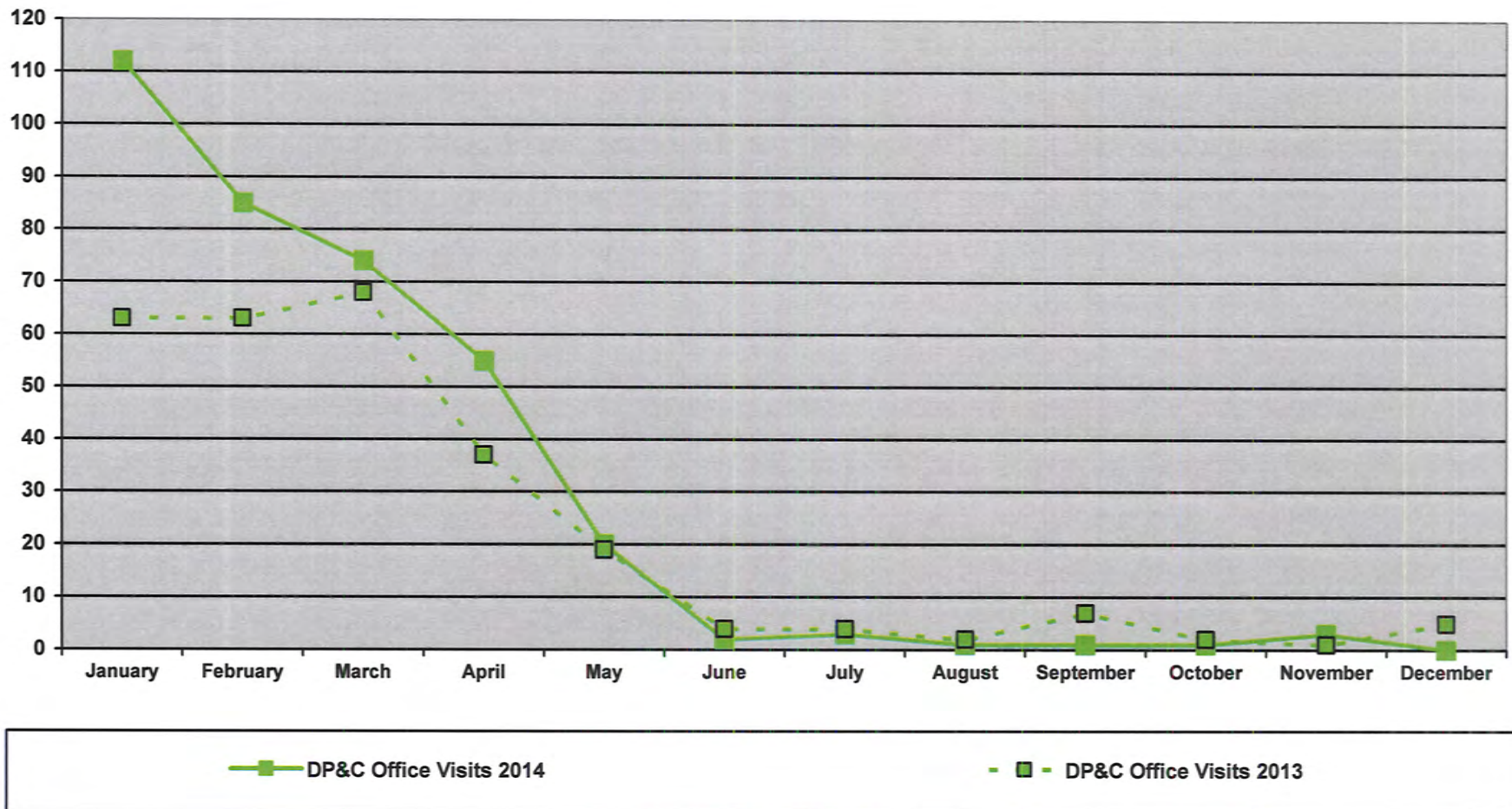
—●— Car Seats Distributed 2013

PUBLIC HEALTH STATISTICS

PROMOTE HEALTHY COMMUNITIES & HEALTHY BEHAVIORS

Chart 7

Disease Prevention & Control (DP&C) - Office Visits
Includes: Blood Pressure Checks, Lice Checks, Temperature Checks, Ear Checks, Weight Checks, Hearing or Vision Checks

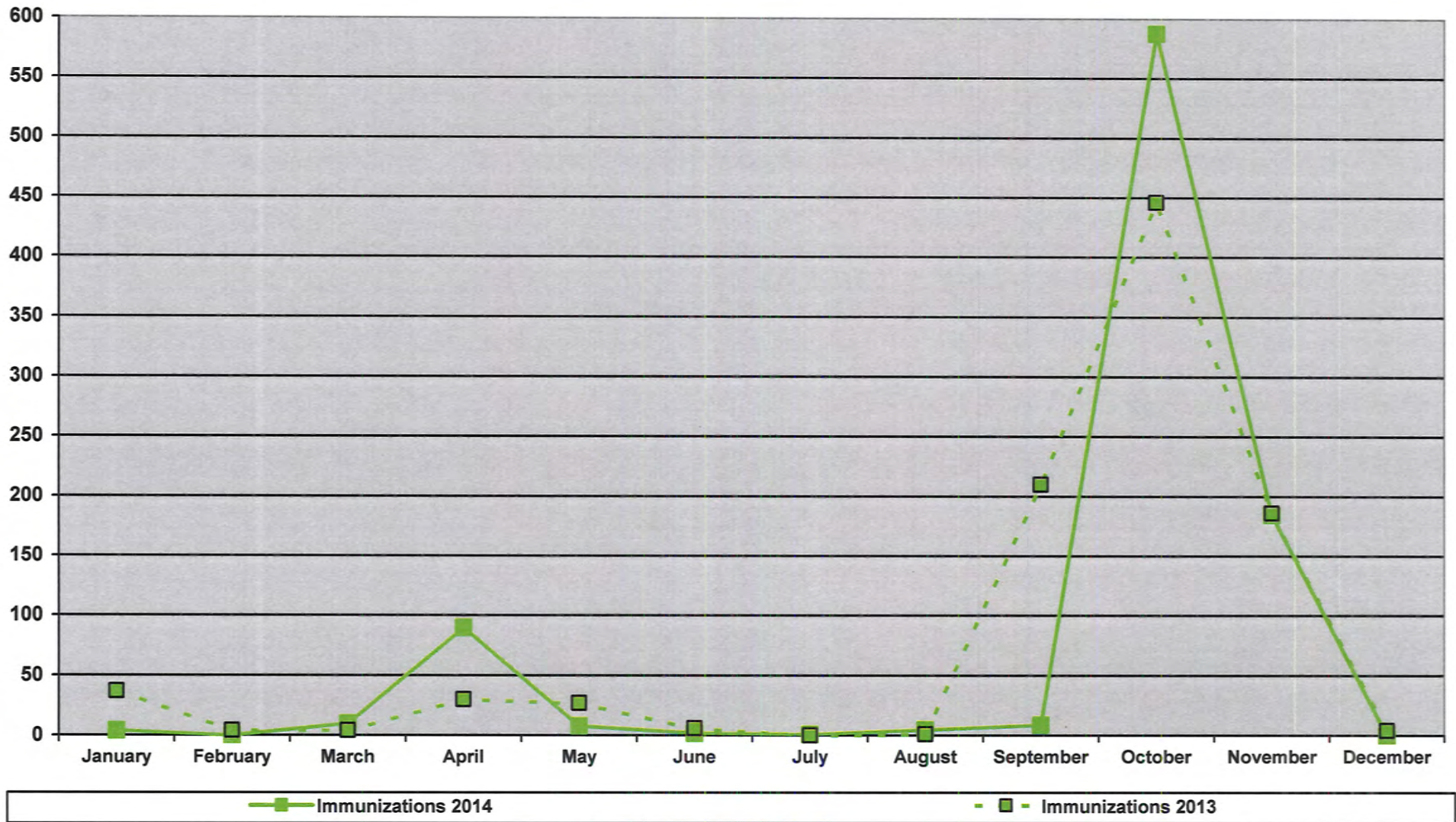


PUBLIC HEALTH STATISTICS

PREVENT THE SPREAD OF INFECTIOUS DISEASE

Chart 8

Immunizations – Childhood/Adult/Flu/TB
Trainings (Blood Borne Pathogens, Lyme Disease, Infection Control, Sexually Transmitted Disease/Infections)

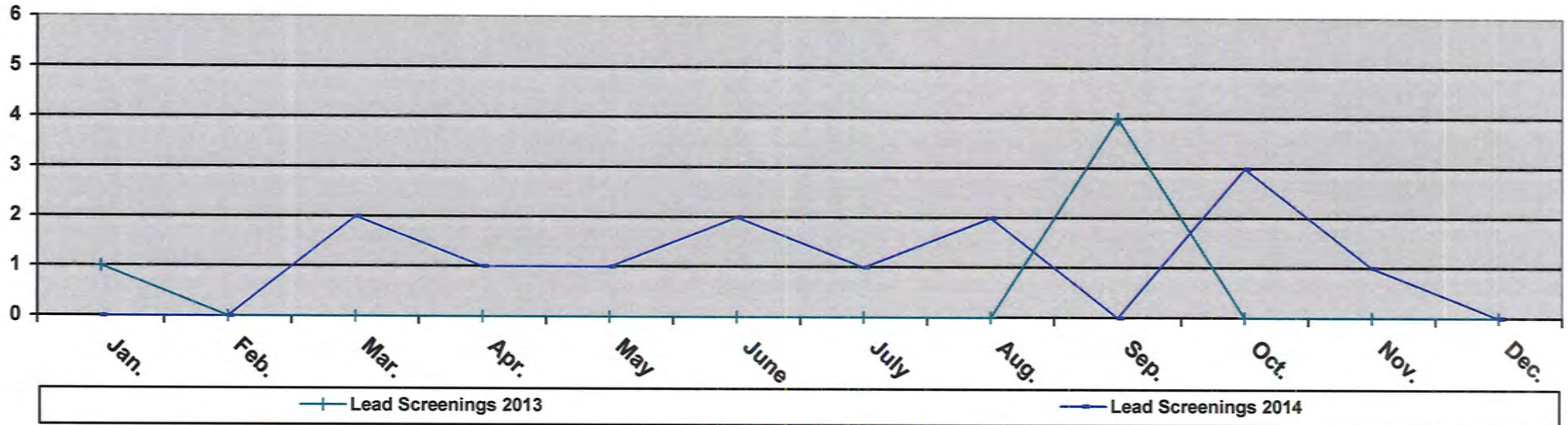


PUBLIC HEALTH STATISTICS

PROTECT AGAINST ENVIRONMENTAL HEALTH HAZARDS

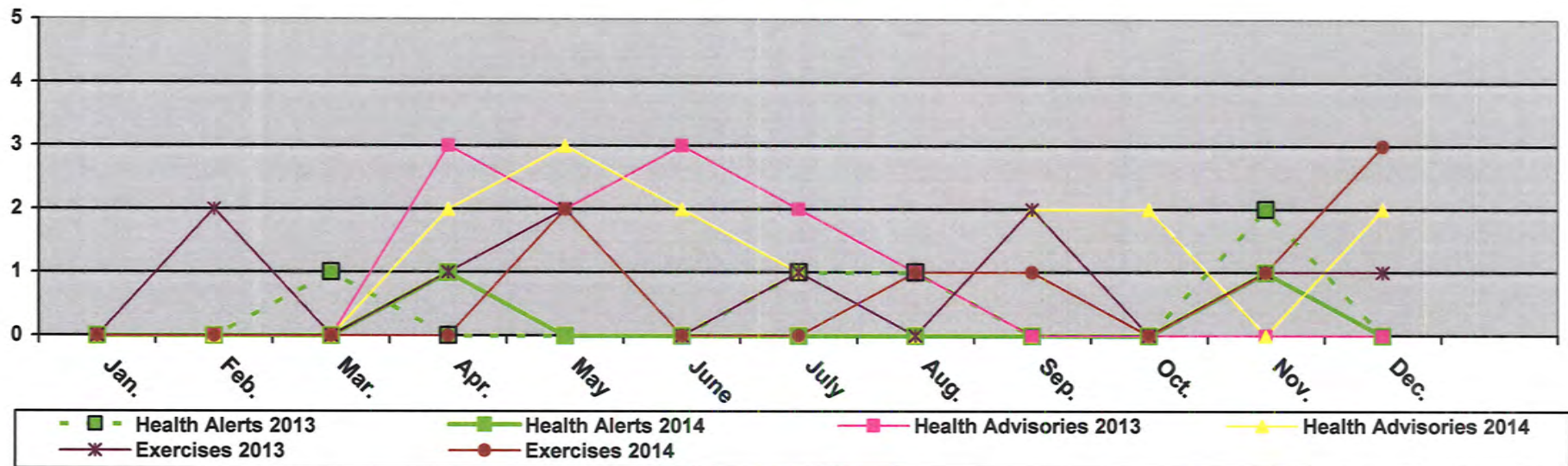
Chart 9

Includes: Lead Screenings



PREPARE FOR AND RESPOND TO DISASTERS AND ASSIST COMMUNITIES IN RECOVERY

Includes: Health Alerts / Health Advisories / Exercises



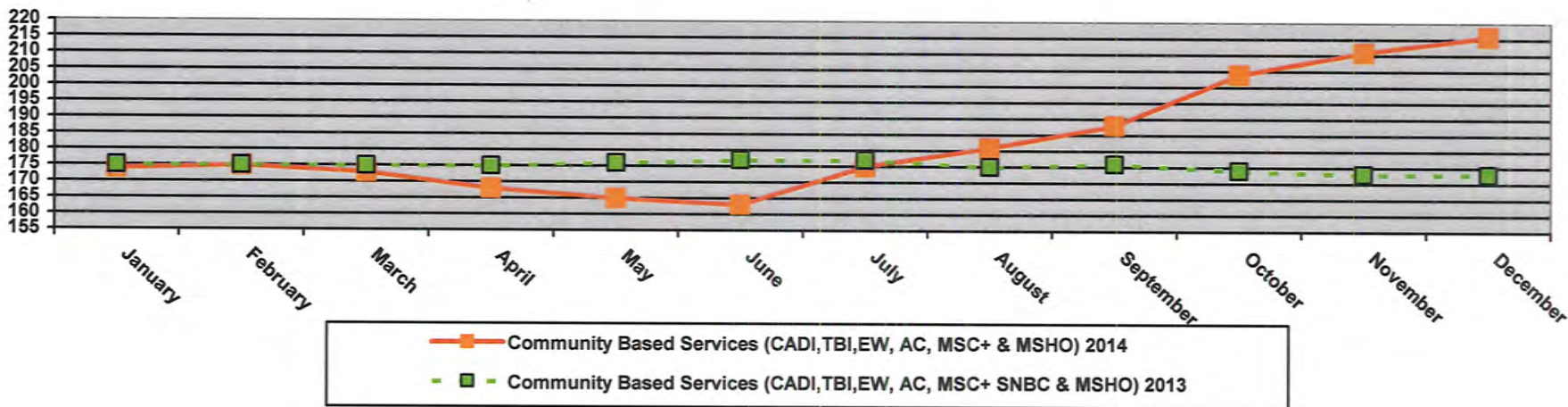
PUBLIC HEALTH STATISTICS

ASSURE THE QUALITY OF ACCESSIBLE HEALTH SERVICES

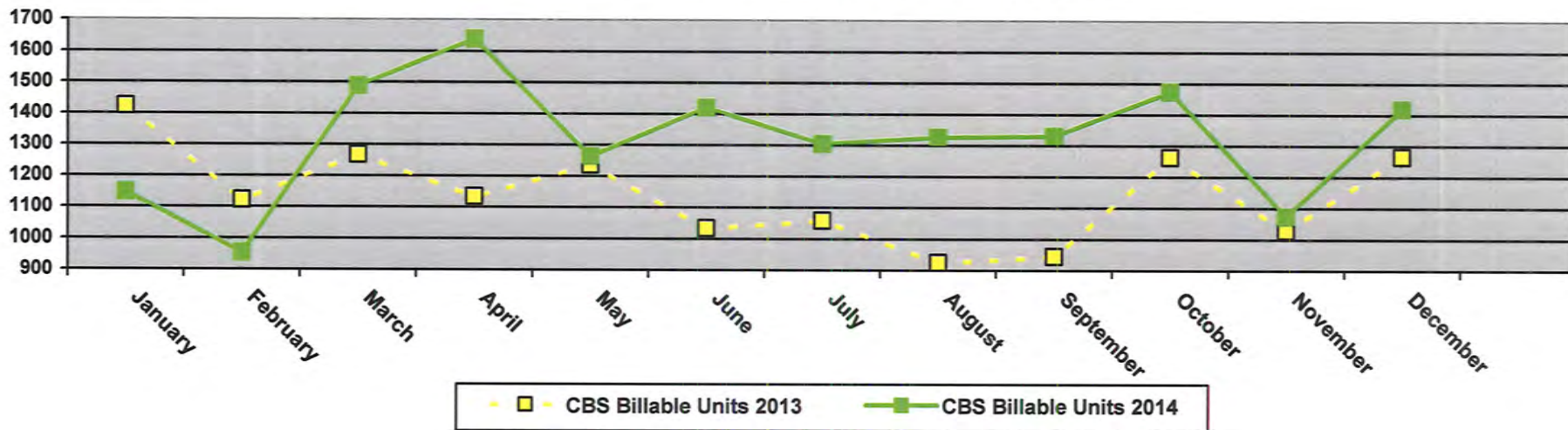
Chart 10

Community Based Services (CBS)

Includes: Community Alternative for Disabled Individuals (CADI), Traumatic Brain Injury (TBI), Elderly Waiver (EW), Alternative Care (AC), Minnesota Senior Care Plus (MSC+), Minnesota Senior Health Options (MSHO), Special Needs Basic Care (SNBC)



Community Based Services (CBS) - Billable Units



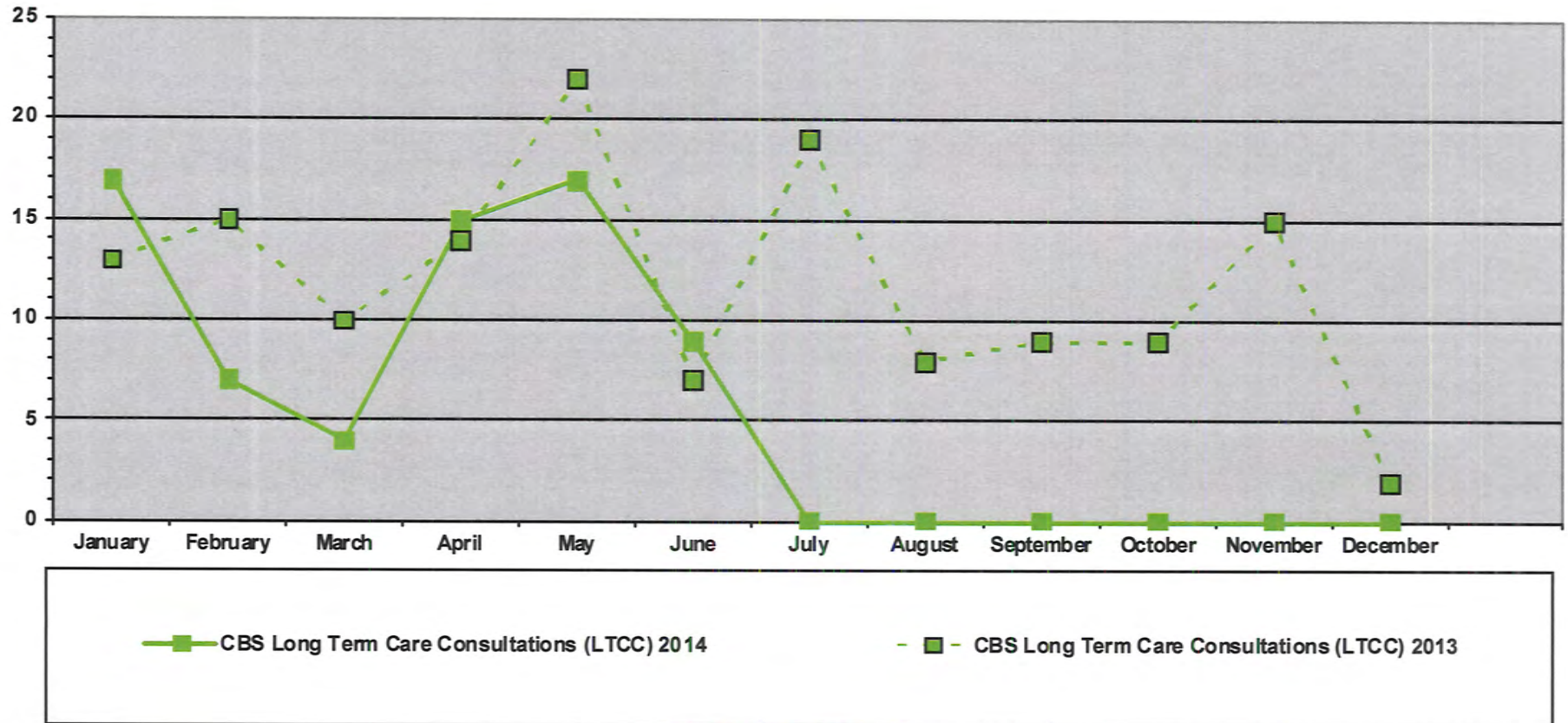
PUBLIC HEALTH STATISTICS

ASSURE THE QUALITY OF ACCESSIBLE HEALTH SERVICES

Chart 11

Community Based Services (CBS)

CBS Long Term Care Consultations (LTCC)



PUBLIC HEALTH STATISTICS

ASSURE THE QUALITY OF ACCESSIBLE HEALTH SERVICES

Chart 12

Senior Clinics

