


Aitkin County Environmental Services Planning and Zoning
209 Second Street NW
Room 100
Aitkin, MN 56431
Phone: 218-927-7342
Fax: 218-927-4372



DEC 30 2014

MEMORANDUM

DATE: December 29, 2014
TO: Aitkin County Board of Commissioners
Nathan Burkett, County Administrator
FROM: Terry Neff, Environmental Services Director 
RE: Great River Energy

Enclosed is a letter from Great River Energy regarding an open house meeting in McGregor on January 8, 2015, at 5:30pm. The open house meeting is to answer questions and provide more information regarding a proposed distribution substation and transmission line project in Shamrock Township.

Background information:

The site of the proposed electrical distribution substation is just south of Floe International. The property is zoned Residential and Shoreland (the west 60-65 feet). In 1996, Carlton County Coop Power obtained a Conditional Use Permit (CUP) for an Electrical Yard Storage Facility at the site of the proposed electrical distribution substation. Another CUP will be required for the proposed electrical distribution substation. Great River Energy has been informed of the CUP requirement.

If you have any questions, please contact me at 218-927-7342 or by e-mail at tneff@co.aitkin.mn.us.

enclosures

c:\ctybrd\ctybrd2014



GREAT RIVER
ENERGY®

12300 Elm Creek Boulevard • Maple Grove, Minnesota 55369-4718 • 763-445-5000 • Fax 763-445-5050 • greatriverenergy.com

December 19, 2014

WO# 202549
Big Sandy

Aitkin County Board
c/o Aitkin County Planning & Zoning / Environmental Services
209 2nd Street NW, Room 100
Aitkin, MN 56431

SUBJECT: Open house meeting for proposed Lake Country Power and Great River Energy distribution substation and 69 kilovolt (kV) transmission line project in the Big Sandy Lake area

Hello,

We are writing to invite you to an open house informational meeting regarding a distribution substation and transmission line project being proposed in your area by Lake Country Power and Great River Energy, power supplier to Lake Country Power and 27 other Minnesota cooperatives.

An open house meeting will be held and representatives of Great River Energy and Lake Country Power will be available to answer questions and provide you with more information regarding the proposed project. The open house meeting will be held at:

**McGregor Community Center
41442 State Highway 65
McGregor, MN
Thursday, January 8, 2015
5:30 p.m. to 7:30 p.m.**

The proposed project includes:

- Lake Country Power will construct a new electrical distribution substation (the "Big Sandy Substation") next to its service building at 21532 484th Lane; and,
- Construction by Great River Energy of approximately 3 miles of a new, single circuit 69,000 volt (69 kV) transmission line from the new Big Sandy Substation, south to Great River Energy's existing "RL" 69 kV transmission line which crosses Minnesota State Highway 65 near Goshawk Street.

Direct Dial (763) 445-5976

E-mail pschaub@grenergy.com

Fax (763) 445-6776

December 19, 2014
Page Two

The enclosed fact sheet provides additional details about the proposed project and the proposed general location of the facilities to be constructed by Lake Country Power and Great River Energy.

If you have any questions regarding this proposed project or the open house, please contact me at 763-445-5976 or email me at pschaub@greenergy.com.

Sincerely,

Great River Energy



Peter M. Schaub
Sr. Field Representative

Enclosure

PS:ve\\nertfs\shared\Transmission\Capital Projects\20339 - Big Sandy (LCP) 7 mile, 69 kV line\202549 - Big Sandy 69kV Tap Line (7 mi)\LR-ENV\Land Rights\Notification letters\Big Sandy Open House Notice ltr.docx

Big Sandy 69 kV Transmission Line & Substation



GREAT RIVER ENERGY
12300 Elm Creek Boulevard
Maple Grove, MN 55369
1-888-521-0130
www.greatriverenergy.com

GREAT RIVER ENERGY
A Touchstone Energy Cooperative



A Touchstone Energy Cooperative

LAKE COUNTRY POWER
2810 Elida Drive,
Grand Rapids, MN 55744
1-800-421-9959
www.lakecountrypower.com

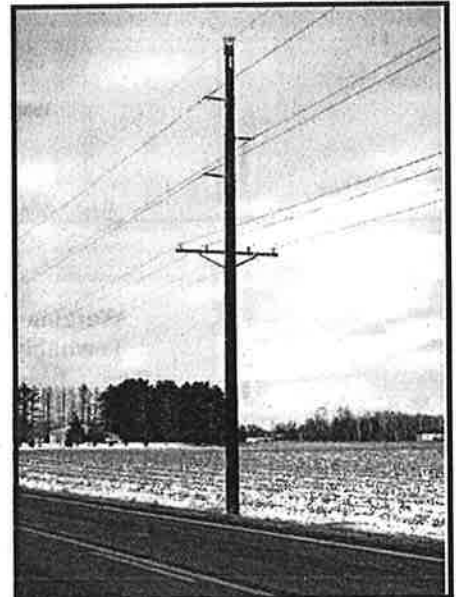
Project Need:

To avoid future low voltage issues and to maintain reliable electric service in the area, Lake Country Power proposes to construct a new electrical distribution substation (Big Sandy Substation), next to its service building at 21532 484th Lane, off of Minnesota State Highway 65. Great River Energy (GRE), whole sale power supplier to Lake Country Power and 27 other Minnesota electric cooperatives, proposes to construct an approximately 2 – 3 mile, 69,000 volt (69 kV) electric transmission line (the LC-BST line) to provide electric service to the new Big Sandy Substation.

Project Description

The LC-BST transmission line is proposed to run from the Big Sandy Substation south, primarily along MN Highway 65. The line will either follow MN Highway 65 all the way down to GRE's RL 69 kV transmission line or, will follow MN Highway 65 south to 470th Street and then west to 220th Avenue, then south again where it will move back to MN Highway 65 and connect into GRE's existing RL 69 kV line, near the intersection of MN Highway 65 and Goshawk Street (see Project Map on back). The LC-BST centerline will generally run parallel to these roads however, existing structures and other construction considerations may, in some areas, move the centerline away from roadways.

The LC-BST 69 kV transmission line will be a single circuit configuration with distribution line underbuild on some segments of the line (see example photo at right). The poles will primarily be round wood and will range in height from 60 to 80 feet above ground. The LC-BST line will require a 70-foot-wide right-of-way easement, 35 feet either side of the centerline.



*Typical 69 kV Transmission Line
With Distribution Underbuild*

Trees

Removal of trees and vegetation will be necessary for safety and maintenance purposes along the transmission line right-of-way. A representative from GRE will contact property owners before any tree work takes place to discuss easements and access to the easement area.

Project Schedule:

Project contact and/or notifications -----	Fall/Winter 2014
Permitting -----	Winter 2014/2015
Survey/Design -----	Summer 2015 - Fall 2016
Easement/Environmental permits -----	Fall 2015 - Summer 2016
Transmission line construction -----	Fall 2016 - Fall 2017
Energization -----	Fall 2017

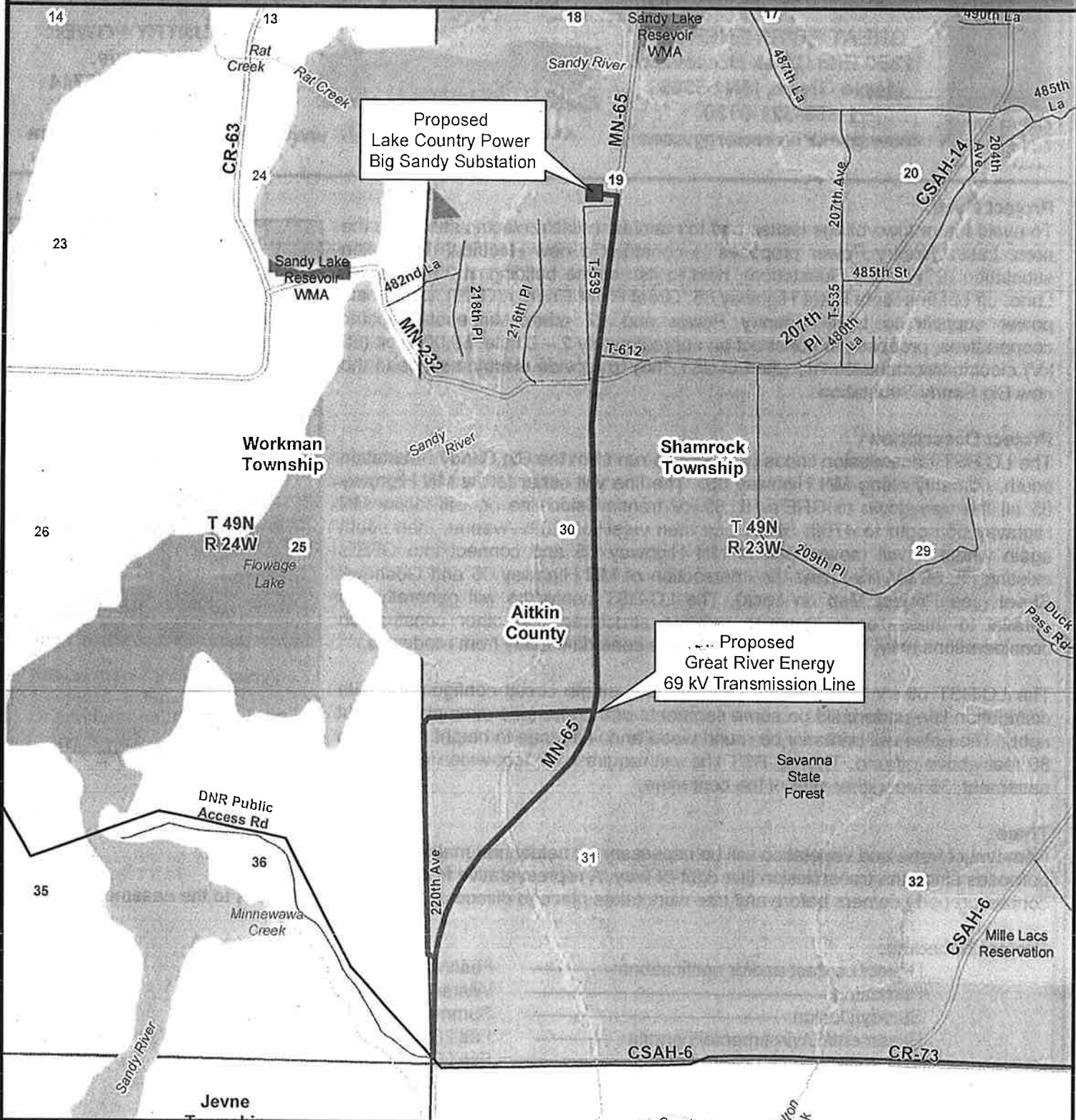
For project updates and information, visit greatriverenergy.com/BigSandy or contact:

Great River Energy
Peter Schaub
Sr. Field Representative
763-445-5976
pschaub@grenergy.com

Lake Country Power
Derek Howe
Director of Engineering
(218) 326-7178
dhowe@lakecountrypower.com

Date last revised: 12/3/2014

Proposed Project



Proposed Lake Country Power Big Sandy Substation

Proposed Great River Energy 69 kV Transmission Line

Great River Energy

- Proposed 69 kV Transmission Line Rebuild
- Existing 69 kV Transmission Line

Lake Country Power

- Proposed Distribution Substation



AITKIN COUNTY ADMINISTRATION

Aitkin County Courthouse
217 Second Street N.W. Room 130
Aitkin, MN 56431
218-927-7276
Fax: 218-927-7374

December 23, 2014

Dennise Sonne
20585 326th Avenue
Isle, MN 56342

Dear Dennise:

At the December 23, 2014 Aitkin County Board meeting, the Aitkin County Board of Commissioners appointed you to the Aitkin County Planning Commission as the District 3 representative. We thank you for your application and congratulate you on your appointment.

If you have any questions, please contact Terry Neff, Environmental Services Director at (218) 927-7342.

Sincerely,

J. Mark Wedel, Chair
Aitkin County Board of Commissioners

cc: Aitkin County Board of Commissioners
Terry Neff, Environmental Services Director

AITKIN COUNTY ADMINISTRATION

Aitkin County Courthouse
217 Second Street N.W. Room 130
Aitkin, MN 56431
218-927-7276
Fax: 218-927-7374

December 23, 2014

Michael Hagen
44211 Conifer Street
Aitkin, MN 56431

Dear Mike:

At the December 23, 2014 Aitkin County Board meeting, the Aitkin County Board of Commissioners appointed you to the Aitkin County Planning Commission as the District 2 representative. We thank you for your application and congratulate you on your appointment.

If you have any questions, please contact Terry Neff, Environmental Services Director at (218) 927-7342.

Sincerely,

J. Mark Wedel, Chair
Aitkin County Board of Commissioners

cc: Aitkin County Board of Commissioners
Terry Neff, Environmental Services Director

AITKIN COUNTY ADMINISTRATION

Aitkin County Courthouse
217 Second Street N.W. Room 130
Aitkin, MN 56431
218-927-7276
Fax: 218-927-7374

December 23, 2014

Robert Harwarth
38191 360th Street
P.O. Box 70
Aitkin, MN 56431

Dear Bob:

The Aitkin County Board of Commissioners would like to thank you for your application to the Planning Commission, however, another applicant was chosen.

Thank you for your past service and continued interest. It is very much appreciated.

Sincerely,

J. Mark Wedel, Chair
Aitkin County Board of Commissioners

cc: Aitkin County Board of Commissioners
Terry Neff, Environmental Services Director

AITKIN COUNTY ADMINISTRATION

Aitkin County Courthouse
217 Second Street N.W. Room 130
Aitkin, MN 56431
218-927-7276
Fax: 218-927-7374

December 23, 2014

Ronald Fudala
42786 322nd Lane
Aitkin, MN 56431

Dear Ronald:

The Aitkin County Board of Commissioners would like to thank you for your application to the Planning Commission, however, another applicant was chosen.

Thank you for your interest. It is very much appreciated.

Sincerely,

J. Mark Wedel, Chair
Aitkin County Board of Commissioners

cc: Aitkin County Board of Commissioners
Terry Neff, Environmental Services Director

AITKIN COUNTY ADMINISTRATION

Aitkin County Courthouse
217 Second Street N.W. Room 130
Aitkin, MN 56431
218-927-7276
Fax: 218-927-7374

December 23, 2014

Ed Spiel
31479 – 395th Place
Aitkin, MN 56431

Dear Ed:

At the December 23, 2014 Aitkin County Board meeting the Aitkin County Board of Commissioners reappointed you to the Aitkin County Board of Adjustment as the District 2 representative. Your three year term begins January 2015, and ends December 31, 2017. We thank you for your application and congratulate you on your appointment.

If you have any questions, please contact Terry Neff, Environmental Services Director at (218) 927-7342.

Sincerely,

J. Mark Wedel, Chair
Aitkin County Board of Commissioners

cc: Aitkin County Board of Commissioners
Terry Neff, Environmental Services Director

AITKIN COUNTY ADMINISTRATION

Aitkin County Courthouse
217 Second Street N.W. Room 130
Aitkin, MN 56431
218-927-7276
Fax: 218-927-7374

December 23, 2014

Jeremy Paquette
50801 237th Place
McGregor, MN 55760

Dear Jeremy:

At the December 23, 2014 Aitkin County Board meeting the Aitkin County Board of Commissioners reappointed you to the Aitkin County Board of Adjustment as the District 4 representative. Your three year term begins January 2015, and ends December 31, 2017. We thank you for your application and congratulate you on your appointment.

If you have any questions, please contact Terry Neff, Environmental Services Director at (218) 927-7342.

Sincerely,

J. Mark Wedel, Chair
Aitkin County Board of Commissioners

cc: Aitkin County Board of Commissioners
Terry Neff, Environmental Services Director

AITKIN COUNTY ADMINISTRATION

Aitkin County Courthouse
217 Second Street N.W. Room 130
Aitkin, MN 56431
218-927-7276
Fax: 218-927-7374

December 23, 2014

Mark Hodges
29578 272nd Lane
Aitkin, MN 56431

Dear Mark:

The Aitkin County Board of Commissioners would like to thank you for your applications to the Board of Adjustment and to the Planning Commission, however, other applicants were chosen.

Thank you for your interest. It is very much appreciated.

Sincerely,

J. Mark Wedel, Chair
Aitkin County Board of Commissioners

cc: Aitkin County Board of Commissioners
Terry Neff, Environmental Services Director

AITKIN COUNTY ADMINISTRATION

Aitkin County Courthouse
217 Second Street N.W. Room 130
Aitkin, MN 56431
218-927-7276
Fax: 218-927-7374

December 23, 2014

Galen Tveit
54446 U.S. Hwy 169
Palisade, MN 56469

Dear Galen:

At the December 23, 2014 Aitkin County Board meeting, the Aitkin County Board of Commissioners reappointed you to the Forest Advisory Committee as a Professional representative. This four year term begins January 2015, and ends December 31, 2018. We thank you for your application and congratulate you on your appointment!

If you have any questions, please contact Mark Jacobs, Land Commissioner, at (218) 927-7364.

Sincerely,

J. Mark Wedel, Chair
Aitkin County Board of Commissioners

cc: Aitkin County Board of Commissioners
Mark Jacobs, Land Commissioner

AITKIN COUNTY ADMINISTRATION

Aitkin County Courthouse
217 Second Street N.W. Room 130
Aitkin, MN 56431
218-927-7276
Fax: 218-927-7374

December 23, 2014

John LaHoud
50413 218th Place
McGregor, MN 55760

Dear John:

At the December 23, 2014 Aitkin County Board meeting, the Aitkin County Board of Commissioners reappointed you to the Forest Advisory Committee as the District 4 representative. This four year term begins January 2015, and ends December 31, 2018. We thank you for your application and congratulate you on your reappointment!

If you have any questions, please contact Mark Jacobs, Land Commissioner, at (218) 927-7364.

Sincerely,

J. Mark Wedel, Chair
Aitkin County Board of Commissioners

cc: Aitkin County Board of Commissioners
Mark Jacobs, Land Commissioner

AITKIN COUNTY ADMINISTRATION

Aitkin County Courthouse
217 Second Street N.W. Room 130
Aitkin, MN 56431
218-927-7276
Fax: 218-927-7374

December 23, 2014

William Neary
61942 Winding Rd.
Swatara, MN 55785

Dear William:

At the December 23, 2014 Aitkin County Board meeting, the Aitkin County Board of Commissioners reappointed you to the Forest Advisory Committee as the District 5 representative. This four year term begins January 2015, and ends December 31, 2018. We thank you for your application and congratulate you on your reappointment!

If you have any questions, please contact Mark Jacobs, Land Commissioner, at (218) 927-7364.

Sincerely,

J. Mark Wedel, Chair
Aitkin County Board of Commissioners

cc: Aitkin County Board of Commissioners
Mark Jacobs, Land Commissioner

AITKIN COUNTY ADMINISTRATION

Aitkin County Courthouse
217 Second Street N.W. Room 130
Aitkin, MN 56431
218-927-7276
Fax: 218-927-7374

December 23, 2014

Kevin Insley
403 3rd Street NW, #1
Aitkin, MN 56431

Dear Kevin:

At the December 23, 2014 Aitkin County Board meeting, the Aitkin County Board of Commissioners reappointed you to the Forest Advisory Committee as the At Large representative. This four year term begins January 2015, and ends December 31, 2018. We thank you for your application and congratulate you on your appointment!

If you have any questions, please contact Mark Jacobs, Land Commissioner, at (218) 927-7364.

Sincerely,

J. Mark Wedel, Chair
Aitkin County Board of Commissioners

cc: Aitkin County Board of Commissioners
Mark Jacobs, Land Commissioner

