



Burl W. Haar, Executive Secretary  
Public Utilities Commission



**NOTICE OF APPLICATION ACCEPTANCE AND  
PUBLIC INFORMATION MEETINGS**

*Issued: January 31, 2014*

FEB 10 2014

**In the Matter of the Application of North Dakota Pipeline Company LLC for a Pipeline Routing Permit for the Sandpiper Pipeline Project**

**Public Utilities Commission (PUC) Docket Number: PL-6668/PPL-13-474**

COUNTY	CITY	MEETING LOCATION	DATE AND TIME
Polk	Crookston	Crookston Inn & Convention Center Ballrooms 1 and 2 2200 University Avenue	Monday, March 3, 2014 6:00-9:00pm
Polk	McIntosh	McIntosh Community Center 115 Broadway Northwest	Tuesday, March 4, 2014 11:00am-2:00pm
Clearwater	Clearbrook	Clearbrook City Hall Gymnasium 200 Elm Street	Tuesday, March 4, 2014 6:00-9:00pm
Hubbard	Park Rapids	Park Rapids Armory 203 Park Avenue South	Wednesday, March 12, 2014 11:00am-2:00pm
Cass	Pine River	Pine River – Backus High School 1000 First Street North	Wednesday, March 12, 2014 6:00pm-9:00pm
Aitkin	McGregor	McGregor Community Center 41442 State Highway 65	Thursday, March 13, 2014 11:00am-2:00pm
Carlton	Carlton	Carlton County Transportation Department 1630 County Road 61	Thursday, March 13, 2014 6:00pm-9:00pm

**Bad weather?** Find out if a meeting is canceled – call (toll-free) 1-855-731-6208 or 651-201-2213 or visit [www.puc.state.mn.us](http://www.puc.state.mn.us).

**Meeting Information:**

- Citizens will have the opportunity to offer oral comments, written comments, or both into the record.
- Public Utilities Commission, Department of Commerce, and North Dakota Pipeline Company LLC (NDPC) staff will be available to answer questions about the permitting process and the project.

- Citizens who do not wish to speak may submit questions or comments in writing.
- Comments received at the meetings and during the comment period will be used to develop alternative routes for examination in the comparative environmental analysis.
- Each meeting will last until everyone at the meeting has the opportunity to speak, or until the scheduled end time, whichever comes first.
- The same information will be presented at each meeting.

#### **Topics Open for Public Comment:**

- Are there any alternative routes or route segments that should be considered?
- What human and environmental impacts should be studied in the comparative environmental analysis?
- Are there any specific methods to address these impacts that should be studied in the comparative environmental analysis?

### **Submit Comments, Alternative Routes or Route Segments**

The comment period continues after the public meetings, through **April 4, 2014 at 4:30pm.**

Any person may propose an alternative route or route segment. The proposal must:

- Be clearly identified on maps or aerial photos.
- Include an analysis of human and environmental impacts – unless mostly the same as information NDPC provided.

The Public Utilities Commission will meet to decide which route alternatives to consider as options in the comparative environmental analysis and the hearings. This decision will likely be made in May 2014.

**Submit Public Comments:** Larry Hartman, Environmental Review Manager  
 Energy Environmental Review and Analysis (EERA)  
 Minnesota Department of Commerce  
 85 7<sup>th</sup> Place East, Suite 500  
 St. Paul, MN 55101  
 Email: [larry.hartman@state.mn.us](mailto:larry.hartman@state.mn.us)  
 Fax: 651-539-0109  
 Online: <http://mn.gov/commerce/energyfacilities/#comment>

- Please include the PUC Docket Number (13-474) in all communications.

### **Project Description**

North Dakota Pipeline Company LLC (NDPC) proposes to build a crude oil pipeline:

- Approximately 612 miles long, from Tioga, North Dakota to Superior, Wisconsin

- Approximately 299 miles of the new pipeline would be located in Minnesota
- With a 24 inch diameter and a 225,000 barrels per day (bpd) capacity from North Dakota to Clearbrook, Minnesota
- With a 30 inch diameter and a 375,000 barrels per day (bpd) capacity from Clearbrook, Minnesota to Superior, Wisconsin
- With approximately 25 to 50 feet of new right-of-way and 40 to 70 feet of temporary right-of-way

The proposed project includes a new terminal facility near the existing terminal in Clearbrook, Minnesota.

The proposed project would be located in Aitkin, Carlton, Cass, Clearwater, Crow Wing, Hubbard, Polk, and Red Lake counties.

### **Process Information**

Before the project can be built, the Public Utilities Commission (Commission) must approve both a certificate of need and a pipeline route permit.

The certificate of need process determines the size, type and timing of the proposed pipeline and whether there is a better alternative for meeting North Dakota Pipeline Company LLC's stated need. The certificate of need is PUC Docket Number PL-6668/CN-13-473.

The pipeline route permit process designates the route for the pipeline and associated facilities and conditions for right-of-way preparation, construction, clean-up, and restoration. This process studies alternative routes and route segments for the pipeline.

At its January 16, 2014 meeting, the Commission determined the North Dakota Pipeline Company LLC's pipeline route permit application is complete. This means the company submitted all the information required to begin the review process. The Commission's decision-making process takes about twelve months.

The Department of Commerce will prepare a comparative environmental analysis for this project. The environmental analysis will review differences between the proposed route and alternative routes and route segments.

After the environmental analysis is completed, there will be public hearings about both the certificate of need and the route permit for this project. Citizens will have the opportunity to speak at the hearings, ask questions, and submit comments about the environmental analysis and about the project.

An Administrative Law Judge will use all the information in the record, including written comments and comments received at the public hearings, to write a report for the Commission. The report will include findings, conclusions, and recommendations about this project. After

receiving the Judge's report, the Commission will schedule a meeting to make a final decision on this project, expected by January 2015.

**Minnesota Statutes and Rules:** The pipeline route permit application is being reviewed under Minnesota Statute 216G and Minnesota Rules Chapter 7852. The certificate of need application is being reviewed under Minnesota Statute 216B and Minnesota Rules Chapter 7853. Minnesota Statutes and Rules are available at <https://www.revisor.mn.gov/>.

**Eminent Domain:** If issued a route permit by the Commission, NDPC may exercise the power of eminent domain to acquire land for this project, under Minnesota Statute 117.48.

Any new easement or right-of-way agreements reached between NDPC and landowners before a pipeline route permit is issued will not be considered in the Commission's final decision.

### How to Learn More

**Department of Commerce Project Website:**

<http://mn.gov/commerce/energyfacilities/Docket.html?Id=33599>

**Project Mailing List:** Sign up to receive notices about project milestones and opportunities to participate (comment periods, public hearings, etc.) by contacting the Public Advisor (see below).

**Full Case Record:** View all documents filed in the certificate of need (Docket 13-473) and route permit (Docket 13-474) dockets at [www.puc.state.mn.us](http://www.puc.state.mn.us), select "Search eDockets," enter the year (13) and the docket number (473 or 474), select "Search."

**Subscribe to the Docket:** Receive email notifications every time new documents are filed. Note - subscribing may result in a large number of emails.

1. [www.puc.state.mn.us](http://www.puc.state.mn.us)
2. Select green box *Subscribe to a Docket*
3. Type your e-mail address
4. For *Type of Subscription*, select *Docket Number*
5. For *Docket Number*, select 13 in the first box, type 473 or 474 in the second box
6. Select *Add to List*
7. Select *Save*

**Community Locations:** View the route permit application at the following locations in communities crossed by the proposed pipeline:

- City Clerk
- County Auditor
- Township Clerk

- **Public Libraries**
  - Aitkin Public Library, 110 1st Avenue NE, Aitkin
  - Bagley Public Library, 21 Main Avenue N, Bagley
  - Brainerd Public Library, 416 S 5th Street, Brainerd
  - Carlton Public Library, 310 Chestnut Avenue, Carlton
  - Cloquet Public Library, 320 14th Street, Cloquet
  - Crookston Public Library, 110 N Ash Street, Crookston
  - Duluth Public Library, 520 W Superior Street, Duluth
  - East Grand Forks Campbell Library, 422 4th Street NW, East Grand Forks
  - Fertile Public Library, 101 S Mill Street, Fertile
  - Fosston Public Library, 403 N Foss Avenue, Fosston
  - Gonvick Lake Agassiz Regional Library, 170 Main Street, Gonvick
  - McIntosh Public Library, 115 Broadway NW, McIntosh
  - McGregor Public Library, 111 E Center Avenue, McGregor
  - Outing Volunteer Library, 6300 Woods Bay Drive NE, Outing
  - Park Rapids Area Library, 210 W 1st Street, Park Rapids
  - Pine River Public Library, 212 Park Avenue, Pine River
  - Red Lake Falls Public Libraries, 105 Champagne Avenue SW, Red Lake Falls
  - Walker Public Library, 207 4th Street, Walker

**Available on CD:** You may contact North Dakota Pipeline Company LLC to request the certificate of need and route permit applications on CD (see below).

#### **North Dakota Pipeline Company LLC Project Information**

[www.enbridge.com/SandpiperProject](http://www.enbridge.com/SandpiperProject) or 1-855-788-7805

### Project Contacts

#### **Public Utilities Commission Public Advisor**

Tracy Smetana at [consumer.puc@state.mn.us](mailto:consumer.puc@state.mn.us), 651-296-0406 or 1-800-657-3782

#### **Public Utilities Commission Staff Analyst**

Scott Ek at [scott.ek@state.mn.us](mailto:scott.ek@state.mn.us) or 651-201-2255

#### **Department of Commerce Environmental Review Manager**

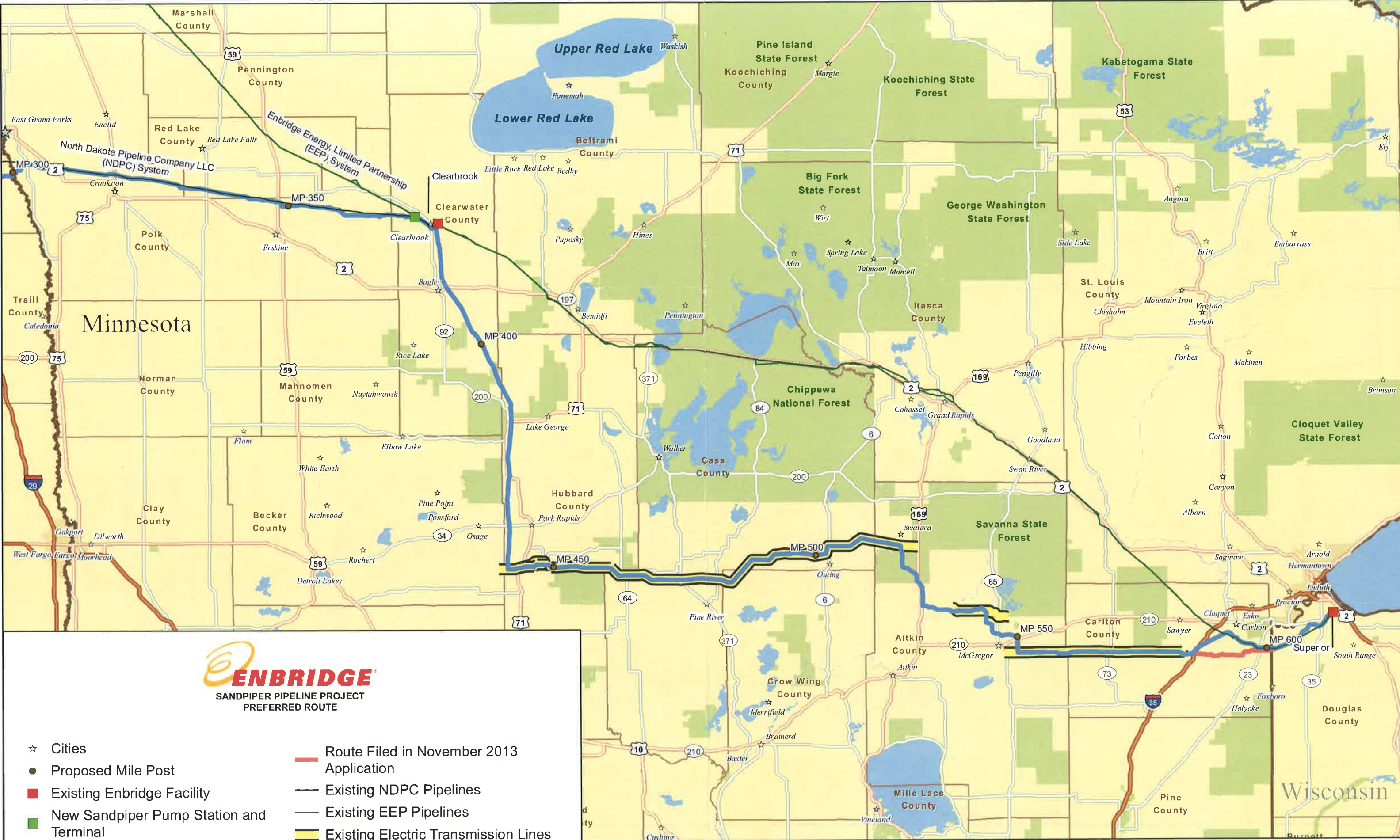
Larry Hartman at [larry.hartman@state.mn.us](mailto:larry.hartman@state.mn.us), 651-539-1839 or 1-800-657-3794

#### **North Dakota Pipeline Company LLC Project Contact**

Lorraine Little at [sandpiperproject@enbridge.com](mailto:sandpiperproject@enbridge.com) – Attention Lorraine Little or 1-855-788-7805

This document can be made available in alternative formats (e.g., large print or audio) by calling 651-296-0406 (voice). Persons with hearing or speech disabilities may call us through their preferred Telecommunications Relay Service.

If any reasonable accommodation is needed to enable you to fully participate in these public meetings (e.g. sign language, foreign language interpreter, large print materials), please contact the Commission at 651-296-0406 or 1-800-657-3782 at least one week in advance of the meeting.



- ☆ Cities
- Proposed Mile Post
- Existing Enbridge Facility
- New Sandpiper Pump Station and Terminal
- Sandpiper Pipeline Project Preferred Route
- Route Filed in November 2013 Application
- Existing NDPC Pipelines
- Existing EEP Pipelines
- Existing Electric Transmission Lines

Additional detailed project maps can be found on the project website at [www.enbridge.com/SandpiperProject](http://www.enbridge.com/SandpiperProject) or by calling the Sandpiper Project team at 855-788-7805.

**STATEMENT OF BUSINESS TRANSACTED IN  
OFFICE OF COUNTY RECORDER, AITKIN COUNTY**

DURING January 2014  
DEPOSIT OF CHECK OR CASH \$ 18,937.80 TO AITKIN CO TREASURER

NATURE OF BUSINESS TRANSACTED	AMOUNT OF FEES RECEIVED
UCC	0.00
NOTARY	40.00
NOTARY SURCHARGE <span style="float:right">Expired <del>9.2030</del></span>	8/1/2010***
TORRENS	78.00
TORRENS ASSURANCE <span style="float:right">9.2031</span>	9.00***
COUNTY GENERAL FUND	4901.00
STATE GENERAL FUND <span style="float:right">9.2036</span>	3612.00***
RECORDER TECH FEE	3440.00
UNALLOCATED	3784.00
STATE WELL CERT. <span style="float:right">9.2027</span>	467.50***
COUNTY WELL CERT	82.50
BIRTH CERTIFICATES	272.00
CHILDREN'S SURCH. <span style="float:right">9.2024</span>	93.00***
BIRTH/DEATH SURCH. <span style="float:right">9.2022</span>	416.00*** (124/292)
DEATH CERT.	272.00
2010 Leg. Surch 144.226 SUBD 3 (b)	310.00
COPIES & C/COPIES	1160.80
<b>TOTAL</b>	<b>\$18937.80</b>

**WORK DONE FOR VARIOUS COUNTY AGENCIES  
FOR WHICH NO PAYMENT WAS RECEIVED**

RECORDING HONORABLE DISCHARGES	0.00
AITKIN COUNTY	0.00
AITKIN CO ROAD & BRIDGE	46.00
OTHERS	598.00
<b>TOTAL</b>	<b>644.00</b>

AITKIN, MN January 31, 2014

*Diane M. Dafferty Co Recorder  
by Rob C. Hooper, deputy*

ZIP 344  
YEAR TO DATE 344  
PREVIOUS YEAR \$25,592.40



Burl W. Haar, Executive Secretary  
Public Utilities Commission

FEB 03 2014



## NOTICE OF PUBLIC INFORMATION AND ENVIRONMENTAL REPORT SCOPING MEETINGS

*Issued: January 15, 2014*

**In the Matter of the Application of Minnesota Power for a Certificate of Need for the Great Northern High Voltage Transmission Line Project from the Manitoba, Canada – Minnesota Border to the Blackberry Substation near Grand Rapids, Minnesota**

**Public Utilities Commission (PUC) Docket Number:** E-015/CN-12-1163  
**Office of Administrative Hearings (OAH) Docket Number:** 65-2500-31196

COUNTY	CITY	MEETING LOCATION	DATE AND TIME
Roseau	Roseau	Roseau Civic Center 121 Center Street E	Tuesday, February 11, 2014 6:00 pm
Lake of the Woods	Baudette	Baudette Ambulance Garage 111 First Avenue SW	Wednesday, February 12, 2014 6:00 pm
Koochiching	International Falls	AmericInn 1500 Hwy 71	Thursday, February 13, 2014 6:00 pm
Pennington	Thief River Falls	Ralph Engelstad Arena, Imperial Room 525 Brooks Avenue N	Tuesday, February 18, 2014 6:00 pm
Beltrami	Bemidji	The Sanford Center 1111 Event Center Drive NE	Wednesday, February 19, 2014 6:00 pm
Itasca	Grand Rapids	Sawmill Inn 2301 S Highway 169	Thursday, February 20, 2014 6:00 pm

**Bad weather?** Find out if a meeting is canceled - call (toll-free) 1-855-731-6208 or 651-201-2213 or visit [www.puc.state.mn.us](http://www.puc.state.mn.us).

### Meeting Information:

- Citizens will have the opportunity to offer oral comments, written comments, or both into the record.
- Public Utilities Commission, Department of Commerce, and Minnesota Power staff will be available to answer questions about the project and the process.
- Citizens who do not wish to speak may submit questions or comments in writing.
- Comments received at the meetings and during the comment period will help develop the scope of the environmental report.



- The same information will be presented at each meeting.

### Topics Open for Public Comment:

- Is the proposed project needed and in the public interest?
- What human and environmental impacts should be studied in the environmental report?
- Are there other ways to meet the stated need for the proposed project, instead of the proposed transmission line?

**Comment Period:** The comment period continues after the public meeting, through **March 14, 2014 at 4:30pm.**

**Submit Public Comments:** Bill Storm, Environmental Review Manager  
Minnesota Department of Commerce  
85 7<sup>th</sup> Place East, Suite 500  
St. Paul MN 55101  
Email: [bill.storm@state.mn.us](mailto:bill.storm@state.mn.us)  
Fax: 651-539-1549  
Online: <http://mn.gov/commerce/energyfacilities/#comment>

- Please include the PUC Docket Number (*E-015/CN-12-1163*) in all communications.

## Project Description

Minnesota Power proposes to:

- Build approximately 235-270 miles of 500 kilovolt (kV) transmission line from the Manitoba, Canada – Minnesota border to its Blackberry Substation in Itasca County
- Expand its Blackberry Substation

The proposed project would be located in Beltrami, Clearwater, Itasca, Kittson, Koochiching, Lake of the Woods, Marshall, Roseau, and Pennington counties.

## Process Information

Before the project can be built, the Public Utilities Commission (Commission) must approve a certificate of need and a route permit. At its December 19, 2013 meeting, the Commission determined Minnesota Power's certificate of need application is complete. This means the company submitted all the information required to begin the review process.

Minnesota Power has not yet submitted a route permit application for this project. The route permit is PUC Docket Number E-015/TL-14-21.

The Commission's decision-making process takes about twelve to fifteen months. The Commission's process is the only place where the no-build alternative and the size, type, timing, system configuration, and voltage will be considered.

The Department of Commerce Energy Environmental Review and Analysis staff will prepare an environmental report for this project. The environmental report will describe the human and environmental impacts of this project (and alternatives) and ways to address these impacts.

After the environmental report is issued, there will be public hearings. Citizens will have the opportunity to speak at the hearings, ask questions, and submit comments about the environmental report and about the project.

An Administrative Law Judge will use all the information in the record, including written comments and comments received at the public hearings, to write a report for the Commission. The report will include findings, conclusions, and recommendations about this project. After receiving the Judge's report, the Commission will schedule a meeting to make a final decision on the certificate of need for this project, expected by December 2014.

**Minnesota Statutes and Rules:** This certificate of need is being reviewed under Minnesota Statute 216B and Minnesota Rules Chapter 7849, available at <https://www.revisor.mn.gov/>.

**Eminent Domain:** If issued a route permit by the Commission, Minnesota Power may exercise the power of eminent domain to acquire land for this project.

## How to Learn More

### Department of Commerce Project Website:

<http://mn.gov/commerce/energyfacilities/Docket.html?Id=33608>

**Full Case Record:** All documents filed in this docket are available on the Commission's website at [www.puc.state.mn.us](http://www.puc.state.mn.us), select "Search eDockets," enter the year (12) and the docket number (1163), select "Search."

**Subscribe to the Docket:** Subscribe to receive e-mail notifications when new documents are filed:

1. [www.puc.state.mn.us](http://www.puc.state.mn.us)
2. Select green box *Subscribe to a Docket*
3. Type your e-mail address
4. For *Type of Subscription*, select *Docket Number*
5. For *Docket Number*, select 12 in the first box, type 1163 in the second box
6. Select *Add to List*
7. Select *Save*

**Project Mailing List:** Sign up to receive notices about project milestones and opportunities to participate (meetings, comment periods, etc.) by contacting the Public Advisor (see below).

**Public Libraries:** The certificate of need application is available at the following public libraries:

- Bagley Public Library, 21 Main Avenue N, Bagley
- Baudette Library, 110 1st Street SW, Baudette
- Blackduck Public Library, 72 1st Street SE, Blackduck
- Bovey Public Library, 402 2nd Street, Bovey
- Calumet Library, 932 Gary Street, Calumet
- Coleraine Public Library, 203 Cole Street, Coleraine
- Crookston Public Library, 110 N Ash Street, Crookston
- Duluth Public Library, 520 W Superior Street, Duluth
- Godel Memorial Library, 314 E Johnson Ave, Warren
- Grand Rapids Public Library, 140 NE 2nd Street, Grand Rapids
- Great River Regional Library, Center Street E, Clearwater
- Greenbush Public Library, PO Box 9, Greenbush
- Grygla Library, 127 N Main Avenue, Grygla
- Hallock Public Library, 163 3rd Street S, Hallock
- International Falls Public Library, 750 4th Street, International Falls
- Karlstad Public Library, 104 1st Street S, Suite 4, Karlstad
- Lake Agassiz Regional Library, 170 Main Street, Gonvick
- Marble Public Library, 302 Alice Avenue, Marble
- McIntosh Public Library, 115 Northwest Broadway, McIntosh
- Northome Public Library, 12064 Main Street, Northome
- Red Lake Falls Public Library, 105 Champagne Avenue SW, Red Lake Falls
- Roseau Public Library, 121 Center Street E, Suite 100, Roseau
- Thief River Falls Public Library, 102 First Street E, Thief River Falls
- Warroad Public Library, 202 Main Avenue NE, Warroad
- Williams Public Library, 350 Main Street, Williams

**Minnesota Power Project Information**

[www.greatnortherntransmissionline.com](http://www.greatnortherntransmissionline.com) or 1-877-657-9934

**Project Contacts**

**Public Utilities Commission Public Advisor**

Tracy Smetana at [consumer.puc@state.mn.us](mailto:consumer.puc@state.mn.us), 651-296-0406 or 1-800-657-3782

**Public Utilities Commission Staff Analyst**

Michael Kaluzniak at [mike.kaluzniak@state.mn.us](mailto:mike.kaluzniak@state.mn.us) or 651-201-2257

**Department of Commerce Environmental Review Manager**

Bill Storm at [bill.storm@state.mn.us](mailto:bill.storm@state.mn.us), 651-539-1844 or 1-800-657-3794

**Minnesota Power Project Contact**

Jim Atkinson at [jbatkinson@mnpower.com](mailto:jbatkinson@mnpower.com) or 218-355-3561

This document can be made available in alternative formats (e.g., large print or audio) by calling 651-296-0406 (voice). Persons with hearing or speech disabilities may call us through their preferred Telecommunications Relay Service.

If any reasonable accommodation is needed to enable you to fully participate in these public meetings (e.g. sign language, foreign language interpreter, large print materials), please contact the Commission at 651-296-0406 or 1-800-657-3782 at least one week in advance of the meeting.

**AITKIN COUNTY HISTORICAL SOCIETY**  
**DEPOT HIGHLIGHTS NEWSLETTER**

FEB 03 2014

**Winter 2014 – Volume 19, Issue 1**

**2013 was a great year for the Aitkin County Historical Society and Depot Museum.**

Our membership broke the 400 mark for the first time and is staying there. Our current membership is 439 and our goal for this year is to surpass the 472 mark which would be double what our total was starting in 2009 (236). Only need 33 more members by the end of the year. Consider giving a gift membership to someone who loves history.

The Annual Garage Sale set another record with sales of \$8048.00. 2009 was the first year that we broke the \$4000.00 mark. Please remember the Historical Society when you are cleaning out your garage, attic, sheds, barn or basement as a place to donate those unwanted items. Buying new furniture, replacing your old kitchen or bathroom cabinets, donate the old to the society. **Remember, that all donations are tax deductible.** Once again we will have two buildings at the County Fairgrounds. We are already taking donations for this event. Donations can be dropped off at the Depot Museum or call for us to pick your items up.

Our Annual Raffle was a huge success this year. 2012 was the first year that we had ever sold over 2000 raffle tickets (2024). In 2013 we shattered that record with sales of 3648. It helped that we had 89 prizes that were given away. Boyd Bremner collected 80 prizes, Ron Kemmett and I collected the rest. Boyd and Ron also each sold over 500 tickets. When you see them, please say thank you. On top of that, Boyd Bremner and Elaine Hallbeck sold 658 tickets during our Garage Sale. A great big **Thank You** goes out to all three of them.

This year we received 110 donations from individuals. This was not money donations, but donations of artifacts, photographs and information. One of the donations actually had 150 items, another had 54. So that 110 donations was actually a donation of close to 500 items or more. We received all of the scrapbooks, photos and history of the Aitkin Drum & Bugle core. One of the more unique items that we received was the seal for a KKK unit in Aitkin County.

One donation that was received during 2012, a Cedar Strip boat built by Arnold Westling in the 1950's, was repaired by volunteers and put on display last March. Five volunteers stripped and sanded all of the paint off of the outside of the boat, replaced the transom, seats, bumper boards and upper part of the nose, stained the wood and clear coated it. Along with the boat we have 4 Johnson Outboard motors on display. Another donation was a set of metal runners from a log sleigh. The wood was all rotted, the metal runners rusted. The runners were sanded down and new white oak boards were cut down to fit in the runners. The sleigh was rebuilt and moved over to the yard outside of the museum.

A space in the (Hodgedon/MacDonald) Butler building was made available to us for a display. We put up information about: Schools, Riverboats, Butler building, Warren William, Judy Garland, Walter Abel, Marcus Movie Theater, Logging and pioneers. This display will be up until the middle of April. The display gives visitors a small taste of what is available at the Depot Museum.

The Depot Museum hit a new high for visitors with a total of 4894. Visitors from 10 Foreign Countries, 37 US States, and 193 Minnesota communities visited during 2013. During 2012, 4610 visitors came from 3 Foreign Countries, 32 states and 145 Minnesota Communities. This year we should break the 5000 visitor mark. Now we need to encourage more local residents to visit the museum and bring visiting friends and relatives.

Seven glass display cases were donated to the museum during the past year. Five are currently being used in the Depot and the other two in the Butler building. These cases have allowed us to display items that we would not have been able to. In the Depot they currently house musical instruments and a Land-O-Lakes display.

As our membership has grown, more and more of the museum's needs have been fulfilled. Our newsletters are reaching a wider audience which creates more awareness about the museum and what we are doing. More and more businesses are stepping forward and helping us with our fundraisers and fulfilling the needs of the society. We encourage our membership to support those businesses that support us and the society tries to buy from local businesses whenever possible. It is important that we support our local businesses, because if we don't they will not survive. **SHOP LOCAL!**

We have a big year ahead of us. Numerous research projects will be worked on with the possibility of another book by the end of the year. We will print a Historical Map of Aitkin County, which we will be sharing with everyone in the County. If you have some free time to help with one of our projects, please contact me to see where you can help.

**Gregory Leach (Administrator)**

## Members Lost During 2013

### **Ray Morris**

8/30/1930 to 1/12/2013

### **Kern Ridlington**

9/25/1926 to 3/23/2013

### **Marilyn Kullhem**

7/15/1933 to 5/24/2013

### **Jerome Poland**

1/21/1938 to 9/20/2013

### **Eugene Grolla**

1925 To 12/02/2013

### **Clyde A. Ammala**

3/14/1942 to 12/26/2013

## New Members

Robert & Marjorie Wold

Mary & Gary Larson

Kathleen Buckholtz

Joan Thompson

Randy C. Wall

Kay Olson

Maxine Schroeder

Robert Zasmeta

Paula Justen

Bill & Lou Anne Berndt

Richard R. Ladd

Paul & Pam Magnuson

Kevin & Carol Hoge

David Monse

Donald Christians

John & Joyce Grimsbo

Carl A. Boberg

Julie Hansen

Bill & Sue Fox

Aitkin D.Q. Grill & Chill

## Members Lost During 2014

### **Gordon Root**

6/20/1939 to 1/24/2014

## Memberships

**Senior - \$7.50**

**Individual - \$15.00**

**Family - \$20.00**

**Business - \$30.00**

## Country Schools of Aitkin County

We are now in the process of collecting photographs and information pertaining to our Aitkin County Country schools for our next book. Do you have any information or photographs of one or more of our Country Schools? Or, do you know someone that does? Please contact the Depot Museum.

## GRANT WRITER NEEDED!

Need grants for the following:

- Purchase land under depot.
- Purchase Armory building.
- Publish Historical map of Aitkin County.
- Purchase Caboose for Depot.
- Purchase scanner for negatives.
- Promote ACHS Museum
- Research Aitkin Co. Churches.
- Research Riverboats of Aitkin

## 2013 GOALS

1. Membership over 420 members. **(Done - 434 members end of year)**
2. Complete Obituary files.
3. Visitor count surpasses 5000. **ALMOST! (4894)**
4. Raffle sales reach 2500. **ACCOMPLISHED!**
5. Garage sales surpass 6500 **ACCOMPLISHED!**
6. Increase number of displays in museum. - **DONE**
7. Lending library set up and running.
8. Clean up museum files.
9. Organize museum supply areas. - **COMPLETED!**
10. Find a Caboose.
11. More grant money to promote museum.

## BUSINESS MEMBERSHIPS

1. Cost only \$30.00 a year.
2. Businesses are listed in our quarterly newsletter for other members to support.
3. Businesses are listed on our web site with links to their web site or email.
4. ACHS uses our business members first.

## 2013 COMPLETED PROJECTS

1. Repairs of Cedar strip boat completed and placed on display in building #2
2. Wheels attached under glass cases
3. Shelf for supplies built/installed.
4. Shelf built in Military display for flag
5. Swing from porch re-stained/Painted
6. Photo album for R/R room completed
7. Thermostat moved in building #3
8. Light switches added in building #3
9. Wicker furniture repaired and painted.
10. Drawing barrel for raffle constructed
11. Prize spinning wheel constructed.
12. Outboard motor display stand built.
13. Outboard motors put on display.
14. Log cabin display in Depot doubled in size to display more artifacts.
15. Walls in Log Cabin display finished.
16. Shadow box for trains built and installed in railroad room.
17. Trains displayed on window sills, shadow box and glass cases.
18. Water sealer put on lumber wagon.
19. Aluminum paint put on deck of small railroad speeder.
20. Green bench on north side of depot repaired and painted.
21. New web site up and running. [www.aitkincohs.org](http://www.aitkincohs.org)
22. 2<sup>nd</sup> Railroad luggage wagon painted.
23. Log Cabin storms and doors sealed.
24. Six picnic tables water sealed.
25. Administrator time-line book completed.
26. **"Barns of Aitkin County" published**
27. 2<sup>nd</sup> Train shadow box built
28. Additional storage shelves for photo archives installed.
29. Display built in Butler building.
30. Log sleigh rebuilt with new lumber.
31. Black paint touched up on all artifacts and depot building.

## 2014 PROJECTS

1. Complete Obituary files.
2. Historical Map of Aitkin County.
3. Research/assemble/publish Country Schools of Aitkin County book.
4. Riverboats of Aitkin County book.
5. Adding additional information on WEB site. - **ONGOING**
6. Complete our set of AHS yearbooks.
7. Increasing membership. - **ONGOING**
8. GPS Walking Tour of the City of Aitkin.
9. Developing research facility at Depot.
10. Obtaining title to land under Depot.
11. Increasing local interest in Museum.
12. Create photo albums for each display connecting artifacts to Aitkin County.

## FOURTH QUARTER ACCESSIONS

Florence Brooten	Quilt - feed sack
Marie Tyren Peterson	1941 -AHS Yearbook
Marcella Rivers	Antique Baby Stroller
Dawn Kellen	2 - Centennial Plates
Gerald Hedberg	2 - miniture cameras
Lewann Sotnak	3 - event programs
Marie Peterson	1941 - "A" Book
Julie Lindgren	photo
Unknown	city books, many buttons, plates
Evon Peterson	photo - Pearson Homestead, book of poems
Joan Thompson	8 - Post cards of AK Sar Ben Gardens
Toby Gabrio	24" Nut Cracker
Cheryl Crawford	Vernon Boss ACR photos
Doris Nordean	R/R Thermometer
Lu Leistiko	Disc. With Info on CC Sutton and riverboats

## VOLUNTEERS NEEDED

The Aitkin County Historical Society needs help with accessioning items into the museum. Do you have a couple of hours free every week or every other week that you could volunteer? Learn how to accession items into the museum. (Photographs, paper & artifacts) We need people to learn how to accession items into the museum. Currently accession work takes place on Friday mornings. Coffee is on at 9am, visit with other volunteers and then learn how it is done. Display work is usually done on Wednesday mornings.

In April we have to remove our display in the Butler building and in May we need to take down our log cabin display in the Depot building to make room for the MHS display "Electrifying Minnesota". In June we have to set up our display in our Log Cabin for the County Fair and at the end of July we have to rebuild displays in the Depot building. This will be a very busy time of moving and building displays. Please consider giving us a hand with these projects.

Need volunteers to interview Aitkin County residents about their memories of going to Country schools. Volunteers needed for interviewing Aitkin residents about their memories of growing up in Aitkin County.

How about volunteering to staff one of our booths or help at one of our events. (Commerce & Sports show, Aitkin County fair, 6<sup>th</sup> Grade tour, Cookie walk)

Volunteers are needed to staff the front desk to welcome visitors to the museum, answer the phone, and learn how to take people on tours of the museum. Learn about all the different types of information that we keep in our files.

## 2013 RAFFLE PRIZE LIST

1. Chanhassen Dinner Theater for two donated by KKIN radio – Mary Rea - Aitkin
2. Grand Casino Mille Lacs Hotel/Buffer for two package – Pine Agency - Aitkin
3. Night stay at the Ripple River Motel – Jenny Servatius – Upsala, MN
4. 2 in 1 Smoke & Carbon Monoxide Alarm donated by Northern Air - Bob Cummings - Aitkin
5. Jeanie & Co. – Agnes Weimier - Aitkin
6. Burt's Bees Gift Basket donated by Lundberg Plumbing – Don Niemi - Aitkin
7. Metal Fondue set – donated by Hawkeyes Inc. – Roxy Wigton - Aitkin
8. Digital Thermostat donated by Gravelle Plumbing & Heating – Joe Enberg - Aitkin
9. 18" Rope STER Chain + Eagle donated by MN Gold Buyer – Deby Zarling - Aitkin
10. Digital Thermostat donated by Gravelle Plumbing & Heating – Kim Fuller - Aitkin
11. Cross Woods Golf Course – One round of golf /w shared cart – Penny Anderson - Palisade
12. Camp Lantern 20 LED donated by Mille Lacs Energy Cooperative – Rich Ritchie - Aitkin
13. Free Lube, Oil and Filter from Brandl motors – Greg Christensen - Aitkin
14. Lake Country Auto & Tire Center Oil Change – Paul Zenke - Aitkin
15. Squirrel Feeder donated by Hyytinen's Hardware - Alice Dotzler - Aitkin
16. Subscription to the Aitkin Independent Age –Lois Smedber - Aitkin
17. Cuyuna Country Auto – Full Service Oil Change – *Betty Pasell - Aitkin*
18. Roadside Restaurant – Rol Hill - Aitkin
19. Framed Eagle Print donated by Aitkin Furniture – Joyce Knowlen -
20. Birchwood Café – Steve Lehmen - Aitkin
21. Rialto Movie Theater – Lemire - Aitkin
22. \$25.00 Pre-paid VISA card donated by Security State Bank – Bonnie Swanson - Crystal
23. The Office Shop – (\$25.00 Gift Certificate) – Catherina Just
24. Players or 40 Club – (\$25.00 Gift Certificate) – Neal Thornbloom - Aitkin
25. Freedom Gas Gift Card – (\$25.00 value) – Nancy Lamke
26. Secret Hideaway framed print donated by Aitkin Rental Center – Carol Wiherski - Aitkin
27. Fall Table Runner donated by Sew Much & More – Rich Anderson - Palisade
28. Rialto Movie Theater – (\$25.00 Gift Certificate) – Pauline VanOverbike
29. Hometown Building Supply – (\$25.00 Gift Certificate) – Joe H. Voller - Aitkin
30. Simply Chic – (\$25.00 Gift Certificate) – Matt Nelson - Aitkin
31. Tea Light Centerpiece donated by Thrifty White Pharmacy – Amanda - Deerwood
32. One 8" Dairy Queen Cake from Aitkin Dairy Queen – Elaine Hill - Aitkin
33. County Market – (\$20.00 Gift Certificate) – Nancy Rosemore
34. The Beanery an Internet Café – Brian Anderson - Aitkin
35. Gift Certificate for 5 tans donated by Lorries Hair Studio – Paul Zenku - Aitkin
36. Framed Fishing print donated by Unclaimed Freight North – Nancy Jacobson - Aitkin
37. Universal Remote Control donated by Enberg TV – Matt Hill - Aitkin
38. Tall Flower Vase donated by Giada's Boutique – Kathy Sparks - Aitkin
39. County Market – (\$20.00 Gift Certificate) – Lisa Westerlund - Aitkin
40. Shakespeare Fishing set – donated by Greg Leach (\$20.00 value) – Gary Miller - Aitkin
41. ACHS Family Membership – (\$20.00 value) – Bob Zasmata - Aitkin
42. Free Hair cut at Coombs Cuts – (\$18.00 value) – Cody Hanson
43. Salon Inspire – Free Haircut – (\$18.00 value) – Donna Appel - Aitkin
44. 25 Piece Tool Kit with Flashlight – donated by RDJ Specialties – Joann Oaks - Aitkin
45. 12 Suet cakes & holder donated by Aitkin Pet & Farm Supply – LaVonne Fox - Aitkin
46. Cedarbrook Lumber Company – (\$15.00 Gift Certificate) - Marilyn Johnson - Aitkin
47. Free Large Farm Island Store Pizza – (\$15.00 value) – Greg Leach - Crosby
48. Healthy Connections – (\$15.00 Gift Certificate) – Lauren Coleman - Aitkin
49. Stars & Stripes Windsock donated by Nord Lake Reflections – Paulett Anderson
50. Whistling Wolf Mini golf – One adult + one child – Jo Paetznick - Bloomington
51. Two rounds Mini –Golf – Traditions in Deerwood – Dan Barron
52. Stereo Headset donated by Deepsystems – Woody Rian - Aitkin
53. McDonalds – (\$10.00 Gift Certificate) – Zack Marlow - Hopkins
54. Rasley Oil Co. – (\$10.00 Gift Certificate) – Dave Danielson
55. Aitkin Bowling Lanes – Sherry Arvidson - Aitkin



56. McDonalds – (\$10.00 Gift Certificate) – Laurel Larson
57. Sports bag donated by Bremer Bank – (\$10.00 value) – Irma Boerhove - Aitkin
58. Road Atlas & mug donated by Security State Ins. – (\$10.00 value) – Lu Leistiko - Aitkin
59. T-shirt – “Buffalo Trace” – (\$8.00 value) – Vanessa Brockway - Burtrum
60. Shiperio Card Game of Golf donated by Shiperio games Chanhassen – Sarah Johnson - Aitkin
61. Shiperio Card Game of Golf donated by Shiperio games Chanhassen – Kathy Sparks - Aitkin
62. John Deere Baseball Cap donated by Northland Equipment – Sonja Hakes - Aitkin
63. John Deere Baseball Cap donated by Northland Equipment – Susan Gamble - Aitkin
64. John Deere Baseball Cap donated by Northland Equipment – Billie Forst
65. Aitkin County Naturally – (\$5.00 value) – Casey Ek – No. St. Paul
66. Rand McNally 2013 Road Atlas – Nathaniel Zahn-Snyder - Aitkin
67. Rand McNally 2013 Road Atlas – Don McKay - Aitkin
68. Rand McNally 2013 Road Atlas – Sonja Hakes - Aitkin

### **GOALS FOR 2014**

1. Membership surpasses 472
2. Raffle over \$3000.00 again
3. Garage Sale over \$7000.00
4. Publish book about our Aitkin County Country schools.
5. Visitor count over 5000.
6. Research facility set up.
7. Find a Caboose or railroad car for display.
8. Publish Historic map of Aitkin County,
9. Publish GPS walking tour of the City of Aitkin.
10. Find additional funding for the Depot Museum.
11. Add another museum sign south of Aitkin on Hwy 169.
12. Lending Library set up and running.
13. Find additional grant funding.
14. Update Past Perfect Software.

### **2014 GARAGE SALE**

We have already started to collect sellable items for this year's garage sale. Items that are not accepted are: hide-a-beds, computers & accessories, T.V.'s, large appliances or clothes. Items will be marked during May, June & July. We are looking for tools, furniture, books, movies, games, glassware, holiday decorations, household items, jewelry, fishing items, hunting items, toys, etc. On Tuesday after the Aitkin County Fair we will set up tables in the buildings and on Wednesday all of the merchandise will be moved to the Fairgrounds. All merchandise will then be sorted and checked for pricing. The sale will take place on August 1<sup>st</sup> (9am to 4pm) & August 2<sup>nd</sup> (9am to 3pm) which is half price day. **All items donated are tax deductible.**

### **2014 RAFFLE**

We will start to collect raffle prizes for this year's raffle in April of this year. Last year we collected 89 prizes for our raffle which led to our best raffle in the history of ACHS. Let's make this year's raffle even better.

### **IDEAS NEEDED**

We need ideas for new fundraisers to help fund the Depot museum. If you have an idea for a new fundraiser, please contact Greg at the museum, and share that idea with him.

## **Aitkin Chamber Commerce and Sports Show**

**March 8<sup>th</sup> & 9<sup>th</sup> at the Aitkin High School**

The Aitkin County Historical Society will once again have a table at the show. This year we will sell copies of our book “Barns of Aitkin County, Minnesota.” Also information about membership and the museum will be made available to the public. We will need volunteers to staff our table. A signup sheet is available at the Depot Museum. March 8<sup>th</sup> the hours are 10am to 4pm and on March 9<sup>th</sup> the hours are 10am to 3pm. On Saturday we will need 6 people to work a two hour shift (2 per shift) and on Sunday we will need 4 people to work two and a half hour shifts. Our booth will need to be set up on Friday March 7<sup>th</sup> and taken down on Sunday March 9<sup>th</sup>. Come early and walk around the event, work a shift and then go home or work a shift, have some lunch, look around the show and then go home. This is a fun event to attend during the final gasps of winter. Visit with your friends and neighbors who are in another booth or attending the event. It is also a good time to find deals on some of those spring projects around the house.

# MUSEUM VISITORS

	<u>2011</u>	<u>2012</u>	<u>2013</u>
January	40	40	86
February	22	55	29
March	23	187	99
April	48	153	48
May	50	100	110
6th Graders	101	91	91
June	472	183	127
July	266	356	251
County Fair	1171	0	1500
August	214	202	248
Garage Sale	0	1814	1723
September	128	118	132
Rendezvous	0	1077	0
October	75	72	102
November	93	41	150
Open House	83	71	66
<u>December</u>	<u>48</u>	<u>50</u>	<u>132</u>
	<b>2834</b>	<b>4610</b>	<b>4894</b>

## Jeannette Marie Silverberg

The Aitkin County Historical Society was named in her Last Will & Testament and will receive 5% of her Estate. Although, not as much as we were first told, the money will give us an opportunity to make some needed changes to the museum. It was very thoughtful of her to have included us to receive a part of her Estate.

## What is your legacy?

Have you set aside part of your Estate to the Historical Society or your favorite Charity? It's time to figure out what will happen to your estate when you are gone. Maybe, it is not money, but a certain artifact that tells a part of our Aitkin County History. Or, maybe it is information about Aitkin's past. If you wish that certain items should go to the Historical Society or some other organization please let your Heirs know.

## THE FOLLOWING COMES FROM OUR AITKIN COUNTY HERITAGE BOOK

### AITKIN COUNTY SCHOOLS

In the autumn of 1832 at the urgent request of the trader, Mr. Aitkin, Rev. Ayers, a Presbyterian Missionary came to Sandy Lake and opened a school for the children of the voyagers and Indians. This was the first school in Aitkin County and is said to be the first in Minnesota.

Rev. Ayers and other missionaries who were interested in the "Three R's" were also interested in the spiritual welfare of the people. They also felt these people had to learn to be good farmers and home builders. Several spots in the Sandy Lake area show evidence of having been farmed in those early days.

The missionaries found that in order to teach the voyagers and Indians, they first had to learn their language and in turn teach them English. Mr. Ayers completed an Ojibwa spelling book. In 1833 Mr. E.F. Ely became the teacher of the Sandy Lake School. The first school consisted of a large room in Mr. Aitkin's home, which served as both classroom and lodging room. He started the school with 6-8 scholars and in a short time had 15. Thus started the school system in Aitkin County.

School District #1 was organized February 13, 1873, and included the whole county. This school as well as most of the schools to come started in a home. After a couple of years a log school would be built, then a large school. Aitkin started with the first school being built by some of the men in town, resulting in no cost to the school district. Two more schools were built and then in 1901 the large school was built with two sections added later. In 1929 the high school was added, including an auditorium and gymnasium. Most of this was torn down when the present school building was constructed. Rippleside Elementary was built in 1957.

In 1887 there were several schools started throughout the county, and in time each township had one to five schools depending on the population of the township.

It is difficult to research all the rural schools that existed in Aitkin County. Many schools in the McGrath area had already closed in 1916 when they consolidated to form the bigger school in the village of McGrath. It is estimated that at least six schools closed at that time.

In the Hill City area, where several schools along the railroads, were closed when the logging came to an end and the railroads were no longer needed. Many of the little towns along the railroad became ghost towns and the settlers had to move on to find more logging or stayed to farm. By the early 50's many schools had to consolidate with the towns in their area: Hill City, Palisade, McGrath, McGregor, Aitkin, some of the southern schools with Isle, Mora, Finlayson and Pine County districts.

Most of the school pictures in this book were taken from a collection of pictures donated to the Aitkin County Historical Society by former Aitkin County Superintendent of Schools, Wally Newstrom, which he had taken during the 1940's. We are aware that there were at least 40 to 50 more schools that we were unable to get pictures or related information on.

It is our wish that you enjoy the information and pictures bringing back memories of days gone by. *Research and stories by Myrl Curtis.*

#### **BALL BLUFF SCHOOL - DISTRICT #34**

The Ball Bluff School (1920-1939) also known as the River Road School was located about four miles south of Highway 34 (200) in section 28 of Ball Bluff Township. This school also had a round entry and it is believed that it along with one of the Jacobson schools were both built by Louis Johnson of Aitkin.

#### **CEDAR BROOK SCHOOL – DISTRICT #15**

Cedar Brook School (1895-1949) was located northwest of the city of Aitkin in Aitkin Township by the former Frank Johnson place. The original building burnt and the district bonded and a new one was built by contractor, John Koenig. This school building is presently located at the Aitkin Athletic field and used for early childhood development.

#### **CEDAR LAKE SCHOOL – DISTRICT #68**

John Swing opened his front room for a school, the first building was built about 1903 on the northwest corner of Clear Lake on land donated by John Swing. Della Johnson was the first teacher and Mayme Geyer was the last. The new school building was built about 1943 and consolidated with Aitkin in 1952. Sunnyside School was moved from Malmo and formed a second room. Pupils came from Swamp, Glory, Isle of Pine, Malmo, Sunnyside, and Rabbit Lake to attend the Clear Lake Center. They now had electricity, hot lunch, two busses and a janitor. The school was closed in 1967 and all pupils went to Aitkin.

#### **CUTLER SCHOOL – DISTRICT #90**

The Cutler School was in session from approximately 1907 to 1957. In the early years a Mr. and Mrs. Finch were teachers, he at Nichols and Mrs. at Cutler, later exchanging schools. The Nichols school was located near Mille Lacs Lake with no other information available. Possibly it had the same district number as Cutler. The Cutler school is presently a private home.

#### **HASSMAN SCHOOL – DISTRICT #56**

The Hassman school was formed in 1902 and the one room school opened in 1905. Lucian Chale gave the land for the school building. It consolidated with Independent District #1 in 1963. As most schools of that time the students walked two or three miles and often had frost bite. During winter recess the girls played jacks and the boys marbles. In warmer weather the girls jumped rope or joined the boys playing ball or pump pump pull away.

#### **JACKSON SCHOOL – DISTRICT #48**

The Jackson School was in session before 1910, located in Logan Township. When it burned, (about 1930) the Raalon School was moved to the site on a sled especially built to cross the Willow River. The school consolidated in 1949 with Palisade with Ernest Tyren as bus driver, 1953 the building was moved to Palisade for an annex. It was later sold to Mt. Olive Lutheran Church.

Greetings,

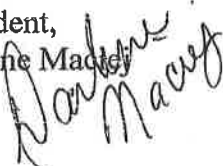
The holiday seasons are over and the book "Barns of Aitkin County" was well received. I received calls from several after purchasing one of the barn books asking for another. One gentleman looked at the book and stated, "My barn is in here." He was surprised because his barn collapsed two years ago. Photos of barns that were standing years ago and are now vanished were requested. The book with Greg and Laura Thornbloom's design and layout was done exceptional well. Thanks to Greg and Laura for all the hard work they put into getting the book completed for publishing. Over 800 photos were collected and several did have life history attached to the barn.

I am excited about the next project about collecting information on the schools in Aitkin County. I spoke with Larry Schoenrock and he had documents on five (5) of the early schools in Wagner Township. There are so many from the early 1900's with children expected to walk two miles or less to school. Now-a-days it is a walk to the bus. Any information in regards to these early schools will be collected at the office of the Aitkin County Historical Society or McGrath Historical Committee. The Society is also collecting information on Riverboats and churches in the county.

The topic of preserving historical items came up and one of the ways of preserving clothing is to use padded hangers. Attached is a sheet on how to make the padded hangers. There are so many different ways that help with preserving our history. Humidity, acid paper or not, photos without tape or glue are a few of the concerns that have been questioned. We will have to extend on the topic of preserving older items.

Recently I did some reading about the Townships in the southern part of Aitkin and came across information stating that in the early years there was a post office called the Boston Post Office. It was located in Seavey Township from 1899-1904. In 1904 it became Seavey and was discontinued in 1938.

President,  
Darlene MacGregor



**Board of Directors:** Darlene Maciej (President), Cheryl Meld (Vice-President), Colleen Bremner (Secretary), Alice Dotzler, Connie Pettersen, Arlene McNevin, Susan Benson, Carol Bailey, Ron Kemmett, John Hendrickson, Bob Lake, Lorraine Liljenquest, Mark Wedel (County Commissioner), Sherry Arvidson (Accountant), Greg Leach (Administrator)

**AITKIN COUNTY HISTORICAL SOCIETY MEMBERSHIP**

Business Members – 34, Individual Members – 28, Senior Members – 104, Family Members – 255,  
Life Members – 16, Perpetuity Members – 2

**TOTAL MEMBERSHIP – 439**

**BUSINESS MEMBERS**

Aicota Health Care Center  
Aitkin Body Shop  
Aitkin Chamber of Commerce  
Aitkin County Abstract Company  
Aitkin Family Chiropractic Center  
Aitkin Flowers & Gifts  
Aitkin Furniture & Carpet  
Aitkin Independent Age  
Aitkin Iron Works  
Aitkin Lodge #164 IOOF  
Aitkin Motor Company  
American Legion Post 86  
Arvidson Tax & Accounting  
Bremer Bank  
Crosby Eye Clinic  
D.Q. Grill & Chill  
Enberg TV  
Eyecare Center of Aitkin & McGregor  
Garrison Disposal  
Gobles Sewer Service  
Gravelle Plumbing & Heating  
Hasskamp Brox. Well Drilling  
Hudrlik  
Jim Blakesley Enterprizes  
K & J C-Stores, Inc.  
KKIN-KEZZ Radio  
Lundberg Plumbing & Heating  
Members Coop Credit Union  
Mille Lacs Energy Cooperative  
Paulbecks County Market  
Peoples National Bank  
R & K Cabinets  
Security State Bank  
Sunset Bav Resort

**SUPPORTING BUSINESSES**

Aitkin Bowling Lanes  
Aitkin Dairy Queen  
Aitkin EZ Stop  
Aitkin Flowers & Gifts  
Aitkin Furniture  
Aitkin Glass  
Aitkin Independent Age  
Aitkin McDonalds  
Aitkin Pet & Farm  
Aitkin Rental  
Bare's Bootery  
Bill's Sportsmans Service  
Birchwood Cafe  
Brandl Motors  
Bremer Bank  
Cedarbrook Lumber  
Coombs Cuts  
Cross Woods Golf Course  
Cuyuna County Auto  
Cuyuna Lanes  
Cycle, Path & Paddle  
Deep Systems  
Duane's Photography  
Emily Greens Golf Course  
Enberg TV  
Farm Island Repair & Marine  
Farm Island Store  
40 Club/Players  
Freedom Gas Station  
Garrison Disposal  
Grand Casino Mille Lacs  
Gravelle Plumbing & Heating  
Grandmas Pantry

**SUPPORTING BUSINESSES**

Hawkeyes Inc.  
Healthy Connections  
Hometown Building Supply  
Hot Stuff Foods  
Hyytinen Hardware  
KKIN AM & FM Radio  
Lake Country Auto & Tire Center  
Lightning Motorsports  
Lorries Hair Studio  
Lundberg Plumbing  
Mille Lacs Energy  
MN Gold Buyers  
Nordlake Reflections  
Northern Air Heating & Plumbing  
Northwood Equipment  
The Office Shop  
Paulbecks County Market  
Rasley Oil  
RDJ Products  
Rialto Movie Theater  
Ripple River Motel  
Roadside Restaurant  
Salon Inspire  
Security State Bank  
Security State Insurance  
Sew Much & More  
Shiperio Games  
Shirts Plus  
Simply Chic  
Tire Barn  
Traditions Mini Golf  
Unclaimed Freight North  
Whistling Wolf Mini Golf

**SUPPORTING TOWNSHIPS**

**FARM ISLAND TOWNSHIP  
IDUN TOWNSHIP  
LAKESIDE TOWNSHIP  
CLARK TOWNSHIP  
NORDLAND TOWNSHIP  
AITKIN COUNTY**

**Model Trains Needed**

We have two cases in our Railroad room for displaying model trains. Currently we have 14 trains on display and need 10 more to fill up the display. Do you have a train set that you would be willing to donate to the museum? Or maybe a train set that you would be willing to loan to the museum for this display. We have trains of all gauges on display. (HO, N, O, etc.)

**Volunteer**

Your time  
Your memories  
**Donate**  
Artifacts  
Information  
Family Histories  
Photographs  
Money



1920 Aitkin Public Library

**AITKIN COUNTY HISTORICAL SOCIETY**  
20 Pacific Street S.W. / P.O. Box 215  
Aitkin, MN 56431

We are located just 2 blocks south of the stoplights in downtown Aitkin, south of the railroad tracks and west of highway 169.

Phone: 218-927-3348

Email: [achs3348@embarqmail.com](mailto:achs3348@embarqmail.com)

Web Site: [www.aitkincohs.org](http://www.aitkincohs.org)



**Aitkin County  
Board of Commissioners**  
209 2<sup>nd</sup> Street N.W.  
Aitkin, MN 56431

56431-1269 0002



## CALENDAR OF EVENTS 2014

### Aitkin Commerce & Sports Show

March 8<sup>th</sup> & 9<sup>th</sup>

We will be selling our new book "Barns of Aitkin County, Minnesota at this event. Volunteer to sit in our booth for a couple of hours.

### Sixth Grade Tours

May 7, 2014

Sixth graders are invited to visit the museum and learn about the history of Aitkin County and what the museum has to offer.

### County Fair

July 9<sup>th</sup> - 12<sup>th</sup>

Come and visit our log building during the fair. Wed. 12 - 8pm, Thurs 10am - 8pm, Friday 10am - 8pm and Saturday 10am - 6pm.

Volunteer to sit at our building and welcome guests. Call the depot for more information.

## JOIN ACHS TODAY!!

### MUSEUM HOURS

#### June thru August

Tuesday, Wednesday, Friday &  
Saturday 10am to 4pm

#### September thru May

Wednesday, Friday & Saturday  
10am to 4pm

THE PRESERVATION OF  
OUR HERITAGE  
DEPENDS ON YOU

**Editor: GREGORY LEACH**



Board  
copy  
Re: Unorg 48.27

City of Aitkin

109 First Avenue NW • Aitkin, MN 56431  
218/927-2527 • Fax 218/927-1834  
www.ci.aitkin.mn.us

February 4, 2014

Township Officials:

The City Council held the annual Fire Department meeting with Township representatives on Tuesday, January 21, 2014. Enclosed please find a copy of the minutes of that meeting, along with a set of handouts. Please note, the handouts have been adjusted after some discrepancies were pointed out to the Fire Chief at the annual meeting. These new handouts have been adjusted accordingly. Also enclosed is a copy of your Township's Agreement for Fire Service (as requested).

If you were not present at the annual meeting, please note that there was discussion about how to allocate the Fire Department budget going forward. Much information was provided, as you can see, to try and help everyone come to consensus. This additional information was asked for by township representatives last year. Neither the Fire Department nor the City Council are lobbying for changes – but are only interested in providing options for discussion and/or consideration as requested.

As you know, the figures that have been used to determine each Township's allocation are market value and the previous three years of manhours. Information is provided using market value along with three years of manhours, five years of manhours, seven years of manhours, or no manhours at all. Information is also provided with no manhours and the City agreeing to cover 25% of the Fire Department budget. The remaining 75% would be split among the Townships according to market value.

The City Council ended the January 21<sup>st</sup> meeting by asking Township representatives to take this information back to the February Township meetings for discussion and to let me (the City Clerk) know how your Township would like to proceed. The City Council plans to discuss this further at the February 18<sup>th</sup> Council Meeting. You, as always, are invited to attend this meeting, as well as any open City Council meeting. It may be too late to make any changes for the 2015 allocation, since most Townships will be holding their annual meetings in March; therefore, if a change is desired, it is not likely to occur until the 2016 allocation.

Please share this information with your township supervisors. If you should have any questions, please don't hesitate to contact me.

Sincerely,

*Kathy Brophy*  
Kathy Brophy  
City Clerk

Enclosures

cc Aitkin City Council  
Brian Pisarek, Fire Chief

SPECIAL COUNCIL MEETING  
COUNCIL CHAMBERS

January 21, 2014

6:00 p.m.

MEMBERS PRESENT: Mayor Gary Tibbitts; Council Members Julie Miller, Keith Nentl, Trevor Betley, Cori Welshons; City Clerk Kathy Brophy

MEMBERS ABSENT: None

ALSO PRESENT: Brian Pisarek, Mark Larson, Terry Betley, Robert Harwarth, Paul White, Karen Hillman, Ruth Nelson, Bill Pratt, Erin Melz, Pam Landgren, Roger Pearson, Gerald Wickham, Gary Osiecki, Jerry Wolters, Jeff Coombs, Tim Woodrow, Dan Bobseen, Seth Jacobs, Jeanne Schram, Tim Just, Bill Dotzler, Larry Robberstad, Charlie Christensen, Brian Pearson, Pete Gansen, Dan Jones, Tom Veenker, Gary Finlayson, Kevin Stromberg, Brad Irwin, Arlene Westerlund, Cheri Johnson

1. Call to Order. The meeting was called to order by Mayor Tibbitts at 6:00 p.m.
2. Annual Meeting with Township Officials – Aitkin Fire Department. The purpose of the Special Council Meeting was for the Council and Fire Department to meet with Township Officials. Fire Chief Brian Pisarek gave an overview of the Department activities in 2013, stating that they had 78 calls. He reviewed the various types of calls. On average, Pisarek stated, 19 firefighters were available to respond to each call. He reported that one firefighter moved out of the area in 2013; therefore, they have 28 active members at this time. They will be looking to replace that firefighter so that they have 29 active members. Pisarek reported that 90% of the firefighters are State certified at the Fire Fighter 2 level, and 50% have completed Fire Instructor Training.

In 2013, Pisarek stated, the extrication tool was replaced at a cost of approximately \$18,000. Some old parts were retrofitted and reused, some were sold. Water handling equipment was upgraded in 2013. This includes new hoses, heated lines, and nozzles. Also, in 2013, the Department has been promoting the Knox Box, which is a lock box that property owners install on the outside of their buildings and place a set of keys to the building inside it. The Fire Department then has keys to the Knox Box and is able to access the building if they are called out to the property. This cuts down on having to break down doors or windows to gain access. Pisarek reviewed the budget versus actual figures for 2013.

Pisarek reviewed the fund balance in the Fire Department fund. Currently, the unaudited balance at December 31, 2013 is \$522,634. He noted that this accumulation has occurred over the past ten years. He provided a breakdown of the equipment replacement schedule and noted that the Department is about 70% funded taking into account the specified replacement needs. However, he stated, not all of the replacement needs are included on the schedule at this time. The Department is able to supplement the budget with reimbursements from the State for wildland fires, and also from their charitable gambling operation. They also try to stretch out the life of certain pieces of equipment. In 2014, the turnout gear is due to be replaced. FEMA grant funds have been applied for. Masks will likely be replaced in 2015; hopefully with a FEMA grant as well.

Pisarek stated that in 2014 the Department is planning to replace Truck #9, which is a 1989 two-person cab pumper; and Truck #7, which is a 1991 rescue truck. The Department is planning to combine the functions of both vehicles into one new vehicle. This will save on maintenance, tires, storage, etc. The estimate for a new truck is \$380,000. They plan to go through a cooperative purchasing program for this apparatus. They will make a cash down payment on this vehicle, and then enter into a lease-to-purchase arrangement. When asked if there is a market for the old retired



vehicles, Pisarek stated that the Department did receive about \$10,000 for the old ladder truck and maybe \$5,000 for old #6. He stated there is interest in Truck #7; however, Truck #9 is a pumper truck, which generally only has a 25 year life span. The Department will try to get whatever they can for these vehicles when it comes time to sell them.

Discussion then turned to the proposed 2015 Fire Department Budget. The City Council has approved a 2% increase in the budget. Pisarek reviewed the past history of budget increases, noting that there has been no increase in the past four years. The 2014 budget is \$242,800. The 2015 proposed budget is \$247,300. Pisarek then discussed the use of manhours in the allocation formula. Currently, and in the past, the previous three years of manhours have been used. Township officials were provided information going back to 2009 showing what their portion of the Fire Department budget was based on three years of manhours, and showing what it would have been if it was based on five years, seven years, or no manhours at all. Information was also provided showing what each Township's bill would be for 2015 if the City agreed to cover 25% of the budget, and no manhours were used in the formula. Last year, Township officials had asked for this additional information so that they could determine if they would like to make a change in the formula. Pisarek stated that the City is looking for input or a proposal from the Townships.

Some of the comments made about the manhour discussion included:

- The use of manhours is important so that Townships are paying for what they use.
- Using seven years of manhours provides less fluctuation from year to year.
- Traffic accidents are not included in the manhour totals.
- No manhours, with the City agreeing to 25% of the Fire Department budget, would be more stable for budgeting purposes.
- Not comfortable eliminating the use of manhours.
- If the City agreed to more than 25% of the Fire Department budget, that would be better.

It was noted that the City Council will ultimately have to decide on the formula; however, Township input is desired. Township representatives were asked to take all of the information provided tonight to their February Township meetings and let the City Clerk know how their Township would like to proceed. The Council will then make a decision at the February 18<sup>th</sup> Council Meeting.

Township representatives were then invited back to the Fire Hall for refreshments and to follow up on additional questions.

3. Adjournment. A motion to adjourn was made by Nentl, seconded by Betley. All aye. Time 7:00 p.m.

---

Mayor

---

City Clerk

Unorganized 48-27 Township  
**\*\*\* REVISED AFTER ANNUAL MEETING w/TOWNSHIPS ON JANUARY 21, 2014 \*\*\***

	2009	2010	2011	2012	2013	2014	2015
Fire Dept Budget	232,400	238,300	242,800	242,800	242,800	242,800	247,300
Net Tax Capacity	.7%	.7%	.7%	.7%	.8%	.8%	.8%
	66,198	80,649	93,700	105,033	103,092	98,375	96,178
Township Portion							
No Manhours	1,627	1,668	1,700	1,700	1,942	1,942	1,978
3-years of MH	1,394	953	971	971	2,185	2,185	2,473
5 years of MH	1,162	1,430	1,457	971	1,700	1,700	1,855
7 years of MH	1,394	1,430	1,214	1,214	1,700	1,457	1,607
City 25%/Towns 75%							1,669

NOTE: The 3-years of Manhours is the figure that has been used in prior years.

ALLOCATION OPTIONS FOR DISCUSSION – 2015 BUDGET

\*\*\* REVISED AFTER ANNUAL MEETING w/TOWNSHIPS ON JANUARY 21, 2014 \*\*\*

AREA	3-year MH 2011-2013 w/MV	5-year MH 2009-2013 w/MV	7-year MH 2007-2013 w/MV	No MH MV only	City 25% Townships 75% No MH
City of Aitkin	54,406	56,506	60,712	26,955	61,826
Aitkin Township	22,752	23,123	21,144	22,999	19,475
Farm Island Township	45,256	42,536	43,648	59,105	49,707
Glen Township	27,450	23,741	22,010	24,483	20,773
Hazelton Township	14,467	12,365	12,489	14,838	12,427
Kimberly Township	4,451	3,710	3,957	3,462	2,968
Malmo Township	11,252	12,736	13,602	14,591	12,241
Morrison Township	5,812	5,688	5,812	4,699	3,895
Nordland Township	30,171	27,327	27,821	36,600	30,789
Spencer Township	11,623	15,580	14,714	11,129	9,459
Wealthwood Township	1,731	3,462	2,844	2,968	2,411
Unorg 48-27	2,473	1,855	1,607	1,978	1,669
Dean Lake Township	2,349	2,226	2,597	4,204	3,524
Ross Lake Township	13,107	16,445	14,343	19,289	16,136
<i>FD Budget</i>	<i>247,300</i>	<i>247,300</i>	<i>247,300</i>	<i>247,300</i>	<i>247,300</i>

NOTE: MH = Manhours      MV = Market Value

**ALLOCATION OF FIRE DEPARTMENT MAN HOURS  
 \*\*\*REVISED AFTER ANNUAL MEETING w/TOWNSHIPS ON JANUARY 21, 2014 \*\*\***

AREA	2007	2008	2009	2010	2011	2012	2013	3-year 2011-2013	5-year 2009-2013	7-year 2007-2013
City of Aitkin	1032	684	536	678	440	410	412	1262 33.1%	2476 34.8%	4192 38.2%
Aitkin Township	124	60	152	168	146	78	124	348 9.1%	668 9.4%	852 7.8%
Farm Island Township	350	154	140	126	128	109	246	483 12.7%	749 10.5%	1253 11.4%
Glen Township	96	104.5	32	158	215	133	122	470 12.3%	660 9.3%	860.5 7.9%
Hazelton Township	64	98	38	30	2	95	122	219 5.7%	287 4%	449 4.1%
Kimberly Township	46	38	30	2	2	59	22	83 2.2%	115 1.6%	199 1.8%
Malmo Township	214	30	42	148	2	117	2	121 3.2%	311 4.4%	555 5.1%
Morrison Township	80	40	82	2	2	90	16	108 2.8%	192 2.7%	312 2.8%
Nordland Township	102	214	126.5	30	121	220	26	367 9.6%	523.5 7.3%	839.5 7.7%
Spencer Township	182	52	112	279	118	2	66	186 4.9%	577 8.1%	811 7.4%
Wealthwood Township	2	2	107	2	2	2	2	6 .2%	115 1.6%	119 1.1%
Unorg 48-27	2	2	2	2	40	2	2	44 1.2%	48 .7%	52 .5%
Dean Lake Township	36	2	2	2	2	2	2	6 .2%	10 .1%	48 .4%
Ross Lake Township	2	26	135	146	66	2	40	108 2.8%	389 5.5%	417 3.8%
TOTALS	2332	1506.5	1536.5	1773	1286	1321	1204	3811	7120.5	10959

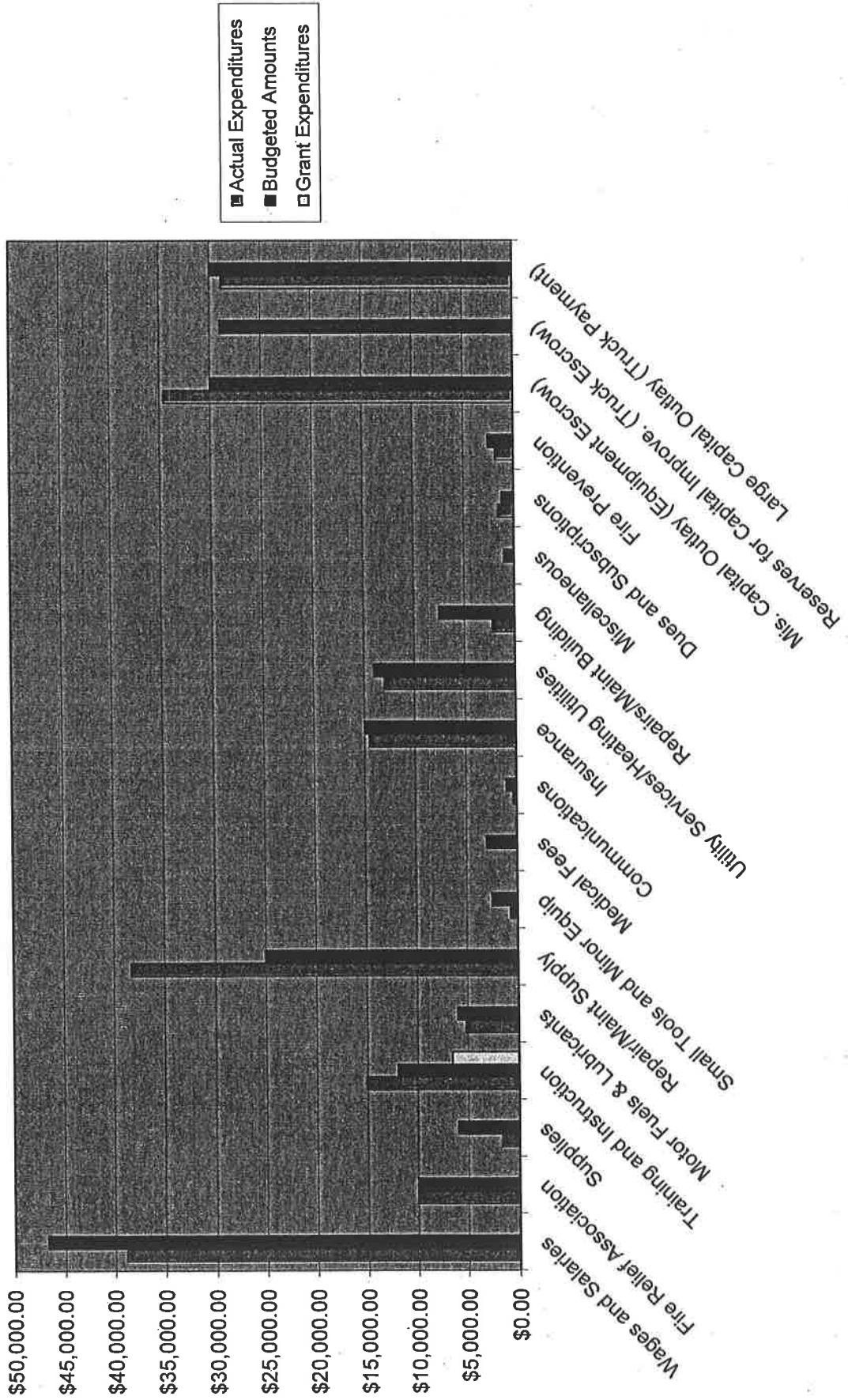
ALLOCATION OF TAXABLE NET TAX CAPACITY – *WITHOUT CITY*  
 AITKIN FIRE DEPARTMENT  
 2012 Payable in 2013

Area	Net Tax Capacity	Percentage
Aitkin Township	1,120,885	10.5%
Farm Island Township	2,865,901	26.8%
Glen Township	1,194,037	11.2%
Hazelton Township	2,131,250	6.7%
	<u>x 33.8%</u>	
	720,363	
Kimberly Township	340,363	1.6%
	<u>x 50%</u>	
	170,182	
Malmo Township	709,199	6.6%
Morrison Township	224,200	2.1%
Nordland Township	1,775,303	16.6%
Spencer Township	544,720	5.1%
Wealthwood Township	630,973	1.3%
	<u>x 22.2%</u>	
	140,076	
Unorg 48-27	96,178	.9%
Dean Lake Township	203,098	1.9%
Ross Lake Township	931,169	8.7%
<b>TOTAL</b>	<b>10,695,311</b>	<b>100%</b>

ALLOCATION OF TAXABLE NET TAX CAPACITY  
 AITKIN FIRE DEPARTMENT  
 2012 Payable in 2013

Area	Net Tax Capacity	Percentage
City of Aitkin	1,309,674	10.9%
Aitkin Township	1,120,885	9.3%
Farm Island Township	2,865,901	23.9%
Glen Township	1,194,037	9.9%
Hazelton Township	2,131,250	6%
	<u>x 33.8%</u>	
	720,363	
Kimberly Township	340,363	1.4%
	<u>x 50%</u>	
	170,182	
Malmo Township	709,199	5.9%
Morrison Township	224,200	1.9%
Nordland Township	1,775,303	14.8%
Spencer Township	544,720	4.5%
Wealthwood Township	630,973	1.2%
	<u>x 22.2%</u>	
	140,076	
Unorg 48-27	96,178	.8%
Dean Lake Township	203,098	1.7%
Ross Lake Township	931,169	7.8%
<b>TOTAL</b>	<b>12,004,985</b>	<b>100%</b>

## Expenditures vs. Budget 2013







AGREEMENT FOR FIRE SERVICE

This agreement, made and entered into this 1st day of January, 2006, between the City of Aitkin Fire Department, hereinafter called "the City of Aitkin", and the Town of 48-27 (Blind Lake) hereinafter called "the Town".

1. The City of Aitkin agrees to furnish fire protection to properties identified on the attached Addendum within the Town for the term of this contract and under the conditions herein provided.
2. In providing said fire protection service, the City of Aitkin agrees as follows:
  - a. To make reasonable efforts to respond to all fire calls in the Town.
  - b. To provide and keep in good operating condition fire fighting equipment adequate to provide such fire protection service.
  - c. It is contemplated that the City of Aitkin will provide similar fire protection service in several towns of Aitkin County and Crow Wing County. If two or more calls are received, the City of Aitkin will answer them in the order in which they are received.
  - d. Road and weather conditions must be such that the fire call can be made with reasonable safety to firefighters and equipment. The decision of the City of Aitkin as to whether the fire run can be made with reasonable safety to the firefighters and equipment shall be final.
  - e. The City of Aitkin shall not be liable in any way to the Town, or any inhabitant or property owner thereof, or to any other person, firm, or corporation for failure of the City of Aitkin to attend a fire, or for failure to perform, or to put out a fire, for damage to goods or for any other reason.
  - f. The City of Aitkin shall make no claim against said Town on account of damage to the property of the City of Aitkin while in the fire service of the Town. The City of Aitkin shall carry liability insurance protecting itself against damage claims of its firemen for personal injuries sustained while in the service of said Town, and further, shall carry liability insurance so far as negligent acts of the firemen in the employ of the City of Aitkin are concerned.
3. In determining the payment for fire services, the City of Aitkin will utilize the KOPP formula. The City of Aitkin will bill the Town on an annual basis an amount determined by the KOPP formula.
4. For the service herein contracted, the Town shall pay into the Fire Fund for such fire protection. Payments can be made in full for cost of this service, or immediately upon receipt by the Town of its tax apportionments.
5. This Agreement for Fire Service shall take effect January 1, 2006, and shall automatically renew for a one-year term upon the anniversary date of the effective date; however, this Agreement shall expire on December 31, 2015. Said renewal shall be under the same terms and conditions contained herein except that the payment for fire services as contained in Section 4 shall be determined on an annual basis as described in Section 3. If a party wishes to amend any provision of this Agreement, they must notify the other of their intentions in writing by registered mail. Termination of this Agreement prior to December 31, 2015, may be done by either party by notifying the other in writing by registered mail three (3) months prior to the anniversary date of this Agreement.

SEAL:

Town of 48-27  
Daniel Daniel Vice-Chair  
 Chairman  
John [Signature]  
 Clerk

SEAL:

City of Aitkin Fire Department  
 By [Signature]  
 Mayor

# Implementation Projects for the Mille Lacs Lake Watershed

(2010 – 2013) Clean Water Fund Grant Summary



CLEAN  
WATER  
LAND &  
LEGACY  
AMENDMENT

The three counties surrounding Mille Lacs Lake and the Mille Lacs Lake Watershed Management Group partnered to implement projects that will protect and enhance the water quality of Mille Lacs Lake.

Grant Amount:	\$ 73,543.00
Total Grant Funds Spent	\$ 73,091.55
Grant Funds Unspent:	\$ 451.45

Grant funds were utilized to provide financial and technical assistance related to the installation of the following projects:

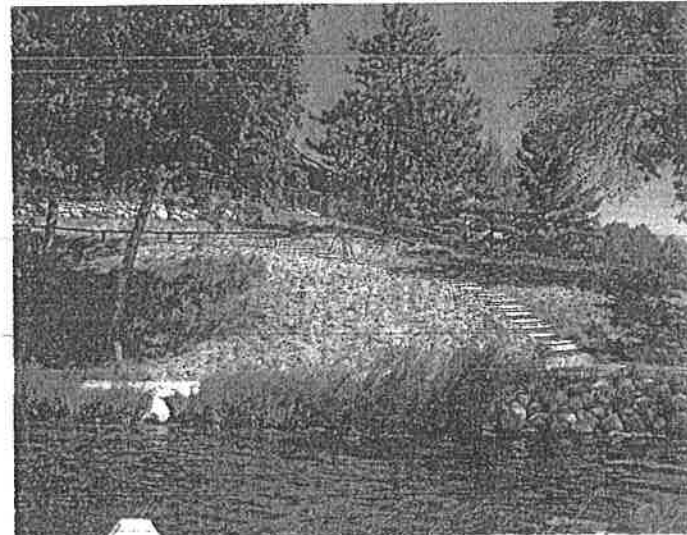
- Three Bio-Retention Basin (Rain Garden) Projects on Mille Lacs Lake
- Four Shoreland Revegetation Projects on Mille Lacs, Borden, and Little Whitefish Lakes
- Three Shoreland Stabilization Projects on Round Lake
- Two Shoreland Stabilization and Revegetation Projects on Mille Lacs Lake



Five of the projects were located in Mille Lacs County. One project was in Crow Wing County. Six projects were within the Aitkin County portion of the watershed.



Funding was awarded by the Minnesota Board of Water and Soil Resources. Technical assistance was provided by the Soil and Water Conservation District staff in Aitkin, Crow Wing, and Mille Lacs Counties as well as Technical Service Area 3 staff.

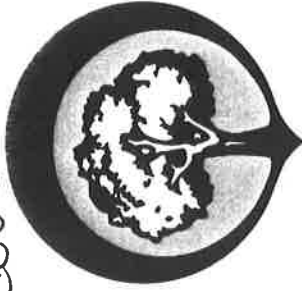


Breakdown of Funds

	Total Grant	Aitkin County	Crow Wing County	Mille Lacs County	Other
<b>Cost Share Funding</b>	48,739.28	18,895.86	3,177.62	26,665.80	-
<b>Technical Assistance</b>	20,887.47	1,579.70	2,850.00	4,382.77	12,075.00
<b>Administration</b>	3,464.80	1,227.50	401.38	1,835.92	-
<b>Unspent Funds</b>	451.45	-	-	-	-
<b>Totals</b>	73,543.00	21,703.06	6,429.00	32,884.49	12,075.00

Mr. Najsted

Handout



# TREE BASICS: From the Library of

## TREE CITY USA<sup>®</sup> BULLETINS

### Q: What can be done about damage to trees from de-icing salt?

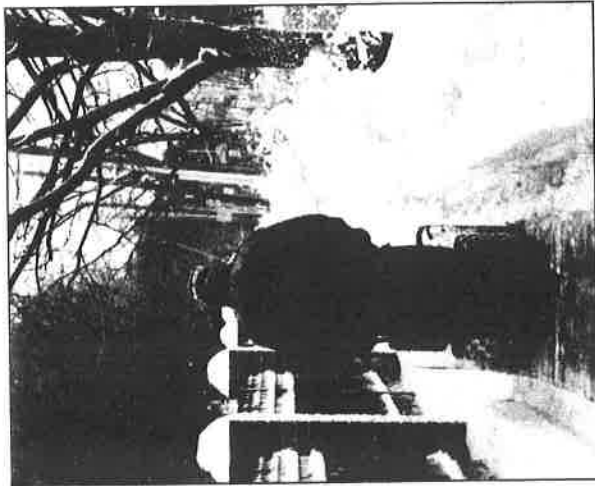
De-icing salt in winter doesn't have to be a fact of life in northern climes. While salt compounds are relatively inexpensive and widely available, their corrosive effects on concrete, bridges and other highway structures – to say nothing of automobile bodies – can be significant. Salt also damages trees in a number of ways.

A favorable option, growing in popularity, is a more environmentally friendly compound called calcium magnesium acetate. This product is no more corrosive than water and has little or no negative impact on trees, wildlife or waterways. While the cost per ton is more than salt, some studies show that it actually saves money in the long run. And while finding it in stores has been a challenge in the past, it is now becoming more readily available.

### Other ways to prevent salt damage are:

- Use coarse sand instead of salt.
- Use any de-icer sparingly.
- Avoid shoveling or dumping salt-contaminated snow or ice near trees or lawns where roots are present.
- Where salt spray is a problem, select salt-tolerant species for planting.

Tree City USA Bulletin No. 32 explains how salt affects trees, offers more tips for preventing damage, contains a list of salt-tolerant species and much more useful information. Help stop salt damage – send copies of Bulletin No. 32 to your street department, campus or other institution grounds staff, and others who still use de-icing salt.



More tips about damage from de-icing salt can be found in the Tree City USA Bulletin No. 32. Ordering information is available at [arborday.org/bulletins](http://arborday.org/bulletins).



Thank goodness for Will Backes.

He changed gloom to glee Wednesday when we started moaning about 15 below zero weather. Will whipped out evidence that "cold is a relative thing."

"When it's 60 above zero, Floridians turn on the heat, Minnesotans plant gardens. Fifty above and Californians shiver uncontrollably, Duluthians sunbathe. Down to 20 above zero and Floridians don thermal underwear, gloves and wool hats while Minnesotans throw on flannel shirts.

"Down to zero, everybody in Miami thinks he's dying while Minnesotans are finally closing their windows. If it should hit 25 below zero, Hollywood would disintegrate while Girl Scouts in Minnesota sell cookies door to door."

Handout

**AEOA 2013 Aitkin County Meal Service**

Senior Dining Meals	Meal Service Provider	Total Units	Total Unduplicated Clients
Aitkin	Rosallini's Café	1,315	14
Aitkin Manor/Blackrock	Rosallini's Café	2,345	24
Hill City	Hill Lake Café	2,540	189
Palisade	Palisade Café	2,018	120
<b>Total</b>		<b>8,218</b>	<b>347</b>

Home Delivered Meals	Meal Service Provider	Total Units	Total Unduplicated Clients
Aitkin	Rosallini's Café	1,152	17
Aitkin Recover	Rosallini's Café	2,407	12
Aitkin Truck	AEOA's Kitchen in Hibbing	4,835	44
<b>Total</b>		<b>8,394</b>	<b>73</b>

Senior Nutrition -Aitkin County  
2013 Targeting Statistics

Older Americans Act (OAA) Senior Nutrition Program - Statewide Guidelines for Adjustments in Service<sup>1</sup>

The guidelines are for use when considering service adjustments due to flat/decreasing OAA funding, it is increasingly important to target nutrition services to those most in need of access to healthful food. The guidelines are divided into three categories - utilization, targeting, and efficiency.

**AEOA Senior Dining Service - 2013 Nutrition Risk Targeting**

Targeting Indicator: The % of participants who are at Moderate to High Nutrition Risk

Locations	(blank)	LOW	MODERATE	HIGH	Grand Total	% Mod - High
Aitkin	3		1	10	14	100.0%
Aitkin Manor/Blackrock	6	2	6	10	24	88.9%
Hill City	17	38	87	47	189	77.9%
Palisade	2	37	53	28	120	68.6%

**AEOA Home Delivered Meal Service - 2013 Nutrition Risk Targeting**

Targeting Indicator: The % of participants who are at High Nutrition Risk

Locations	(blank)	LOW	MODERATE	HIGH	Total	% High
Aitkin	4	1	2	10	17	76.9%
Aitkin Recover	7	1	4	1	12	20.0%
Aitkin Truck	19	2	2	21	44	84.0%

**AEOA Home Delivered Meal Service - 2013 ADLs Targeting**

Targeting Indicator: The % of participants who have 2 or more limitations in Activities of Daily Living (ADLs)

Locations	0	1	2	3	4	5	6	7	8	(blank)	Grand Total	% with 2 or More ADLs
Aitkin	2		1	3	4		1	1	1	4	17	85.0%
Aitkin Recover				2	3					7	12	100.0%
Aitkin Truck	5	1	4	3	6		2	1	3	19	44	76.0%

<sup>1</sup> Excerpt from Minnesota Board on Aging Information Memorandum #04-13

**Senior Nutrition -Aitkin County  
2013 Targeting Statistics**

**AEOA Senior Dining Service - 2013 Poverty Targeting**

Targeting Indicator: The % of participants who have incomes less than 200% Federal Poverty Level

Locations	(blank)	100 (<=100)	150 (101-150)	200 (151-200)	NA (>200)	Unknown	Grand Total	% <=200
Aitkin		4	10				14	100.0%
Aitkin Manor/Blackrock		7	10	5	2		24	91.7%
Hill City	9	38	58	35	49		189	72.8%
Palisade		27	35	26	32		120	73.3%

**AEOA Home Delivered Meal Service - 2013 Poverty Targeting**

Aitkin		6	5	3	3		17	82.4%
Aitkin Recover		7	4	1			12	100.0%
Aitkin Truck		25	10	6	3		44	93.2%

**AEOA Senior Dining Service - 2013 Race Targeting**

Targeting Indicator: The % of participants who are from a diverse population

Locations	2 or More Races	Amer Ind/Alaskan Native	Asian	Black or African American	Native Hawaiian/Other Pacific Islander	Other Race	Race Missing	White Hispanic	White not Hispanic	Grand Total	% Minority
Aitkin		1							13	14	7.7%
Aitkin Manor/Blackrock									24	24	0.0%
Hill City									189	189	0.0%
Palisade									120	120	0.0%

**AEOA Home Delivered Meal Service - 2013 Race Targeting**

Aitkin									17	17	0.0%
Aitkin Recover									12	12	0.0%
Aitkin Truck									44	44	0.0%



**Frozen Meal Service  
Preference Form**

Client: \_\_\_\_\_

Menus Cycle: January to April 2014

No.	Breakfast	No.	Pork
1	French Toast /Sausage Links	34	Pork Chop Dinner
2	Hashbrown Egg Bake	35	Pork Chow Mein
3	Omelet w/sausage or ham	36	Roast Pork Dinner
4	Scrambled Eggs/Sausage	<b>Poultry</b>	
5	Spanish Egg Bake	37	Baked Chicken
<b>Beef <sub>1</sub></b>		38	BBQ Chicken Breast
6	Beef & Rice Casserole	39	Chicken Alfredo
7	Cheese Burger on a Bun	40	Chicken Broccoli Bake
8	Cabbage Roll	41	Chicken Pasta Salad (Cold Plate)
9	Cheese Burger Macaroni & Cheese	42	Chicken Strips
10	Chili	43	Chicken Tetrazzini
11	Goulash	44	Chili
12	Honey Glazed Meatballs	45	Honey Mustard Chicken
13	Meatballs & Gravy	46	Lemon Pepper Chicken
14	Meatloaf	47	Parmesan Crusted Chicken
15	Porcupine Meatballs	48	Roast Turkey
16	Roast Beef	<b>Vegetarian</b>	
17	Salisbury Steak		
18	Shepards Pie		
19	Spaghetti with Meat Sauce	49	Egg Bake (Meatless)
20	Spanish Rice	50	Macaroni & Cheese
21	Swiss Steak	<b>Food Notations</b>	
22	Tater Tot Casserole		
23	Vegetable Beef Soup		
<b>Fish</b>		Note any food allergies	
24	Fish & Potato Wedges		
25	Lemon Pepper Tilapia		
26	Tuna Casserole	Note gravy preference (e.g. small portion, served off to the side, etc.)	
<b>Pork</b>			
27	BBQ Pork Riblette		
28	BBQ Pork Sandwich		
29	Boiled Dinner		
30	Ham & Bean Soup		
31	Ham Dinner		
32	Harvest Stew		
33	Polish & Sauerkraut		

<sub>1</sub> Ground turkey may be substituted in entrees typically made with ground beef.

