

Patrick Wussow

From: Patrick Wussow <patrick.wussow@co.aitkin.mn.us>
Sent: Monday, November 04, 2013 11:07 AM
To: 'Berentson, Beau'
Cc: Tim Houle (Tim.Houle@co.crow-wing.mn.us); Deb Gruber (Debgr@co.morrison.mn.us); 'Wedel, Mark (mark.wedel@co.aitkin.mn.us)'; 'Elizabeth DeRuyck'
Subject: RE: FEEDBACK NEEDED ASAP on proposed PERA Changes

Beau

Thanks for the Heads-up

Aitkin County Would be opposed for several reasons:

1. The County operates our probation services through a Joint Powers Agreement with Crow Wing and Morrison Counties, so Aitkin is only speaking for Aitkin County.
2. The added expense for probation officers would be about \$30,000.00 per year.
3. The age-55 retirement will be even more expensive as this JPA organization has an OPEB retirement expenses of \$20K per employee. This will probably give five employees the ability to retire six years earlier.

Aitkin County has adopted AMC's policy plan and is in general opposed to another unfunded mandate, unless the State legislature can guarantee payment to cover our added expenses.

Patrick Wussow
Aitkin county Administrator

From: Berentson, Beau [<mailto:bberentson@mncounties.org>]
Sent: Monday, November 04, 2013 10:15 AM
To: Berentson, Beau
Subject: FEEDBACK NEEDED ASAP on proposed PERA Changes

Administrators, Coordinators and all –

This morning, the Legislative Commission on Pensions and Retirement announced their agenda for their two-day meeting later this week. On that agenda is S.F. 998/H.F. 884, **legislation that would add probation officers, 911 dispatchers, and Hennepin County security guards to the PERA Correctional Plan**. This bill will be heard either Wednesday or Thursday of this week.

Adding these employees to the Correctional Plan would increase employer pension contributions on these employees from 7.25% to 8.75%. The employee contribution would be reduced from 6.25% to 5.83%. The employees would also be eligible for higher post-retirement benefits, and would be given an age-55 retirement after meeting certain service years requirements. This change would clearly be covered by AMC's platform position that "opposes the creation of new pension plans for individual groups of county employees and the transfer of certain job classes to plans that increase benefits and costs to the employee and employer."

I'm hoping your county can provide some feedback to me on this issue to help me prepare testimony for this hearing, including any cost estimates of what these increased contribution rates would mean for your county. As I said, this bill could come up as early as Wednesday afternoon.

Beau Berentson
General Government Policy Analyst
Association of Minnesota Counties

Office: (651) 789-4343
Cell: (651) 303-4933
bberentson@mncounties.org

From: lcpr-bounces@web2.commissions.leg.state.mn.us [mailto:lcpr-bounces@web2.commissions.leg.state.mn.us] **On**
Behalf Of Lisa Diesslin
Sent: Monday, November 04, 2013 8:49 AM
To: 'LCPR ListServe'
Subject: Nov. 6-7 Agenda

Legislative Commission on Pensions and Retirement
November 6, 2013 - 1:00 p.m.
November 7, 2013 - 9:00 a.m.
Room 123 Capitol
Chair: Sen. Sandra L. Pappas

TWO-DAY AGENDA

Note: Topic consideration may follow a different order depending on presenter/testifier availability.

November 6, 2013 - 1:00 p.m.

1. Approval of minutes.
2. Review of Minnesota defined benefit public employee retirement plan post-retirement adjustment mechanisms, third consideration:
 - a) Concept of benefit adequacy.
 - b) Retiree purchasing power issues.
 - c) Retiree cohort information.
 - d) Survey of post-retirement adjustment procedures in comparable states.
 - e) Correspondence from the Laura and John Arnold Foundation
3. Alternative retirement plan design, first consideration.
 - Commission staff materials
 - Presentation by MSRS, PERA, and TRA on the 2011 Retirement Plan Design Study Report
4. Local government correctional retirement plan expansion, first consideration:
S.F. 998 (Hayden); H.F. 884 (Nelson): PERA-Correctional; Adding probation officers, 911 dispatchers, and Hennepin County security guards to plan coverage.

November 7, 2013 - 9:00 a.m.

5. Continuation of agenda items from Wednesday
6. Other items as designated by the Commission chair.

Lisa Diesslin, Commission Assistant
Legislative Commission on Pensions and Retirement
Ph. 651-296-6806 Fx. 651-297-3697
lisa.diesslin@lcpr.leg.mn Website: www.lcpr.leg.mn

Please do not reply directly to this message (it goes back to the ListServe rather than to a person).
To contact the Pension Commission staff, use lcpr@lcpr.leg.mn or lisa.diesslin@lcpr.leg.mn

To Unsubscribe: Send a blank email to lcpr-unsubscribe@web2.commissions.leg.state.mn.us

**STATEMENT OF BUSINESS TRANSACTED IN
OFFICE OF COUNTY RECORDER, AITKIN COUNTY**

DURING October, 2013
DEPOSIT OF CHECK OR CASH \$ 31,186.05 TO AITKIN CO TREASURER

NATURE OF BUSINESS TRANSACTED		AMOUNT OF FEES RECEIVED
UCC		0.00
NOTARY		60.00
NOTARY SURCHARGE	9.2030	Expired 8/1/10
TORRENS		234.00
TORRENS ASSURANCE	9.2031	27.00 ***
COUNTY GENERAL FUND		8047.50
STATE GENERAL FUND	9.2036	6016.50 ***
RECORDER TECH FEE		5730.00
UNALLOCATED		6303.00
STATE WELL CERT.	9.2027	1190.00 ***
COUNTY WELL CERT		210.00
BIRTH CERTIFICATES		209.00
CHILDREN'S SURCH.	9.2024	72.00 ***
BIRTH/DEATH SURCH.	9.2022	512.00 *** (96/416)
DEATH CERT.		355.00
2010 LEG. SURCH 144.226 SUBD 3 (b)		240.00 ***
COPIES & C/COPIES		1980.05
TOTAL		31186.05

**WORK DONE FOR VARIOUS COUNTY AGENCIES
FOR WHICH NO PAYMENT WAS RECEIVED**

RECORDING HONORABLE DISCHARGES	0.00
AITKIN COUNTY	46.00
AITKIN CO ROAD & BRIDGE	46.00
OTHERS	92.00
TOTAL	184.00

AITKIN, MN Oct. 31 , 2013
ZIP 560
YEAR TO DATE 5156
PREVIOUS YEAR \$33,076.90

*Diana M. Hafferty Co Recorder
by Alex C. Hoppe, deputy*

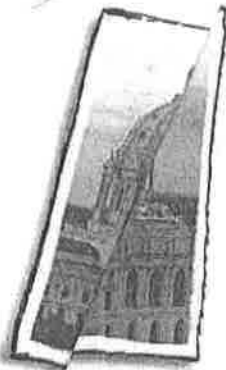
Sue Bingham

From: Patrick Wussow [patrick.wussow@co.aitkin.mn.us]
Sent: Tuesday, October 29, 2013 10:39 AM
To: mark.wedel@co.aitkin.mn.us; 'Marcotte, Anne'; 'Brian Napstad';
laurie.westerlund@co.aitkin.mn.us; 'Niemi, Don'
Cc: 'Sue Bingham'
Subject: AMC Wetland banking Policy - attached
Attachments: 3907_001.pdf

Good morning Commissioners:

This morning I spoke with Anna Lee from AMC. She will make sure the correct wording is presented for the December to AMC Policy Adoption meeting. She said she has always been explaining the proposed policy the way Commissioner Napstad clarified. The correct version should say “developers” not counties.

She thank all of you for bringing the clarification to AMC’s attention.



Legislative Priorities 2014

For more than 100 years, the Association of Minnesota Counties (AMC) has assisted the state's 87 counties in providing effective governance for all citizens.

Potential 2014 Legislative Action Items

Environment and Natural Resources

- ✦ **Shoreland Rule Making:** AMC should act to oppose any attempt by the Department of Natural Resources (DNR) to initiate shoreland rule making.
- **Aquatic Invasive Species (AIS):** AMC should form a work group to identify strategies to address AIS issues.
- ✦ **WCA banking bill:** AMC should support legislative efforts to create recommendations for the development of a fee program, administered by BWSR, which will allow for maximum public value for wetland mitigation projects by giving counties the opportunity to purchase credits (that BWSR could use to recreate wetlands anywhere in the state) in lieu of acre for acre replacement within the county.
- **Electronic-Waste Program Updates:** AMC should work with the Pollution Control Agency and other partners to update the current e-waste program to address new technology and other program adjustments that are needed.

General Government

- ✦ **MAGIC Act:** AMC should advocate for passage of the MAGIC Act. This would require the AMC Board to evaluate the current status of the MAGIC Act, and provide recommendations as to the form the bill will take in 2014.
- **Workers' Compensation:** Last session, the Legislature approved recommendations from the Workers' Compensation Advisory Council, which included an increase in the maximum compensation rate and an extension of workers' compensation coverage for post-traumatic stress disorder (PTSD) injuries arising out of employment. MCIT has said that these changes will affect the cost of providing workers' compensation coverage. AMC should support MCIT's recommendations for modifications to the workers' compensation changes passed last session. AMC staff is still meeting with MCIT staff to finalize legislative recommendations for 2013. These changes will possibly require gaining support of the Workers' Compensation Advisory Committee - which is comprised equally of labor and private-sector employer representatives - that approved the original Workers' Comp law changes last session.
- **Local Impact Note:** AMC should advocate for legislation that would prohibit the Legislature from voting on bills that may result in increased costs for local governments without first having an opportunity to review a Local Impact Note (which estimates cost impacts on counties) prepared by Minnesota Management & Budget. This will likely carry a significant state cost, as Local Impact Notes are currently only prepared upon legislator request.
- **Sales Tax Exemption for Joint Powers:** AMC should advocate expanding the local government sales tax exemption passed last session to include all joint powers and cooperative efforts between local governments. AMC is currently working the Department of Revenue to further clarify the Department's position on this issue. This may carry a significant state cost, as the Department of Revenue argues they didn't consider all of these entities when preparing original cost estimates for the exemption last session.
- **Sunset on County Mandates:** AMC should advocate for legislation that would begin a process to sunset all state mandates on counties, requiring the Legislature to actively reinstate the mandates in order for them to continue. This would require internal AMC discussion as to what constitutes a "mandate" and whether AMC wants to see every mandated county function/requirement repealed, or only a certain subset.

Legislative Principles

- **AMC strives** to preserve control so that counties have the flexibility to address the most pressing needs of the communities.
- **AMC supports** state budget solutions that avoid adding shifting a disproportionate burden to counties through cost shifts, cost shares and unfunded mandates.
- **AMC believes** that funding for county-administered services should be commensurate with the level of service or results deemed acceptable.

Health & Human Services

Electronic-cigarette Regulation: AMC should support legislation that would provide stricter regulation of e-cigarettes statewide such as requiring e-cigarettes to be sold behind the counter in stores, requiring e-cigarette stores and "vapor lounges" to be licensed as tobacco retailers, and/or updating indoor air laws to include a ban on e-cigarettes.

Eliminate the Chemical Dependency Cost Share: AMC should introduce legislation to eliminate the county share of the consolidated chemical dependency treatment fund (CCDTF). Implementation of the Affordable Care Act is changing the nature of the county role in administering chemical dependency treatment services. It's anticipated that moving forward the majority of public assistance clients will have chemical dependency benefits covered through health plans and that the counties will no longer play a major role in determining the need for service. As such, the counties obligation to fund a portion of these services should be eliminated.

• **Human Services Administrative Simplification:** AMC should support legislation to simplify eligibility processes for human services programs. Minnesota's human services system is overly complex with many eligibility rules too complex to effectively automate. This complexity results in significant expenditures of publicly funded resources. As the state moves towards modernization of its human services technology systems, it is critical that programs be simplified and streamlined.

• **Streamlining Public Health Statutes (updating 145A):** Given many changes since 1976, the Local Public Health Act (Minn. Stat. 145A) has become confusing, complicated and disjointed. Not only is it in need of general clean up, but it does not reflect current public health practice. AMC should support legislation that will move our state-local public health partnership toward shared goals of improved accountability and performance management, better definition of public health roles and areas of responsibility, and a streamlined and more functional statute.

Public Safety

✗ **Probation Funding Reform:** Currently the method of funding probation services is broken, with multiple pots of money, including separate funding source for each of the county based delivery systems (CCA and CPO). This system is confusing, not transparent and has contributed to years of underfunding for probation. This proposal would combine those funding sources in to a single stream directed to county boards that would then choose to use that money to deliver probation services using any of the three current delivery models.

- **Disaster Aid:** AMC should support the Association of Minnesota Emergency Managers (AMEM) proposal to create a grant program that would allow for disaster aid to flow to counties when a federal disaster has been declared without the need for a special session. The program would also allow for state aid to counties that do not meet the threshold to be included in a federal disaster declaration.
- **Programs That Reduce Jail Costs:** Restore funding reductions or maintain funding levels for programs that reduce costs in jails. An example Sentenced to Service (STS) programs which had their funding cut in half a couple of years ago.
- **Interoperable Data System:** AMC should support an appropriation to the Department of Public Safety for a grant program to assist local governments with cost related to creating an interoperable data system.

Transportation & Infrastructure

✗ **Transportation Funding:** AMC should actively support legislation as part of a comprehensive transportation/transit funding package that includes new revenue. New revenue would likely come from a fuel tax increase and an increase to the metro county transit sales tax - under authority of the Counties Transit Improvement Board (CTIB). ■

AMC Internal Services

Executive Director
Julie Ring
Office: 651-789-4330
ring@mncounties.org | 1-247-9418

Environment & Natural Resources
Annalee Garletz
Office: 651-789-4322, Cell: 651-303-4856
garletz@mncounties.org

General Government, Taxes & County Operations
Beau Berentson
Office: 651-789-4343, Cell: 651-303-3336
bberentson@mncounties.org

Health & Human Services*
Rochelle Westlund (*Start date 10/28/13)
Office: 651-789-4325, Cell: 651-341-8487
rwestlund@mncounties.org

Public Safety & Corrections
Ryan Erdmann
Office: 651-789-4345, Cell: 651-402-5745
erdmann@macrac.org

Transportation, Energy & Bonding
Abbey Bryduck
Office: 651-789-4339, Cell: 651-303-4854
abryduck@mncounties.org

AITKIN COUNTY HISTORICAL SOCIETY

DEPOT HIGHLIGHTS NEWSLETTER

Fall 2013 – Volume 18, Issue 4

GIVE TO THE MAX DAY

THURSDAY NOVEMBER 14, 2013

Give to the MAX Day takes place on www.giveMN.org. This is a **24 hour event** that takes place on November 14th for all non-profits in Minnesota. For every hour that we receive a donation we have two chances to win an extra \$1,000.00. If we end up raising enough money to be in the top ten there are additional prizes from \$10,000.00 to \$500.00. We could win money in three different categories. (Main Leaderboard, Small Nonprofit Leaderboard & Greater Minnesota Leaderboard.) In addition, there are five power hours, (2:00-2:59am, 5:00-5:59am, 5:00-5:59pm, 6:00-6:59pm & 11:00-11:59pm) during which, if we raise the most money we would receive \$1000.00. In addition to the online event, the nonprofits in Aitkin County will hold an event (9am to 3pm) in the Hodgedon-MacDonald building (Butlers) where visitors can visit booths of the non-profits. The street on the south side of the building will be closed off for this event to make room for an airplane, fire truck, ambulance, & climbing wall. Each non-profit will have a booth for people to donate to their non-profit. We (Aitkin County Historical Society) will have use of a 20' by 30' room which will hold displays about Aitkin and Aitkin County. (City of Aitkin, Hodgedon-MacDonald building, Logging, Riverboats, Blacksmith shops, Aitkin County Schools & the Opera house.) **2012 Give to the Max day** raised funds totaling **\$16,391,905.** for **4,381** organizations from **53,339** Donors. In addition, a total of **\$575,000.** was raised for 255 schools from 7000 donors. Metro donors gave a total of **\$530,000.** to out state nonprofits. Out of state donors gave **\$410,000** to greater Minnesota. Donors from 34 foreign countries gave **\$45,000** to Minnesota. This event is the largest online giving event in the world. **Remember November 14th as the day to donate to the Aitkin County Historical Society and other Minnesota non-profits on line.** Help your favorite non-profits earn some extra funds. By donating online you can donate to several organizations at one time with one credit card transaction. Watch for matching funds and make your donation count double. If you would like to offer matching funds for this event please contact me at the Depot. **All donations are tax deductible!!!!!!!!!!!!**

Garage Sale a huge success again this year due to all of the great donations we received, the hard work of all our volunteers that made pickups, hauled items to the fairgrounds, sorted all the merchandise, priced it, worked the sale and of all the people who bought items at our sale. The history of our garage sale income for the past five years is: 2009 - \$4,010.00 the first time we ever broke the \$4,000.00 mark. 2010 sales increase to \$4,576.00 and in 2011 it fell to \$4,538.00. In 2012 our sale numbers jumped to \$6,512.00 shattering our old mark of \$4,576.00. 2013 goes down as our best sale in the history of the Historical Society with sales of \$8,048.00. A great big thank you to everyone who donated items, volunteered or bought merchandise at this year's sale. 1723 people attended our sale this year. We are **starting to collect for next year's sale**, so please remember us when you have unwanted sellable items to donate. During our sale Boyd Bremner and Elaine Hallbeck worked together and **sold 658 Raffle Tickets.**

Our **Annual Raffle Drawing** will be held on December 7th at 2pm during our Open House. The first time we sold over 2000 tickets was in 2012 (2024 tickets). The total tickets sold so far this year is 3142. This year's raffle prize list, including the early-bird drawing in August, is 89 prizes. Our local businesses were very generous by donating a variety of prizes listed in this newsletter. You can thank them for their generosity by **shopping local.**

MEMBERSHIP IS THE KEY TO OUR SURVIVAL!!!! As of today, **58 memberships have not renewed.** We have finally broken the 400 member mark, so if you have not paid your membership dues this year, please do so now. If not we will fall below the 400 mark again. Your membership is needed to continue to collect, preserve and disseminate our Aitkin County history. We are working hard to display a wide variety of Aitkin County history. Do you know of a neighbor or relative that loves history? Tell them about the Aitkin County Historical Society. Invite them to visit & join the Depot Museum. Help us continue to grow and collect Aitkin County history.

We will host a Minnesota Historical Society Traveling Exhibit "**Electrifying Minnesota**" for Mille Lacs Energy from late May through July. This display will help celebrate Mille Lacs Energies 75th Anniversary. The display is interactive and should bring in a crowd to the museum. It will take a lot of work to make room for this display. We will have to take down several displays to clear the space and put it away in our storage building. When the electric display comes down we will have to build new displays in the empty space. Each part of this process will have to be completed in a couple of days. If you can help with this process please contact me at the museum? We will need help towards the end of May to clear the space and again after our garage sale to rebuild displays.

Cookie Walk Coming to the Depot Museum on December 7th starting at 9:30am. So dust off those Christmas Cookie recipes. We are asking members to **donate four dozen Christmas cookies** for this event. Cookies can be dropped off at the Depot Museum on Wednesday December 4th and Friday December 6th. For earlier drop off contact me at the Depot. This event is held in conjunction with our Annual Open House and Raffle drawing which is our last event of the year.

Historical Society is beneficiary in Jeannette Zilverbergs estate. The money received could be used to increase the number of displays at the museum by adding onto building #2 and/or creating a research area in the Depot building. The research area would also be home to our Lending Library. (Over 650 history books are currently in our Library) Visitors will have access to our microfilm library, family histories and museum files. Computers, copy machines and tables would be available for visitors to work on research projects.

Railroad Land under museum buildings (50'X450' strip) is still owned by the railroad. We have had the land surveyed and appraised at \$73,000.00. We currently have \$33,000.00 in our account to purchase the land. Grants have been submitted for the remainder so that we can purchase the land from the railroad. Why purchase and not continue to lease? We currently pay \$103.00 a year but have been informed that it could go up to \$1800.00. Once we own the land, we will no longer have to ask the railroad for permission to add onto our buildings. Also, the railroad is talking about adding a second set of tracks because of increased business which could affect the price and whether we will be able to stay in the Depot building.

"Barns of Aitkin County" coming soon. Copies will be donated to all Schools, Libraries and senior care centers located in Aitkin County. The book will be available for purchase at the Depot Museum for \$19.95 around December 6th. Members receive a 10% discount. Over 800 photos are featured in the book, many with their histories included. This will make a great Christmas present for that hard to buy for relative. We received funds to publish this book from: Kaplan foundation (\$1000.00 memorial for KC (KAP) and Hazel Kaplan), \$500.00 grant from Mille Lacs Band of Ojibwe Indians, \$1000.00 Mille Lacs Electric Roundup Grant. Donation received from Aitkin IOOF Lodge and American Legion Post 86 and the Aitkin Riverboat Lions.

Volunteers needed at the Museum! We need volunteers to sit at the front desk, accession items into the museum, work on picture archiving, working on research requests from visitors, creating new displays, research material for book projects, promoting the museum, writing grants, and organizing our files. If you have any time to volunteer (be it a couple of hours or several days a month) please contact me at the depot. Have you seen an interactive display for children in another museum and think that it could work in ours? Please let us know about it.

Gregory Leach (Administrator)

Greetings:

The sky is filled with abundance of gray clouds. The setting sun is descending in the horizon. In the cloud cover there is an opening and you will notice a beautiful bright cloud. The sunshine reaches out and lights up that one cloud in the distance to make it glow. That one special glowing cloud reminds me of our Administrator Greg Leach. With a smile on his face he is constantly on the go. Organizes the big events, displays collections of historical items, collects history to preserve for the future generations and adding to the to-do-list for the volunteers.

The volunteers are eager to tackle the jobs that are listed. Building a train display case was one of the most recent items along with a display of the inside of a settler's cabin. All the projects are worked on by putting the volunteers skills to great use. The anticipation of a train caboos is what everyone is looking forward to making an appearance in the area. The caboos (whenever it is found) will bring big smiles and twinkle in the eyes for Administrator Greg and the volunteers.

The garage sale was a hugely enormous event. Greg did everything well to organize the sale and with the volunteers spend tons of hours preparing the fun occasion. The destination of two extra large buildings at the fair ground involved the packing, transporting, unpacking the many (ever so many) sale items. The toys items were together along with placing many other items together (like glassware, furniture, Christmas decorations and so many more items.) When volunteers were thirsty Greg offered to retrieve water for them and did so. Greg Leach was constantly on the go. The Aitkin County Historical Society has been honored to have a man like Greg as our Administrator. Thank you for all you have done.

The McGregor Historical Society will host a display in regards to the WWII era from the Minnesota Historical Society. I plans are to make the display in November. Visit to other museums is educational and inspiration. Take time to visit McGregor Historical Society or another one in your area.
Sincerely,

Darlene Maciej, President

The Minnesota Historical Societies exhibit "Minnesota Homefront", emphasizes the efforts of adults and youth back home during World War II to support the war effort. The exhibit includes artifacts and personal stories from the host community, in this case, Aitkin County. Minnesota Homefront will be on display at the McGregor Historical Society location (94th N. Maddy street) November 9, 2013 – January 5, 2014 (9am to 3pm daily). A number of special events are planned for the public during the display period.

The Five W's of Life

Who you are is what makes you special. Do not change for anyone.

What lies ahead will always be a mystery. Do not be afraid to explore.

When life pushes you over, you push back harder.

Where there are choices to make, make the one you won't regret.

Why things happen will never be certain. Take it in stride and move forward.

A Native American grandfather was talking to his grandson about how he felt. He said, "I feel as if I have two wolves fighting in my heart. One wolf is the vengeful, angry, violent one. The other wolf is the loving compassionate one." The grandson asked, "Which wolf will win the fight in your heart?" The grandfather answered, "The one I feed."

Memberships

Senior - \$7.50

Individual - \$15.00

Family - \$20.00

Business - \$30.00

I NEED YOUR HELP

Go on line to givemn.org. Look up the Aitkin County Historical Society page.

Do three things.

Scroll down the page and

- Comment on the Organization
- Become a Fan
- Donate on **November 14th**

LOOKING FOR TRAINS TO DISPLAY IN RAILROAD ROOM

We still need more trains to fill our display case. Our first case is filling up but, a second one is being built. Please help us fill up both cases. If you have any trains that you would be willing to donate or loan for this display contact Greg at the depot. (218-927-3348)

GRANT WRITER NEEDED!

Need grants for the following:

- Purchase land under depot.
- Purchase Armory building.
- Publish Historical map of Aitkin County.
- Purchase Caboose for Depot.
- Purchase scanner for negatives.
- Promote ACHS Museum
- Research Aitkin Co. Schools
- Research Aitkin Co. Churches.

2013 GOALS

1. Membership over 420 members.
2. Complete Obituary files.
3. Visitor count surpasses 5000.
4. Raffle sales reach 2500.
ACCOMPLISHED!
5. Garage sales surpass 6500
ACCOMPLISHED!
6. Increase number of displays in museum. - **DONE**
7. Lending library set up and running.
8. Clean up museum files.
9. Organize museum supply areas. - **COMPLETED!**
10. Find a Caboose.
11. More grant money to promote museum.

BUSINESS MEMBERSHIPS

1. Cost only \$30.00 a year.
2. Businesses are listed in our quarterly newsletter for other members to support.
3. Businesses are listed on our web site with links to their web site or email.
4. ACHS uses our business members first.

2013 COMPLETED PROJECTS

1. Repairs of Cedar strip boat completed and placed on display in building #2
2. Wheels attached under glass cases
3. Shelf for supplies built/installed.
4. Shelf built in Military display for flag
5. Swing from porch re-stained/Painted
6. Photo album for R/R room completed
7. Thermostat moved in building #3
8. Light switches added in building #3
9. Wicker furniture repaired and painted.
10. Drawing barrel for raffle constructed
11. Prize spinning wheel constructed.
12. Outboard motor display stand built.
13. Outboard motors put on display.
14. Log cabin display in Depot doubled in size to display more artifacts.
15. Walls in Log Cabin display finished.
16. Shadow box for trains built and installed in railroad room.
17. Trains displayed on window sills, shadow box and glass cases.
18. Water sealer put on lumber wagon.
19. Aluminum paint put on deck of small railroad speeder.
20. Green bench on north side of depot repaired and painted.
21. New web site up and running.
www.aitkincohs.org
22. 2nd Railroad luggage wagon painted.
23. Log Cabin storms and doors sealed.
24. Six picnic tables water sealed.
25. Administrator time-line book completed.
26. "Barns of Aitkin County" at publishers.
27. 2nd Train shadow box built
28. Additional storage shelves for photo archives installed.
29. Log sleigh rebuilt with new lumber.
30. Black paint touched up on all artifacts and depot building.
31. Display set up in the Hodgedon / MacDonald (Butler) building

CURRENT PROJECTS

1. Completing Obituary files.
2. Historical Map of Aitkin County.
3. Schools of Aitkin County book.
4. Churches of Aitkin County book.
5. Riverboats of Aitkin County book.
6. Adding additional information on WEB site.- **ONGOING**
7. Complete our set of AHS yearbooks.
8. Increasing membership. - **ONGOING**
9. GPS Walking Tour of the City of Aitkin.
10. Developing research facility at Depot.
11. Obtaining title to land under Depot.
12. Increasing local interest in Museum.
13. Create photo albums for each display connecting artifacts to Aitkin County.

THIRD QUARTER ACCESSIONS

57	Oscar Iverson Family	Vietnam POW Bracelet, Wildwood School teacher's desk
58	Mary Ann Holder	5 – Yearbooks
59	Marlene Kingsley	Double Tree, Squeeze box
60	Maxine Ridlington	Items from Christian Science Church
61	Marvin Way	Fred's Café Ash Tray
62	Don Christensen	1877 Ledger, Aitkin Co. Assessment Roll
63	Robert Ferro	"Aitkin" Spoon
64	Pearl Jensen	Books & Pamphlets on Creamery Operations
65	Cheryl Kangas	Commercial Permanent Wave Machine
66	Paul Boucher	Many items from Ziske's
67	Erickson Estate	Mail Bags, Military uniforms, Drum & Bugle Corps. Info & artifacts, photos, Aitkin KluLkuxKlan Seal, Vietnam bandoleer, 1910 Football Game Sweater & Leather helmet, plus 100's of items
68	Jeff Cline	Many paper items, County Attorney Register 1929-1953
69	John Hendrickson	Books & photos
70	Jo White	Clock & Towel
71	Elaine Hallbeck	Misc. Paper items
72	McGregor Lutheran Ch.	Coffee Pot
73	Marion Bottila Anderson	1954 McGregor H.S. Sweater
74	Robert Wold	Red Velvet Wedding Dress, Black ladies dress
75	Alice Fageroos	Centennial Fire Department Hat
76	Tom Arnold	1915 Republican Newspaper
77	Carol Goede	Wedding Dress, Head piece & ring pillow
78	Unknown	9 – O Gauge Train Cars
79	Vivian Rice	3 – Furniture throws, Rug, Decorative hanging, Shirt, misc.
80	Pat DeMars Pferffer	book – Adventures in MN History, Information about Verdon School #2
81	Alice Graff	3 – photos, Libby Cemetery File, Henrikson family history
82	Garage Sale	Pencil Sharpener, Scale, Eye Glasses, Sting Board Game, Books, 3 – War Necessity Certificate Holders, Forge Ladle
83	Betty Lang	5 – Negatives of 1952 Flood
84	Glen Smeltzer	Old Wood Level, Handmade Draw Knife, Thermometer from the Kibby Store In Bennettville
85	Elaine Hallbeck	Class of '42 Reunion booklets & photos
86	Tom Arnold	book – Twelve Poses West
87	Ardis Kane	photos and family histories
88	Gerald Hedberg	HO – Engine, HO – Box car, 2 – BN Pens, 1 – Event button, 6 BN News Magazines
89	Florence Tarr	HO Train set with 8 cars
90	Randy Wall	Photo Holden Church, Map of the town of Kimberly, 2/13/1886 Aitkin Age
91	Donohue Sarff	Aitkin coop livestock exchange minute book and financial book, photo copies of Financial book, disc of minute book
92	Carol Bailey	Simonson's family history book
93	Carlton County H.S.	2 – photos of Ida Swing
94	Phyllis Hagquist	AHS Shirt
95	Jo Schneider	Post Card – Bell Horn Bay Resort on Big Sandy

The above list is of all the items received during the third quarter of 2013. As you can see, a wide variety of items have been donated to the ACHS Museum during this quarter. Many of the items will be added to current and future displays in the museum. Photos have been added to our photo archives. Paper items which help to fill in gaps in our Aitkin history have been placed in files that can be accessed for research. **Please share items such as photos and histories with the Aitkin County Historical Society.**

2013 RAFFLE PRIZE LIST

1. Chanhassen Dinner Theater for two donated by KKIN radio – (\$150.00 value)
2. Grand Casino Mille Lacs Hotel/Buffer for two package – (\$125.00 value)
3. Night stay at the Ripple River Motel – (\$80.00 value)
4. 2 in 1 Smoke & Carbon Monoxide Alarm donated by Northern Air - (\$60.00 value)
5. Jeanie & Co. – (\$60.00 Gift Pack)
6. Burt's Bees Gift Basket donated by Lundberg Plumbing – (\$50.00 value)
7. Metal Fondue set – donated by Hawkeyes Inc. – (\$50.00 value)
8. Digital Thermostat donated by Gravelle Plumbing & Heating - (\$45.00 value)
9. 18" Rope STER Chain + Eagle donated by MN Gold Buyer – (\$45.00 value)
10. Digital Thermostat donated by Gravelle Plumbing & Heating - (\$45.00 value)
11. Cross Woods Golf Course – One round of golf /w shared cart – (\$45.00 value)
12. Camp Lantern 20 LED donated by Mille Lacs Energy Cooperative – (\$38.00 value)
13. Free Lube, Oil and Filter from Brandl motors – (38.00 value)
14. Lake Country Auto & Tire Center Oil Change – (\$37.00 value)
15. Squirrel Feeder donated by Hyytinen's Hardware - (\$35.00 value)
16. Subscription to the Aitkin Independent Age – (\$35.00 value)
17. Cuyuna Country Auto – Full Service Oil Change – (\$32.00 value)
18. Roadside Restaurant – (\$30.00 Gift Certificate)
19. Framed Eagle Print donated by Aitkin Furniture – (\$30.00 value)
20. Birchwood Café – (\$30.00 Gift Certificate)
21. Rialto Movie Theater – (\$25.00 Gift Certificate)
22. \$25.00 Pre-paid VISA card donated by Security State Bank
23. The Office Shop – (\$25.00 Gift Certificate)
24. Players or 40 Club – (\$25.00 Gift Certificate)
25. Freedom Gas Gift Card – (\$25.00 value)
26. Secret Hideaway framed print donated by Aitkin Rental Center – (\$25.00 value)
27. Fall Table Runner donated by Sew Much & More – (\$25.00 value)
28. Rialto Movie Theater – (\$25.00 Gift Certificate)
29. Hometown Building Supply – (\$25.00 Gift Certificate)
30. Simply Chic – (\$25.00 Gift Certificate)
31. Tea Light Centerpiece donated by Thrifty White Pharmacy – (\$23.00 value)
32. One 8" Dairy Queen Cake – (\$21.00 value)
33. County Market – (\$20.00 Gift Certificate)
34. The Beanery an Internet Café – (\$20.00 Gift Certificate)
35. Gift Certificate for 5 tans donated by Lorries Hair Studio – (\$20.00 value)
36. Framed Fishing print donated by Unclaimed Freight North – (\$20.00 value)
37. Universal Remote Control donated by Enberg TV – (\$20.00 value)
38. Tall Flower Vase donated by Giada's Boutique – (\$20.00 value)
39. County Market – (\$20.00 Gift Certificate)
40. Shakespeare Fishing set – donated by Greg Leach (\$20.00 value)
41. ACHS Family Membership – (\$20.00 value)
42. Free Hair cut at Coombs Cuts – (\$18.00 value)
43. Salon Inspire – Free Haircut – (\$18.00 value)
44. 25 Piece Tool Kit with Flashlight – donated by RDJ Specialties
45. 12 Suet cakes & holder donated by Aitkin Pet & Farm Supply – (\$16.29 value)
46. Cedarbrook Lumber Company – (\$15.00 Gift Certificate)
47. Free Large Farm Island Store Pizza – (\$15.00 value)
48. Healthy Connections – (\$15.00 Gift Certificate)
49. Stars & Stripes Windsock donated by Nord Lake Reflections – (\$14.00 value)
50. Whistling Wolf Mini golf – One adult/one child – (\$14.00 value)

51. Two rounds Mini –Golf – Traditions in Deerwood – (\$12.50 value)
52. Stereo Headset donated by Deepsystems – (\$12.00 value)
53. McDonalds – (\$10.00 Gift Certificate)
54. Rasley Oil Co. – (\$10.00 Gift Certificate)
55. Aitkin Bowling Lanes – (\$10.00 Gift Certificate)
56. McDonalds – (\$10.00 Gift Certificate)
57. Sports bag donated by Bremer Bank – (\$10.00 value)
58. Road Atlas & mug donated by Security State Ins. – (\$10.00 value)
59. T-shirt – “Buffalo Trace” – (\$8.00 value)
60. Shiperio Card Game of Golf donated by Shiperio games Chanhassen – (\$8.00 value)
61. Shiperio Card Game of Golf donated by Shiperio games Chanhassen – (\$8.00 value)
62. John Deere Baseball Cap donated by Northland Equipment – (\$7.00 value)
63. John Deere Baseball Cap donated by Northland Equipment – (\$7.00 value)
64. John Deere Baseball Cap donated by Northland Equipment – (\$7.00 value)
65. John Deere Baseball Cap donated by Northland Equipment – (\$7.00 value)
66. Aitkin County Naturally – (\$5.00 value)
67. Rand McNally 2013 Road Atlas
68. Rand McNally 2013 Road Atlas
69. Rand McNally 2013 Road Atlas

Return your tickets and money by December 6th, 2013

This year's raffle features a total of 89 prizes donated from local businesses collected by Boyd Bremner. When you see Boyd, please thank him for all the time and effort he put into collecting prizes for this project. Also, please thank all of the businesses that so generously donated items for our raffle by supporting them. We are having our best raffle ever. I would like to thank everyone who has supported this event by donating prizes, selling and buying tickets.

STRAWBERRY COOKIES

- 1 Eagle brand milk
- 1 can angle flake coconut (1 lb.)
- 2 pkg. strawberry jello
- Pinch of cream of tarter
- Pinch of salt

Take 1 ½ pkg. of jello and mix with milk and coconut. Add salt and cream of tartar. Let set in refrigerator at least an hour or overnight. Shape into berries and roll in balance of jello. Dye toothpicks green (break in half). Put three leaves of green frosting on each berry. Makes about 65, depending on size. I make more.

I roll them in red sugar instead of the jello. It makes them brighter. Leaves can be bought from Maid of Scandia instead of using frosting on the leaves.

From the kitchen of Margaret Leach

FRUIT CAKE

Cook 1 lb. seeded raisins 15 min. in 2 cups of water.

- | | | |
|-------------------|------------------------------------|-----------------|
| 1 cup fruit juice | 1 egg | 1 t. salt |
| 2 cups sugar | 1 t. cinnamon | 1 t. cloves |
| ½ cup butter | 4 cups flour | 1 pkg. currants |
| 1 t. soda | 1 lb. nuts | ½ lb. fruit mix |
| ½ lb. dates | 1 small bottle maraschino cherries | |

More “candied” fruits may be added.

Prepare fruit, cream butter and sugar. Add beaten Egg, add fruit juice and flour and dry ingredients. Add fruit to nuts. Bake in waxed paper lined loaf pans. Set pans in hot water for first hour of baking. Bake at 275 degrees for three hours.

From the kitchen of Margaret Leach

Helpful Hints

A pinch of salt added to very sour fruit while cooking will reduce the amount of sweetening needed.

Heat nuts before cracking and they will come out whole.

A teaspoon of vinegar added to frosting will prevent crumbling when cut.

More Helpful Hints

Mix fruit juice instead of water in the pie crust for a new and delicious taste.

To keep cake fillings from soaking into cake, sprinkle layers lightly with powdered sugar before spreading on filling.

FRUIT SLICES

From the kitchen of
Kay McLeod

1 ½ Cups Brown Sugar
2 tsp. Baking Powder
1 Cup Shortening
1 Cup Raisins
2 Eggs
1 Cup Nuts
½ Cup Milk
4 Cups Flour

Mix ingredients together and roll out one inch thick. Flatten out with hands. Bake, frost and slice. You may add dates, candied cherries & pineapple.

LIFE BEFORE THE COMPUTER

- Memory was something that you lost with age.
- An application was for employment
- A program was a TV show
- A cursor used profanity
- A web was a spider's home
- A virus was the flu
- A keyboard was a piano
- A CD was a bank account
- A hard drive was a long trip on the road.
- A mouse pad was where a mouse lived.
- And if you had a 3 ½ inch floppy...you just hoped nobody found out!

LOL

CRANBERRY MUFFINS

- 3 T. butter
- 1 Cup sugar
- ½ cup water
- ½ cup Carnation milk
- 2 cups flour
- 1 t. salt
- 2 t. soda
- 2 cups raw cranberries

Put in 9X12 inch pan or muffin papers. Bake at 350 degrees for 25 minutes.

BUTTER SAUCE

- ½ cup butter
- 1 cup sugar
- ½ cup Carnation milk
- 1 t. vanilla

Bring to a boil, remove from heat and serve over muffins.

From the kitchen of Helen Leach

MUSEUM VISITORS

	<u>2011</u>	<u>2012</u>	<u>2013</u>
January	40	40	86
February	22	55	29
March	23	187	99
April	48	153	48
May	50	100	110
6th Graders	101	91	91
June	472	183	127
July	266	356	251
County Fair	1171	0	1500
August	214	202	248
Garage Sale	0	1814	1723
September	128	118	132
Rendezvous	0	1077	0
October	75	72	92
November	93	41	0
Open House	83	71	0
<u>December</u>	<u>48</u>	<u>50</u>	<u>0</u>
	2834	4610	4536

MEMBERSHIP NOTICES

Our year runs from June 1st to May 31st. Notices have been sent out to all members separate from this newsletter. Some members have paid for several years at a time so they will not receive a notice. Your membership fees help to pay all of our museum and society operating expenses. (Heating & Air Conditioning three buildings, Postage, Advertising, Security, office supplies, memberships, maintenance, telephone, janitorial services, rentals, displays, collections/archival, fire protection, accountant fees and wages.) As various events are cancelled or hampered by weather our memberships become a more important part of our continued survival. In the beginning of 2009 our membership was at 236 members. Our current membership now stands at 409. My goal is to surpass 420 by the end of this year and 472 by the end of next year. Membership is the key to our continued survival. **If you have not renewed your membership yet, please do so now! Our survival depends on it.**

Board of Directors: Darlene Maciej (President), Cheryl Meld (Vice-President), Colleen Bremner (Secretary), Jon Jacobson, Alice Dotzler, Connie Pettersen, Pat Williams, Arlene McNevin, Susan Benson, Carol Bailey, Ron Kemmett, John Hendrickson, Bob Lake, Lorraine Liljenquest, Mark Wedel (County Commissioner), Sherry Arvidson (Accountant), Greg Leach (Administrator)

AITKIN COUNTY HISTORICAL SOCIETY MEMBERSHIP

Business Members – 36, Individual Members – 28, Senior Members – 104, Family Members – 222,
Life Members – 17, Perpetuity Members – 2
TOTAL MEMBERSHIP – 409

BUSINESS MEMBERS

Aicota Health Care Center
Aitkin Body Shop
Aitkin Chamber of Commerce
Aitkin County Abstract Company
Aitkin Family Chiropractic Center
Aitkin Flowers & Gifts
Aitkin Furniture & Carpet
Aitkin Independent Age
Aitkin Iron Works
Aitkin Lodge #164 IOOF
Aitkin Motor Company
American Legion Post 86
Arvidson Tax & Accounting
Blakesly Appliance Service & Repair
Christensen Law Office
Crosby Eye Clinic
Enberg TV
Eyecare Center of Aitkin & McGregor
Garrison Disposal
Gobles Sewer Service
Gravelle Plumbing & Heating
Hasskamp Brox. Well Drilling
Hometown Building Supply
Hudrlik Carpet
K & J C-Stores, Inc.
KKIN-KEZZ Radio
Lundberg Plumbing & Heating
Members Coop Credit Union
Mille Lacs Energy Cooperative
Paulbeck's County Market
Peoples National Bank
Red Door Resort & Motel
R & K Cabinets
Security State Bank
Sunset Bay Resort
Tidholm Productions

SUPPORTING BUSINESSES

Aitkin Bowling Lanes
Aitkin Dairy Queen
Aitkin EZ Stop
Aitkin Flowers & Gifts
Aitkin Furniture
Aitkin Glass
Aitkin Independent Age
Aitkin McDonalds
Aitkin Pet & Farm
Aitkin Rental
Bare's Bootery
Bill's Sportsmans Service
Birchwood Cafe
Brandl Motors
Bremer Bank
Cedarbrook Lumber
Coombs Cuts
Cross Woods Golf Course
Cuyuna County Auto
Cuyuna Lanes
Cycle, Path & Paddle
Deep Systems
Duane's Photography
Emily Greens Golf Course
Enberg TV
Farm Island Repair & Marine
Farm Island Store
40 Club/Players
Freedom Gas Station
Garrison Disposal
Grand Casino Mille Lacs
Gravelle Plumbing & Heating
Grandmas Pantry
Hawkeyes Inc.

SUPPORTING BUSINESSES

Healthy Connections
Hometown Building Supply
Hot Stuff Foods
Hyytinen Hardware
KKIN AM & FM Radio
Lake Country Auto & Tire Center
Lightning Motorsports
Lorries Hair Studio
Lundberg Plumbing
Mille Lacs Energy
MN Gold Buyers
Nordlake Reflections
Northern Air Heating & Plumbing
Northwood Equipment
The Office Shop
Paulbecks County Market
Rasley Oil
RDJ Products
Rialto Movie Theater
Ripple River Motel
Roadside Restaurant
Salon Inspire
Security State Bank
Security State Insurance
Sew Much & More
Shipero Games
Simply Chic
Thrifty White Pharmacy
Tire Barn
Traditions Mini Golf
Unclaimed Freight North
Whistling Wolf Mini Golf

SUPPORTING TOWNSHIPS

**FARM ISLAND TOWNSHIP
IDUN TOWNSHIP
LAKESIDE TOWNSHIP
CLARK TOWNSHIP
NORDLAND TOWNSHIP

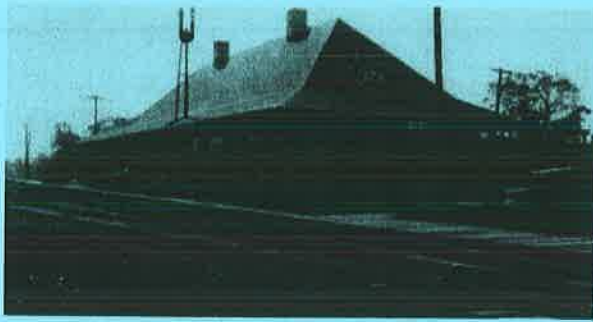
AITKIN COUNTY**

Members Lost During 2013

Ray Morris – 8/30/1930 to 1/12/2013
Kern Ridlington – 9/25/1926 to 3/23/2013
Marilyn Kullhem – 7/15/1933 to 5/24/2013
Jerome Poland – 1/21/1938 to 9/20/2013

New Members

Diane Baumann
Butch Tibbetts
Bryan & Karin McGinnis
Tom Arnold
Raymond G. Embertson
Joel & Teresa Hyytinen
John Mehaffey
Lee Hollingsworth
Ann Schwartz



"Aitkin Soo-Line Depot"

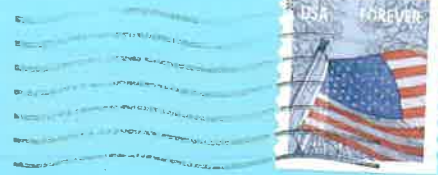
AITKIN COUNTY HISTORICAL SOCIETY
20 Pacific Street S.W. / P.O. Box 215
Aitkin, MN 56431

We are located just 2 blocks south of the stoplights in downtown Aitkin, south of the railroad tracks and west of highway 169.

Phone: 218-927-3348

Email: achs3348@embarqmail.com

Web Site: www.aitkinchs.org



OCT 31 2013

**Aitkin County
Board of Commissioners**
209 2nd Street N.W.
Aitkin, MN 56431

CALENDAR OF EVENTS 2013/14

Give to the MAX Day

November 14, 2013

A 24 hour event held on www.giveMN.org to raise funds for Minnesota non-profits. Check out the front page of this newsletter showing all the ways we could receive additional funding during this event.

Annual Open House/Cookie Walk/Raffle

December 7th – 9am to 4pm

Come and enjoy our last fundraiser of the year. Buy your holiday cookies, (\$3.00 a dozen) view our holiday display, and enjoy some free coffee, apple cider and cookies. Buy a book for that hard to buy for person on your list. Our "Barns of Aitkin County" book should be available.

Annual ACHS Meeting/Dinner

January 22nd 2014

JOIN ACHS TODAY!!

MUSEUM HOURS

June thru August

Tuesday, Wednesday, Friday &
Saturday 10am to 4pm

September thru May

Wednesday, Friday & Saturday
10am to 4pm

**THE PRESERVATION OF
OUR HERITAGE
DEPENDS ON YOU**

Editor: GREGORY LEACH