



Connecting Manitoba and Minnesota

October 9, 2012

J. Mark Wedel
Chair
515 6th Avenue SE
Aitkin MN 56431

RE: Great Northern Transmission Line Corridor Map

Dear J. Mark Wedel,

You recently received a letter with information about upcoming Open House Meetings for the Great Northern Transmission Line in northern Minnesota. A map showing the meeting locations and the Corridors is included in this mailing for your review.

We will be hosting Open House Meetings at eleven locations throughout the Corridors the weeks of October 29 and November 5, 2012. Please refer to the previous mailing for a list of meeting locations, dates, and times or visit our Project website at www.greatnortherntransmissionline.com. You are welcome to attend and share your feedback with the Project Team.

We appreciate your participation in the Great Northern Transmission Line and look forward to working with you. If you have questions or comments, please contact Jim Atkinson at (218) 355-3561 or jbatkinson@mnpower.com.

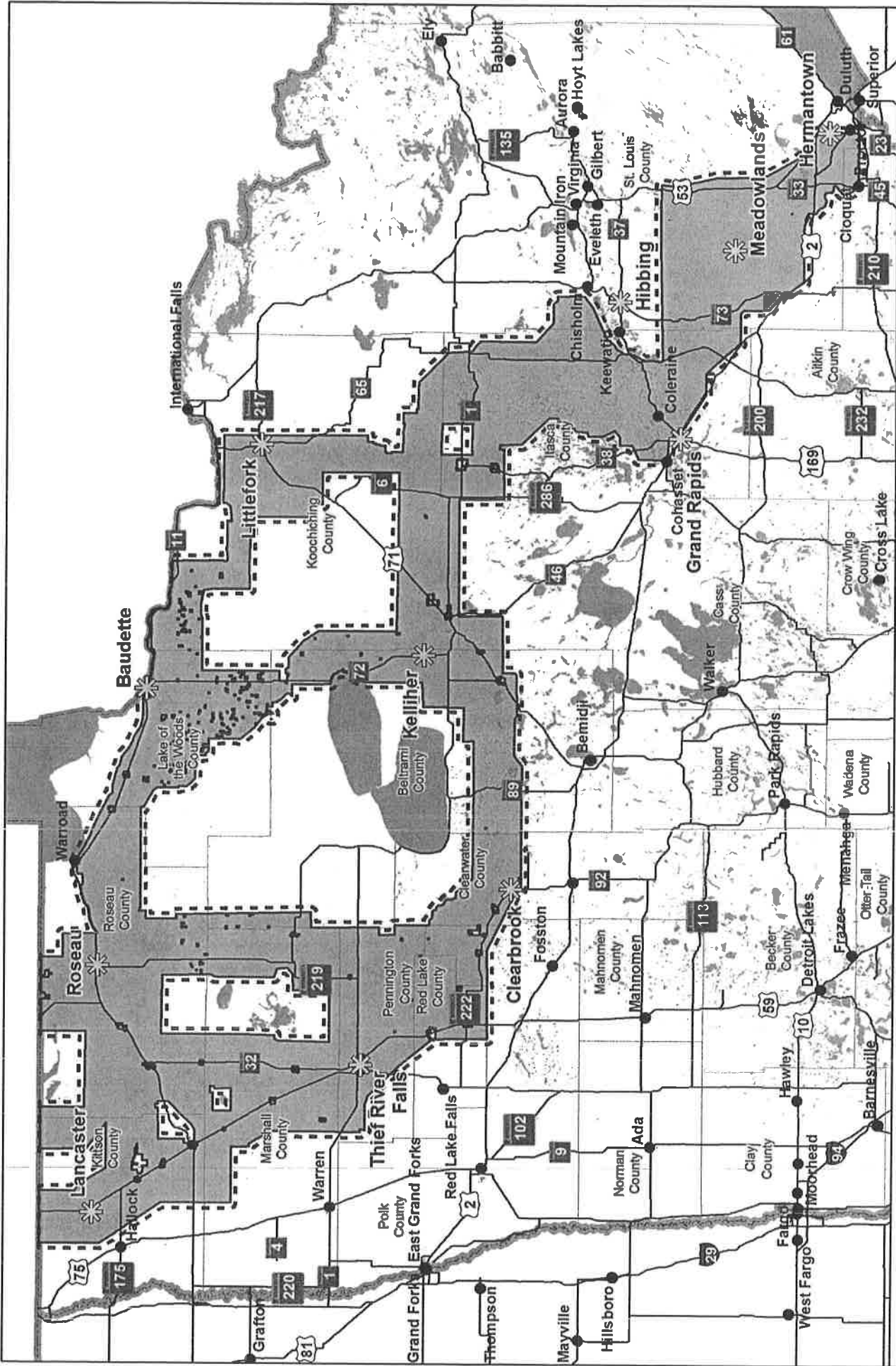
Sincerely,

A handwritten signature in black ink that reads 'Jim B. Atkinson'.

Jim Atkinson
Environmental Lead
Minnesota Power
jbatkinson@mnpower.com
Enclosures: Figure 1 - Corridor Map

A handwritten signature in black ink that reads 'Mike Donahue'.

Mike Donahue
Project Manager
Minnesota Power
mdonahue@mnpower.com



- Meeting Location
- Corridors
- Notice Area
- Waterbody
- State Boundary
- County Boundary
- City



Miles
 0 25

Monday October 29 th	Tuesday October 30 th	Wednesday October 31 st	Thursday November 1 st	Friday November 2 nd
	11:00 AM – 1:00 PM Centennial Hall 222 Central Avenue South Lancaster, MN 56735	11:00 AM – 1:00 PM Roseau Civic Center 121 Center Street E Roseau, MN 56751	11:00 AM – 1:00 PM Littlefork Community Center 220 Main Street Littlefork, MN 56653	11:00 AM – 1:00 PM North Beltrami Community Center 220 East Main St Kelliher, MN 56650
5:00 – 7:00 PM Clear Waters Life Center 256 2 nd Avenue SW Clearbrook, MN 56634	5:00 – 7:00 PM Ralph Engelstad Arena Imperial Rm 525 Brooks Avenue North Thief River Falls, MN 56701	No Evening Meeting	5:00 – 7:00 PM VFW Post 723 204 International Drive NE Baudette, MN 56623	

Wednesday November 7 th	Thursday November 8 th
11:00 AM – 1:00 PM Hermantown Government Services Bldg Training Center 5105 Maple Grove Road Hermantown, MN 55811	11:00 AM – 1:00 PM Hibbing Memorial Building Arena Downstairs Dining Room 400 East 23 rd Street Hibbing, MN 55746
5:00 – 7:00 PM Sawmill Inn – Blandin Rooms 2301 South Highway 169 Grand Rapids, MN 55744	5:00 – 7:00 PM Meadowlands Community Center 7758 Western Avenue Meadowlands, MN 55765

We appreciate your participation in the Great Northern Transmission Line and look forward to working with you. For more information, visit our Project website at www.greatnortherntransmissionline.com or call our Project information line at (877) 657-9934. If you have questions or comments, please contact Jim Atkinson at (218) 355-3561 or jbatkinson@mnpower.com.

Sincerely,



Jim Atkinson
Environmental Lead
Minnesota Power
jbatkinson@mnpower.com
[mailto:](mailto:jbatkinson@mnpower.com)



Mike Donahue
Project Manager
Minnesota Power
mDONAHUE@mnpower.com

Enclosures: Figure 1 - Corridor Map

October 3, 2012

J. Mark Wedel
Chair
515 6th Avenue SE
Aitkin MN 56431

RE: Upcoming Open House Meetings for Great Northern Transmission Line Project

Dear J. Mark Wedel,

Minnesota Power would like to inform you of the proposed Great Northern Transmission Line Project and the upcoming Open House Meetings in the Project Area. The Project will consist of a 500kV high-voltage transmission line from the Minnesota – Canada border to a receiving substation near the Iron Range and a double-circuit 345kV high-voltage transmission line from the Iron Range substation to the Arrowhead substation near Hermantown, Minnesota.

Within the last few months, the Project Team met with agencies and key stakeholders, collected resource data, reviewed engineering considerations, and conducted field reviews in an effort to develop Corridors within the Project Study Area. In general, Corridors were developed based on the comments received and by considering the following:

- Existing rights-of-way (transmission lines, pipelines, railway, or roads), survey lines, and natural division lines
- Impacts to populated areas
- Impacts to sensitive environments
- Impacts to public and private airports
- Length

We are seeking any information related to the Corridors to assist the Project Team in identifying opportunities and constraints for the location of the proposed transmission line. If your jurisdiction is now outside the Corridors, we appreciate your feedback to date and we welcome any additional thoughts you have on the project development. A map of the Corridors has been provided for your review.

We will be hosting Open House Meetings at eleven locations throughout the Corridors the weeks of October 29 and November 5, 2012. The following tables provide detailed information for each of the Open House Meetings. You are welcome to attend and share your feedback with the Project Team.



River Time

Protect, restore and celebrate the St. Croix River and its watershed.

Peter Gove, **Chair**
Gary Noren, **Vice Chair**
Dan Willius, **Past Chair**
Mike Prichard, **Treasurer**
Karen Hansen, **Secretary**

Board Members:

Melanie Kleiss Boerger
Paul Bourget
Bill Clapp
Jerry Dörff
Randy Ferrin
Dave Ferris
David Griffith
Steve Hobbs
Jean Hoffman
Steve Johnson
Verna Kragnes
Sally Leider
Thomas Polasik
Tom Triplett
John Velin
Wendy Williamson

Staff:

Julie Hildebrand
Tracy Maki
Deb Ryun
Monica Zachay



Photo by Gary Noren

View From the Chair by Peter Gove, Chair

In my July column, I mentioned a National Parks Conservation Association (NPCA) meeting earlier in 2012 focused on budget challenges facing the National Park Service (NPS). I came away from that meeting dismayed about the impact of the continuing federal deficit and spending debates on the National Park System. The NPS budget *represents less than one-thirteenth of one percent of the federal budget*. National parks including the St. Croix National Scenic Riverway – **our national park in the St. Croix Valley** – are slowly but progressively being tarnished, caught in the middle of this debate. Yet National Parks have the overwhelming support of the American public and generate at least \$4 in economic value for each dollar invested.

SCRA Board Vice Chair Gary Noren, Ex. Director Deb Ryun and I met recently with Minnesota Congresswoman Betty McCollum to discuss challenges facing the St. Croix River and how the association is supporting the NPS’s stewardship of this nationally recognized river landscape. Rep. McCollum represents a segment of the St. Croix River to north of Stillwater. She is a member of the powerful House Appropriations Committee, and, the Interior Subcommittee with jurisdiction over the NPS, Forest Service and EPA. She is the only member of the Minnesota or Wisconsin congressional delegation on the Appropriations Committee.

We are so fortunate to have Cong. McCollum representing the St. Croix watershed in Congress. She has been—in the tradition of her predecessor, the late Bruce Vento—a champion of our nation's wilderness and public lands and has helped lead the fight against efforts to overturn decisions by the Obama Administration to

restore wise stewardship over these national treasures.

We discussed with Congresswoman McCollum and her staff NPS budget trends that, unless reversed, will cripple the ability of the Park Service to protect, maintain and interpret the Riverway; a major investment by U.S. taxpayers in this magnificent but fragile river landscape. The Riverway budget in the current fiscal year is the same as 5 years ago with less flexibility to provide visitor services and interpretation. Three key senior management positions are unfilled. The Marshland visitor center is closed. The maintenance backlog is growing. If further budget cuts occur at the end of this year (8% of the NPS budget), there will be no seasonal rangers in the summer of 2013, further reduction in programs, etc. at a time of increased Riverway visitation, more interest in interpretative programs and growing concerns over aquatic invasive species.

“National parks face severe funding crunch” was the title of a recent article in The Washington Post (see a link to this article on the SCRA website) that said in part, “After more than a decade of scrimping and deferring maintenance and construction projects—and absorbing a 6% budget cut the past two years—the signs of strain are beginning to surface at national parks across the country.” The article quoted NPCA President Tom Kiernan, “It’s clear that inadequate federal funding is the number one threat to the future of the national parks and the national park idea... We’re at a crossroads of historic importance here.”

Continued on page 2

Linking Forestry to Water Quality by Monica Zachay, River Protection Steward

When one thinks of forests perhaps the majestic white pine come to mind, or maybe it's the sugar maple in full fall color. As you paddle down a favorite stretch of river, forests offer cooling shade and fantastic scenery. Forests provide many products and services: trails for hiking on a peaceful day, a place to patiently hunt plentiful game, air purification, lumber, toilet paper, the list goes on. But have you considered how forests impact water quality and river protection?

The SCRA is working with partners from both states to explore the connections between forests and water quality. The U.S. Forest Service has provided this grant which we seek to take an in depth look at the current state of the forests in two northern sub-watersheds and how the landscape has changed over time. The goal is to quantify how forested land protects the St. Croix watershed, and provide the findings to resource managers and private landowners. We'll host several workshops on forest management strategies for water quality protection, in collaboration with local conservation agencies.

The newly completed Lake St. Croix Total Maximum Daily Load study

shows that the largest contributors to phosphorus loading in the watershed are agricultural lands, point source pollution, and urban/residential areas. In fact the numbers show that agricultural lands and urban areas contribute over 80% more phosphorus than forest lands to Lake St. Croix. So if forest lands are not big contributors to poor



water quality, why should we care?

The upper portions of the St. Croix watershed are scattered with small acreages of marginal agriculture lands that were once dairy farms and pasture lands. As the prices for corn and soybeans increase, the risk of these lands and forest lands, being converted into more intensive row crop farming also increases. This project will

explore the water quality value of protecting forests from being converted to agriculture and the benefits of reforesting marginal agriculture lands.

The projects primary focus area is the Kettle River watershed in Minnesota, and the Yellow River watershed in Wisconsin. A landscape stewardship plan will be developed for each of these St. Croix subwatersheds. It will address the current forest resources, forest health and development risks, and provide a list of best known management practices for these areas.

The grant provides for a few demonstration sites, to encourage sound forest management practices that protect and promote water quality. Partnering with agencies such as Soil and Water Conservation Districts,

County Land Departments, the Natural Resource Conservation Service, and Minnesota and Wisconsin Department of Natural Resources, the SCRA will use the demonstration sites to offer trainings to private forest landowners for the education of better forest management for water quality.

If you'd like to learn more about this project don't hesitate to contact me at monicaz@scramail.com.

While progress should never come to a halt, there are many places it should never come to at all.

Paul Newman

View From the Chair continued from front page

SCRA will soon communicate with the four U.S. Senators and six Members of Congress who represent the St. Croix watershed on this important topic and request their commitment—regardless of political persuasion—to support 'America's Best Idea', our national park system

including the St. Croix National Scenic Riverway. See our web site on how SCRA members and supporters can engage in this campaign to safeguard the Riverway. There is no bigger challenge for the SCRA as a watershed advocate for the St. Croix River.

Autumn Makes Me Smile

by Dan Willius, Past Chair

Why does autumn always put us in such high spirits? Is it because it engages each of our senses — sight, touch, sound, smell and taste — in such unique and wonderful ways?

No doubt, eye-popping colors top the list of the season's gifts. It is late morning on a classic, clear, crisp autumn day. To savor the colors, my son Matthew and I are paddling upriver, our goal the impressive cliffs at Rock Island, not far upstream from the Franconia landing.

While the St. Croix's floodplain forest has begun its slow fade from summer's green to a drab, lifeless grey, the bluffs above are a patchwork of glorious colors. Yellows dominate ranging from those that are pale and green-tinged to those that radiate sunset gold. Here and there is the pumpkin orange of maple, the cranberry red of oak, the toasted wheat of half-naked trees past prime. In stark contrast are the dark greens of scattered white pines and the backdrop of brilliant blue sky. In coming weeks an even wider array of colors will be woven into this diverse forest landscape: burgundy, bronze, mauve, mahogany, copper, terra cotta and rust.

To some people autumn tree color says it all. That's unfortunate because there is so much more to celebrate. Early this morning elongated wisps of vapor danced slowly, magically, everywhere across the mirror-like surface of the river, a sure sign of autumn's cooler air. Now, under a breeze and mid-day sun, water sparkles with effervescence. Fresh fallen, curled, dry leaves float by pushed this way and that by the wind, like so many tiny sailboats. In places the river bank is speckled with baby blue asters, a reminder that the valley's autumn wildflowers are a treasure in and of themselves.

By early afternoon we reach the cliffs, siblings of those at Taylors Falls a few miles upstream. Their origin dates back a billion years to a time when earthquakes from here to Lake Superior created monster lava flows which cooled into this super-hard, dark-grey basalt.

Today we are all alone as we study the cliffs' complex beauty. Their face is marked with crags, crannies, overhangs and fault lines slashing across this way and that. Oxidation of minerals in the rock has created three distinct shades of brown on grey. Here and there are wide brush strokes of pale green and rusty orange lichens. Several outposts of grey-green cedar peek out their existence in a hostile vertical environment.

I recall hiking with a boyhood pal to the top of these cliffs some sixty years ago. On hands and knees we carefully crawled to the edge. "Look!" he exclaims, holding up a perfectly shaped Native American arrowhead, perhaps a remnant of a long ago clash between Dakota and Ojibwe. Native oral history tells of a particularly bloody battle at nearby St. Croix Falls over two centuries ago, one of many in a decades-long struggle for control of the abundant food and fur resources in the St. Croix watershed.

On our return down-river, we stop paddling while we dwell on a unique sensation. The touch of cool, dry air is brisk and exhilarating on bare skin. Simultaneously the afternoon sun creates a radiant warmth deep within. Nothing epitomizes the feel of autumn for me better than this delightful contrast.

What about sound? In our neighborhood a signature sound of autumn is the din of hundreds, maybe thousands, of Canadian geese honking and hollering in the back sloughs which serve as rest stops on this busy flyway. They are joined in the journey by other migrating water birds: cranes, teal, snow geese, cormorants, terns, sandpipers, and more, all just passing through.

It is late afternoon by the time we reach journey's end. After securing the canoe we hike up through the woods toward home. In places the trail is covered with a blanket of new fallen, dry, crisp leaves. They crinkle and crunch underfoot - it's sounds as if we are tramping through piles of old, crumpled newspapers (or

perhaps a bowl of cornflakes). It's another sound unique to the season.

We pause to savor. An autumn forest has a subtle but distinctive aroma, herbaceous and vaguely sweet like newly sawn wood. I pick up a handful from the forest floor and roll it between my hands. The fragrance — earthy with hints of mushroom, tobacco and cedar — reminds me of a great, well-aged wine. It also conjures up childhood memories of evening smoke from burning piles of leaves in our neighborhood. It was a wonderful smell, indelible on the psyche.

A black squirrel darts across the trail, no doubt busy caching acorns for winter. Blacks are a subgroup of the Eastern Gray Squirrel. They likely were dominant throughout North America before the arrival of Europeans. Their dark color helped them hide in the virgin forests, dense and shaded. As time passed, hunting and deforestation led to biological advantages for their grey colored cousins.

The light of autumn's late afternoon sun, low in the sky, carries a special quality, a heart-warming ambiance. Even great photographers find it difficult to capture. Today it makes the colorful forest canopy glow, incandescent, as if lit from within. The trunks of the trees stand silently below, sentinel-like, receding up shadowy ravines. Here's another engaging contrast: above is light and airy, filled with translucent colors; below the grey, solid, vertical columns. It's a bit of a stretch but I imagine being in a great gothic cathedral.

We arrive home in time for supper and, finally, a taste of autumn. For me the quintessential taste is apple, in all its delicious variations: baked, butter, caramel, cider, crisp, sauce, and unpeeled, fresh-off-the-tree from our neighborhood orchard. Tonight what better way to celebrate the ample rewards of the season than a large slice of warm apple pie.

Autumn makes me smile.

Land on the Snake River Protected



The Minnesota Department of Natural Resources (DNR) announced that it recently acquired 405 acres of land owned by Robert and Alice Aanestad in Kanabec County in east-central Minnesota. The property is nestled between the Snake River and the 7,706 acre Snake River State Forest.

“This picturesque land will enable the state to protect an additional 1.8 miles of Snake River shoreline and enhance the Snake River State Forest, a working forest that provides for timber production, wildlife habitat and recreational activities,” said Dave Schuller, DNR Forestry Division lands program coordinator.

The property is strategically located in a large bend in the river, with state forest to the east and the Snake River bordering the rest of the property. It creates a natural boundary for the state forest, reducing the need to determine

property lines, thereby reducing management costs.

Wildlife benefitting from state protection and management of this property include white-tailed deer, black bears, gray and red fox, beavers and muskrats. The property will protect shoreline habitat for walleye, northern pike, small-mouth bass and catfish found in the Snake River, one of the few rivers in Minnesota that is also home to lake sturgeon. This significantly increases shoreline protection provided by the state forest from 12 miles to 14 miles. The additional 405 acres will provide expanded opportunities for hunting, fishing, paddling along undeveloped shoreline, hiking, bird watching and many other outdoor recreation activities.

The Aanestads acquired the property in the early 1970s. They received lots of interest from buyers who wanted to subdivide the property and build houses.

“We always had it in mind to see the land protected so everybody could have access to it,” said Robert Aanestad. “It’s a very beautiful property and it borders the Snake River. The DNR will accomplish our goal of keeping it in its natural state.”

This land acquisition was made possible through the use of Outdoor Heritage Funds provided by the Clean Water, Land and Legacy Amendment, and Reinvest in Minnesota (RIM). Match Funds made available through a grant match of donations provided by The Nature Conservancy (TNC), a nonprofit organization that helps protect lands and waters throughout the United States and in more than 30 countries.

The Nature Conservancy is thrilled to help DNR conserve a key piece of the Snake River. “The Snake River is a key tributary of the St. Croix River, and as a result it is important to the health of the Upper Mississippi River,” said Doug Shaw, the Conservancy’s assistant director. “The Snake is in very good natural condition and we need to keep it that way for wildlife, clean water, outdoor recreation and our economy.”

The DNR thanks the Aanestad family for their willingness to work with the department, the Lessard-Sams Outdoor Heritage Council for its support in using Outdoor Heritage Funds for the acquisition, and TNC for stepping in with funding through the RIM program. “It was a real team effort,” said Schuller.

More Volunteers Wanted by Melanie Kleiss Boerger, Chair of CEO Committee

If you have already sent in or submitted a volunteer application, thank you! You are instrumental in getting our new volunteer program off to a great start. After all, there would be no "volunteer program" if we didn't have volunteers. There are still many different volunteer opportunities to choose from, and new volunteer projects come in regularly. So if you're still thinking about getting involved, please fill out and submit a volunteer application form so that we can connect you with a project or contact you when your preferred opportunity comes up: www.stcroixriverassociation.org/volunteer-program. Thank you in advance!

Lake St. Croix TMDL Approved by Randy Ferrin, Past President

The United States Environmental Protection Agency recently approved the Total Maximum Daily Load (TMDL) for Lake St. Croix. Under the regulations of the federal Clean Water Act, Lake St. Croix was declared an impaired water in 2008 by the States of Minnesota and Wisconsin, requiring that a TMDL report be written. The impairment is caused by excess phosphorus going into the lake which enhances the growth of unwanted algae and thus changes the lake's ecosystem and water quality.

A TMDL is a restoration plan to achieve a particular water quality goal. The TMDL is a complex formula that sets a limit on the amount of phosphorus coming from regulated sources like sewage treatment plants and large cities, and unregulated sources such as lawns, rural communities, and farm fields. A margin of safety and a growth factor are built into the formula.

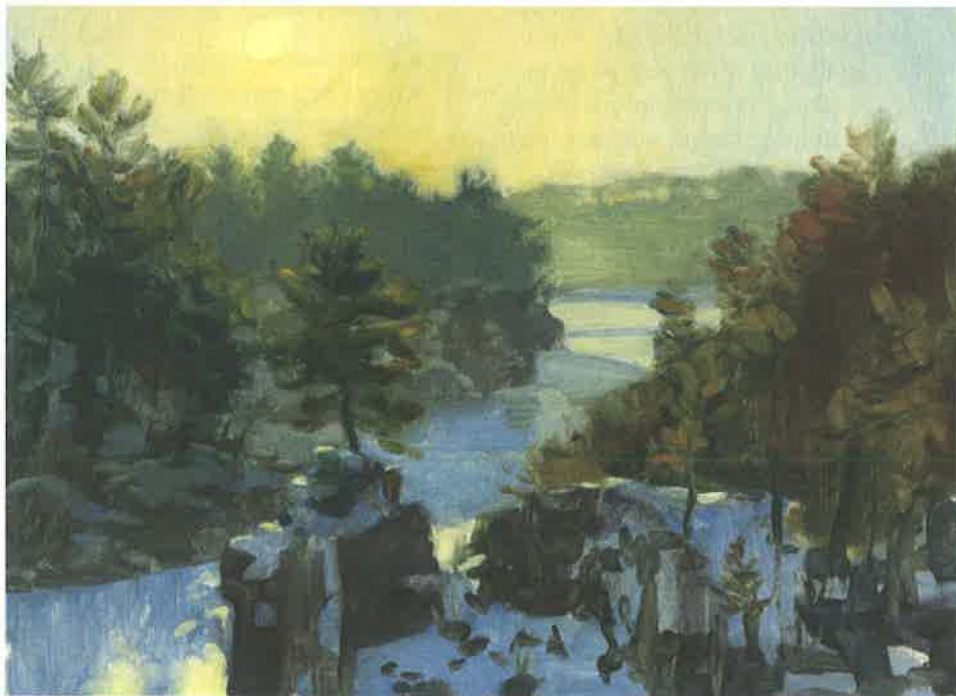
The TMDL was developed by the Minnesota Pollution Control Agency in conjunction with the Wisconsin Department of Natural Resources. The St. Croix Basin Water Resources Planning Team (The Basin Team) provided technical oversight and review. The Basin Team is a coalition of state, federal, county, and nonprofit organizations including, the St. Croix River Association, and has been in existence since 1993. The Basin Team provided the technical data used in determining that Lake St. Croix was impaired. In 2004, the Basin Team set a phosphorus reduction goal of 20 percent by the year 2020. The two states agreed on that goal and signed a nutrient reduction agreement in 2006. This agreement laid the foundation for the TMDL work.

To achieve the restoration plan called for in the TMDL will require reducing phosphorus going into Lake St. Croix

from the river's 7600 square mile watershed. Over one hundred tons will be need to remain in the fields, lawns, and treatment plants to reach the goal.

An Implementation Plan was recently completed that shows where that reduction will need to occur, by county and by tributary watershed. Much of the reduction will need to be by voluntary actions of land owners and farmers. Although the target of the TMDL is to improve Lake St. Croix, many other lakes and streams in the St. Croix Basin will be improved through this work. An educational campaign will be essential in providing the tools and knowledge to assist this effort. For more information, check the links at the SCRA website or go to the MPCA website.

A Second Year of Beautiful St. Croix River Holiday Cards



You may not have heard that SCRA sold its first line of holiday cards last fall. It was a last minute idea, almost a whim. They featured a beautiful winter photograph by Gary Noren. We did not even have time to set up online ordering. Expecting it to be just a trial run, we were surprised that enough cards sold to not only cover costs but even raise some funds. This year we are excited to offer a second edition of SCRA holiday cards. You will have two card styles to choose from — another stunning winter image by Gary Noren, and a painting titled *Interstate State Park* by artist Eric March.

Online ordering is available now!

Message inside: Wishing you health, comfort, and happiness this holiday season.

Give a Gift to the River and a Friend



People are buying this book! SCRA in collaboration with local photographer and author Paul Clark, has offered a book called “*Images of the Saint*

Croix River” to our members and the public. In addition to images of the river, its backwaters, source and confluence, included are photographs of flora, fauna, river towns, and crossings. The book can be viewed on-line through the SCRA website. Copies of the book will be displayed at several local establishments that will be listed on our website. This includes our office in St. Croix Falls.

Two versions of the book are available; a soft cover and a coffee table hard cover. Included in the book is a section written by Vice-President

Walter Mondale reflecting on the Wild and Scenic Rivers Act and protecting the St. Croix. Mr. Mondale and Mr. Clark have agreed to autograph copies of the hard cover book. The book will make a very special gift or serve as a spectacular adornment to your coffee table. Proceeds from the book will go to the SCRA to further the work of protecting and preserving the St. Croix.

Order your book before November 23 to receive in time for Holiday giving. *A special thank you goes out to Mr. Clark and Mr. Mondale.*

Let Your Voice Be Heard—Vote!

Most of you are probably really tired of all the political ads and rhetoric. People are bombed with radio, TV and print media, phone surveys, road signs; it's no wonder people become cynical and avoid anything to do with politics and campaigns.

But is it the right thing to do? As we approach the November elections, your voice matters, more than ever. The trouble with the average person stepping out of the process is only the extreme voices get heard. And how many people are out there speaking for your national park and the benefits they bring to the area, or water quality, or habitat protection. With the economy still struggling, appropriately it's always one of the top topics, there is no shortage of hot air about jobs. Why not share your thoughts about what it means to have a national park in your backyard, and how it impacts life?

The most important thing you can do as a citizen of a free country is participate. The simplest thing to do is vote. Learn what each candidate really stands for, not just the sound bites you hear from the press, but spend a little time to see if candidates represent your vision for leading the state and country. **PLAN TO VOTE!** Second, share

your ideas. It's about so much more than economy, education and healthcare (not to mention those divisive issues). If you believe our natural resources need to be protected, candidates need to know.

What you can do?

1. Attend coffees and local meetings your elected officials hold. Meeting in district is the best place to get their ear. Your opinions matter, these folks represent you and they honestly want to hear from you.
2. Participate in candidate forums. Typically candidates allocate time to tell you what they want you to know *and* time for the audience to ask questions or state concerns.
3. Call them or send an email. They are people, just like you and me. They listen. If they only hear from one side they can only assume that is public sentiment.
4. Become their expert on the topic you care most about. These folks have to be “experts” on everything. Guess what? They aren't and they look for people who they can trust to help them with issues they are less informed about.

5. Ask substantial questions, on topics important to you.
6. Know the topic well enough to understand if you're addressing the right candidate. If you are talking with a state candidate about a federal program, there is little they can really do.

Some examples of topics:

- Asian Carp and other invasive species are a real threat to our river. We need research to help find solutions to control invaders.
- Water quality and quantity should continue to be discussed at the highest levels. Water isn't a resource people can live without.
- Economic growth is vital but should not come at the expense of our natural resources.
- Support ‘America's Best Idea’, our national park system including the St. Croix National Scenic Riverway. Share with candidates your personal story.
- Pass a Farm Bill with a strong conservation title.

VOTE

Are You A Member or Just Think You Are? by Tracy Maki, Development Director

We need you! Growing the St. Croix River Association membership is important and your \$25 annual gift matters to us. If you have not given in the last 12 months, you are not a member. If that sounds like you, stop reading NOW and fill out the form below. Oh, alright, let's do some background...and then you can join!

You may know the basic history of SCRA, but let's take a peek back. Founded in 1911, SCRA is the oldest citizen organization in Minnesota. For nearly 100 years it was a volunteer stewardship organization. In 2008, with the St. Croix's waters deemed "impaired" by phosphorous pollution and development forever changing landscapes, it was clear that more needed to be done. With support from community leaders, nonprofits and government agencies across the St. Croix basin, SCRA stepped up to become what is needed: a "go to" organization focused specifically on the river and its life sustaining watershed in Minnesota and Wisconsin.

It has been an incredibly busy and productive four years. Our work has

been so effective that Minnesota Philanthropy Partners recently rated us a "High Impact Startup Nonprofit."

With a watershed-wide focus we have: Secured more than half a million dollars for water improvement projects. Engaged thousands of citizens and dozens of communities in our annual paddling, clean up and educational events. Taken the lead on partnership efforts that will protect and restore the St. Croix's forestlands, habitat and water.

Two specific examples, just this summer, include our Asian Carp educational outreach and our land protection project. The nasty carp or "alien invaders" are swimming closer, threatening what is estimated, on the low end, to have a \$25 million (yes, MILLION) dollar economic impact on our recreational boating and fishing. SCRA teamed up with the National Park Service to distribute posters and watch cards to marinas and boaters. We now have many sets of eyes watching for signs of Asian Carp.

Near Hayward, WI, Springbrook

Wayside, a popular public access point to the Namekagon River, was in danger of being shut down. Our fundraising campaign raised the dollars to keep this 5 acre parcel, with 460 feet of Namekagon River shoreline, OPEN. In order for people to enjoy and recreate in the riverway, they need to get to it, don't they?

It's a simple proposition. You support us, we do the work. And there is much to be done to keep our riverway accessible and open to all. We live near a resource that has something for everyone. How great is that? Boating, waterskiing, tubing, stand-up paddling, kayaking, canoeing, fishing, swimming, floating, gazing...what would you add to this list? I guarantee you're not going to dip a toe in if there is scummy, green slime swirling around, resulting from too much phosphorous. I guarantee you will not wet a line if the Asian Carp take over (because they will decimate the fishing). We can't do this alone. We need you.

Now, about that membership...

BE A RIVER SUPPORTER! ONE RIVER, ONE FUND

Thank you for your annual gift to SCRA through the St. Croix River Fund!



Donations to the St. Croix River Fund are tax deductible to the full extent of the law. You will receive a receipt for your donation.

- _____ \$5,000 and above St. Croix River Keeper
- _____ \$2,500 to \$4,999 St. Croix River Champion
- _____ \$1,000 - \$2,499 St. Croix River Steward
- _____ \$500 - \$999 St. Croix River Guardian
- _____ \$50 - \$499 Friend of the St. Croix River
- _____ \$25 - \$49 Basic Level

Donors of \$25 or more receive a one-year St. Croix River Association membership unless they opt out here. _____

Checks are payable to:
St. Croix River Fund
516 Second Street, Suite 214
Hudson, WI 54016

Make an immediate and secure donation online via PayPal at www.stcroixriverfund.org.

Name (s) _____

Address _____

City _____

State _____ Zip code _____

Email: _____



Discover
Protect
Enjoy

Optional I want to designate my gift to: _____ St. Croix River Association _____ National Park Service River Fund



PO Box 655
St. Croix Falls, WI 54024
Phone: 715-483-3300
www.stcroixriverassociation.org

Nonprofit
Organization
U.S. Postage
PAID
St Croix Falls, WI
Permit No. 178

RETURN SERVICE REQUESTED

Become a member join now!
County Administrator
Patrick Wussow
217 2nd St. NW, Rm. 130
Aitkin, MN 56431

OCT 15 2012

5643181272 0002



Philip Schwarz SCRA Photo Contest 2nd Place Winner, Adult Wildlife - Sandhill Cranes at Sunrise

SCRA Founders Circle

“Founders Circle” members made a substantial financial commitment as we moved toward our second century, with an expanded mission of river and watershed wide advocacy. Thank you for believing in SCRA and our mission to protect, restore and celebrate the St. Croix River and its watershed.

Marcia R. Berkley, Jane & John Borehert Family, Sharon & Bill Clapp, the Cowles Family, Vivian & Robert Dunbar, Susan Ferron & David Stephens, Mary & Peter Gove, Karen & Craig Hansen, Marty Harding & Gary Noren, Esther & Martin Kellogg, Jennifer Gross & Jerry LeFevre, Sally & Richard Leider, in honor of Walter Mondale, in honor of Gaylord Nelson, Lyne & Mike Prichard, George M Reid, Lee Lynch & Terry Saario, the Silha Family, Taylors Falls Recreation, John Velin and Jane Harper, the West Family, Ruth Ann & Dan Willius



McGREGOR ISD 4

P.O. Box 160

148 South 2nd Street • McGregor, MN 55760

www.mcgregor.k12.mn.us

PH: (218) 768-2111 FAX: (218) 768-3901

October 7, 2012

OCT 11 2012

Residents of the McGregor School District:

On November 6, 2001, taxpayers in the McGregor School District were asked to vote on a \$1.00 per pupil unit excess operating levy. The voters supported the school district and passed the referendum. The referendum was in effect for 10 years. The levy authority expired in 2011.

Last year, we missed the deadline to ask voters to renew this levy authority. Therefore, this year at the general election November 6, 2012, we will once again be asking voters to vote on \$1.00 per pupil unit excess operating levy. This referendum qualifies us for additional revenue if taxpayers approve. The minimal referendum will raise \$510 in tax dollars but, more importantly, it will qualify the school district for over \$29,000 in state equity revenue. Equity revenue is funding that helps districts with a majority of residential property keep up with districts that have large commercial or industrial tax bases.

A \$1.00 operating levy has a very minimal effect on local taxpayers. As you can see in the chart below, school taxes on property valued at \$100,000 will be increased by \$.16 cents per year for the operating levy portion and \$9.49 per year for the equity levy portion.

2012 Market Value	Operating Levy Estimated tax increase	Equity Levy Estimated tax increase
25,000	.04	2.37
50,000	.08	4.74
100,000	.16	9.49
125,000	.20	11.86
150,000	.25	14.23
200,000	.33	18.98

The \$1.00 operating levy would replace the \$1.00 operating levy that voters approved in 2001.

The additional \$29,000 in equity revenue that the district would receive would be used to maintain programs for our students and help with increasing transportation and capital related costs.

Taxpayers in the McGregor School District will be asked to vote on this excess operating levy on November 6, 2012. The \$1.00 levy would be for ten years. The election will be held in conjunction with the local state elections at polling places determined by Aitkin County. A sample ballot appears below.

Please contact me should you have questions regarding this referendum. I can be reached at 768-2111, ext. 226, or at pgrams@mcgregor.k12.mn.us.

Sincerely,

Paul Grams, Superintendent

PAUL GRAMS

SUPERINTENDENT / PRINCIPAL

Ext. 226

pgrams@mcgregor.k12.mn.us

BOB STASKA

PRINCIPAL

Ext. 235

rstaska@mcgregor.k12.mn.us

SHAUNA DALCHOW

BUSINESS MANAGER

Ext. 223

sdalchow@mcgregor.k12.mn.us

SCHOOL DISTRICT QUESTION BALLOT
INDEPENDENT SCHOOL DISTRICT NO. 4
MCGREGOR SCHOOL DISTRICT
SPECIAL ELECTION
NOVEMBER 6, 2012

To vote for a question, put an (X) in the square next to the word "YES" for that question.
To vote against a question, put an (X) in the square next to the word "NO" for that question.

SCHOOL DISTRICT BALLOT QUESTION 1
APPROVAL OF SCHOOL DISTRICT
REFERENDUM REVENUE AUTHORIZATION.

The board of Independent School District No. 4 McGregor has proposed to increase its general education revenue by \$1.00 per pupil. The proposed referendum revenue authorization would be applicable for 10 years unless otherwise revoked or reduced as provided by law. **

YES

Shall the increase in the revenue proposed by the board of Independent School District No. 4 be approved?

NO

** BY VOTING "YES" ON THIS BALLOT QUESTION, YOU ARE VOTING FOR A PROPERTY TAX INCREASE.

McGregor

INDEPENDENT SCHOOL DISTRICT #4

OPERATING REFERENDUM Tuesday, November 6, 2012

www.mcgregor.k12.mn.us

Operating Levy Referendum - What is it?

- An operating levy referendum is a procedure which allows, with voter approval, school districts to raise additional revenue to supplement regular state education funding... also called a Referendum

What is the District Asking?

- The District is asking to adopt a new operating levy referendum
 - Adopt a new operating levy referendum for 10 years commencing with taxes payable 2013, which will request \$1 per pupil unit
 - The question provides approximately \$30,000 of equity and operating revenue per year

Why this request?

- The previous operating referendum expired after taxes payable in 2011 resulting in a loss of operating and equity revenue for taxes payable in 2012
- Without the adoption of the new referendum the district will be forced to reduce its expenses accordingly

What will the Dollars be used for?

- To continue to offer small class sizes
- To maintain facilities
- To continue to offer quality programs
- To provide access to technology

Referendum Property Tax Information

- Almost all types or classifications (i.e. Homestead Residential, Commercial/Industrial, etc...) of property are taxed the same based on their specific value (see the value on your property tax statement)
- Agricultural property beyond the house, garage, and one acre of land (also called DWELLING VALUE) is NOT taxed for this referendum
- Lake homes/cabins are NOT taxed for this referendum unless it is your primary residence

District Contact Information

- Shauna Dalchow, Business Manager
(218) 768-2111 x223

School Board Members

Larry Doten, Chairperson
Eric Kulju, Vice - Chair Nate Jackson, Director
Mike Kruse, Treasurer Julie Orbeck, Director
Angela DeWitt, Director Heather Sorenson, Director

School District Facts

- Square Miles Served - 804
- Employees (Full and Part Time) – 51 Full Time, 21 Part Time
- Current Enrollment – 363
- Annual Revenue Budget – \$6,012,029

School Ballot Question

SCHOOL DISTRICT BALLOT QUESTION 1
APPROVAL OF SCHOOL DISTRICT
REFERENDUM REVENUE AUTHORIZATION

The board of Independent School District No. 4 (McGregor) has proposed to increase its general education revenue by \$1.00 per pupil. The proposed referendum revenue authorization would be applicable for ten years unless otherwise revoked or reduced as provided by law.

- YES Shall the increase in the revenue proposed by the board of Independent School District No. 4 be approved?
- NO

BY VOTING "YES" ON THIS BALLOT QUESTION, YOU ARE VOTING FOR A PROPERTY TAX INCREASE.

What will the operating referendum levy cost?

2012 Market Value	Operating Levy Referendum Request	Equity Levy Change because of Operating Referendum	Net Impact
25,000	0.04	2.37	2.41
30,000	0.05	2.85	2.90
40,000	0.07	3.80	3.87
50,000	0.08	4.74	4.82
60,000	0.10	5.69	5.79
70,000	0.11	6.64	6.75
80,000	0.13	7.59	7.72
90,000	0.15	8.54	8.69
100,000	0.16	9.49	9.65
125,000	0.20	11.88	12.06
150,000	0.25	14.23	14.48
200,000	0.33	18.98	19.31

Initial Public Meeting

Site One To Be Determined
Date and Start Time

Site Two To Be Determined
Date and Start Time

The District will be posting this information at a later date



Aitkin County Sheriff's Office
217 Second Street NW, Room 185
Aitkin, MN 56431
(218) 927-7435
Incident Date Reported BETWEEN 10/10/12
And 10/16/12
And Incident NCIC=MN0010000

Printed On: Thu, Oct 18, 2012

Incident Log Report

<i>Case Number</i>	<i>NCIC</i>	<i>Date Reported</i>	<i>Officer</i>	<i>Offense</i>
2012004184	MN0010000	10/10/2012 06:34	256	Alarm
<i>Location</i> 215 3RD ST SE, Aitkin, 0100				
2012004185	MN0010000	10/10/2012 06:41	218	911 call false
35960 405TH ST, AITKIN, 3635				
2012004186	MN0010000	10/10/2012 08:45	208	Civil matter
21226 GOSHAWK ST, McGregor, 3906				
2012004187	MN0010000	10/10/2012 10:44	255	Animal Complaint
138 5TH ST NW, Aitkin, 0100				
2012004188	MN0010000	10/10/2012 11:33	208	ATL/Welfare Check
36974 320TH ST, AITKIN, 2410				
2012004189	MN0010000	10/10/2012 12:14	261	Warrant Arrest
Hill City, 0200				
2012004190	MN0010000	10/10/2012 13:33	MCFR	Ambulance Call
19401 134TH LN, MCGRATH, 5450				
2012004191	MN0010000	10/10/2012 14:29	261	Disturbance
500 IONE AVE NW, HILL CITY, 0200				
2012004192	MN0010000	10/10/2012 15:42	225	Accident
2933				
2012004193	MN0010000	10/10/2012 18:01	224	Probation Violation
52074 181ST PL, MCGREGOR, 5134				
2012004194	MN0010000	10/10/2012 18:58	995	Ambulance Call
650 2ND ST NE, Aitkin, 0100				
2012004195	MN0010000	10/10/2012 22:21	498	Accident
4426				
2012004196	MN0010000	10/10/2012 22:33	212	Suspicion Complaint
42121 250TH LN, AITKIN, 1722				
2012004197	MN0010000	10/11/2012 00:59	204	Property Damage
632 MINNESOTA AVE N, AITKIN, 2924				
2012004198	MN0010000	10/11/2012 01:59	212	DWI arrest
Tamarack, 0700				
2012004199	MN0010000	10/11/2012 02:19	210	Suspicion Complaint
19759 GOSHAWK ST, MCGREGOR, 4533				

Aitkin County Sheriff's Office

Printed On: Thu, Oct 18, 2012

Incident Log Report

Case Number	NCIC	Date Reported	Officer	Offense
2012004200	MN0010000	10/11/2012 06:02	995	Accident
Location 48656 US HWY 169, PALISADE, 4223				
2012004201	MN0010000	10/11/2012 08:55	255	Property Missing and Found
Location 174 RED OAK DR, Aitkin, 0100				
2012004202	MN0010000	10/11/2012 09:28	208	Burglary/Theft
Location 39095 OSPREY AVE, AITKIN, 2901				
2012004203	MN0010000	10/11/2012 12:11	208	Animal Complaint
Location 1900				
2012004204	MN0010000	10/11/2012 13:00	203	OFFP/HRO Violation
Location Aitkin, 0900				
2012004205	MN0010000	10/11/2012 13:50	255	***No press***
Location Palisade, 0600				
2012004206	MN0010000	10/11/2012 14:01	208	Threat Complaint
Location 106 ASPEN ST, McGrath, 0400				
2012004207	MN0010000	10/11/2012 14:15	219	Alarm
Location 29041 442ND PL, AITKIN, 2329				
2012004208	MN0010000	10/11/2012 14:51	219	Animal Complaint
Location 25337 US HWY 169, AITKIN, 1716				
2012004209	MN0010000	10/11/2012 17:36	498	Fatal vehicle accident
Location 3420				
2012004210	MN0010000	10/11/2012 19:21	DNRMC	Fire Call
Location 32565 182ND ST, ISLE, 1320				
2012004211	MN0010000	10/11/2012 20:03	212	Accident
Location 1503				
2012004212	MN0010000	10/11/2012 21:20	224	Recovered stolen vehicle
Location 111 TAMARACK BLVD W, Tamarack, 0700				
2012004213	MN0010000	10/12/2012 00:21	212	Driving Under the Influence
Location McGregor, 4503				
2012004214	MN0010000	10/12/2012 05:04	212	Suspicion Complaint
Location 39370 STATE HWY 47, 3030				
2012004215	MN0010000	10/12/2012 09:04	MFD	Fire Call
Location Main St, McGregor, 0500				
2012004216	MN0010000	10/12/2012 10:00	208	ATL/Welfare Check
Location 12 S MAIN ST, McGregor, 0500				
2012004217	MN0010000	10/12/2012 10:10	255	Burglary/Theft
Location 1 MINNESOTA AVE S, Aitkin, 0100				
2012004218	MN0010000	10/12/2012 09:47	208	ATL/Welfare Check
Location 309 COOK ST, Palisade, 0600				

Aitkin County Sheriff's Office

Printed On: Thu, Oct 18, 2012

Incident Log Report

Case Number	NCIC	Date Reported	Officer	Offense
2012004219	MN0010000	10/12/2012 10:27	218	Burglary/Theft
Location 41584 328TH LN, AITKIN, 2311				
2012004220	MN0010000	10/12/2012 10:54	208	ATL/Welfare Check
18568 GOSHAWK ST, MCGREGOR, 4527				
2012004221	MN0010000	10/12/2012 10:40	218	ATL/Welfare Check
32360 215TH LN, ISLE, 1305				
2012004222	MN0010000	10/12/2012 11:43	203	***No press***
29740 PARTRIDGE AVE, AITKIN, 2329				
2012004223	MN0010000	10/12/2012 12:14	208	***No press***
306 2ND ST NW, Aitkin, 2924				
2012004224	MN0010000	10/12/2012 13:43	208	Welfare check
2 E CENTER AVE, McGregor, 0500				
2012004225	MN0010000	10/12/2012 15:07	219	Burglary/Theft
0800				
2012004226	MN0010000	10/12/2012 15:48	219	Disturbance
2911				
2012004227	MN0010000	10/12/2012 17:07	255	Motorist assist
19 2ND ST NW, Aitkin, 0100				
2012004228	MN0010000	10/12/2012 18:27	255	Burglary/Theft
313 5TH ST NW, Aitkin, 0100				
2012004229	MN0010000	10/12/2012 18:39	219	Property Missing and Found
51856 209TH PL, MCGREGOR, 4505				
2012004230	MN0010000	10/13/2012 01:00	256	Accident
224 2ND ST NE, Aitkin, 0100				
2012004231	MN0010000	10/13/2012 01:46	IFD	Fire Call
15543 270TH PL, ISLE, 1006				
2012004232	MN0010000	10/13/2012 09:19	261	Burglary/Theft
400 QUADNA RD, Hill City, 0200				
2012004233	MN0010000	10/13/2012 10:30	252	Suspicion Complaint
225 2nd Ave SW, Aitkin, 0100				
2012004234	MN0010000	10/13/2012 10:53	PFD	Fire Call
43563 320TH PL, AITKIN, 3716				
2012004235	MN0010000	10/13/2012 11:09	208	Suspicion Complaint
1012				
2012004236	MN0010000	10/13/2012 11:54	218	Alarm
37919 495th Ln, 4216				
2012004237	MN0010000	10/13/2012 12:01	218	Property Damage
6015				

Aitkin County Sheriff's Office

Printed On: Thu, Oct 18, 2012

Incident Log Report

Case Number	NCIC	Date Reported	Officer	Offense
2012004238 3100	MN0010000	10/13/2012 12:11	K258	Property Missing and Found
2012004239 36436 196TH PL, MCGREGOR, 3321	MN0010000	10/13/2012 13:35	208	Disturbance
2012004240 315 1st Ave SW, Aitkin, 0100	MN0010000	10/13/2012 15:06	AFD	Alarm
2012004241 114 SERVICE DR, Hill City, 0200	MN0010000	10/13/2012 15:55	263	Gas drive off
2012004242 38624 240TH ST, AITKIN, 1820	MN0010000	10/13/2012 15:59	219	Probation/Sobriety Court Check
2012004243 Aitkin, 0100	MN0010000	10/13/2012 17:57	252	Property Damage
2012004244 36683 525TH LN, PALISADE, 0600	MN0010000	10/13/2012 19:14	219	Burglary/Theft
2012004245 22255 450th Ave, 1731	MN0010000	10/13/2012 19:40	995	Ambulance Call
2012004246 Great River Rd, 5033	MN0010000	10/13/2012 19:44	224	Accident
2012004247 20465 465TH LN, MCGREGOR, 4532	MN0010000	10/13/2012 19:34	MFD	Fire Call
2012004248 201 MAIN ST, Palisade, 0600	MN0010000	10/13/2012 20:07	224	Disturbance
2012004249 22392 519TH LN, MCGREGOR, 4401	MN0010000	10/13/2012 21:31	219	Burglary/Theft
2012004250 51900 182ND PL, MCGREGOR, 4503	MN0010000	10/14/2012 05:18	212	Fraud/ID Theft
2012004251 45339 215TH LN, AITKIN, 1706	MN0010000	10/14/2012 09:13	208	Assist Other Department
2012004252 Aitkin, 0100	MN0010000	10/14/2012 11:07	252	Property Missing and Found
2012004253 0800	MN0010000	10/14/2012 14:25	218	Suspicion Complaint
2012004254 26191 GROUSE ST, MCGREGOR, 4417	MN0010000	10/14/2012 18:32	DNRA	Fire Call
2012004255 26191 GROUSE ST, MCGREGOR	MN0010000	10/14/2012 18:32	DNRA	***Void***
2012004256 200 BUNKER HILL DR, Aitkin, 0100	MN0010000	10/14/2012 18:33	219	Transport

Aitkin County Sheriff's Office

Printed On: Thu, Oct 18, 2012

Incident Log Report

Case Number	NCIC	Date Reported	Officer	Offense
2012004257	MN0010000	10/14/2012 19:30	224	Disturbance
Location 20399 GOSHAWK ST, MCGREGOR, 4532				
2012004258	MN0010000	10/14/2012 23:16	499	Ambulance Call
208 W HWY 210, McGregor, 0500				
2012004259	MN0010000	10/15/2012 04:08	FFD	Fire Call
10772 110TH AVE, FINLAYSON, 1236				
2012004260	MN0010000	10/15/2012 06:18	212	Accident
1227				
2012004261	MN0010000	10/15/2012 11:37	218	Burglary/Theft
21927 US HWY 169, AITKIN, 1704				
2012004262	MN0010000	10/15/2012 14:08	251	Property Missing and Found
308 2ND ST NE, Aitkin, 0100				
2012004263	MN0010000	10/15/2012 14:29	217	Burglary/Theft
39140 290TH ST, AITKIN				
2012004264	MN0010000	10/15/2012 14:56	251	Assault
312 MINNESOTA AVE N				
2012004265	MN0010000	10/15/2012 15:56	222	Warrant Arrest
217 2ND ST NW				
2012004266	MN0010000	10/15/2012 17:41	sp86	Accident
25508 STATE HWY 210				
2012004267	MN0010000	10/15/2012 19:26	224	Disturbance
35524 440TH PL, AITKIN, 2929				
2012004268	MN0010000	10/15/2012 20:09	219	ATL/Welfare Check
38923 491ST LN, PALISADE				
2012004269	MN0010000	10/15/2012 21:23	212	Warrant Arrest
state hwy 65				
2012004270	MN0010000	10/16/2012 03:59	212	Burglary/Theft
42910 DAISY ST, AITKIN				
2012004271	MN0010000	10/16/2012 07:08	255	Vulnerable Adult
301 Minnesota Ave S				
2012004272	MN0010000	10/16/2012 08:17	251	Property Damage
209 2ND ST NW				
2012004273	MN0010000	10/16/2012 10:01	218	Assist Other Department
2012004274	MN0010000	10/16/2012 11:44	203	Assist Other Department
152 Linden Ave NE				
2012004275	MN0010000	10/16/2012 11:16	218	Burglary/Theft
200 W HWY 210				

Aitkin County Sheriff's Office

Printed On: Thu, Oct 18, 2012

Incident Log Report

<i>Case Number</i>	<i>NCIC</i>	<i>Date Reported</i>	<i>Officer</i>	<i>Offense</i>
2012004276 20132 315TH LN, MCGREGOR	MN0010000	10/16/2012 12:35	208	Suspicion Complaint
2012004277 39622 342ND LN, AITKIN	MN0010000	10/16/2012 15:14	995	Ambulance Call
2012004278 31349 370TH ST, AITKIN	MN0010000	10/16/2012 17:49	212	Probation Violation
2012004279 21966 480TH ST, MCGREGOR, 4424	MN0010000	10/16/2012 22:02	219	Disturbance

Total Records: 96



Aitkin County Sheriff's Office
217 Second Street NW, Room 185
Aitkin, MN 56431
(218) 927-7435

**Incident Date Reported BETWEEN 10/03/12
And 10/09/12
And Incident NCIC=MN0010000**

Printed On: Thu, Oct 11, 2012

Incident Log Report

<i>Case Number</i>	<i>NCIC</i>	<i>Date Reported</i>	<i>Officer</i>	<i>Offense</i>
2012004071 Location 50160 STATE HWY 65, MCGREGOR, 4412	MN0010000	10/03/2012 01:48	212	Accident
2012004072 141 2ND AVE, McGregor, 0500	MN0010000	10/03/2012 06:07	498	Ambulance Call
2012004073 4328	MN0010000	10/03/2012 06:59	208	Accident
2012004074 PO box 17370 lot 736	MN0010000	10/03/2012 10:01	225	Disturbance
2012004075 32656 186th St, Isle, 1320	MN0010000	10/03/2012 11:21	5450	Ambulance Call
2012004076 141 2ND AVE, McGregor, 0500	MN0010000	10/03/2012 14:08	498	Ambulance Call
2012004077 21927 US HWY 169, AITKIN, 1704	MN0010000	10/03/2012 17:02	218	Property Damage
2012004078 47401 165TH PL, MCGREGOR, 4527	MN0010000	10/03/2012 17:43	218	ATL/Welfare Check
2012004079 57293 270th Ave, 5006	MN0010000	10/03/2012 15:37	204	Suspicion Complaint
2012004080 324 1st St NW, Aitkin, 0100	MN0010000	10/03/2012 19:00	252	Assist Other Department
2012004081 0800	MN0010000	10/03/2012 19:32	212	Suspicion Complaint
2012004082 29756 438TH LN, PALISADE, 3714	MN0010000	10/03/2012 20:01	210	Alarm
2012004083 2304	MN0010000	10/03/2012 20:10	212	Accident
2012004084 47401 165TH PL, MCGREGOR, 4527	MN0010000	10/03/2012 20:21	224	Suspicion Complaint
2012004085 STATE HWY 65, McGregor, 4500	MN0010000	10/03/2012 20:57	224	Traffic Stop
2012004086 67169 GREAT RIVER RD, JACOBSON, 6318	MN0010000	10/03/2012 21:17	204	Disturbance

Aitkin County Sheriff's Office

Printed On: Thu, Oct 11, 2012

Incident Log Report

Case Number	NCIC	Date Reported	Officer	Offense
2012004087	MN0010000	10/03/2012 21:55	212	Disturbance
0800				
2012004088	MN0010000	10/03/2012 23:17	498	Ambulance Call
36436 196TH PL, MCGREGOR, 3321				
2012004089	MN0010000	10/04/2012 06:19	225	Alarm
241 W HWY 210, McGregor, 0500				
2012004090	MN0010000	10/04/2012 07:43	498	Ambulance Call
51120 LAKE AVE, MCGREGOR, 4503				
2012004091	MN0010000	10/04/2012 09:21	255	Property Damage
610 AIR PARK DR, AITKIN, 0100				
2012004092	MN0010000	10/04/2012 14:00	221	POR violation
Aitkin, 0800				
2012004093	MN0010000	10/04/2012 14:45	AFD	Fire Call
38384 290TH ST, AITKIN, 2429				
2012004094	MN0010000	10/04/2012 14:53	225	Alarm
35164 322ND LN, AITKIN, 2411				
2012004095	MN0010000	10/04/2012 15:08	253	Property Missing and Found
112 MINNESOTA AVE N, Aitkin, 0100				
2012004096	MN0010000	10/04/2012 15:15	251	Accident
Aitkin, 0100				
2012004097	MN0010000	10/04/2012 16:06	206	Disturbance
3636				
2012004098	MN0010000	10/04/2012 17:22	216	Accident
2928				
2012004099	MN0010000	10/04/2012 18:27	498	Ambulance Call
20149 GOSHAWK ST, MCGREGOR, 4531				
2012004100	MN0010000	10/04/2012 19:33	253	ATL/Welfare Check
403 3RD ST NW, Aitkin, 0100				
2012004101	MN0010000	10/04/2012 19:51	210	Suspicion Complaint
10772 110TH AVE, FINLAYSON, 1236				
2012004102	MN0010000	10/04/2012 19:55	253	Ambulance Call
315 1ST AVE SW, Aitkin, 0100				
2012004103	MN0010000	10/04/2012 20:55	253	ATL/Welfare Check
123 3RD ST SW, Aitkin, 0100				
2012004104	MN0010000	10/05/2012 04:04	995	Ambulance Call
403 3RD ST NW, Aitkin, 0100				
2012004105	MN0010000	10/05/2012 09:17	498	Ambulance Call
2 E CENTER AVE, McGregor, 0500				

Aitkin County Sheriff's Office

Printed On: Thu, Oct 11, 2012

Incident Log Report

Case Number	NCIC	Date Reported	Officer	Offense
2012004106	MN0010000	10/05/2012 10:08	225	ATL/Welfare Check
Location McGregor, 0500				
2012004107	MN0010000	10/05/2012 12:20	221	Animal Complaint
25393 385TH AVE, AITKIN, 1817				
2012004108	MN0010000	10/05/2012 12:45	MFD	Fire Call
52797 LOON AVE, MCGREGOR, 5134				
2012004109	MN0010000	10/05/2012 12:49	225	***Void***
2314				
2012004110	MN0010000	10/05/2012 12:49	225	Traffic Stop
2314				
2012004111	MN0010000	10/05/2012 16:05	221	Public assist
1820				
2012004112	MN0010000	10/05/2012 16:41	253	Juvenile disturbance
Aitkin, 0100				
2012004113	MN0010000	10/05/2012 16:48	216	Disturbance
36006 200TH AVE, MCGREGOR, 3321				
2012004114	MN0010000	10/05/2012 17:04	MFD	Fire Call
52797 LOON AVE, MCGREGOR, 5134				
2012004115	MN0010000	10/05/2012 17:50	204	Disturbance
30124 OAK AVE, AITKIN, 2429				
2012004116	MN0010000	10/05/2012 18:46	500	Ambulance Call
41971 OSPREY AVE, AITKIN, 3630				
2012004117	MN0010000	10/05/2012 18:31	217	Gas drive off
35558 STATE HWY 200, HILL CITY, 0200				
2012004118	MN0010000	10/05/2012 19:16	254	Kill deer permit
2923				
2012004119	MN0010000	10/05/2012 20:12	204	Accident
2925				
2012004120	MN0010000	10/05/2012 20:33	254	Driving Complaint
Aitkin, 0100				
2012004121	MN0010000	10/05/2012 22:19	254	Gas drive off
13 2nd St NW, Aitkin, 0100				
2012004122	MN0010000	10/06/2012 00:04	204	Alarm
20930 367TH LN, MCGREGOR, 3320				
2012004123	MN0010000	10/06/2012 08:13	995	Ambulance Call
32650 389TH PL, AITKIN, 2408				
2012004124	MN0010000	10/06/2012 09:52	225	Traffic Stop
58094 US HWY 169, 5434				

Aitkin County Sheriff's Office

Printed On: Thu, Oct 11, 2012

Incident Log Report

<i>Case Number</i>	<i>NCIC</i>	<i>Date Reported</i>	<i>Officer</i>	<i>Offense</i>
2012004125	MN0010000	10/06/2012 11:05	225	Alarm
36559 US HWY 169, AITKIN, 3030				
2012004126	MN0010000	10/06/2012 12:46	225	Burglary/Theft
45315 STATE HWY 65, MCGREGOR, 3801				
2012004127	MN0010000	10/06/2012 13:20	221	Harassment Complaint
0800				
2012004128	MN0010000	10/06/2012 13:42	221	Burglary/Theft
43242 310TH PL, PALISADE, 3716				
2012004129	MN0010000	10/06/2012 14:19	995	Accident
2nd St NW, Aitkin, 0100				
2012004130	MN0010000	10/06/2012 14:03	221	Burglary/Theft
21927 US HWY 169, AITKIN, 1704				
2012004131	MN0010000	10/06/2012 14:49	221	Suspicion Complaint
Palisade, 0600				
2012004132	MN0010000	10/06/2012 15:18	225	Suspicion Complaint
1717				
2012004133	MN0010000	10/06/2012 15:22	261	Property Missing and Found
146 CEDAR ST N, Hill City, 0200				
2012004134	MN0010000	10/06/2012 16:50	253	Open door
1115 2ND ST NW, Aitkin, 0100				
2012004135	MN0010000	10/06/2012 20:11	204	Campfire
21826 512TH LN, MCGREGOR, 4506				
2012004136	MN0010000	10/06/2012 21:03	216	Accident
4325				
2012004137	MN0010000	10/06/2012 21:27	204	Burglary/Theft
49482 202ND PL, MCGREGOR, 4517				
2012004138	MN0010000	10/06/2012 22:21	204	Burglary/Theft
49463 202ND PL, MCGREGOR, 4517				
2012004139	MN0010000	10/06/2012 23:07	254	Traffic Stop
Aitkin, 0100				
2012004140	MN0010000	10/07/2012 02:13	216	Disturbance
19 S MAIN ST, McGregor, 0500				
2012004141	MN0010000	10/07/2012 02:30	995	Ambulance Call
2 MINNESOTA AVE S, Aitkin, 0100				
2012004142	MN0010000	10/07/2012 10:21	225	Burglary/Theft
38457 DEER ST, AITKIN, 2408				
2012004143	MN0010000	10/07/2012 13:47	AFD	Fire Call
29013 420TH AVE, AITKIN, 2326				

Aitkin County Sheriff's Office

Printed On: Thu, Oct 11, 2012

Incident Log Report

<i>Case Number</i>	<i>NCIC</i>	<i>Date Reported</i>	<i>Officer</i>	<i>Offense</i>
2012004144 47470 Kestrel Ave, 4627	MN0010000	10/07/2012 15:00	217	Burglary/Theft
2012004145 48492 195th Pl, 4521	MN0010000	10/07/2012 15:49	217	Driving Complaint
2012004146 28586 303RD PL, AITKIN, 2534	MN0010000	10/07/2012 16:09	221	Disturbance
2012004147 17658 STATE HWY 18, FINLAYSON, 1114	MN0010000	10/07/2012 17:56	MCFD	Fire Call
2012004148 36436 196TH PL, MCGREGOR, 3321	MN0010000	10/07/2012 22:19	498	Ambulance Call
2012004149 36436 196TH PL, MCGREGOR	MN0010000	10/08/2012 00:36	204	Other (Start Code)
2012004150 36436 196TH PL, MCGREGOR	MN0010000	10/08/2012 01:35	498	Ambulance Call
2012004151 36436 196TH PL, MCGREGOR	MN0010000	10/08/2012 02:57	498	Ambulance Call
2012004152 215 3RD ST SE	MN0010000	10/08/2012 03:38	995	Ambulance Call
2012004153 30114 OAK AVE, AITKIN	MN0010000	10/08/2012 04:01	572	Ambulance Call
2012004154 215 3RD ST SE	MN0010000	10/08/2012 07:01	251	Ambulance Call
2012004155 W White Pine Trail	MN0010000	10/08/2012 09:56	DNRA	Fire Call
2012004156 1068 AIR PARK DR, AITKIN	MN0010000	10/08/2012 12:50	251	Burglary/Theft
2012004157 0800	MN0010000	10/08/2012 13:00	225	Harassment Complaint
2012004158 225 2nd ave sw	MN0010000	10/08/2012 12:54	251	Burglary/Theft
2012004159 Co 13	MN0010000	10/08/2012 14:56	225	Driving Complaint
2012004160 32937 Nuthatch Ave	MN0010000	10/08/2012 15:48	206	Property Damage
2012004161 35270 440TH PL, AITKIN, 2928	MN0010000	10/08/2012 15:52	210	Runaway juveniles
2012004162 28946 STATE HWY 47, AITKIN	MN0010000	10/08/2012 16:07	K298	Other (Start Code)

Aitkin County Sheriff's Office

Printed On: Thu, Oct 11, 2012

Incident Log Report

Case Number	NCIC	Date Reported	Officer	Offense
2012004163	MN0010000	10/08/2012 16:23	225	Disturbance
20849 370TH LN, MCGREGOR				
2012004164	MN0010000	10/08/2012 17:19	995	Ambulance Call
21 1st st nw #5				
2012004165	MN0010000	10/08/2012 18:53	204	Burglary/Theft
Sandabacka Lake				
2012004166	MN0010000	10/08/2012 19:40	204	Other (Start Code)
state hwy 65/co rd 63				
2012004167	MN0010000	10/08/2012 21:32	253	Alarm
171 RED OAK DR				
2012004168	MN0010000	10/08/2012 22:21	210	Alarm
12239 180TH AVE, MCGRATH				
2012004169	MN0010000	10/08/2012 23:06	254	Alarm
121 2ND ST NW				
2012004170	MN0010000	10/08/2012 23:31	261	Alarm
114 SERVICE DR				
2012004171	MN0010000	10/09/2012 05:10	498	Ambulance Call
20849 370th ln				
2012004172	MN0010000	10/09/2012 06:40	255	Suspicion Complaint
215 3RD ST SE				
2012004173	MN0010000	10/09/2012 09:06	225	Suspicion Complaint
39307 318th Ln				
2012004174	MN0010000	10/09/2012 10:32	221	Fire Call
20632 487TH ST, MCGREGOR				
2012004175	MN0010000	10/09/2012 10:57	255	ATL/Welfare Check
840 2nd St NW				
2012004176	MN0010000	10/09/2012 12:33	206	Fraud/ID Theft
140 N Warren St				
2012004177	MN0010000	10/09/2012 12:38	255	Accident
Mcdonalds Parking Lot				
2012004178	MN0010000	10/09/2012 13:08	251	Property Damage
171 RED OAK DR				
2012004179	MN0010000	10/09/2012 15:03	253	Disturbance
225 2nd ave sw				
2012004180	MN0010000	10/09/2012 16:24	223	Boat and Water
Spirit Lake				
2012004181	MN0010000	10/09/2012 19:06	216	Accident
26910 440TH PL, AITKIN				

Aitkin County Sheriff's Office

Printed On: Thu, Oct 11, 2012

Incident Log Report

<i>Case Number</i>	<i>NCIC</i>	<i>Date Reported</i>	<i>Officer</i>	<i>Offense</i>
2012004182	MN0010000	10/09/2012 22:06	216	Disturbance
<i>Location</i>				
Loon Ave				
2012004183	MN0010000	10/09/2012 23:00	HCFR	Ambulance Call
530 PARK AVE NE				

Total Records: 113

