

August 22, 2012

RE: Parcel #

Dear :

This letter is to inform you of requirements that exist in the Aitkin County Flood Plain Management Ordinance and to assist you in complying with the Ordinance. In order to be eligible to participate in the National Flood Insurance Program, Aitkin County must have an approved Flood Plain Management Ordinance. Aitkin County adopted the current Flood Plain Management Ordinance on February 23, 1983 with the most recent amendment on June 6, 2001. Section 11.15 of the Flood Plain Management Ordinance requires any structure that is destroyed by any means to an extent of 50% or more of its market value, shall not be reconstructed except in conformity with the provisions of the Ordinance.

The Aitkin County Assessor's Office recently completed assessments of flood damaged properties in Aitkin County. The structure on your property, based on FEMA assessment guidelines, indicate 50% or more damage to the value of the structure. Recognizing the FEMA Assessment procedure may not reflect an accurate valuation assessment, we are giving you the opportunity to have your structure re-assessed by a licensed private assessor/appraiser or having an estimate from a licensed building contractor for the reconstruction of the structure to pre-flood conditions. If the private assessment or contractor estimate indicates the structure was not 50% damaged by the flooding, when compared to the current county assessed value of the structure, then repair or reconstruction work may begin to restore the structure to pre-flood conditions with approval from this Office. We will need a copy of the appraisal or estimate for documentation in our files.

Without the private appraisal or reconstruction assessment, based on the Aitkin County Assessor's recent assessment, any reconstruction or rebuilding must comply with the Aitkin County Flood Plain Management Ordinance which will involve elevating all portions of the structure one foot above the 100 year flood plain level and meeting all required setback distances.

It is very important that you understand what is being required in this letter. If we do not hear from you or receive a private assessment/appraisal/estimate within 30 days of the date of this letter, a follow-up inspection will be conducted to verify no reconstruction/repair work has been commenced.

Please contact me or my staff with any questions you may have or for more information. We look forward to assisting you through this process.

Sincerely,

Terry Neff
Environmental Services Director

cc: Ceil Strauss, MN DNR State Floodplain Coordinator
Lonnie Thomas, MN DNR Area Hydrologist

c:\zoning\flooddamageletter2012

Scott A. Turner

SHERIFF OF AITKIN COUNTY

217 Second Street NW
Aitkin, MN 56431

218-927-7435 Emergency 911
Sheriff Fax 218-927-7359 / Dispatch Fax 218-927-6887
TOLL FREE 1-888-900-2138

Neighborhood Watch

The idea of a neighborhood watch program in different parts of Aitkin County has been discussed at different times for many years. Perhaps the idea that there would be a large time commitment from participants, questions about the effectiveness of such programs or other unknown factors have prevented it from happening. Establishing a neighborhood watch program does not have to involve a huge time commitment and studies have shown that neighborhoods with low crime rates and/or decreases in home burglaries often have neighborhood watch programs.

Property crimes, such as burglaries, thefts and vandalism are crimes of opportunity. The trend away from personal contact in the neighborhood and the decrease in time that families spend at home are two reasons why communities are susceptible to crimes of opportunity. A neighborhood watch program can help build that sense of community and engage residents to take notice of what is happening in their neighborhood. Law enforcement would rather work with citizens to keep their neighborhoods safe than spend time and resources investigating crime after it occurs.

When one thinks of a neighborhood watch program it undoubtedly conjures up thoughts of citizen patrols, block captains and a myriad of other thoughts. In reality it may be as simple as getting to know your neighbors. Yes, it can be that simple. It can simply be engaging you to notice suspicious activities and report them to each other and to law enforcement.

The prevention of crime – particularly crime involving residential neighborhoods – is a responsibility that must be shared equally by law enforcement and citizens. Implicit in the motto, “To Protect and Serve,” is the concept of cooperation with the citizens. What can the citizens do to begin the process?

- Get to know your neighbors and the persons and vehicles that should be at their home or cabin.
- Know when someone should be at a particular home or cabin.
- Report suspicious activity such as:

Unusual noises: gunshots, screaming, breaking glass

Suspicious Persons: persons going door to door, loitering, or present at unusual times

Suspicious Vehicles: parked or occupied in unusual locations or at unusual times, abandoned vehicles, out of place vehicles (i.e. service vehicles at night?)

➤ Describing Events: (who, what, where, when, and how?)

Describing what you saw - vehicles: make, model, color, and license number

- persons: age, sex, race, height, weight, hair, facial features, etc.

When describing events write it down – memories play tricks on us

It would be a great start to begin doing what was described above. The most important aspect – getting to know your neighbors will likely be enjoyable and may lead to newfound friendships. More importantly, it will likely lead to a safer neighborhood. We are here to serve, but we do need the help. Please let me know if there is interest in developing the Neighborhood Watch program into something more.

AITKIN COUNTY ADMINISTRATION

Aitkin County Courthouse
217 Second Street N.W. Room 130
Aitkin, MN 56431
218-927-7276
Fax: 218-927-7374

TO: Aitkin County Board of Commissioners and John Welle, Aitkin County Engineer

FROM: Patrick Wussow, Aitkin County Administrator

RE: Letter from VanderMey

DATE: August 24, 2012

The attached letter from Tom and Jane VenderMey identifies a flooding issue the VanderMey's incurred with the flooding this summer. I spoke with John Welle and he indicated that he was aware of the situation as he visited the site with within a week of the flooding. He indicated that he is gathering additional data which will include discussions with the DNR about how much water can be taken down stream without incurring additional problems.

It seems this issue has been a concern to the resident since the road improvements occurred back in the 1980's, prior to John Welles arrival to the County.

This is one of many different projects John has on his agenda due to the flood this year, in addition to his normal work load.

The County Engineer is aware of the situation and is checking into alternatives. I have informed the property owners that I will not be placing this item on the County Board agenda at this time.

Please contact me if you have questions.

August 20, 2012

27317 State HWY 210
Aitkin, MN 56431
218-768-4891

AUG 22 2012

Aitkin County Board of Commissioners
209 2nd ST NW
Aitkin, MN 56431

Dear Aitkin County Board of Commissioners:

We would like to be placed on the Aitkin County Board meeting agenda.

We are writing this letter about our property on Nature Avenue in Fleming Township. Section 14 owned by John and Rhonda Beasley, 40352, Nature Ave., Aitkin, MN 56431. Section 23 owned by Tom and Jane VanderMey, 42820 Nature Ave., Aitkin, MN 56431.

On June 20, 2012, our property became flooded due to heavy rains. There was 4.5 feet more water on the east side of Nature Avenue than on the west side of the road causing serious flooding. Both families lost household and farm property when the water rose to excessive levels (entering through windows and doorways filling the basement to the floor joists).

I (Jane VanderMey) moved to 42820 Nature Ave. in 1946. Before the road was redone in 1986 there was a bridge allowing water flow. Eventually the bridge was replaced with culverts. The road before the '86 improvements was lower which allowed spring run-off and heavy rain from storms. The water that the culverts could not handle would run over the road.

In 1986, the road was raised/tarred and two (2) four (4) foot culverts were placed in section 23 and an eighteen (18) inch culvert was placed in section 14. Therefore, with the road being at a higher elevation and the improper size of the culverts, water flow was decreased and could not successfully handle the water runoff. All of the east water from the Fleming Watershed runs through these culverts to Wilkins and Fleming Lake. At this date, August 20, 2012, according to SEH, Engineers, ST. Cloud, MN 56302, February, 2007, Survey, Fleming Lake is 2.5 feet higher.

We are asking for additional culverts be installed next to the existing two (2) four (4) foot culverts in section 23. We are also asking that additional culverts are necessary in section 14. This would help to alleviate some high water at spring run-off and flooding during heavy rains which has happened multiple times within the last 30 years including this year.

Thank you.

Sincerely,

Tom and Jane VanderMey

Tom Vander Mey
Jane Vander Mey

John and Ronda Beasley

John & Beasley
Rhonda H Beasley



Aitkin County Sheriff's Office
217 Second Street NW, Room 185
Aitkin, MN 56431
(218) 927-7435
Incident Date Reported BETWEEN 08/15/12
And 08/21/12
And Incident NCIC=MN0010000

Printed On: Thu, Aug 23, 2012

Incident Log Report

<i>Case Number</i>	<i>NCIC</i>	<i>Date Reported</i>	<i>Officer</i>	<i>Offense</i>
2012003250 1027 1ST ST NW, Aitkin, 0100	MN0010000	08/15/2012 00:47	256	ATL/Welfare Check
2012003251 28965 US HWY 169, AITKIN, 2334	MN0010000	08/15/2012 07:54	204	Burglary/Theft
2012003252 101 E CENTER AVE, McGregor, 0500	MN0010000	08/15/2012 09:29	210	Property Missing and Found
2012003253 610 AIR PARK DR, AITKIN, 0100	MN0010000	08/15/2012 09:38	254	Info from the public
2012003254 21214 496TH LN, MCGREGOR, 4518	MN0010000	08/15/2012 09:51	218	Property Missing and Found
2012003255 39625 DEER ST, AITKIN, 2936	MN0010000	08/15/2012 10:40	210	Property Damage
2012003256 30147 DAM LAKE ST, AITKIN, 2503	MN0010000	08/15/2012 10:47	206	Misc officer
2012003257 19606 364TH LN, MCGREGOR, 3321	MN0010000	08/15/2012 11:24	218	Animal Complaint
2012003258 3114	MN0010000	08/15/2012 11:21	204	Accident
2012003259 610 AIR PARK DR, AITKIN, 0100	MN0010000	08/15/2012 13:09	254	Misc public complaint
2012003260 131 LINDEN AVE NW, Hill City, 0200	MN0010000	08/15/2012 14:32	261	Disturbance
2012003261 200 BUNKER HILL DR, Aitkin, 0100	MN0010000	08/15/2012 15:29	253	Disturbance
2012003262 Miinnesota Ave N, Aitkin, 0100	MN0010000	08/15/2012 15:46	253	Accident
2012003263 200 BUNKER HILL DR, Aitkin, 0100	MN0010000	08/15/2012 16:48	253	ATL/Welfare Check
2012003264 Main St, Palisade, 0600	MN0010000	08/15/2012 19:08	216	Animal Complaint
2012003265 215 3RD ST SE, Aitkin, 0100	MN0010000	08/15/2012 19:42	253	Disturbance

Aitkin County Sheriff's Office

Printed On: Thu, Aug 23, 2012

Incident Log Report

<i>Case Number</i>	<i>NCIC</i>	<i>Date Reported</i>	<i>Officer</i>	<i>Offense</i>
<i>Location</i>				
2012003266	MN0010000	08/15/2012 20:21	AFD	Fire Call
222 2ND AVE NW, Aitkin, 0100				
2012003267	MN0010000	08/15/2012 20:23	995	Ambulance Call
41469 Osprey Ave, 3630				
2012003268	MN0010000	08/15/2012 21:07	253	ATL/Welfare Check
508 5TH ST NW, Aitkin, 0100				
2012003269	MN0010000	08/15/2012 22:56	224	Burglary/Theft
221 E 1ST AVE, McGregor, 0500				
2012003270	MN0010000	08/15/2012 23:20	219	Alarm
44297 CONIFER ST, AITKIN, 1705				
2012003271	MN0010000	08/16/2012 03:13	219	Alarm
22039 321ST AVE, AITKIN, 1932				
2012003272	MN0010000	08/16/2012 04:16	995	Ambulance Call
315 1ST AVE SW, 164, Aitkin, 0100				
2012003273	MN0010000	08/16/2012 07:08	995	Ambulance Call
301 MINNESOTA AVE S, Aitkin, 0100				
2012003274	MN0010000	08/16/2012 07:11	251	Disturbance
215 3RD ST SE, Aitkin, 0100				
2012003275	MN0010000	08/16/2012 07:49	225	Alarm
22039 321ST AVE, AITKIN, 1932				
2012003276	MN0010000	08/16/2012 09:06	225	Burglary/Theft
47952 STATE HWY 65, MCGREGOR, 4530				
2012003277	MN0010000	08/16/2012 09:50	218	Animal Complaint
33555 360TH ST, AITKIN, 3130				
2012003278	MN0010000	08/16/2012 09:53	225	Driving Complaint
3900				
2012003279	MN0010000	08/16/2012 11:34	216	Disturbance
39625 Deer St, Aitkin, 0100				
2012003280	MN0010000	08/16/2012 11:26	251	Child Custody
508 5TH ST NW, Aitkin, 0100				
2012003281	MN0010000	08/16/2012 12:07	261	Property Damage
400 PARK AVE NE, Hill City, 0200				
2012003282	MN0010000	08/16/2012 11:56	254	Follow Up
508 5TH ST NW, Aitkin, 0100				
2012003283	MN0010000	08/16/2012 13:44	261	Child Custody
341 HENRIETTA AVE SE, Hill City, 0200				
2012003284	MN0010000	08/16/2012 14:19	254	Assault
408 RIVERDALE DR, Aitkin, 0100				

Aitkin County Sheriff's Office

Printed On: Thu, Aug 23, 2012

Incident Log Report

<i>Case Number</i>	<i>NCIC</i>	<i>Date Reported</i>	<i>Officer</i>	<i>Offense</i>
<i>Location</i>				
2012003285	MN0010000	08/16/2012 14:58	208	Transport
Aitkin, 0100				
2012003286	MN0010000	08/16/2012 18:33	252	Suspicion Complaint
711 AIR PARK DR, AITKIN, 0100				
2012003287	MN0010000	08/16/2012 18:53	219	Animal Complaint
35259 387TH AVE, AITKIN, 3329				
2012003288	MN0010000	08/16/2012 20:36	252	ATL/Welfare Check
692 AIR PARK DR, AITKIN, 0100				
2012003289	MN0010000	08/16/2012 21:23	252	Found property
1027 1ST ST NW, Aitkin, 0100				
2012003290	MN0010000	08/16/2012 22:02	219	Probation Violation
23796 450TH ST, MCGREGOR, 3802				
2012003291	MN0010000	08/16/2012 22:20	224	Alarm
46026 STATE HWY 65, MCGREGOR, 4531				
2012003292	MN0010000	08/17/2012 03:51	498	Ambulance Call
36436 196TH PL, MCGREGOR, 3321				
2012003293	MN0010000	08/17/2012 07:56	218	Property Damage
61841 210TH PL, JACOBSON, 5707				
2012003294	MN0010000	08/17/2012 08:25	225	Animal Complaint
3025				
2012003295	MN0010000	08/17/2012 08:53	995	Ambulance Call
230 1ST AVE NE, Aitkin, 0100				
2012003296	MN0010000	08/17/2012 08:26	218	Suspicion Complaint
4510				
2012003297	MN0010000	08/17/2012 09:27	225	***No press***
23577 STATE HWY 47, AITKIN, 1929				
2012003298	MN0010000	08/17/2012 10:02	252	Accident
Aitkin, 0100				
2012003299	MN0010000	08/17/2012 10:01	225	Burglary/Theft
29939 391ST PL, AITKIN, 2430				
2012003300	MN0010000	08/17/2012 12:48	995	Ambulance Call
100 1ST AVE NE, Aitkin, 0100				
2012003301	MN0010000	08/17/2012 12:14	218	Trespass
37012 NATURE AVE, AITKIN, 3115				
2012003302	MN0010000	08/17/2012 13:57	252	Harassment Complaint
301 MINNESOTA AVE S, Aitkin, 0100				
2012003303	MN0010000	08/17/2012 16:17	218	Trespass
19378 520TH LN, MCGREGOR, 4504				

Aitkin County Sheriff's Office

Printed On: Thu, Aug 23, 2012

Incident Log Report

Case Number	NCIC	Date Reported	Officer	Offense
2012003304	MN0010000	08/17/2012 16:40	252	Gas drive off
1 MINNESOTA AVE S, Aitkin, 0100				
2012003305	MN0010000	08/17/2012 17:01	208	Burglary/Theft
41561 STATE HWY 65, MCGREGOR, 3825				
2012003306	MN0010000	08/17/2012 19:08	264	Suspicion Complaint
150 N Main St, Hill City, 0200				
2012003307	MN0010000	08/17/2012 17:14	98989	Property Damage
18522 478TH LN, MCGREGOR, 4527				
2012003308	MN0010000	08/17/2012 19:55	208	Harassment Complaint
34057 DOVE ST, AITKIN, 2413				
2012003309	MN0010000	08/17/2012 21:15	219	Suspicion Complaint
39625 DEER ST, AITKIN, 2936				
2012003310	MN0010000	08/17/2012 22:01	224	Alarm
18040 526TH ST, MCGREGOR, 5134				
2012003311	MN0010000	08/17/2012 22:17	499	Ambulance Call
36436 196TH PL, MCGREGOR, 3321				
2012003312	MN0010000	08/18/2012 01:18	219	Fire Call
308 2nd St NE, Aitkin, 0100				
2012003313	MN0010000	08/18/2012 02:57	219	Disturbance
38384 290TH ST, AITKIN, 2429				
2012003314	MN0010000	08/18/2012 04:46	995	Ambulance Call
43671 236TH LN, AITKIN, 1728				
2012003315	MN0010000	08/18/2012 07:34	225	Burglary/Theft
21780 442ND PL, AITKIN, 1735				
2012003316	MN0010000	08/18/2012 08:09	252	Alarm
101 MINNESOTA AVE N, Aitkin, 0100				
2012003317	MN0010000	08/18/2012 09:29	225	Property Damage
3000				
2012003318	MN0010000	08/18/2012 10:32	208	Disturbance
200 BUNKER HILL DR, Aitkin, 0100				
2012003319	MN0010000	08/18/2012 11:42	208	Suspicion Complaint
36637 US HWY 169, AITKIN, 3019				
2012003320	MN0010000	08/18/2012 10:43	225	Property Damage
21927 US HWY 169, AITKIN, 1734				
2012003321	MN0010000	08/18/2012 13:10	208	Property Missing and Found
40473 347TH LN, AITKIN, 2936				
2012003322	MN0010000	08/18/2012 13:17	sp383	Suspicion Complaint
1534				

Aitkin County Sheriff's Office

Printed On: Thu, Aug 23, 2012

Incident Log Report

<i>Case Number</i>	<i>NCIC</i>	<i>Date Reported</i>	<i>Officer</i>	<i>Offense</i>
2012003323 160TH ST, / 180TH AVE	MN0010000	08/18/2012 13:17	sp383	***void***
2012003324 5423	MN0010000	08/18/2012 15:09	HCFD	Fire Call
2012003325 2nd St NE, Aitkin, 0100	MN0010000	08/18/2012 15:17	252	Driving Complaint
2012003326 610 AIR PARK DR, AITKIN, 0100	MN0010000	08/18/2012 16:33	252	Threat Complaint
2012003327 48077 STATE HWY 65, 4519	MN0010000	08/18/2012 17:05	499	Accident
2012003328 35588 387th Ave, 3000	MN0010000	08/18/2012 18:23	219	Property Damage
2012003329 21685 484TH LN, MCGREGOR, 4519	MN0010000	08/18/2012 19:33	498	Ambulance Call
2012003330 508 5TH ST NW, Aitkin, 0100	MN0010000	08/18/2012 20:40	256	Suspicion Complaint
2012003331 1716	MN0010000	08/18/2012 21:16	219	Traffic Stop
2012003332 20062 124th Ln, 1120	MN0010000	08/18/2012 22:18	224	Alarm
2012003333 1932	MN0010000	08/19/2012 00:21	224	Traffic Stop
2012003334 27000 110TH ST, 1031	MN0010000	08/19/2012 02:06	219	Assault
2012003335 2533	MN0010000	08/19/2012 03:47	224	Traffic Stop
2012003336 22027 420TH ST, MCGREGOR, 0500	MN0010000	08/19/2012 06:01	498	Ambulance Call
2012003337 35204 330TH AVE, AITKIN, 3129	MN0010000	08/19/2012 06:18	AFD	Fire Call
2012003338 23577 STATE HWY 47, AITKIN, 1929	MN0010000	08/19/2012 08:38	225	Warrant Arrest
2012003339 28269 432ND PL, AITKIN, 2333	MN0010000	08/19/2012 11:17	225	Alarm
2012003340 20540 STATE HWY 210, MCGREGOR, 3929	MN0010000	08/19/2012 13:12	498	Ambulance Call
2012003341 19069 484TH ST, 4522	MN0010000	08/19/2012 14:17	218	ATL/Welfare Check

Aitkin County Sheriff's Office

Printed On: Thu, Aug 23, 2012

Incident Log Report

<i>Case Number</i>	<i>NCIC</i>	<i>Date Reported</i>	<i>Officer</i>	<i>Offense</i>
2012003342 2729	MN0010000	08/19/2012 18:33	208	Property damage
2012003343 20453 465TH LN, MCGREGOR, 4532	MN0010000	08/19/2012 19:29	208	Burglary/Theft
2012003344 18345 DRIFTWOOD ST, MCGREGOR, 2710	MN0010000	08/19/2012 20:00	219	Suspicion Complaint
2012003345 Aitkin, 0100	MN0010000	08/19/2012 22:07	256	Suspicion Complaint
2012003346 105 2ND ST NW, Aitkin, 0100	MN0010000	08/19/2012 22:24	256	Disturbance
2012003347 SW OF 31633 230TH ST, mlk	MN0010000	08/19/2012 22:35	219	Boat and Water
2012003348 32034 KESTREL AVE, MCGREGOR, 2808	MN0010000	08/20/2012 00:44	208	Suspicion Complaint
2012003349 206 3rd St, McGrath, 0400	MN0010000	08/20/2012 01:17	5450	Ambulance Call
2012003350 Aitkin, 0100	MN0010000	08/20/2012 01:50	256	Assault
2012003351 44500 348TH LN, AITKIN, 2932	MN0010000	08/20/2012 05:13	219	Alarm
2012003352 28975 560TH ST, PALISADE, 4913	MN0010000	08/20/2012 08:09	995	Ambulance Call
2012003353 3634	MN0010000	08/20/2012 08:17	sp383	Accident
2012003354 19378 520TH LN, MCGREGOR, 4504	MN0010000	08/20/2012 09:38	217	Civil matter
2012003355 44889 238TH LN, AITKIN, 1729	MN0010000	08/20/2012 10:03	218	Theft
2012003356 850 2ND ST NW, Aitkin, 0100	MN0010000	08/20/2012 10:13	995	Ambulance Call
2012003357 2400	MN0010000	08/20/2012 10:30	217	Assist other county
2012003358 5231	MN0010000	08/20/2012 14:26	217	Motorist assist
2012003359 43576 244TH LN, AITKIN, 1721	MN0010000	08/20/2012 14:36	218	Misc public complaint
2012003360 39385 STATE HWY 18, AITKIN, 1830	MN0010000	08/20/2012 15:33	218	ATL/Welfare Check

Aitkin County Sheriff's Office

Printed On: Thu, Aug 23, 2012

Incident Log Report

Case Number	NCIC	Date Reported	Officer	Offense
2012003361	MN0010000	08/20/2012 16:54	498	Ambulance Call
Location 36436 196TH PL, MCGREGOR, 3321				
2012003362	MN0010000	08/20/2012 17:10	252	Ambulance Call
603 4TH ST NW, Aitkin, 0100				
2012003363	MN0010000	08/20/2012 17:34	208	Suspicion Complaint
po box 17370 Saint Paul MN. 55117				
2012003364	MN0010000	08/20/2012 19:00	252	Ambulance Call
315 1ST AVE SW				
2012003365	MN0010000	08/20/2012 19:06	315	Ambulance Call
217 2ND ST NW				
2012003366	MN0010000	08/20/2012 19:24	995	Accident
31410 235TH LN				
2012003367	MN0010000	08/20/2012 20:03	208	Suspicion Complaint
32368 408TH PL, AITKIN				
2012003368	MN0010000	08/20/2012 21:21	SAFR	Fire Call
Hwy 18				
2012003369	MN0010000	08/20/2012 19:42	208	ATL/Welfare Check
46477 US HWY 169, PALISADE				
2012003370	MN0010000	08/20/2012 21:16	219	Disturbance
29510 US Hwy 169				
2012003371	MN0010000	08/20/2012 22:06	256	Probation Violation
2012003372	MN0010000	08/20/2012 23:36	219	Driving Complaint
us hwy 169/370th ln				
2012003373	MN0010000	08/20/2012 23:01	219	Suspicion Complaint
11568 422ND ST, TAMARACK				
2012003374	MN0010000	08/21/2012 02:47	219	Trespass
10828 100TH LN, SANDSTONE				
2012003375	MN0010000	08/21/2012 04:06	MFD	Fire Call
22027 420TH ST, MCGREGOR				
2012003376	MN0010000	08/21/2012 08:41	225	Animal Complaint
27264 PADDY AVE, AITKIN				
2012003377	MN0010000	08/21/2012 09:49	255	Accident
200 BUNKER HILL DR				
2012003378	MN0010000	08/21/2012 09:53	218	Burglary/Theft
51290 221ST PL, MCGREGOR				
2012003379	MN0010000	08/21/2012 13:05	255	Burglary/Theft
222 2ND AVE NW				

Aitkin County Sheriff's Office

Printed On: Thu, Aug 23, 2012

Incident Log Report

<i>Case Number</i>	<i>NCIC</i>	<i>Date Reported</i>	<i>Officer</i>	<i>Offense</i>
2012003380	MN0010000	08/21/2012 14:49	498	Ambulance Call
<i>Location</i>				
18892 520TH LN, MCGREGOR				
2012003381	MN0010000	08/21/2012 15:30	5450	Ambulance Call
27345 150TH ST, ISLE				
2012003382	MN0010000	08/21/2012 17:48	252	susp activity
610 AIR PARK DR, AITKIN				
2012003383	MN0010000	08/21/2012 19:34	208	Disturbance
62642 WINDING RD, SWATARA				

Total Records: 134

Sue Bingham

From: Patrick Wussow [patrick.wussow@co.aitkin.mn.us]
Sent: Monday, August 20, 2012 12:12 PM
To: mark.wedel@co.aitkin.mn.us; laurie.westerlund@co.aitkin.mn.us; 'Brian Napstad'; 'Anne"Marcotte'; 'Niemi, Don'
Cc: 'Sue Bingham'; 'Mark Jacobs'; 'Terry Neff'; kpeysar@co.aitkin.mn.us; 'Jim Ratz'
Subject: Lake Minnewawa LID. - Follow up

Follow Up Flag: Follow up
Flag Status: Flagged

Commissioners:

On Friday August 17, 2012 County Auditor Kirk Peysar mailed out notices for a Lake Minnewawa Lake Improvement District (LID) public hearing to be held in September, however this morning the referendum petitioners submitted enough names to require a referendum vote.

This means that a referendum will take place in July or August of 2013, the public hearing scheduled for September 6th will not be held until after the referendum vote.

County Auditor Peysar will be sending a follow up notice to residents, this week. I will have copies of both letters in the Board correspondence file for your August 28th County Board meeting.

Please contact me if you have any questions.

Patrick Wussow
Aitkin County Administrator

NOTICE OF PUBLIC HEARING

AITKIN COUNTY BOARD OF COMMISSIONERS

**LAKE IMPROVEMENT DISTRICT
LAKE MINNEWAWA**

Notice is hereby given that on September 6, 2012, at 6:00p.m., the Aitkin County Board of Commissioners will hold a public hearing at the McGregor Community Center, in the City of McGregor, Minnesota, for the purpose of considering formation of a lake improvement district for Lake Minnewawa, located in Shamrock Township, in the County of Aitkin, Minnesota.

The establishment of the proposed lake improvement district requires review by the Commissioner of Natural Resources and the approval of the Aitkin County Board of Commissioners. Concerned citizens may submit evidence at a public hearing to be held prior to the passage of any resolution establishing the proposed lake improvement district. Concerned citizens may also submit evidence and opinions to the Commissioner of Natural Resources. A copy of the petition for the establishment of the lake improvement district is available for public review at the Office of the County Auditor, Aitkin County Courthouse, 209 Second Street Northwest, Aitkin, Minnesota. Or by calling 218-927-7354 or on-line at www.co.aitkin.mn.us

BY ORDER OF THE COUNTY BOARD.

Dated at Aitkin, Minnesota, this 14th day of August, 2012.

**Kirk Peysar
County Auditor**

**NOTICE OF STAY TO ESTABLISH A LAKE IMPROVEMENT
DISTRICT**

AITKIN COUNTY BOARD OF COMMISSIONERS

**LAKE IMPROVEMENT DISTRICT
LAKE MINNEWAWA**

Notice is hereby given that a petition to stay the process of establishing a lake improvement district has been received, reviewed, and qualified. The public hearing scheduled for September 6, 2012, at 6:00p.m. has been postponed pending the result of a referendum election to be held in either July or August 2013.

Information about the lake improvement district is available for public review at the Office of the County Auditor, Aitkin County Courthouse, 209 Second Street Northwest, Aitkin, Minnesota. Or by calling 218-927-7354 or on-line at www.co.aitkin.mn.us

BY ORDER OF THE COUNTY BOARD.

Dated at Aitkin, Minnesota, this 22nd day of August, 2012.

**Kirk Peysar
County Auditor**



Aitkin County Sheriff's Office
217 Second Street NW, Room 185
Aitkin, MN 56431
(218) 927-7435

**Incident Date Reported BETWEEN 08/08/12
And 08/14/12
And Incident NCIC=MN0010000**

Printed On: Thu, Aug 16, 2012

Incident Log Report

<i>Case Number</i>	<i>NCIC</i>	<i>Date Reported</i>	<i>Officer</i>	<i>Offense</i>
2012003131 Location 38421 STATE HWY 18, AITKIN, 1820	MN0010000	08/08/2012 00:45	212	Loud party/noise
2012003132 3rd St NW, Aitkin, 0100	MN0010000	08/08/2012 09:07	253	Accident
2012003133 66100 186TH PL, JACOBSON, 6322	MN0010000	08/08/2012 11:25	208	Alarm
2012003134 0900	MN0010000	08/08/2012 11:47	218	Probation Violation
2012003135 301 W HWY 210, McGregor, 0500	MN0010000	08/08/2012 14:25	208	Tampering with a motor vehicle
2012003136 32 CARR LN, McGregor, 0500	MN0010000	08/08/2012 14:29	208	Burglary/Theft
2012003137 163 1st St S, McGregor, 0500	MN0010000	08/08/2012 14:34	209	Property dispute other
2012003138 68172 198TH AVE, JACOBSON, 0300	MN0010000	08/08/2012 14:33	JFR	Ambulance Call
2012003139 18584 479TH LN, MCGREGOR, 4527	MN0010000	08/08/2012 14:54	498	Ambulance Call
2012003140 301 MINNESOTA AVE S, Aitkin, 0100	MN0010000	08/08/2012 15:45	AFD	Public assist
2012003141 35010 432ND PL, AITKIN, 2933	MN0010000	08/08/2012 16:22	219	Harassment Complaint
2012003142 21 1ST ST NW, Aitkin, 0100	MN0010000	08/08/2012 17:30	251	Disturbance
2012003143 32379 427TH ST, AITKIN, 3720	MN0010000	08/08/2012 17:51	498	Ambulance Call
2012003144 43370 STATE HWY 210, AITKIN, 2928	MN0010000	08/08/2012 18:47	995	Ambulance Call
2012003145 1000 MINNESOTA AVE S, Aitkin, 0100	MN0010000	08/08/2012 20:33	995	Ambulance Call
2012003146 Nelson Ave E, Tamarack, 0700	MN0010000	08/08/2012 20:44	209	Suspicion Complaint

Aitkin County Sheriff's Office

Printed On: Thu, Aug 16, 2012

Incident Log Report

Case Number	NCIC	Date Reported	Officer	Offense
2012003147	MN0010000	08/08/2012 20:56	216	Burglary/Theft
26715 590TH ST, PALISADE, 5632				
2012003148	MN0010000	08/08/2012 21:16	5450	Ambulance Call
18468 326TH AVE, ISLE, 1320				
2012003149	MN0010000	08/08/2012 21:58	219	Traffic Stop
1721				
2012003150	MN0010000	08/09/2012 00:29	498	Ambulance Call
21811 GOSHAWK ST, MCGREGOR, 3906				
2012003151	MN0010000	08/09/2012 00:21	207	Threat Complaint
43590 CONIFER ST, AITKIN, 1733				
2012003152	MN0010000	08/09/2012 02:11	207	Disturbance
18490 360TH ST, MCGREGOR, 3322				
2012003153	MN0010000	08/09/2012 05:54	995	Ambulance Call
31906 230TH ST, AITKIN, 1928				
2012003154	MN0010000	08/09/2012 07:01	498	Ambulance Call
44898 200TH AVE, MCGREGOR, 3909				
2012003155	MN0010000	08/09/2012 11:12	225	Disturbance
46554 US HWY 169, 4235				
2012003156	MN0010000	08/09/2012 12:53	217	Driving Complaint
50122 197TH AVE, 4509				
2012003157	MN0010000	08/09/2012 13:00	222	Disturbance
209 2ND ST NW, Aitkin, 0800				
2012003158	MN0010000	08/09/2012 11:15	217	Property Damage
36558 410TH AVE, AITKIN, 2924				
2012003159	MN0010000	08/09/2012 13:46	221	Disturbance
50297 405TH PL, PALISADE, 4112				
2012003160	MN0010000	08/09/2012 14:06	209	Burglary/Theft
300 N 5TH AVE, Palisade, 0600				
2012003161	MN0010000	08/09/2012 14:56	204	Animal Complaint
39959 US HWY 169, AITKIN, 3003				
2012003162	MN0010000	08/09/2012 15:19	221	Driving Complaint
49974 405TH PL, PALISADE, 4113				
2012003163	MN0010000	08/09/2012 19:08	251	Gas drive off
101 2ND ST NE, Aitkin, 0100				
2012003164	MN0010000	08/09/2012 19:26	216	Fire Call
21927 US HWY 169, AITKIN, 1705				
2012003165	MN0010000	08/09/2012 19:59	498	Ambulance Call
45315 STATE HWY 65, MCGREGOR, 3801				

Aitkin County Sheriff's Office

Printed On: Thu, Aug 16, 2012

Incident Log Report

Case Number	NCIC	Date Reported	Officer	Offense
2012003166	MN0010000	08/09/2012 22:44	255	Disturbance
610 AIR PARK DR, AITKIN, 0100				
2012003167	MN0010000	08/09/2012 22:35	216	Suspicion Complaint
12797 220th St, 2234				
2012003168	MN0010000	08/10/2012 10:23	225	Disturbance
50297 405TH PL, PALISADE, 4112				
2012003169	MN0010000	08/10/2012 10:38	210	Accident
210 MAIN ST, Palisade, 0600				
2012003170	MN0010000	08/10/2012 11:28	225	Burglary/Theft
204 MAIN ST, Palisade, 0600				
2012003171	MN0010000	08/10/2012 13:18	210	Traffic Stop
6000				
2012003172	MN0010000	08/10/2012 14:18	210	Driving complaint
4220				
2012003173	MN0010000	08/10/2012 15:11	217	Trespass
19378 520TH LN, MCGREGOR, 4504				
2012003174	MN0010000	08/10/2012 16:46	253	Driving Complaint
408 4TH ST NW, Aitkin, 0100				
2012003175	MN0010000	08/10/2012 16:49	253	Burglary/Theft
614 4TH ST NW, Aitkin, 0100				
2012003176	MN0010000	08/10/2012 17:46	498	Ambulance Call
47585 184TH AVE, MCGREGOR, 4527				
2012003177	MN0010000	08/10/2012 18:28	MFD	Fire Call
20534 487TH ST, MCGREGOR, 4520				
2012003178	MN0010000	08/10/2012 20:16	251	Disturbance
104 3RD ST NW, Aitkin, 0100				
2012003179	MN0010000	08/10/2012 20:22	207	Burglary/Theft
18522 478TH LN, MCGREGOR, 4527				
2012003180	MN0010000	08/10/2012 22:15	209	Traffic Stop
1733				
2012003181	MN0010000	08/10/2012 23:01	207	Disturbance
33972 DEER ST, AITKIN, 1801				
2012003182	MN0010000	08/11/2012 01:32	209	Probation violation
STATE HWY 65, 3320				
2012003183	MN0010000	08/11/2012 03:48	207	Suspicion Complaint
3821				
2012003184	MN0010000	08/11/2012 09:28	204	Public Assist
42106 310TH LN, AITKIN, 2315				

Aitkin County Sheriff's Office

Printed On: Thu, Aug 16, 2012

Incident Log Report

<i>Case Number</i>	<i>NCIC</i>	<i>Date Reported</i>	<i>Officer</i>	<i>Offense</i>
<i>Location</i>				
2012003185	MN0010000	08/11/2012 09:31	sp366	Accident
5013				
2012003186	MN0010000	08/11/2012 10:11	210	Burglary/Theft
35160 540TH LN, Hill City, 4825				
2012003187	MN0010000	08/11/2012 10:27	204	Animal Complaint
20733 PIKE AVE, AITKIN, 1707				
2012003188	MN0010000	08/11/2012 10:56	225	Animal Complaint
520th Ln, McGregor, 4534				
2012003189	MN0010000	08/11/2012 12:10	254	Property Missing and Found
35922 400TH AVE, AITKIN, 3030				
2012003190	MN0010000	08/11/2012 10:26	225	Property Damage
48494 197TH AVE, MCGREGOR, 4521				
2012003191	MN0010000	08/11/2012 13:27	206	Assist Other Department
405 4TH ST SE, Aitkin, 0100				
2012003192	MN0010000	08/11/2012 10:27	225	Burglary/Theft
47941 188TH AVE, MCGREGOR, 4527				
2012003193	MN0010000	08/11/2012 14:17	225	Suspicion Complaint
18043 476TH LN, MCGREGOR, 4525				
2012003194	MN0010000	08/11/2012 17:26	209	Animal Complaint
19650 650TH LN, JACOBSON, 5728				
2012003195	MN0010000	08/11/2012 18:22	500	Ambulance Call
34852 363RD PL, AITKIN, 3034				
2012003196	MN0010000	08/11/2012 19:39	255	Disturbance
104 3RD ST NW, Aitkin, 0100				
2012003197	MN0010000	08/11/2012 19:32	209	Threat Complaint
360th St, 3321				
2012003198	MN0010000	08/11/2012 20:22	498	Ambulance Call
34889 200TH AVE, MCGREGOR, 3333				
2012003199	MN0010000	08/11/2012 22:44	207	Suspicion Complaint
27032 420th Pl, 3830				
2012003200	MN0010000	08/12/2012 00:22	498	Ambulance Call
20215 485TH ST, MCGREGOR, 4520				
2012003201	MN0010000	08/12/2012 01:16	209	Assault
STATE HWY 65, / 363RD LN				
2012003202	MN0010000	08/12/2012 02:42	207	Disturbance
21760 442ND PL, AITKIN				
2012003203	MN0010000	08/12/2012 06:53	995	Ambulance Call
518 7TH AVE NE, AITKIN				

Aitkin County Sheriff's Office

Printed On: Thu, Aug 16, 2012

Incident Log Report

Case Number	NCIC	Date Reported	Officer	Offense
2012003204	MN0010000	08/12/2012 09:12	995	Ambulance Call
21927 US HWY 169, AITKIN				
2012003205	MN0010000	08/12/2012 09:18	498	Ambulance Call
39609 257TH AVE, MCGREGOR				
2012003206	MN0010000	08/12/2012 11:10	225	Vehicle in Ditch
363rd ln				
2012003207	MN0010000	08/12/2012 11:30	254	Burglary/Theft
508 5TH ST NW				
2012003208	MN0010000	08/12/2012 12:50	498	Ambulance Call
37078 NATURE AVE, AITKIN				
2012003209	MN0010000	08/12/2012 13:29	206	Ambulance Call
18027 476TH LN, MCGREGOR				
2012003210	MN0010000	08/12/2012 14:14	204	Child Custody
104 S HWY 65				
2012003211	MN0010000	08/12/2012 14:29	254	Warrant Arrest
2 MINNESOTA AVE S				
2012003212	MN0010000	08/12/2012 15:53	254	Traffic Stop
4th/Minn				
2012003213	MN0010000	08/12/2012 16:32	210	Threat Complaint
40792 NATURE AVE, AITKIN				
2012003214	MN0010000	08/12/2012 17:28	210	Assist Other Department
State Hwy 210				
2012003215	MN0010000	08/12/2012 18:48	254	Drug Offense
Tank Trails				
2012003216	MN0010000	08/12/2012 19:38	209	Burglary/Theft
29510 US HWY 169, AITKIN				
2012003217	MN0010000	08/12/2012 20:28	207	Burglary/Theft
39585 605TH ST, SWATARA				
2012003218	MN0010000	08/13/2012 00:40	255	ATL/Welfare Check
850 2ND ST NW				
2012003219	MN0010000	08/13/2012 02:26	209	Public Assist
Hwy 65				
2012003220	MN0010000	08/13/2012 06:22	162	Ambulance Call
41716 620TH LN, SWATARA				
2012003221	MN0010000	08/13/2012 07:44	204	ATL/Welfare Check
68172 198TH AVE, JACOBSON				
2012003222	MN0010000	08/13/2012 07:56	MFD	Alarm
22027 420TH ST, MCGREGOR				

Aitkin County Sheriff's Office

Printed On: Thu, Aug 16, 2012

Incident Log Report

Case Number	NCIC	Date Reported	Officer	Offense
2012003223	MN0010000	08/12/2012 21:04	206	Assist Other Department
2012003224	MN0010000	08/13/2012 10:22	210	Property Damage
		195 MAIN ST N		
2012003225	MN0010000	08/13/2012 11:28	204	Juvenile runaway
		17661 160TH LN, FINLAYSON, 1102		
2012003226	MN0010000	08/13/2012 12:14	206	Fraud/ID Theft
		22433 519TH LN, MCGREGOR		
2012003227	MN0010000	08/13/2012 13:18	210	Burglary/Theft
		101 STATE HWY 200 E		
2012003228	MN0010000	08/13/2012 13:52	210	Disturbance
		42476 STATE HWY 210, AITKIN		
2012003229	MN0010000	08/13/2012 14:25	995	Ambulance Call
		39625 DEER ST, AITKIN		
2012003230	MN0010000	08/13/2012 14:17	210	Other (Start Code)
		39625 DEER ST, AITKIN		
2012003231	MN0010000	08/13/2012 18:48	253	Probation Violation
		Cedar Lake Public Access		
2012003232	MN0010000	08/13/2012 19:38	207	Missing Person
		50967 202ND PL, MCGREGOR		
2012003233	MN0010000	08/13/2012 19:29	209	Boat and Water
		Mille Lacs Lake		
2012003234	MN0010000	08/13/2012 19:43	207	Boat and Water
		50624 STATE HWY 65, MCGREGOR, 4412		
2012003235	MN0010000	08/13/2012 21:12	255	Suspicion Complaint
		315 1ST AVE SW		
2012003236	MN0010000	08/14/2012 01:23	255	Alarm
		190 SOUTHGATE DR		
2012003237	MN0010000	08/14/2012 06:41	204	Alarm
		44929 285TH LN, AITKIN		
2012003238	MN0010000	08/14/2012 10:03	254	ATL/Welfare Check
		200 BUNKER HILL DR		
2012003239	MN0010000	08/14/2012 11:18	204	Trespass
		37810 370TH LN, AITKIN		
2012003240	MN0010000	08/14/2012 12:09	995	Ambulance Call
		38665 STATE HWY 47, AITKIN		
2012003241	MN0010000	08/14/2012 14:14	209	Other (Start Code)
		54246 LOON AVE, MCGREGOR		

Aitkin County Sheriff's Office

Printed On: Thu, Aug 16, 2012

Incident Log Report

<i>Case Number</i>	<i>NCIC</i>	<i>Date Reported</i>	<i>Officer</i>	<i>Offense</i>
2012003242	MN0010000	08/14/2012 15:15	210	Disturbance
<i>Location</i> Big Pine Lake				
2012003243	MN0010000	08/14/2012 17:00	223	Disturbance
20849 370TH LN, MCGREGOR				
2012003244	MN0010000	08/14/2012 17:38	253	Other (Start Code)
1st ave ne				
2012003245	MN0010000	08/14/2012 18:20	498	Ambulance Call
20465 465TH LN, MCGREGOR				
2012003246	MN0010000	08/14/2012 18:22	253	Disturbance
215 3RD ST SE				
2012003247	MN0010000	08/14/2012 19:14	216	Criminal Sexual Conduct
39625 DEER ST, AITKIN				
2012003248	MN0010000	08/14/2012 20:16	MFD	Fire Call
290th pl				
2012003249	MN0010000	08/14/2012 20:49	207	Suspicion Complaint
184th ave				

Total Records: 119

Sue Bingham

From: Patrick Wussow [patrick.wussow@co.aitkin.mn.us]
Sent: Friday, August 24, 2012 3:59 PM
To: 'Sue Bingham'
Subject: Special Session Disaster Relief Bill
Attachments: 2012 1st SS BILL.pdf; Untitled attachment 00013.htm; 2012 1st SS SPRDSHT.pdf; Untitled attachment 00016.htm

Sue

Please make sure this is in the Board correspondence.

Thank you

Patrick

From: Brian Napstad [<mailto:bnapstad@yahoo.com>]
Sent: Wednesday, August 22, 2012 9:28 PM
To: Patrick Wussow
Subject: Fwd: Special Session Disaster Relief Bill

Pat,

Here are the disaster bills as per agreed to between the Gov and Legislature.

Brian

Sent from my iPad

Begin forwarded message:

From: "Jaschke, John (BWSR)" <john.jaschke@state.mn.us>
Date: August 22, 2012 8:23:08 PM CDT
To: "Brian Napstad (bnapstad@yahoo.com)" <bnapstad@yahoo.com>
Subject: Special Session Disaster Relief Bill

Brian: the Special Session Disaster Relief Bill is attached.

From: Alex Smith [Alex.Smith@house.mn]
Sent: Wednesday, August 22, 2012 5:29 PM
To: Ways and Means Committee
Cc: Alex Smith; Amy Williams; Ana Bahr; Andy Leer; Anna Fournier; Brian Theis; Chelsea Thompson; Cyndee Fields; Elizabeth Mandelman; Gabrielle Soojian; Jan Horner; Joan Harrison; Kathy Anderson; Kileen Lindgren; Krysta Niedernhofer; Lill Pohikamp; Linda Westrom; Mary Faust; Mike Harris; Mitzi Ellis; Nanette Moloney; Peter Glessing; Rebecca Lowden; Rebecca Peichel
Subject: Committee on Ways and Means, Friday, August 24, 2012

The agreed upon language and spreadsheet are now posted online and attached to this email.

Committee on Ways and Means
Chair: Rep. Mary Liz Holberg

MEETING: Friday, August 24, 2012
09:00 AM
200 State Office Building

AGENDA

- I. Call to Order
- II. Roll Call
- III. Approval of Minutes
- IV. Special Session Disaster Relief Bill

If you would like to testify, please contact Dan Dwight at daniel.dwight@house.mn or 651-296-5385 by 4:00 P.M. on Thursday, August 23.

V. Adjournment

Alex Smith
Committee Legislative Assistant
Ways and Means
Rep. Mary Liz Holberg
651-296-3889
Alex.Smith@house.mn

You are currently subscribed to ways as: john.jaschke@state.mn.us
To unsubscribe send a blank email to leave-142391-359621.457f54f35cc7735c2ea9060edb671732@ww3.house.leg.state.mn.us

- 1.1 A bill for an act
- 1.2 relating to disaster assistance; authorizing spending to acquire and better public
- 1.3 land and buildings and other improvements of a capital nature with certain
- 1.4 conditions; authorizing the sale and issuance of state bonds; providing flood loss
- 1.5 aid and property tax relief; transferring and cancelling prior appropriations;
- 1.6 appropriating money for flood and windstorm relief; amending Minnesota
- 1.7 Statutes 2010, sections 12A.07, by adding a subdivision; 12A.09, by adding
- 1.8 a subdivision; 116J.8731, by adding subdivisions; Minnesota Statutes 2011
- 1.9 Supplement, section 12A.07, subdivision 2; Laws 2009, chapter 172, article 4,
- 1.10 section 2, subdivision 5; Laws 2011, First Special Session chapter 6, article 4,
- 1.11 section 2, subdivision 6.

1.12 BE IT ENACTED BY THE LEGISLATURE OF THE STATE OF MINNESOTA:

1.13 **ARTICLE 1**

1.14 **FLOOD DISASTER RELIEF**

1.15 **Section 1. DISASTER RELIEF APPROPRIATION SUMMARY.**

1.16 The amounts shown in this section summarize direct appropriations made in this

1.17 article.

1.18 **SUMMARY**

1.19 <u>Public Safety</u>	\$ <u>25,975,000</u>
1.20 <u>Transportation</u>	<u>79,000,000</u>
1.21 <u>Employment and Economic Development</u>	<u>15,000,000</u>
1.22 <u>Public Facilities Authority</u>	<u>6,000,000</u>
1.23 <u>Housing Finance</u>	<u>12,720,000</u>
1.24 <u>Historical Society</u>	<u>250,000</u>
1.25 <u>Natural Resources</u>	<u>18,855,000</u>
1.26 <u>Board of Water and Soil Resources</u>	<u>12,500,000</u>
1.27 <u>Agriculture</u>	<u>600,000</u>
1.28 <u>Education</u>	<u>761,000</u>

2.1	<u>Health</u>		<u>565,000</u>
2.2	<u>Bond Sale Expenses</u>		<u>101,000</u>
2.3	<u>Transfers, Reductions, and Cancellations</u>		<u>(12,671,000)</u>
2.4	<u>TOTAL</u>	\$	<u>159,656,000</u>
2.5	<u>General Fund</u>		<u>67,586,000</u>
2.6	<u>Bond Proceeds Fund</u>		<u>25,701,000</u>
2.7	<u>State Transportation Fund</u>		<u>30,000,000</u>
2.8	<u>Trunk Highway Fund</u>		<u>14,000,000</u>
2.9	<u>Trunk Highway Fund Bond Proceeds Account</u>		<u>35,040,000</u>
2.10	<u>Transfers, Reductions, and Cancellations</u>		<u>(12,671,000)</u>

2.11 **Sec. 2. DISASTER RELIEF APPROPRIATIONS.**

2.12 Subdivision 1. Appropriations. The sums shown in the column under

2.13 "Appropriations" are appropriated from the bond proceeds fund to be spent to acquire and

2.14 to better publicly owned land and buildings and other public improvements of a capital

2.15 nature, and from other named funds, for relief as specified in this article from the storms

2.16 and flooding that occurred on or after June 14, 2012, in the area in Minnesota designated

2.17 under Presidential Declaration of a Major Disaster FEMA-4069-DR, whether included in

2.18 the original declarations or added later by federal government action, referred to in this

2.19 article as "the area included in DR-4069." The flooding that resulted from storms that

2.20 occurred June 14 through June 21, 2012, is referred to as "the floods" in sections 19 to

2.21 22. Unless otherwise specified, money appropriated in this act for a capital program or

2.22 project may be used to pay state agency staff costs that are attributed directly to the capital

2.23 program or project in accordance with accounting policies adopted by the commissioner

2.24 of management and budget. Unless otherwise specified, the appropriations included in this

2.25 article are available through June 30, 2015, except that appropriations of bond proceeds

2.26 for capital improvements are available until the project is completed or abandoned, subject

2.27 to Minnesota Statutes, section 16A.642. The appropriations in this article are onetime.

2.28 Subd. 2. Transfers. Money appropriated under this article may be transferred as

2.29 provided in Minnesota Statutes, section 12A.03, subdivision 5.

2.30

APPROPRIATIONS

2.31 **Sec. 3. PUBLIC SAFETY**

2.32 Subdivision 1. Total Appropriation

\$ **25,975,000**

2.33 Appropriations by Fund

2.34 General 23,690,000

2.35 Bond Proceeds 2,285,000

- 3.1 To the commissioner of public safety for the
- 3.2 purposes specified in Minnesota Statutes,
- 3.3 section 12A.15. The amounts that may be
- 3.4 spent for each purpose are specified in the
- 3.5 following subdivisions.
- 3.6 Subd. 2. **State Match for Public Assistance** 24,975,000
- 3.7 The appropriation of \$22,690,000 from the
- 3.8 general fund under Minnesota Statutes,
- 3.9 section 12A.15, subdivision 1, is available
- 3.10 to fund 100 percent of the match obligations
- 3.11 for eligible applicants incurred through the
- 3.12 receipt of federal disaster assistance.
- 3.13 The appropriation of \$2,285,000 from
- 3.14 the bond proceeds fund under Minnesota
- 3.15 Statutes, section 12A.15, subdivision 1, is
- 3.16 available to fund 100 percent of the state
- 3.17 and local match obligations for publicly
- 3.18 owned capital improvement projects incurred
- 3.19 through the receipt of federal disaster
- 3.20 assistance.
- 3.21 Notwithstanding Minnesota Statutes, section
- 3.22 16A.28, the appropriation in this subdivision
- 3.23 does not lapse.
- 3.24 Subd. 3. **Grants for Debris Removal and Burial** 500,000
- 3.25 For grants to counties for costs related to the
- 3.26 burial and removal of debris for residences
- 3.27 and farms, as specified in Minnesota
- 3.28 Statutes, section 12A.15, subdivision 2. This
- 3.29 appropriation is from the general fund.
- 3.30 Subd. 4. **Long-term Recovery Assistance** 500,000
- 3.31 To provide technical assistance and grants
- 3.32 for coordination of long-term recovery as
- 3.33 specified in Minnesota Statutes, section

4.1 12A.15, subdivision 2a. This appropriation
4.2 is from the general fund.

4.3 **Sec. 4. TRANSPORTATION**

4.4 **Subdivision 1. Total Appropriation** \$ 79,000,000

<u>Appropriations by Fund</u>	
4.6 <u>Trunk Highway</u>	<u>14,000,000</u>
4.7 <u>Fund</u>	
4.8 <u>Trunk Highway</u>	
4.9 <u>Fund Bond Proceeds</u>	
4.10 <u>Account</u>	<u>35,000,000</u>
4.11 <u>State Transportation</u>	
4.12 <u>Fund</u>	<u>30,000,000</u>

4.13 To the commissioner of transportation for
4.14 the purposes specified in Minnesota Statutes,
4.15 section 12A.16. The amounts that may be
4.16 spent for each purpose are specified in the
4.17 following subdivisions.

4.18 **Subd. 2. Transportation Infrastructure** 3,000,000
4.19 **Operation and Maintenance**

4.20 From the trunk highway fund, for the
4.21 purposes specified in Minnesota Statutes,
4.22 section 12A.16, subdivision 1. This is in
4.23 addition to the appropriation made in Laws
4.24 2011, First Special Session chapter 3, article
4.25 1, section 3, subdivision 3, paragraph (a).

4.26 **Subd. 3. Program Planning and Delivery** 11,000,000

4.27 From the trunk highway fund for the
4.28 purposes stated in Minnesota Statutes,
4.29 section 12A.16, subdivision 2. This is in
4.30 addition to the appropriation made in Laws
4.31 2011, First Special Session chapter 3, article
4.32 1, section 3, subdivision 3, paragraph (b).

4.33 **Subd. 4. State Trunk Highways and Bridges** 35,000,000

4.34 From the bond proceeds account in the trunk
4.35 highway fund for the purposes specified

- 5.1 in Minnesota Statutes, section 12A.16.
- 5.2 subdivision 2.
- 5.3 Subd. 5. Local Road and Bridge Reconstruction 30,000,000
- 5.4 From the bond proceeds account in the
- 5.5 state transportation fund for grants under
- 5.6 Minnesota Statutes, sections 12A.16,
- 5.7 subdivision 3, and 174.50, to local
- 5.8 governments in the area included in
- 5.9 DR-4069.
- 5.10 Sec. 5. EMPLOYMENT AND ECONOMIC
- 5.11 DEVELOPMENT \$ 15,000,000
- 5.12 Minnesota Investment Fund
- 5.13 From the general fund to the commissioner
- 5.14 of employment and economic development
- 5.15 for Minnesota investment fund grants under
- 5.16 Minnesota Statutes, section 12A.07.
- 5.17 Before any grants under this section are
- 5.18 awarded to a local unit of government,
- 5.19 the commissioner of employment and
- 5.20 economic development shall report to the
- 5.21 chairs and ranking minority members of
- 5.22 the senate Finance Committee and house of
- 5.23 representatives Ways and Means Committee
- 5.24 the criteria and requirements to be used
- 5.25 by local units of government in the grant
- 5.26 or loan programs they will administer. All
- 5.27 business loan agreements must be executed
- 5.28 by December 31, 2013. Any uncommitted
- 5.29 balance remaining must be transferred to the
- 5.30 general fund.
- 5.31 Sec. 6. PUBLIC FACILITIES AUTHORITY \$ 6,000,000
- 5.32 Disaster Relief Facilities Grants

6.1 To the Public Facilities Authority from
6.2 the bond proceeds fund for grants under
6.3 Minnesota Statutes, section 12A.14.

6.4 **Sec. 7. HOUSING FINANCE**

6.5 Subdivision 1. **Total Appropriation** **\$** **12,720,000**

6.6 To the Housing Finance Agency for
6.7 the purposes specified in the following
6.8 subdivisions.

6.9 **Subd. 2. Economic Development and Housing**
6.10 **Challenge Program**

12,220,000

6.11 From the general fund for transfer to the
6.12 housing development fund for the economic
6.13 development and housing challenge program
6.14 under Minnesota Statutes, section 462A.33,
6.15 for assistance in the area included in
6.16 DR-4069, as provided in Minnesota Statutes,
6.17 section 12A.09. The maximum loan amount
6.18 per housing structure is \$30,000. Within
6.19 the limits of available appropriations, the
6.20 agency may increase the maximum amount
6.21 if the cost of repair or replacement of
6.22 the residential property exceeds the total
6.23 of the maximum loan amount and any
6.24 assistance available from FEMA, other
6.25 federal government agencies including the
6.26 Small Business Administration, and private
6.27 insurance and flood insurance benefits.
6.28 **Subd. 3. Capacity Building Grants** 250,000
6.29 From the general fund for transfer to the
6.30 housing development fund for the capacity
6.31 building grant program under Minnesota
6.32 Statutes, section 462A.21, subdivision
6.33 3. To provide capacity for local units of
6.34 government and nonprofit organizations to

- 7.1 develop and implement disaster recovery
- 7.2 plans in the area included in DR-4069 and as
- 7.3 provided under Minnesota Statutes, section
- 7.4 12A.09.
- 7.5 **Subd. 4. Family Homeless Prevention and**
- 7.6 **Assistance** 250,000
- 7.7 From the general fund for the family
- 7.8 homeless prevention and assistance program
- 7.9 under Minnesota Statutes, section 462A.204,
- 7.10 for assistance in the area included in
- 7.11 DR-4069, in counties for which Small
- 7.12 Business Administration assistance to
- 7.13 homeowners is available. For assistance
- 7.14 under this subdivision, the requirements
- 7.15 of Minnesota Statutes, section 12A.03,
- 7.16 subdivisions 2 to 5, apply.
- 7.17 **Sec. 8. MINNESOTA HISTORICAL**
- 7.18 **SOCIETY** \$ 250,000
- 7.19 To the Minnesota Historical Society for
- 7.20 activities under Minnesota Statutes, section
- 7.21 12A.11. This appropriation is from the
- 7.22 general fund.
- 7.23 **Sec. 9. NATURAL RESOURCES**
- 7.24 **Subdivision 1. Total appropriation** \$ 18,855,000
- 7.25 Appropriations by Fund
- 7.26 General 3,000,000
- 7.27 Bond Proceeds 15,855,000
- 7.28 To the commissioner of natural resources for
- 7.29 the purposes specified in Minnesota Statutes,
- 7.30 section 12A.12. The amounts that may be
- 7.31 spent for each purpose are specified in the
- 7.32 following subdivisions.
- 7.33 **Subd. 2. Facility and Natural Resource**
- 7.34 **Damage** 6,855,000

- 8.1 From the bond proceeds fund for the
- 8.2 purposes specified in Minnesota Statutes,
- 8.3 section 12A.12, subdivision 1.
- 8.4 Subd. 3. **Flood Hazard Mitigation Grants** 10,000,000
- 8.5 For the purposes specified in Minnesota
- 8.6 Statutes, section 12A.12, subdivision 2.
- 8.7 Funds may be used to acquire or relocate
- 8.8 structures damaged or threatened by the
- 8.9 impacts resulting from the rain storm and
- 8.10 are also available for the local share of
- 8.11 acquisition and relocation flood mitigation
- 8.12 projects. Of this appropriation, \$9,000,000 is
- 8.13 from the bond proceeds fund and \$1,000,000
- 8.14 is from the general fund.
- 8.15 Subd. 4. **Debris Removal; Public Waters** 2,000,000
- 8.16 For expenditures and grants for the purposes
- 8.17 of Minnesota Statutes, section 12A.12,
- 8.18 subdivision 3. This includes removal of flood
- 8.19 debris and sediment. This appropriation is
- 8.20 from the general fund.
- 8.21 Subd. 5. **Grant Extension**
- 8.22 Any existing state grant agreement of the
- 8.23 commissioner of natural resources in the
- 8.24 disaster area may be extended for up to two
- 8.25 years.
- 8.26 Sec. 10. **BOARD OF WATER AND SOIL**
- 8.27 **RESOURCES**
- 8.28 Subdivision 1. **Total Appropriation** \$ 12,500,000
- 8.29 To the Board of Water and Soil Resources for
- 8.30 the purposes specified in Minnesota Statutes,
- 8.31 section 12A.05. The appropriations in this
- 8.32 section do not lapse, notwithstanding the
- 8.33 provisions of Minnesota Statutes, section
- 8.34 16A.28. The amounts that may be spent for

- 9.1 each purpose are specified in the following
- 9.2 subdivisions.
- 9.3 Subd. 2. **Reinvest in Minnesota (RIM)**
- 9.4 **Conservation Easements** 1,500,000
- 9.5 From the bond proceeds fund for the
- 9.6 purposes specified in Minnesota Statutes,
- 9.7 section 12A.05, subdivision 1, in the area
- 9.8 included in DR-4069. The duration of the
- 9.9 easements shall be perpetual.
- 9.10 Subd. 3. **Erosion, Sediment, and Water Quality**
- 9.11 **Control Cost-Share Program** 11,000,000
- 9.12 From the general fund for the purposes
- 9.13 specified in Minnesota Statutes, section
- 9.14 12A.05, subdivision 2, in the area included
- 9.15 in DR-4069. Priority use of these funds shall
- 9.16 be to supplement or match federal funds
- 9.17 whenever possible and practical.
- 9.18 **Wetland conservation procedures.** For
- 9.19 projects funded in this section, the board may
- 9.20 develop alternative standards and procedures
- 9.21 for Minnesota Statutes, sections 103G.222 to
- 9.22 103G.2242, that may be used temporarily by
- 9.23 local government units to address emergency
- 9.24 situations or disaster recovery efforts in the
- 9.25 area included in DR-4069.
- 9.26 Sec. 11. **AGRICULTURE** \$ 600,000
- 9.27 To the commissioner of agriculture for the
- 9.28 purposes specified in Minnesota Statutes,
- 9.29 section 12A.04. This appropriation is from
- 9.30 the general fund.
- 9.31 Sec. 12. **EDUCATION**
- 9.32 Subdivision 1. **Total Appropriation** \$ 761,000

- 10.1 From the general fund to the commissioner
- 10.2 of education for additional costs and loss of
- 10.3 pupil units in the area included in DR-4069.
- 10.4 The amounts that may be spent for each
- 10.5 purpose are specified in the following
- 10.6 subdivisions.
- 10.7 Subd. 2. **Disaster Enrollment Impact Aid** 61,000
- 10.8 For disaster enrollment impact aid under
- 10.9 Minnesota Statutes, section 12A.06,
- 10.10 subdivision 1, calculated at a rate of \$5,224
- 10.11 per adjusted pupil unit lost during fiscal year
- 10.12 2013.
- 10.13 Subd. 3. **Disaster Relief Facilities Grants** 700,000
- 10.14 For disaster relief facilities grants under
- 10.15 Minnesota Statutes, section 12A.06,
- 10.16 subdivision 2.
- 10.17 Sec. 13. **HEALTH** \$ 565,000
- 10.18 To the commissioner of health for public
- 10.19 health activities under Minnesota Statutes,
- 10.20 section 12A.08. This appropriation is from
- 10.21 the general fund.
- 10.22 Sec. 14. **POLLUTION CONTROL AGENCY**
- 10.23 Consistent with Minnesota Statutes, section
- 10.24 12A.13, the commissioner may use the
- 10.25 petroleum tank release cleanup fund at
- 10.26 an estimated cost of \$100,000 to safely
- 10.27 rehabilitate buildings if a portion of the
- 10.28 rehabilitation cost is attributable to petroleum
- 10.29 contamination or to buy out property
- 10.30 substantially damaged by a petroleum tank
- 10.31 release.
- 10.32 Sec. 15. **BOND SALE EXPENSES** \$ 101,000

- 11.1 (a) \$61,000 is from the bond proceeds fund to
- 11.2 the commissioner of management and budget
- 11.3 for bond sale expenses under Minnesota
- 11.4 Statutes, section 16A.641, subdivision 8.
- 11.5 (b) \$40,000 is from the bond proceeds
- 11.6 account in the trunk highway fund to the
- 11.7 commissioner of management and budget
- 11.8 for bond sale expenses under Minnesota
- 11.9 Statutes, section 167.50, subdivision 4.
- 11.10 **Sec. 16. BOND SALE AUTHORIZATIONS.**
- 11.11 **Subdivision 1. Bond proceeds fund.** To provide the money appropriated in this
- 11.12 article from the bond proceeds fund, the commissioner of management and budget, at the
- 11.13 request of the commissioner of public safety, shall sell and issue bonds of the state in an
- 11.14 amount up to \$25,701,000 in the manner, upon the terms, and with the effect prescribed by
- 11.15 Minnesota Statutes, sections 16A.631 to 16A.675, and by the Minnesota Constitution,
- 11.16 article XI, sections 4 to 7.
- 11.17 **Subd. 2. Transportation fund.** To provide the money appropriated in this article
- 11.18 from the state transportation fund, the commissioner of management and budget shall sell
- 11.19 and issue bonds of the state in an amount up to \$30,000,000 in the manner, upon the terms,
- 11.20 and with the effect prescribed by Minnesota Statutes, sections 16A.631 to 16A.675, and by
- 11.21 the Minnesota Constitution, article XI, sections 4 to 7. The proceeds of the bonds, except
- 11.22 accrued interest and any premium received on the sale of the bonds, must be credited to
- 11.23 a bond proceeds account in the state transportation fund.
- 11.24 **Subd. 3. Trunk highway fund bond proceeds account.** To provide the money
- 11.25 appropriated in this act from the bond proceeds account in the trunk highway fund, the
- 11.26 commissioner of management and budget shall sell and issue bonds of the state in an
- 11.27 amount up to \$35,040,000 in the manner, upon the terms, and with the effect prescribed
- 11.28 by Minnesota Statutes, sections 167.50 to 167.52, and by the Minnesota Constitution,
- 11.29 article XIV, section 11, at the times and in the amounts requested by the commissioner
- 11.30 of transportation. The proceeds of the bonds, except accrued interest and any premium
- 11.31 received from the sale of the bonds, must be credited to the bond proceeds account in
- 11.32 the trunk highway fund.

- 12.1 Sec. 17. Minnesota Statutes 2011 Supplement, section 12A.07, subdivision 2, is amended to read:
- 12.2
- 12.3 Subd. 2. **Assistance.** Criteria and requirements must be locally established with
- 12.4 the approval of the commissioner. Local plans must specify the type of assistance to
- 12.5 be provided to eligible organizations. Within the limits of the available grant amounts,
- 12.6 assistance may be provided as loans with or without interest and as forgivable loans. The
- 12.7 criteria must, at a minimum, specify that an organization receiving a forgivable loan
- 12.8 must remain in the local community a minimum of five years after the date of the loan,
- 12.9 after which the amount of loan forgiveness must follow a schedule provided by the
- 12.10 commissioner for an additional five years. Loans made under this section must not be used
- 12.11 to refinance debt that existed on the date of the disaster. Repayment of loan amounts is
- 12.12 made to the local community consistent with subdivision 6. All assistance awards under
- 12.13 this section must meet the requirements of section 116J.8731, subdivision 8.
- 12.14 Sec. 18. Minnesota Statutes 2010, section 12A.07, is amended by adding a subdivision
- 12.15 to read:
- 12.16 Subd. 6. **Repayments.** Any repayments of loans to the local government unit
- 12.17 under this section shall be forwarded to the commissioner and deposited in the disaster
- 12.18 contingency account in section 116J.8731, subdivision 8.
- 12.19 Sec. 19. Minnesota Statutes 2010, section 12A.09, is amended by adding a subdivision
- 12.20 to read:
- 12.21 Subd. 5. **Repayments.** Any repayments of loans made under this section must be
- 12.22 deposited in the Housing Finance Agency's disaster relief contingency fund established in
- 12.23 section 462A.21, subdivision 29.
- 12.24 Sec. 20. Minnesota Statutes 2010, section 116J.8731, is amended by adding a
- 12.25 subdivision to read:
- 12.26 Subd. 8. **Disaster contingency account; repayments.** There is created a Minnesota
- 12.27 investment fund disaster contingency account in the special revenue fund. Repayment
- 12.28 of loan amounts to the local government unit under this section shall be forwarded to
- 12.29 the commissioner and deposited in the disaster contingency account in the Minnesota
- 12.30 investment fund to be appropriated by law for future disaster relief.
- 12.31 Sec. 21. Minnesota Statutes 2010, section 116J.8731, is amended by adding a
- 12.32 subdivision to read:

- 13.1 Subd. 9. Requirements for assistance. All awards under subdivision 8 are subject
- 13.2 to the following requirements.
- 13.3 (a) Eligible applicants include the following:
- 13.4 (1) Applicants may be any business or nonprofit organization in the area included
- 13.5 in the disaster declaration that was directly and adversely affected by the disaster. This
- 13.6 includes: businesses, cooperatives, utilities, industrial, commercial, retail, and nonprofit
- 13.7 organizations, including those nonprofits that provide residential, health care, child care,
- 13.8 social, or other services on behalf of the Department of Human Services to residents
- 13.9 included in the disaster area.
- 13.10 (2) Business applicants must be organized as a proprietorship, partnership, LLC, or
- 13.11 a corporation.
- 13.12 (3) Applicants must have been in operation before the date of the disaster.
- 13.13 (b) Eligible activities. Loan funds may be used to assist businesses only in their
- 13.14 recovery efforts but are not available to provide relief from economic losses.
- 13.15 (c) Eligible costs. Eligible costs may include the following: repair of buildings,
- 13.16 leasehold improvements, fixtures and/or equipment, loss of inventory, and cleanup costs.
- 13.17 (d) Ineligible activities:
- 13.18 (1) Ineligible applicants. Any applicants not meeting the eligibility requirements
- 13.19 outlined in this subdivision are ineligible to receive recovery loan funds.
- 13.20 (2) Ineligible activities. Funds may not be used for lending or investment operations,
- 13.21 land speculation, or any activity deemed illegal by federal, state, or local law or ordinance.
- 13.22 (3) Ineligible costs. Ineligible costs include but are not limited to: economic injury
- 13.23 losses, relocation, management fees, financing costs, franchise fees, debt consolidation,
- 13.24 moving costs, refinancing debt existing prior to the date of the disaster, and operating costs.
- 13.25 (e) Loan application:
- 13.26 (1) Application process. All parties seeking recovery loan funds must file an
- 13.27 application with the local unit of government. Small Business Administration (SBA)
- 13.28 application forms may be used. Applications must be transmitted in the form and manner
- 13.29 prescribed by the commissioner.
- 13.30 (f) Application information. Only completed applications will be reviewed for
- 13.31 consideration. Submittal of the following information constitutes a complete application:
- 13.32 (1) MIF recovery loan fund application;
- 13.33 (2) business SBA disaster application if applicable;
- 13.34 (3) regional development organization or responsible local government application,
- 13.35 if applicable;
- 13.36 (4) administrative contact;

- 14.1 (5) business release for local government to review SBA damage assessment/loss
- 14.2 verification, if applicable;
- 14.3 (6) proof of loss statement from insurer;
- 14.4 (7) construction cost estimates;
- 14.5 (8) invoices for work completed;
- 14.6 (9) quotes for equipment;
- 14.7 (10) proposed security;
- 14.8 (11) company historical financial statements for the 24 months immediately prior to
the application date;
- 14.10 (12) credit check release;
- 14.11 (13) number of jobs to be retained;
- 14.12 (14) wages paid;
- 14.13 (15) amount of loan request;
- 14.14 (16) documentation of damages incurred;
- 14.15 (17) property taxes paid and current;
- 14.16 (18) judgments, liens, agreements, consent decrees, stipulations for settlements, or
other such actions which would prevent the applicant from participating in any program
administered by the responsible local, state, or regional government;
- 14.19 (19) compliance with all applicable local ordinances and plans;
- 14.20 (20) documentation through financial and tax records that the business was a viable
operating entity at the time of the flood;
- 14.22 (21) business tax identification number; and
- 14.23 (22) other documentation as requested.
- 14.24 (g) Incomplete applications will be assigned pending status and the applicant will be
informed in writing of the missing documentation.
- 14.26 (h) Determination of eligibility. Applicant eligibility will be determined using
criteria enumerated in paragraph (a). A credit check for the company and each of its
principal owners may be conducted. An owner's encumbrance report will be completed
by the Recorder's Office.
- 14.30 A grant recipient is eligible for assistance provided under this section only after the
recipient has claimed all applicable private insurance and the recipient has utilized all other
sources of applicable assistance available under the act appropriating funding for the grant.
- 14.33 Sec. 22. Laws 2009, chapter 172, article 4, section 2, subdivision 5, is amended to read:
- 14.34 **Subd. 5. Department of Administration** 6,500,000 7,900,000

- 15.1 (a) Funds in this subdivision are appropriated
- 15.2 to the commissioner of the Department
- 15.3 of Administration for grants to the named
- 15.4 organizations for the purposes specified
- 15.5 in this subdivision. Up to one percent of
- 15.6 funds may be used by the Department of
- 15.7 Administration for grants administration.
- 15.8 Grants made to public television or radio
- 15.9 organizations are subject to Minnesota
- 15.10 Statutes, sections 129D.18 and 129D.19.
- 15.11 (b) Grant agreements entered into by
- 15.12 the commissioner and recipients of
- 15.13 appropriations in this subdivision must
- 15.14 ensure that money appropriated in this
- 15.15 subdivision is used to supplement and
- 15.16 not substitute for traditional sources of
- 15.17 funding. No more than 2.5 percent of any
- 15.18 grant may be used by the recipient for
- 15.19 administration. A cultural grants advisory
- 15.20 board may be established by the Department
- 15.21 of Administration to provide advice and
- 15.22 assistance in the making of grants under this
- 15.23 subdivision. The board, if appointed, shall
- 15.24 consist of seven members, to be appointed
- 15.25 by the commissioner. One member shall
- 15.26 represent public radio and television, one
- 15.27 shall represent Minnesota zoos, one shall
- 15.28 represent the Minnesota Center for the
- 15.29 Humanities, and the remaining four shall be
- 15.30 appointed by the commissioner to represent a
- 15.31 diverse set of cultural interests. All recipients
- 15.32 of funds under this subdivision shall report
- 15.33 to the legislature by January 15 of each year
- 15.34 on uses of those funds.
- 15.35 (c) **Public Television.** \$2,800,000 the first
- 15.36 year and \$3,500,000 the second year are

- 16.1 appropriated for a grant to the Minnesota
- 16.2 Public Television Association for production
- 16.3 and acquisition grants in accordance with
- 16.4 new Minnesota Statutes, section 129D.18.
- 16.5 **(d) Minnesota Public Radio.** \$1,150,000
- 16.6 the first year and \$1,500,000 the second year
- 16.7 are appropriated for a grant to Minnesota
- 16.8 Public Radio to create new programming
- 16.9 and events, expand regional news service,
- 16.10 amplify Minnesota culture to a regional
- 16.11 and national audience, and document
- 16.12 Minnesota's history through the Minnesota
- 16.13 Audio Archives.
- 16.14 **(e) Association of Minnesota Public**
- 16.15 **Educational Radio Stations.** \$1,150,000
- 16.16 the first year and \$1,500,000 the second
- 16.17 year are appropriated for a grant to the
- 16.18 Association of Minnesota Public Radio
- 16.19 Stations for production and acquisition grants
- 16.20 in accordance with new Minnesota Statutes,
- 16.21 section 129D.19.
- 16.22 **(f) Zoos.** \$450,000 in 2010 and \$450,000 in
- 16.23 2011 are appropriated for the programmatic
- 16.24 development of Minnesota's zoos.
- 16.25 Three-quarters of this fund in any year
- 16.26 shall be reserved in equal portions each for
- 16.27 the Minnesota Zoo, the Como Zoo, and
- 16.28 the Lake Superior Zoo. The remainder
- 16.29 may be apportioned through a competitive
- 16.30 grants process or may be allocated by the
- 16.31 commissioner to zoos that are accredited by
- 16.32 the Association of Zoos and Aquariums or
- 16.33 that demonstrate to the commissioner a plan
- 16.34 for working toward that accreditation during
- 16.35 the biennium ending June 30, 2011. The

- 17.1 appropriation for the Lake Superior Zoo is
17.2 available until June 30, 2015.
- 17.3 (g) **Minnesota State Capitol.** The
17.4 Department of Administration, the Capitol
17.5 Area Architecture and Planning Board,
17.6 and the Minnesota Historical Society shall
17.7 consider and report to the legislature on
17.8 possible uses of funds created under the
17.9 Minnesota Constitution, article XI, section
17.10 15, for the restoration, renovation, and repair
17.11 of the State Capitol.
- 17.12 (h) **Minnesota Children's Museum**
17.13 \$250,000 in 2010 and \$250,000 in 2011 are
17.14 appropriated for the Minnesota Children's
17.15 Museum. These amounts are for arts, arts
17.16 education, and arts access and to preserve
17.17 Minnesota's history and cultural heritage.
- 17.18 The director shall submit an annual report
17.19 on the expenditure and use of money
17.20 appropriated under this paragraph to the
17.21 legislature as provided in Minnesota Statutes,
17.22 section 3.195. The first year report must be
17.23 submitted by March 1, 2010. In subsequent
17.24 years the report shall be submitted by
17.25 January 15. Notwithstanding Minnesota
17.26 Statutes, section 16A.28, the appropriations
17.27 encumbered on or before June 30, 2011,
17.28 as grants or contracts in this paragraph are
17.29 available until June 30, 2013.
- 17.30 (i) **Duluth Children's Museum**
17.31 \$250,000 in 2010 and \$250,000 in 2011
17.32 are appropriated for the Duluth Children's
17.33 Museum. These amounts are for arts, arts
17.34 education, and arts access and to preserve
17.35 Minnesota's history and cultural heritage.

- 18.1 The director shall submit an annual report
- 18.2 on the expenditure and use of money
- 18.3 appropriated under this paragraph to the
- 18.4 legislature as provided in Minnesota Statutes,
- 18.5 section 3.195. The first year report must be
- 18.6 submitted by March 1, 2010. In subsequent
- 18.7 years the report shall be submitted by
- 18.8 January 15. Notwithstanding Minnesota
- 18.9 Statutes, section 16A.28, the appropriations
- 18.10 encumbered on or before June 30, 2011,
- 18.11 as grants or contracts in this paragraph are
- 18.12 available until June 30, 2013.
- 18.13 **(j) Science Museum of Minnesota**
- 18.14 \$450,000 in 2010 and \$450,000 in 2011
- 18.15 are appropriated for the Science Museum
- 18.16 of Minnesota. These amounts are for
- 18.17 arts, arts education, and arts access and to
- 18.18 preserve Minnesota's history and cultural
- 18.19 heritage. The director shall submit an annual
- 18.20 report on the expenditure and use of money
- 18.21 appropriated under this paragraph to the
- 18.22 legislature as provided in Minnesota Statutes,
- 18.23 section 3.195. The first year report must be
- 18.24 submitted by March 1, 2010. In subsequent
- 18.25 years the report shall be submitted by
- 18.26 January 15. Notwithstanding Minnesota
- 18.27 Statutes, section 16A.28, the appropriations
- 18.28 encumbered on or before June 30, 2011,
- 18.29 as grants or contracts in this paragraph are
- 18.30 available until June 30, 2013.
- 18.31 Sec. 23. Laws 2011, First Special Session chapter 6, article 4, section 2, subdivision 6,
- 18.32 is amended to read:
- 18.33 **Subd. 6. Department of Administration** 9,175,000 8,150,000

- 19.1 These amounts are appropriated to the
- 19.2 commissioner of administration for grants
- 19.3 to the named organizations for the purposes
- 19.4 specified in this subdivision. Up to one
- 19.5 percent of funds may be used by the
- 19.6 commissioner for grants administration.
- 19.7 Grant agreements entered into by
- 19.8 the commissioner and recipients of
- 19.9 appropriations in this subdivision must
- 19.10 ensure that money appropriated in this
- 19.11 subdivision is used to supplement and not
- 19.12 substitute for traditional sources of funding.
- 19.13 **Public Radio Grants.** \$2,650,000 the first
- 19.14 year and \$2,650,000 the second year are for
- 19.15 a competitive Arts and Cultural Heritage
- 19.16 Grants Program-Public Radio.
- 19.17 The commissioner shall solicit proposals
- 19.18 and award grants to public radio stations
- 19.19 that satisfy the eligibility requirements
- 19.20 under Minnesota Statutes, section 129D.14,
- 19.21 subdivision 3, and create, produce, acquire,
- 19.22 or distribute radio programs that educate,
- 19.23 enhance, or promote local, regional, or
- 19.24 statewide items of artistic, cultural, or
- 19.25 historic significance. The commissioner
- 19.26 shall give preference to projects that
- 19.27 expand Minnesotans' access to knowledge,
- 19.28 information, arts, state history, or cultural
- 19.29 heritage. This appropriation is available for
- 19.30 eligible costs incurred as of July 1, 2011, and
- 19.31 does not expire until June 30, 2015.
- 19.32 **Public Television.** \$3,700,000 the first
- 19.33 year and \$3,700,000 the second year are for
- 19.34 grants to the Minnesota Public Television
- 19.35 Association for production and acquisition

- 20.1 grants according to Minnesota Statutes,
- 20.2 section 129D.18. In recognition of the
- 20.3 sesquicentennial of the American Civil
- 20.4 War, the Minnesota Public Television
- 20.5 Association shall produce new programming
- 20.6 on Minnesota history during that period.
- 20.7 This appropriation is available for eligible
- 20.8 costs incurred as of July 1, 2011, and does
- 20.9 not expire until June 30, 2015.
- 20.10 **Veterans Camps.** \$475,000 the first year
- 20.11 is for grants of \$400,000 to the Disabled
- 20.12 Veterans Rest Camp located on Big Marine
- 20.13 Lake in Washington County and \$75,000 to
- 20.14 the Veterans on the Lake Resort located on
- 20.15 Fall Lake in St. Louis County.
- 20.16 **Zoos.** \$300,000 the first year and \$300,000
- 20.17 the second year are for grants of \$200,000
- 20.18 each year to the Como Park Zoo and
- 20.19 \$100,000 each year to the Lake Superior
- 20.20 Zoo for programmatic development. The
- 20.21 appropriation for the Lake Superior Zoo is
- 20.22 available until June 30, 2015.
- 20.23 **Minnesota Children's Museum.** \$500,000
- 20.24 the first year and \$500,000 the second year
- 20.25 are for grants to the Minnesota Children's
- 20.26 Museum. These amounts are for arts, arts
- 20.27 education, and arts access and to preserve
- 20.28 Minnesota's history and cultural heritage.
- 20.29 **Science Museum of Minnesota.** \$500,000
- 20.30 the first year and \$500,000 the second year
- 20.31 are for grants to the Science Museum of
- 20.32 Minnesota. These amounts are for arts, arts
- 20.33 education, and arts access and to preserve
- 20.34 Minnesota's history and cultural heritage.

- 21.1 **Minnesota Film and TV Board. \$500,000**
- 21.2 the first year and \$500,000 the second year
- 21.3 are for grants to the Minnesota Film and
- 21.4 TV Board for grants to Minnesota residents
- 21.5 to create film or television productions that
- 21.6 promote Minnesota's cultural heritage and
- 21.7 for the film production jobs program under
- 21.8 Minnesota Statutes, section 116U.26. This
- 21.9 appropriation is available until June 30, 2015.
- 21.10 **State Capitol Preservation Commission.**
- 21.11 \$550,000 the first year is for the purposes of
- 21.12 Minnesota Statutes, section 16B.2405. This
- 21.13 appropriation is available until spent.
- 21.14 **Sec. 24. 2012 FLOOD LOSS; CITY REPLACEMENT AID.**
- 21.15 Subdivision 1. Flood net tax capacity loss. The county assessor of each qualified
- 21.16 county shall compute a "flood net tax capacity loss" for each city equal to the net tax
- 21.17 capacity reduction resulting from the reassessments under section 27. A county assessor
- 21.18 of a qualified county that contains a city that has a flood net tax capacity loss that exceeds
- 21.19 five percent of its assessment year 2012 total taxable net tax capacity shall certify the city's
- 21.20 flood net tax capacity loss to the commissioner of revenue by August 1, 2013.
- 21.21 As used in this section, a "qualified county" is a county located within the area
- 21.22 included in a disaster or emergency area that is designated and approved by the executive
- 21.23 council under Minnesota Statutes, section 273.1231, as a result of the floods.
- 21.24 Subd. 2. Flood loss aid. In 2014, each city with a flood net tax capacity loss equal
- 21.25 to or greater than five percent of its assessment year 2012 total taxable net tax capacity is
- 21.26 entitled to flood loss aid equal to the flood net tax capacity loss times the city's average
- 21.27 local tax rate for taxes payable in 2012.
- 21.28 Subd. 3. Duties of commissioner. The commissioner of revenue shall determine
- 21.29 each city's aid amount under this section. The commissioner shall notify each eligible city
- 21.30 of its flood loss aid amount by August 15, 2013. The commissioner shall make payments
- 21.31 to each city after July 1, 2014, and before July 20, 2014.
- 21.32 Subd. 4. Optional city expenditure. A city that receives aid under this section
- 21.33 may choose to expend a portion of the aid received for repair of county roads located
- 21.34 within the city.

- 22.1 Subd. 5. Appropriation. The amount necessary to pay the aid amounts under this
- 22.2 section in fiscal year 2015, for calendar year 2014, is appropriated to the commissioner of
- 22.3 revenue from the general fund.
- 22.4 **Sec. 25. DISASTER AREA; WAIVING PROPERTY TAX PENALTIES FOR**
- 22.5 **BUSINESS AND DAMAGED PROPERTIES.**
- 22.6 (a) Notwithstanding Minnesota Statutes, section 279.01, subdivision 1, but subject to
- 22.7 the provisions of this section, a penalty does not accrue on the second half of the payable
- 22.8 2012 property taxes on either: (1) class 3a or 3b property, as classified under Minnesota
- 22.9 Statutes, section 273.13, subdivision 24, that is located in a county that includes an area
- 22.10 that would qualify to be designated as a "disaster or emergency area" under Minnesota
- 22.11 Statutes, section 273.1231, if the designation were to be based solely on the damages to
- 22.12 properties resulting from the floods and irrespective of executive council approval; or (2)
- 22.13 any property that suffered damage of 50 percent or more as a result of the floods.
- 22.14 (b) To qualify for this extended due date for the second half payment: (1) the
- 22.15 taxpayer must have been unable to make the payment due to circumstances related to the
- 22.16 floods; and (2) the taxpayer must have paid the first half of the payable 2012 taxes by May
- 22.17 15, 2012, and must pay the second half of the payable 2012 taxes by December 28, 2012.
- 22.18 (c) If the second half of the payable 2012 property taxes is paid after December 28,
- 22.19 2012, then all penalties that would have occurred since the due date under Minnesota
- 22.20 Statutes, section 279.01, subdivision 1, must be charged on the amount of the unpaid tax.
- 22.21 (d) In the case of property described in paragraph (a), clause (1), the property
- 22.22 taxpayer must attach to the payment a statement that all the requirements for an extension
- 22.23 under this section are met.
- 22.24 **Sec. 26. AGRICULTURAL HOMESTEADS EXTENDED.**
- 22.25 Agricultural land and buildings that were homestead property under Minnesota
- 22.26 Statutes, section 273.13, subdivision 23, paragraph (a), for the 2012 assessment shall
- 22.27 remain classified agricultural homesteads for assessment years 2013 and 2014 if:
- 22.28 (1) the property owner abandoned the homestead dwelling located on the agricultural
- 22.29 homestead as a result of damage caused by the floods;
- 22.30 (2) the property is located in an area designated, and approved by the executive
- 22.31 council, as a "disaster or emergency area" under Minnesota Statutes, section 273.1231,
- 22.32 based on damages to properties caused by the floods;
- 22.33 (3) the agricultural land and buildings remain under the same ownership for the
- 22.34 current assessment year as existed for the 2012 assessment year;

23.1 (4) the dwelling occupied by the owner is located in this state and is within 50 miles
23.2 of one of the parcels of agricultural land that is owned by the taxpayer; and
23.3 (5) the owner notifies the county assessor that the relocation was due to the floods,
23.4 and the owner furnishes the assessor any information deemed necessary by the assessor
23.5 in verifying the change in homestead dwelling. For taxes payable in 2014, the owner
23.6 must notify the assessor by December 1, 2013. Further notifications to the assessor are
23.7 not required if the property continues to meet all the requirements in this paragraph and
23.8 any dwellings on the agricultural land remain uninhabited.

23.9 **Sec. 27. ABATEMENT AND CREDIT APPLICATIONS WAIVED.**

23.10 (a) Notwithstanding Minnesota Statutes, section 273.1232, subdivision 1, by
23.11 October 1, 2012, each assessor shall cause to be reassessed the properties in the assessor's
23.12 jurisdiction located in an area that would qualify to be designated a "disaster or emergency
23.13 area" under Minnesota Statutes, section 273.1231, if the designation were to be based
23.14 solely on the damages to properties caused by the floods and irrespective of executive
23.15 council approval.

23.16 (b) Notwithstanding contrary provisions contained in Minnesota Statutes, sections
23.17 273.1233 to 273.1235, the requirements in those sections for an application by the
23.18 property owner or property taxpayer are waived for properties located in an area that is
23.19 designated, and approved by the executive council, a "disaster or emergency area" under
23.20 Minnesota Statutes, section 273.1231, as a result of the damages to properties caused by
23.21 the floods. Before December 14, 2012, each county assessor shall notify the taxpayers or
23.22 owners of the affected parcels.

23.23 **Sec. 28. TRANSFERS, REDUCTIONS, CANCELLATIONS, AND BOND SALE**
23.24 **AUTHORIZATIONS REDUCED.**

23.25 (a) The remaining balance of the appropriation in Laws 2010, Second Special
23.26 Session chapter 1, article 1, section 7, for the economic development and housing
23.27 challenge program, estimated to be \$450,000, is transferred to the general fund.
23.28 (b) The appropriation in Laws 2010, Second Special Session chapter 1, article 1,
23.29 section 5, for Minnesota investment fund grants pursuant to Minnesota Statutes, section
23.30 12A.07, is reduced by \$1,358,000.
23.31 (c) The appropriation in Laws 2010, Second Special Session chapter 1, article 1,
23.32 section 12, subdivision 2, for disaster enrollment impact aid pursuant to Minnesota
23.33 Statutes, section 12A.06, is reduced by \$30,000.

- 24.1 (d) The appropriation in Laws 2010, Second Special Session chapter 1, article 1, section 12, subdivision 3, for disaster relief facilities grants pursuant to Minnesota Statutes, section 12A.06, is reduced by \$392,000.
- 24.2 (e) The appropriation in Laws 2010, Second Special Session chapter 1, article 1, section 12, subdivision 4, for disaster relief operating grants pursuant to Minnesota Statutes, section 12A.06, is reduced by \$2,000.
- 24.3 (f) The appropriation in Laws 2010, Second Special Session chapter 1, article 1, section 12, subdivision 5, for pupil transportation aid pursuant to Minnesota Statutes, section 12A.06, is reduced by \$5,000.
- 24.4 (g) The appropriation in Laws 2010, Second Special Session chapter 1, article 2, section 5, subdivision 3, for pupil transportation aid pursuant to Minnesota Statutes, section 12A.06, is reduced by \$271,000.
- 24.5 (h) The appropriation in Laws 2010, Second Special Session chapter 1, article 1, section 13, for public health activities pursuant to Minnesota Statutes, section 12A.08, is reduced by \$103,000.
- 24.6 (i) \$1,428,000 of the appropriation in Laws 2007, First Special Session chapter 2, article 1, section 4, subdivision 3, for reconstruction and repair of trunk highways and trunk highway bridges is canceled. The bond sale authorization in Laws 2007, First Special Session chapter 2, article 15, subdivision 2, is reduced by \$1,428,000.
- 24.7 (j) \$5,680,000 of the appropriation in Laws 2007, First Special Session chapter 2, article 1, section 4, subdivision 4, as amended by Laws 2008, chapter 289, section 2, for grants to local governments for capital costs related to rehabilitation and replacement of local roads and bridges damaged or destroyed by flooding pursuant to Minnesota Statutes, section 174.50, is canceled. The bond sale authorization in Laws 2007, First Special Session chapter 2, article 1, section 15, subdivision 3, is reduced by \$5,680,000.
- 24.8 (k) \$2,133,000 of the appropriation in Laws 2010, Second Special Session chapter 1, article 1, section 4, subdivision 3, for local road and bridge rehabilitation and replacement pursuant to Minnesota Statutes, section 12A.16, subdivision 3, is canceled. The bond sale authorization in Laws 2010, Second Special Session chapter 1, article 1, section 17, subdivision 2, is reduced by \$2,133,000.
- 24.9 (l) The appropriation in Laws 2010, Second Special Session chapter 1, article 1, section 4, subdivision 2, for state road infrastructure operations and maintenance pursuant to Minnesota Statutes, section 12A.16, subdivision 1, is reduced by \$819,000.

24.34 **Sec. 29. BUDGET RESERVE ACCOUNT; NOVEMBER 2012 FORECAST.**

25.1 Notwithstanding any requirements of Minnesota Statutes, section 16A.152,
 25.2 subdivision 2, to the contrary, the budget reserve account requirement, under Minnesota
 25.3 Statutes, section 16A.152, subdivision 2, paragraph (a), clause (2), for the November 2012
 25.4 budget forecast, is \$612,236,000.

25.5 **Sec. 30. BUDGET RESERVE ACCOUNT; REDUCTION.**

25.6 The commissioner of management and budget shall reduce the amount in the budget
 25.7 reserve account established under Minnesota Statutes, section 16A.152, subdivision 1a, by
 25.8 \$45,382,000.

25.9 **Sec. 31. EFFECTIVE DATE.**

25.10 This article is effective the day following final enactment.

25.11 **ARTICLE 2**

25.12 **WINDSTORM DISASTER RELIEF**

25.13 **Section 1. DISASTER RELIEF APPROPRIATION SUMMARY.**

25.14 The amounts shown in this section summarize direct appropriations made in this
 25.15 article.

	<u>SUMMARY</u>
25.16	
25.17	\$ 5,800,000
25.18	2,069,000
25.19	<u>\$ 7,869,000</u>
25.20	6,875,000
25.21	<u>994,000</u>

25.22 **Sec. 2. APPROPRIATIONS.**

25.23 The sums shown in the column under "Appropriations" are appropriated from
 25.24 the general fund or other named fund for relief as specified in this article from the
 25.25 windstorms that occurred on or after July 2, 2012, in Beltrami, Clearwater, Hubbard,
 25.26 Itasca, Koochiching, St. Louis, and Cass Counties, and to the Leech Lake and Bois Forte
 25.27 bands of Ojibwe. Unless otherwise specified, money appropriated in this act for a capital
 25.28 program or project may be used to pay state agency staff costs that are attributed directly
 25.29 to the capital program or project in accordance with accounting policies adopted by the
 25.30 commissioner of management and budget. Unless otherwise specified, the appropriations
 25.31 included in this article are available through June 30, 2015, except that appropriations
 25.32 of bond proceeds for capital improvements are available until the project is completed

26.1 or abandoned, subject to Minnesota Statutes, section 16A.642. The appropriations in
 26.2 this article are onetime.

26.3

APPROPRIATIONS

26.4

Sec. 3. PUBLIC SAFETY \$ 5,800,000

26.5

State and Local Assistance

26.6

From the general fund to the commissioner

26.7

of public safety for reimbursement of

26.8

eligible costs for applicants in the affected

26.9

counties as a result of damages incurred. The

26.10

appropriations in this section do not lapse,

26.11

notwithstanding the provisions of Minnesota

26.12

Statutes, section 16A.28.

26.13

Sec. 4. NATURAL RESOURCES

26.14

Subdivision 1. Total appropriation \$ 2,069,000

26.15

To the commissioner of natural resources

26.16

for the purposes specified in the following

26.17

subdivisions.

26.18

Subd. 2. Reforestation 994,000

26.19

From the bond proceeds fund for reforestation

26.20

of lands damaged by natural causes under

26.21

Minnesota Statutes, section 89.002. Money

26.22

appropriated in this section may be used to

26.23

pay state agency staff costs that are attributed

26.24

directly to the capital program.

26.25

Subd. 3. Lost revenue and salvage timber sales 1,075,000

26.26

For the administration of the salvage timber

26.27

sales and to replace lost revenue. This

26.28

appropriation is from the general fund.

26.29

Sec. 5. BOND SALE AUTHORIZATION.

26.30

To provide the money appropriated in this article from the bond proceeds fund, the
 26.31 commissioner of management and budget, at the request of the commissioner of public

27.1 safety, shall sell and issue bonds of the state in an amount up to \$994,000 in the manner,
27.2 upon the terms, and with the effect prescribed by Minnesota Statutes, sections 16A.631 to
27.3 16A.675, and by the Minnesota Constitution, article XI, sections 4 to 7.

27.4 **Sec. 6. EFFECTIVE DATE.**

27.5 This article is effective the day following final enactment.

APPENDIX
Article locations in 12-6259

ARTICLE 1 FLOOD DISASTER RELIEF Page.Ln 1.13
ARTICLE 2 WINDSTORM DISASTER RELIEF Page.Ln 25.11

Northeast Minnesota Flood & Summer Windstorm Relief

Appropriation Tracking, HF 1
2012 First-Special Session

Line	Authorizing Statute	Bill Reference	Line Items	Approp Type/Fund	Gov FY 2013	Gov FY 2014-15	Agreement FY 2013	Agreement-Gov FY 2013
1			Article 1 -- Flood Disaster Relief					
2			Public Safety					
3			Public Assistance State & Local FEMA Match	GF	22,690	0	22,690	0
4	12A.15	Sec. 3, Subd. 2	Public Assistance State & Local FEMA Match	GO	3,310	0	2,285	(1,025)
5	12A.15	Sec. 3, Subd. 2	Public Assistance State & Local FEMA Match	GF	500	0	500	0
6	12A.15	Sec. 3, Subd. 3	Debris Removal & Burial	GF	500	0	500	0
7	12A.15	Sec. 3, Subd. 4	Long-term Recovery	GF	500	0	500	0
8			Public Safety Subtotal, Article 1		27,000	0	25,975	(1,025)
9								
10			Transportation					
11	12A.16, s1	Sec. 4, subd. 2	Infrastructure Operations & Maintenance	THF/C	3,000	0	3,000	0
12	12A.16, s2	Sec. 4, subd. 3	Program Planning and Delivery	THF/C	11,000	0	11,000	0
13	12A.16, s2	Sec. 4, subd. 4	State Trunk Highways and Bridges	THF/B	38,000	0	35,000	(3,000)
14	12A.16, s3	Sec. 4, Subd. 5	Local Road and Bridge Reconstruction	STF	30,000	0	30,000	0
15			Debt Service -- THF Bonds	THF/C	0	5,196	0	0
16			Transportation Subtotal, Article 1		82,000	5,196	79,000	(3,000)
17								
18			Employment & Economic Development					
19	12A.07, s1	Sec. 5	Minnesota Investment Fund	GF	20,000	0	15,000	(5,000)
20			Empl & Econ Development Subtotal, Article 1		20,000	0	15,000	(5,000)
21								
22			Public Facilities Authority					
23			Debt Service Relief	GF	823	0	0	(823)
24	12A.14, s1	Sec. 6	Facilities Grants	GO	6,000	0	6,000	0
25			Public Facilities Authority Subtotal, Article 1		6,823	0	6,000	(823)
26								
27			Housing Finance					
28	12A.09, s1	Sec. 7, subd. 2	Economic Dev & Housing Challenge Program	GF	12,220	0	12,220	0
29	12A.09, s3	Sec. 7, subd. 3	Capacity Building Grants	GF	250	0	250	0
30	462A.204	Sec. 7, subd. 4	Family Homelessness Prevention & Assist.	GF	250	0	250	0
31			Housing Finance Subtotal, Article 1		12,720	0	12,720	0
32								
33			Historical Society					
34	12A.11	Sec. 8	Historic Structure Grants	GF	250	0	250	0
35			Historical Society Subtotal, Article 1		250	0	250	0
36								
37			Natural Resources					
38	12A.12, s1	Sec. 9, subd. 2	Facility/Natural Resource Damage	GO	10,030	0	6,855	(3,175)
39	12A.12, s2	Sec. 9, subd. 3	Flood Hazard Mitigation Grants	GF	1,000	0	1,000	0
40	12A.12, s2	Sec. 9, subd. 3	Flood Hazard Mitigation Grants	GO	9,000	0	9,000	0
41	12A.12, s4	Sec. 9, subd. 4	Debris Removal; Public Waters (incl. sediment)	GF	2,000	0	2,000	0
42			Natural Resources Subtotal, Article 1		22,030	0	18,855	(3,175)
43								
44			Water & Soil Resources Board (BWSR)					
45	12A.05, s1	Sec. 10, subd. 2	Reinvest in Minnesota (RIM) Conservation Easements	GO	2,000	0	1,500	(500)
46	12A.05, s1	Sec. 10, subd. 3	Erosion, Sediment & Water Quality	GF	15,000	0	11,000	(4,000)
47			BWSR Subtotal, Article 1		17,000	0	12,500	(4,500)
48								
49			Agriculture					
50	12A.04	Sec. 11	Farm Assistance	GF	600	0	600	0
51			Agriculture Subtotal, Article 1		600	0	600	0
52								
53			Education					
54	12A.06, s1	Sec. 12, subd. 2	Enrollment Impact Aid	GF	61	0	61	0
55	12A.06, s2	Sec. 12, subd. 3	Disaster Relief Facilities Grants	GF	700	0	700	0
56			Education Subtotal, Article 1		761	0	761	0
57								
58			Health					
59	12A.08	Sec. 13	Behavioral Health	GF	222	0	222	0
60	12A.08	Sec. 13	Water Systems	GF	302	0	302	0
61	12A.08	Sec. 13	Response	GF	41	0	41	0
62			Health Subtotal, Article 1		565	0	565	0
63								
64			Pollution Control					
65	12A.13	Sec. 14	Building Rehabilitation	Petro	100	0	0	(100)
66			Pollution Control Subtotal, Article 1		100	0	0	(100)
67								
68			Management & Budget					
69	16A.641	Sec. 15	Bond Sale Expenses	GO	31	0	61	30
70	16A.641	Sec. 15	Bond Sale Expenses	STF	30	0	0	(30)
71	16A.641	Sec. 15	Bond Sale Expenses	THF/B	40	0	40	0
72			Debt Service	GF	0	6,267	0	0
73			Management & Budget Subtotal, Article 1		101	6,267	101	0
74								
75			Revenue					
76	273.1233		City Tax Base Replacement Aid	GF	0	80	0	0
77			Revenue Subtotal, Article 1		0	80	0	0
78								
79			Transfers, Reductions & Cancellations Subtotal, Article 1					
80	Sec. 28, para (a)		TXFR: Laws 2010, 2nd SS, Ch.1 (HFA)	GF	(450)	0	(450)	0
81	Sec. 28, para (b)		REDUC: Laws 2010, 2nd SS, Ch.1 (Emp&Econ Dev)	GF	(1,358)	0	(1,358)	0
82	Sec. 28, para (c)		REDUC: Laws 2010, 2nd SS, Ch.1, Enroll Grant (Educ)	GF	(30)	0	(30)	0
83	Sec. 28, para (d)		REDUC: Laws 2010, 2nd SS, Ch.1, Fac Grant (Educ)	GF	(392)	0	(392)	0
84	Sec. 28, para (e)		REDUC: Laws 2010, 2nd SS, Ch.1, Oper Grant (Educ)	GF	(2)	0	(2)	0
85	Sec. 28, para (f)		REDUC: Laws 2010, 2nd SS, Ch.1, Pup Trans Aid (Educ)	GF	(5)	0	(5)	0
86	Sec. 28, para (g)		REDUC: Laws 2010, 2nd SS, Ch.1,A2 Pup Trans Aid (Educ)	GF	(271)	0	(271)	0
87	Sec. 28, para (h)		REDUC: Laws 2010, 2nd SS, Ch.1, (Health)	GF	(103)	0	(103)	0
88	Sec. 28, para (i)		CANC: Laws 2007, 1st SS, Ch. 2, (MnDOT)	THF/B	0	0	(1,428)	(1,428)
89	Sec. 28, para (j)		CANC: Laws 2007, 1st SS, Ch. 2, (MnDOT)	STF	0	0	(5,680)	(5,680)

Northeast Minnesota Flood & Summer Windstorm Relief

Appropriation Tracking, HF 1
2012 First Special Session

Line	Authorizing Statute	Bill Reference	Line Items	Approp Type/Fund	Gov FY 2013	Gov FY 2014-15	Agreement FY 2013	Agreement-Gov FY 2013
90	Sec. 28, para (k)	CANC: Laws 2010, 2nd SS, Ch.1, Ch.1 (MnDOT)		STF	0	0	(2,133)	(2,133)
91	Sec. 28, para (l)	CANC: Laws 2010, 2nd SS, Ch.1, Ch.1 (MnDOT)		THF/C	0	0	(815)	(815)
92		Transfers, Reductions & Cancellations Subtotal, Article 1			(2,611)	0	(12,671)	(10,060)
93								
94		Article 1 Subtotals						
95		General Fund (GF)			77,409	6,347	67,58€	(9,823)
96		Bond Proceeds Fund (GO)			30,371	0	25,701	(4,670)
97		State Transportation Fund (STF)			30,030	0	30,000	(30)
98		Trunk Highway Fund Bonds (THF/B)			38,040	0	35,040	(3,000)
99		Trunk Highway Fund Cash (THF/C)			14,000	5,196	14,000	0
100		Petro Fund (Petro)			100	0	0	(100)
101		Transfers and Reductions			(2,611)	0	(12,671)	(10,060)
102		All Funds			187,339	11,543	159,65€	(27,683)
103								
104								
105		Article 2 -- Windstorm Disaster Relief						
106								
107		Public Safety						
108	12A.15	Sec. 3	State and Local Assistance	GF	5,800	0	5,800	0
109			Public Safety Subtotal, Article 2		5,800	0	5,800	0
110								
111		Natural Resources						
112	Sec. 4, Subd. 2	Reforestation		GO	994	0	994	0
113	Sec. 4, Subd. 3	Lost Revenue & Salvage Timber Sales		GF	1,075	0	1,075	0
114		Natural Resources Subtotal, Article 2			2,069	0	2,069	0
115								
116		Article 2 Subtotals						
117		General Fund (GF)			6,875	0	6,875	0
118		Bond Proceeds Fund (GO)			994	0	994	0
119		State Transportation Fund (STF)			0	0	0	0
120		Trunk Highway Fund Bonds (THF/B)			0	0	0	0
121		Trunk Highway Fund Cash (THF/C)			0	0	0	0
122		Petro Fund (Petro)			0	0	0	0
123		All Funds			7,869	0	7,869	0
124								
125								
126		TOTAL BILL SUMMARIES:						
127								
128		FUND SUMMARY						
129		General Fund (GF)			84,284	6,347	74,461	(9,823)
130		Bond Proceeds Fund (GO)			31,365	0	26,695	(4,670)
131		State Transportation Fund Bonds (STF)			30,030	0	30,000	(30)
132		Trunk Highway Fund Bonds (THF/B)			38,040	0	35,040	(3,000)
133		Trunk Highway Fund Cash (THF/C)			14,000	5,196	14,000	0
134		Petro Fund (Petro)			100	0	0	(100)
135		Transfers and Reductions			(2,611)	0	(12,671)	(10,060)
136		ALL FUNDS & PROGRAMS			195,208	11,543	167,525	(27,683)
137								
138								
139		AGENCY SUMMARY						
140		Public Safety			32,800	0	31,775	(1,025)
141		Transportation			82,000	5,196	79,000	(3,000)
142		Employment & Economic Development			20,000	0	15,000	(5,000)
143		Public Facilities Authority			6,823	0	6,000	(823)
144		Housing Finance			12,720	0	12,720	0
145		Historical Society			250	0	250	0
146		Natural Resources			24,099	0	20,924	(3,175)
147		Water and Soil Resources Board			17,000	0	12,500	(4,500)
148		Agriculture			600	0	600	0
149		Education			761	0	761	0
150		Pollution Control			100	0	0	(100)
151		Health			565	0	565	0
152		Management and Budget			101	6,267	101	0
153		Revenue			0	80	0	0
154		Transfers and Reductions			(2,611)	0	(12,671)	(10,060)
155		TOTAL ALL AGENCIES & PROGRAMS			195,208	11,543	167,525	(27,683)
156								
157								
158		General Fund Summary						
159		Revenues						
160		End-of-Session, General Fund Balance			26,468	0	26,468	0
161		Cancellation from Budget Reserve			55,205	0	45,582	(9,823)
162	Art 1., Sec 30	Subtotal: Total GF Revenues			81,673	0	71,850	(9,823)
163								
164		Expenditures						
165		Adjusted GF Expenditures in Disaster Bill*			81,673	6,347	71,850	(9,823)
166		Subtotal: Total GF Expenditures			81,673	6,347	71,850	(9,823)
167								
168								
169								
170		Net General Fund Change			0	(6,347)	0	0
171								

*Adjusted total GF expenditures include \$2.6M in GF reductions that are included in "Transfers, Reductions & Cancellations" summary section.



STATE OF MINNESOTA

Office of Governor Mark Dayton

130 State Capitol ♦ 75 Rev. Dr. Martin Luther King Jr. Boulevard ♦ Saint Paul, MN 55155

July 19, 2012

The Honorable Barack Obama
President of the United States
The White House
1600 Pennsylvania Avenue, NW
Washington, DC 20500

Through:

Mr. Andrew Velasquez III, Regional Administrator
Federal Emergency Management Agency, Region V
536 South Clark Street, Floor 6
Chicago, Illinois 60605

Dear Mr. President:

Thank you for your prompt action in declaring a major disaster (FEMA-4069-DR) for the State of Minnesota on July 6, under the provisions of Section 401 of the Robert T. Stafford Disaster Relief and Emergency Assistance Act, 42 U.S.C. §§ 5121-5208 (Stafford Act), and implemented by 44 CFR § 206.36. In my request, I specified that I reserved the right to request additional forms of assistance if necessary.

At this time, I request Individual Assistance for the Counties of Aitkin, Carlton, Crow Wing, Lake, Pine, and St. Louis, and the Fond du Lac Band of Lake Superior Chippewa. The specific programs requested are the Individuals and Households Program, Disaster Unemployment Assistance, Disaster Case Management, Disaster Legal Services and Crisis Counseling.

During the incident period of June 14 – 21, 2012, severe storms and flooding caused damage of historic proportions to many areas of the state. In northeastern Minnesota, the 500-year flood event caused by two-day rainfall amounts in excess of 10 inches, resulted in severe flash flooding across the region. A flood warning remains in effect for Aitkin County, where the Mississippi River is still above flood stage.

The damage to public infrastructure alone was overwhelming. The joint FEMA/State Public Assistance preliminary damage assessment (PDA) calculated losses at \$108 million. Damage to roads, bridges, and water and sewer systems, as well as electric utilities and communications infrastructure is severe and extensive across the region. The amount of debris, silt, and other contaminants generated by the flash flooding is unprecedented in that part of Minnesota. The cleanup of streams, rivers, lakes, and other water resources is especially daunting.

Even more widespread and insidious is the damage caused to individual homes and businesses. More than 1,700 private homes were impacted by the storm and over 100 businesses

Voice: (651) 201-3400 or (800) 657-3717

Fax: (651) 797-1850

MN Relay (800) 627-3529

Website: <http://governor.state.mn.us>

An Equal Opportunity Employer

sustained damage. The joint PDA team surveyed nearly 1,100 damaged homes and county officials documented 600 more. The force of the floodwaters damaged hundreds of structures and the subsequent loss of power, water, sewer, and communications services compounded the impacts, adding to the misery of the citizenry. Sanitary sewage backups created significant public health risks. The sustained high heat and humidity following the disaster have exacerbated mold growth in affected structures, especially in below ground living spaces.

The steep terrain, and numerous creeks and rivers played a significant role in the devastating damage that occurred in the Duluth community. The dam on Chester Creek, which runs through the heart of Duluth, failed during the event. The Fond du Lac and West Spirit Mountain neighborhoods of Duluth and Thomson Township in Carlton County were evacuated. Some areas remain uninhabited because of the risk of landslides. Many private homes and business are inundated with massive amounts of debris from public areas.

This disaster struck an area of the state that is economically depressed and its residents generally have meager economic reserves. The area is populated with a disproportionate number of elderly and poor people. As shown in the socio-economic profile table in Enclosure E, the population age 65 and older, is higher than the state average in all requested counties. The median household income is as much as \$17,000 below the state average, and the unemployment rate and poverty level is higher in all but one county.

To that point, 25 percent of the children in Pine County live below the poverty line, compared to 14 percent statewide. According to the U.S. Census Bureau American Community Survey, just over 25 percent of Duluthians were at or below 100 percent of the Federal Poverty Guidelines and nearly half were at or below 200 percent of that standard. Approximately 17,000 households in the affected area participate in the Energy Assistance Program to help pay their heating bills in the winter. Only 7 percent of households carry flood and sewer backup insurance because this type of event is extremely rare in this part of Minnesota, so the vast majority of these personal losses are uninsured. This disaster is heaping major unforeseen expenses on Minnesotans who can least afford them. The economic pain is real and pervasive.

The economy of the region has diminished over several generations as it shifted from manufacturing and commodity-based industries — primarily timber, paper, and iron ore — to service businesses and tourism. This event will have severe consequences for many of the small communities in the region. The extensive damage to road and bridges, the loss of other lifeline sector utilities, and public perception of the impacts of the disaster have had a devastating effect on the tourism trade at the height of the summer season. Immediately following the flood, Duluth area hotels and north shore resorts reported up to 50 percent cancellation rates. A survey by the Minnesota Department of Employment and Economic Development (DEED) indicates that local businesses laid off about 10 percent of their workers as a result of the disaster. In Carlton County, more than 1,500 workers were laid off for as long as two weeks. High water levels and public infrastructure damage forced the evacuation and closure of several recreational areas and state parks. Jay Cooke State Park, a major attraction in the Carlton area, is closed indefinitely. Minnesota Highway 210, the major road artery through the park, was nearly completely destroyed and remains impassable. Local hotels, restaurants, gas stations, bait shops and similar

enterprises are suffering debilitating losses of revenue during the season that makes or breaks their business year.

The area's agricultural sector — particularly dairy operations — was hit hard by the storms and resultant loss of power and transportation networks. As many as 400 Fond du Lac band members harvest wild rice each year, earning \$4 per pound from the tribal government, which in turn sells it to consumers. This year's crop remains under water and cannot be harvested, negatively impacting next year's crop as well.

True to character, the citizens of northeastern Minnesota fought the floodwaters as hard as they could, sandbagging and pumping day and night to prevent or minimize the damage to their property, but in many cases their efforts were simply overwhelmed. The response of their fellow Minnesotans in helping them has been uplifting and heartwarming.

To date, Minnesota Voluntary Organizations Active in Disaster (MNVOAD) and community-based organizations report more than 48,000 volunteer hours have been spent on response activities. In addition to the Red Cross and Salvation Army, other groups like Nechama, Jewish Response to Disaster, made significant contributions to the debris removal effort and Adventist Community Services coordinated the collection, warehousing, and distribution of relief supplies. Local agencies' resources are being depleted, pushing them to reach out regionally and nationally for additional funding and assistance. The Salvation Army has expended nearly \$10,000 on financial assistance for groceries, clothing, and transient housing. More than 5,800 meals and roughly 7,000 beverages have been served, in addition to 186 cases of bottled water provided to those without safe drinking water. More than 2,700 cleanup kits have been distributed by the Red Cross and Salvation Army.

Three state Disaster Recovery Centers (DRC) served a total of 731 families over the weekend of July 6-9. The Minnesota Department of Health collected trauma risk factors data at the DRCs. The results indicate a high traumatic risk for the affected communities, due primarily to financial loss (96 percent) and uninhabitable homes (33 percent).

Minnesota Housing Finance Agency DRC intake questionnaires showed that the majority of responders (85 percent) were homeowners with an average annual household income of just \$49,300. Most (81 percent) experienced basement flooding or sewer backup in a partially finished basement (56 percent), with 76 percent indicating that their water heater or furnace was damaged.

Serious health and safety concerns remain, as debris must be removed, floodwaters containing sewage cleaned up, and roads, bridges, and structures rebuilt and repaired. Without federal assistance, the cleanup will not be fully completed and necessary repairs will not be made. Many households simply do not have the money to shoulder the financial burden on their own. Unsafe and unsanitary conditions will persist, endangering the health and wellbeing of hundreds of vulnerable adults and children.

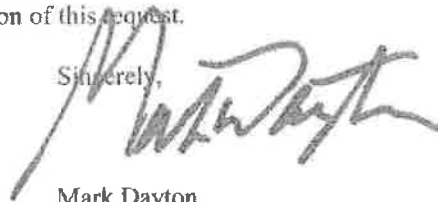
The Honorable Barack Obama
July 19, 2012
Page 4

A great concern is the extensive loss of home furnaces and water heaters. Without financial assistance to repair or replace these big ticket appliances, conditions will become very dangerous — even deadly — when the coming Minnesota winter sets in and temperatures dip below zero. People who can't afford to pay for fuel oil or natural gas certainly will not be able to buy a new furnace. The risks associated with that hazard are totally unacceptable.

I have designated Ms. Kris A. Eide, Director of the Homeland Security and Emergency Management Division, Minnesota Department of Public Safety, as the State Coordinating Officer for this request. She will work with the Federal Emergency Management Agency to coordinate damage assessments and may provide further information or justification on my behalf. You may reach Ms. Eide by telephone at 651-201-7404 or via email at Kris.Eide@state.mn.us.

Thank you for your consideration of this request.

Sincerely,

A handwritten signature in black ink, appearing to read "Mark Dayton", is written over the word "Sincerely,".

Mark Dayton
Governor

cc: Ms. Kris A. Eide, Director, Homeland Security and Emergency Management Division
Minnesota Department of Public Safety

ENCLOSURE A TO MAJOR DISASTER DECLARATION REQUEST

**Estimated Requirements for Individual Assistance
under the Stafford Act**

	Assistance to Individuals and Households					Other Programs (Disaster Unemployment Assistance, Legal Services, and Crisis Counseling)
	Temporary Housing (Indicate No.)	Repairs	Replacement	Permanent Housing Construction	Other Needs Assistance	
TOTALS	265	873	14	unk	982	unk

ENCLOSURE B TO INDIVIDUAL ASSISTANCE REQUEST

Individual Assistance Preliminary Damage Assessment

PDA NUMBERS										
STATE:	Minnesota									
INCIDENT DATE:	7/14/2012									
INCIDENT TYPE:	FLOOD ONLY									
What percent of the affected dwellings will be eligible for IHP?	100%									
County Name	Destroyed	Major	Minor	Affected	Affected Getting Assistance	Total	% Owner	% Insured	% Low Income	HUD FMR for 2 bedroom
Aitkin	0	7	10	12	12	29	100%	3%	0%	\$ 583.00
Carlton	3	55	221	357	357	636	92%	10%	1%	\$ 687.00
Crow Wing	0	2	4	3	3	9	100%	22%	11%	\$ 634.00
Fond Du Lac (Tribe)	0	2	14	24	24	40	95%	5%	100%	\$ 687.00
Lake	0	2	3	2	2	7	100%	0%	0%	\$ 661.00
Pine	8	32	24	13	13	77	88%	3%	0%	\$ 602.00
St. Louis	6	54	143	68	68	271	80%	1%	13%	\$ 687.00
TOTAL/AVERAGE	17	154	419	479	479	1069	89%	7%	8%	\$ 648.71

ENCLOSURE C TO MAJOR DISASTER DECLARATION REQUEST

Estimated Requirements for Other Federal Agency Programs

County	SBA Home Loans	SBA Business Loans	FSA Loans	NRCS	FHWA	USACE	OTHER
Totals	411	107	None identified at this time				

(County)	HOMES				BUSINESS			
	Maj	\$\$	Min	\$\$	Maj	\$\$	Min	\$\$
Carlton	59	1,737,000	109	861,500	12	595,000	23	645,000
Pine	34	1,845,000	34	377,000	3	150,000	19	330,000
St Louis	53	1,934,000	66	865,000	17	1,160,000	27	570,000
Aitkin	6	410,000	6	42,000	1	100,000	1	15,000
Fond Du Lac Reservation	7	162,000	33	227,000			4	37,000
Crow Wing	1	40,000	3	30,000				
Totals	160	6,128,000	251	2,402,500	33	2,005,000	74	1,597,000

ENCLOSURE D TO MAJOR DISASTER DECLARATION REQUEST

Governor's Certification

I certify that for this current disaster, state and local government expenditures and obligations will include the non-federal share of costs required by the Stafford Act. As stated in my letter, and based on information available at this time, tabulation of these estimated expenditures and obligations are as follows:

CATEGORY OF ASSISTANCE	AMOUNT	
	STATE	LOCAL
Individual Assistance:		
"Other Assistance" under the Individuals and Households Program	\$326,346	0
Total:	\$326,346	0

ENCLOSURE E TO MAJOR DISASTER DECLARATION REQUEST

Socio-Economic Profile

	Minnesota	Aitkin County	Carlton County	Crow Wing County	Lake County	Pine County	St Louis County	City of Duluth
Population estimate	5,303,925	16,202	35,386	62,500	10,866	29,750	200,226	86,265
Population change	0.80%	0.10%	0.20%	0.04%	-0.40%	-0.50%	<.01%	-0.80%
Population age 65 and older	13.10%	27.70%	15.00%	18.50%	22.80%	16.70%	16.00%	13.80%
Unemployment Rate*	6.40%	9.60%	7.10%	7.20%	3.60%	9.00%	8.00%	8.20%
Median Household Income	\$57,243	\$40,226	\$52,858	\$44,659	\$46,765	\$43,938	\$44,941	\$41,092
Persons below poverty level	10.60%	13.50%	10.50%	11.5%	11.60%	14.00%	15.10%	20.30%

Source U.S. Census Bureau: State and County QuickFacts. Data derived from Population Estimates, Census of Population and Housing, Small Area Income and Poverty Estimates, State and County Housing Unit Estimates, County Business Patterns, Nonemployer Statistics, Economic Census, Survey of Business Owners, Building Permits, Consolidated Federal Funds Report.

*Source U.S. Census Bureau: 2006-2010 American Community Survey.

Northland Flash Flood 2012

Regional Long Term Recovery
Committee for Individual and
Family Assistance

Public Infrastructure

- Local Units of Government and State of Minnesota
- FEMA and State Assistance

Business Recovery

- Aligned Regional Economic Recovery Team
- Northspan, Minnesota Power, DEED, DEDA, Chamber, APEX, Northland Foundation, DSACF

Individuals, Family

- Regional Long Term Recovery Committee
- Twin Ports Flood Fund; Volunteer Services of Carlton County
- Joint fundraising, local Unmet Needs Committees, Emotional and Spiritual Needs
- Regional and Local Volunteer coordination

Immediate Assistance

- Mass Feeding
- Mass Sheltering
- Emergency Assistance
- Emergency Clean up / Muck out

Personal Resources

- Insurance
- Savings
- Support from Family and Friends
- Other

Small Business Administration

- Real property loans up to \$200,000
- Personal property loans up to \$40,000

Other Government Assistance

- Federal Assistance
- State Assistance
- Local assistance

Long-Term Recovery Group

- Assistance for long-term disaster-related unmet needs

Disaster Case Managers

- Someone who works with a client on a case by case basis and helps that client make a recovery plan suited to their particular situation and available resources. The case manager networks with other agencies and community resources (including the LTRC) to access resources in a timely manner for their client and is a third party advocate for their clients.
- Funding for Case Managers comes from other sources of money.
- ***Every dollar donated to Flood Survivors goes to Flood Survivors.***

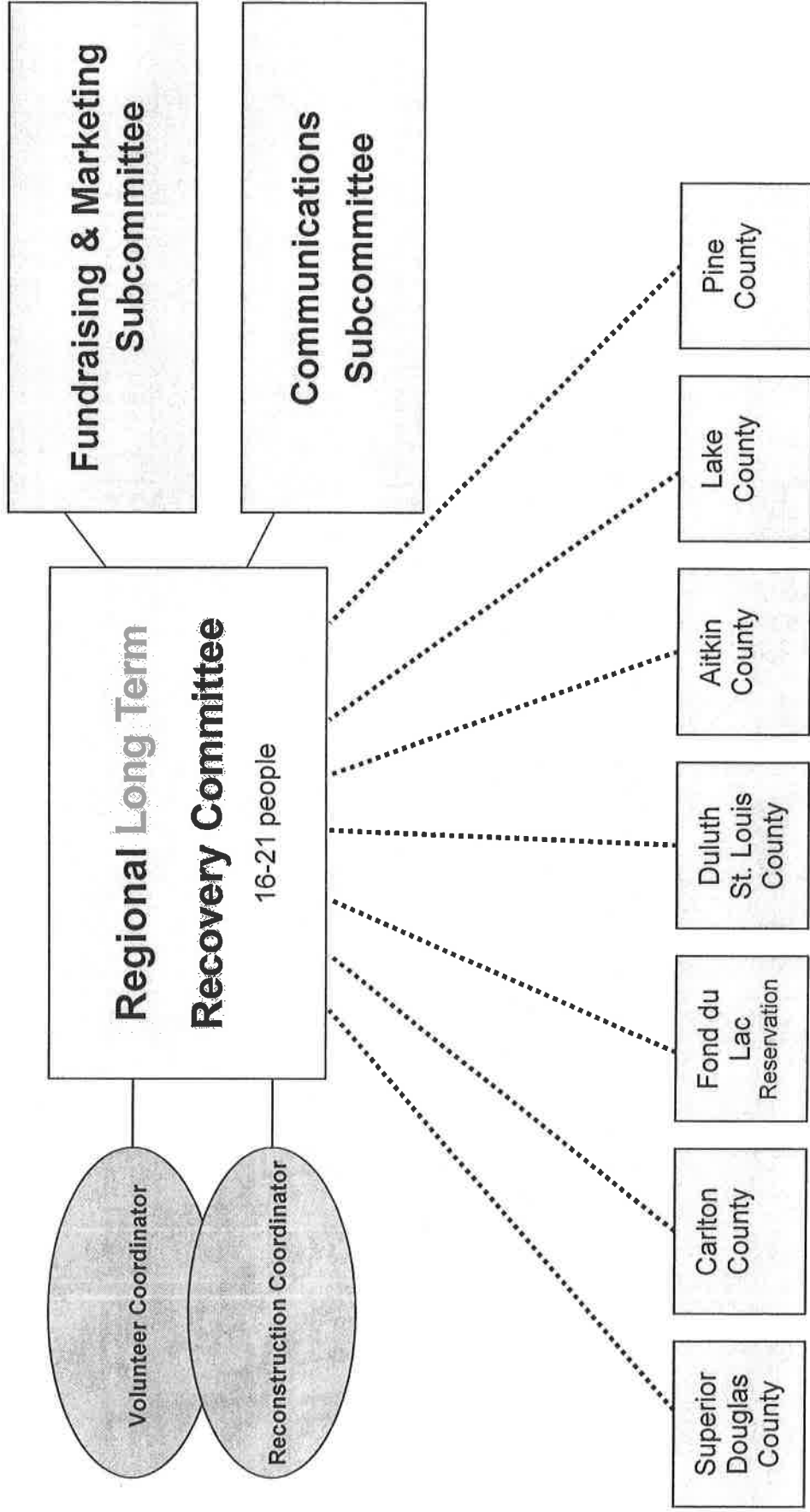
A Long-term recovery committee:

- Supports the recovery process through multiple contributors but works as a single entity to bring resources to bear on the disaster-related needs.
- Organizes with a formal, identified leadership and develops operating by-laws
- Sometimes Identifies as a nonprofit organization through its own 501(c) (3), but our Region is most likely to operate under the umbrella of a supporting organization's or agency's 501(c) (3).
- Identifies its mission toward a client base, with each of the members providing appropriate resources.
- Directs its work toward assistance to those affected by the disaster, having formed especially for that purpose in the wake of a disaster.

Regional LTRC

- We expect to announce a new fundraising goal of several million dollars in the next few days
- Our goal is to pool regional resources, money from several funds working through a unified Case Manager system, to get money to flood survivors as fast and efficiently as possible.
- National and regional donations of volunteers and materials as significant as cash.
- Training is already underway.

Proposed Structure



• Long Term Recovery Case Workers Supporting Here

LTRC Status

- Training by state; Wadena Example
- Carlton County LTRC meeting weekly
- Duluth/St. Louis County: preliminary information meetings; first meeting Thursday
- Preliminary steps underway in the rest of the region
- First Regional Meeting Friday

Long-term Recovery committees – what do they do?

- Identify unmet needs
- Create a “clearinghouse” for resources
- Create resources
- Respond in unique ways– locally appropriate
- Identify vulnerable population groups
- Provide information and leadership to community concerning recovery
- Provide information and resources for agencies assisting in recovery
- Provide resources for case management - reconstruction
- Insure criteria for distribution of resources
- Provide accountability for distribution of resources
- Provide continuing exposure of disaster to the “greater community” (a voice crying in the wilderness)

Who should serve on a regional or local Disaster Long-term Recovery Committee?

- Community leaders
- Business owners
- Pastors and lay people
- Foundation members
- Community service organizations
- Concerned citizens
- Non-profit partners
- Elected officials
- Regional/ local EMs
- Insurance representatives
- Education leadership
- Bankers/Financial Professionals
- Construction Experts

Contact Information

Drew Digby
Long Term Recovery Committee
(218) 310-1188
drewdigby@me.com

Paula Reed, President
United Way of Greater Duluth
(218) 726-4790
preed@unitedwayduluth.org

