

Aitkin County Board of Commissioners  
Request for County Board Action/Agenda Item Cover Sheet



To: Chairperson, Aitkin County Board of Commissioners

Date: 2/27/12

Via: Patrick Wussow, County Administrator

From: LAND DEPT

Title of Item:

Public Hearing on Classification of Tax Forfeited Lands

Requested Meeting Date: 3/6 Estimated Presentation Time: 30 min

Presenter: MARK JAWORS

**Type of Action Requested** (check all that apply)

- For info only, no action requested
- For discussion only with possible future action
- Let/Award Bid or Quote (attach copy of basic bid/quote specs or summary of complex specs, each bid/quote received & bid/quote comparison)
- Approve/adopt proposal by motion
- Authorize filling vacant staff position
- Request to schedule public hearing or sale
- Request by member of the public to be heard
- Item should be addressed in closed session under MN Statute \_\_\_\_\_
- Approve under Consent Agenda
- Adopt Ordinance Revision
- Approve/adopt proposal by resolution (attach draft resolution)
- Other (please list) \_\_\_\_\_

**Fiscal Impact** (check all that apply)

- Is this item in the current approved budget?  Yes  No (attach explanation)
- What type of expenditure is this?  Operating  Capital  Other (attach explanation)
- Revenue line account # that funds this item is: \_\_\_\_\_
- Expenditure line account # for this item is: \_\_\_\_\_

**Staffing Impact** (Any yes answer requires a review by Human Resources Manager before going to the board)

- Duties of a department employee(s) may be materially affected.  Yes  No
- Applicable job description(s) may require revision.  Yes  No
- Item may impact a bargaining unit agreement or county work policy.  Yes  No
- Item may change the department's authorized staffing level.  Yes  No



**Supporting Attachment(s)**

- Memorandum Summary of Item
- Copy of applicable county policy and/or ordinance (excerpts acceptable)
- Copy of applicable state/federal statute/regulation (excerpts acceptable)
- Copy of applicable contract and/or agreement
- Original bid spec or quote request (excluding complex construction projects)
- Bids/quotes received (excluding complex construction projects, provide comparison worksheet)
- Bid/quote comparison worksheet
- Draft County Board resolution
- Plat approval check-list and supporting documents
- Copy of previous minutes related to this issue
- Other supporting document(s) (please list) \_\_\_\_\_

**Provide eleven (11) copies of supporting documentation NO LATER THAN Wednesday at 12:00 pm to make the Board's agenda for the following Tuesday. Items WILL NOT be placed on the Board agenda unless complete documentation is provided for mailing in the Board packets. (see reverse side for details)**

CLASSIFICATION OF LANDS  
FORFEITED TO THE STATE FOR TAXES

WHEREAS, under Statute 282, the Aitkin County Board of Commissioners, is acting on behalf of the state under laws allowing the county board to classify and manage tax-forfeited lands held by the state in trust for the local units, and

WHEREAS, parcels of land becoming the property of the state in trust under law declaring the forfeiture of lands to the state for taxes must be classified by the county board of the county in which the parcels lie as conservation or nonconservation. In making the classification the board has considered the present use of adjacent lands, the productivity of the soil, the character of forest or other growth, accessibility of lands to established roads, schools, and other public services, their peculiar suitability or desirability for particular uses, and the suitability of the forest resources on the land for multiple use and sustained yield management. The classification, furthermore, must: (1) encourage and foster a mode of land utilization that will facilitate the economical and adequate provision of transportation, roads, water supply, drainage, sanitation, education, and recreation; (2) facilitate reduction of governmental expenditures; (3) conserve and develop the natural resources; and (4) foster and develop agriculture and other industries in the districts and places best suited to them, and

WHEREAS, a public meeting was held on March 6<sup>th</sup>, 2012 at the regular county board meeting and that prior to meeting for the purpose of classifying or reclassifying tax-forfeited lands, the county board gave notice of its intent to meet for that purpose in postings, on the web site, and in the local newspaper, in addition to sending letters to any township or city in which the properties were located, and

WHEREAS, At the meeting, no objections were raised on any of the attached parcels,  
THEREFORE, BE IT RESOLVED, that the following parcels be classified as follows:

#	Parcel ID	Legal Desc	Twp	Rge	Sec	Classify Code	Classification
1	02-1-066102	Bridge Park - Pt Lot 15 W of Hwy 65 and N of Hwy 200	52	23	9	1D	Non- Conservation
2	02-1-075100	Hay U Lot 5	52	23	26	1D	Non- Conservation
3	10-0-047100	NW-SE	49	22	28	8R	Conservation
4	11-0-033700	NW-NW	45	27	13	7X	Non- Conservation
5	15-0-012500, 15-0-012000, 15-0-011400	SW-NE, W 1/2-SE, NE-SW	47	25	7	2D	Non- Conservation
6	16-0-008400	1/4 ac Lot in Bk 118 DDS Page 503	44	25	5	1D	Non- Conservation
7	16-0-050800	3 ac in NW-NW in Bk 99 D Page 435	44	25	35	1D	Non- Conservation
8	20-0-006901	N 1/2-NW (Lots 3 and 4)	51	26	5	1D	Non- Conservation

	20-0-007700 &						
9	20-0-007900	S 1/2-SE, NE-SE	51	26	5	6R	Conservation
		County Auditor's Plat of Swatara Lot					Non-
10	20-1-062800	12 Blk 3	51	26	20	1D	Conservation
	21-0-042700 &						
11	21-0-042800	SE-SW	45	25	26	6R	Conservation
							Non-
12	25-0-026400	E 1/2-NW-NE	44	23	17	1D	Conservation
		1.54 Ac of that part of NW-SE lying W of Hwy 65 in B 108 D p 77, Docs 182190 and 364233					Non-
13	29-0-043200	364233	49	23	19	1D	Conservation
		Sheshebe Point Lot 598					Non-
14	29-1-202700	598	49	23	21	1D	Conservation
		Sheshebe Point Third Addn Lot 3 Blk 33					Non-
15	29-1-271200	Blk 33	49	23	27	1D	Conservation
		Sheshebe Point Third Addn Lot 20 Blk 45					Non-
16	29-1-293100	Blk 45	49	23	27	1D	Conservation
		Sheshebe Point Third Addn Lot 14 Blk 52					Non-
17	29-1-305900	Blk 52	49	23	27	1D	Conservation
		Sheshebe Point Third Addn Lot 8 Blk 53					Non-
18	29-1-307100	Blk 53	49	23	27	1D	Conservation
		Big Sandy Lk Highlands Lot 62					Non-
19	29-1-355900	Highlands Lot 62	49	23	3	1D	Conservation
		NE-NW					Non-
20	30-0-052800	NE-NW	47	23	32	6D	Conservation
		Und 1/6 int in Lot 1					Non-
21	31-0-004400	1	47	26	3	7X	Conservation
		Und 1/6 int in Lot 2					Non-
22	31-0-004900	2	47	26	3	7X	Conservation
		Und 1/32 int in Lot 1					Non-
23	31-0-006400	1	47	26	3	7X	Conservation
		Und 1/32 int in Lot 2					Non-
24	31-0-006900	2	47	26	3	7X	Conservation

Big Sandy Lake Highlands 5th Addn Lots 82 and							Non- Conservation
25	32-1-066600	83	50	23	34	1D	Non- Conservation
26	36-0-009900	NE-NE	45	26	7	7X	Non- Conservation
27	36-0-028300	SE-NW	45	26	18	6X	Non- Conservation
28	41-0-073800	SE-SE	44	22	28	6X	Non- Conservation
Bucks Addn to Hill City Lot 12 Blk 14							Non- Conservation
29	57-1-019900		52	26	14	1D	Non- Conservation

Land Classification Parcels 2012

#	Parcel ID	Legal Desc	Twp	Rge	Sec	Status	DNR Recom	ACLD Recom..	Assigned Class.	First Motion	Second Motion	Tax_for. Or Con/Con	Recommended Classification
1	02-1-066102	Bridge Park - Pt Lot 15 W of Hwy 65 and N of Hwy 200	52	23	9	new	-	1D	1D	BNapst	BNeary	TaxFor	Non-Conservation
2	02-1-075100	Hay U Lot 5	52	23	26	new	-	1D	1D	HHarms	MMcDow	TaxFor	Non-Conservation
3	10-0-047100	NW-SE	49	22	28	request	-	8R	8R	GTveit	HHarms	TaxFor	Conservation
4	11-0-033700	NW-NW	45	27	13	EX DNR	EX DNR	7X	7X	BLake	HHarms	TaxFor	Non-Conservation
5	15-0-012500, 15-0-012000, 15-0-011400	SW-NE, W 1/2-SE, NE-SW	47	25	7	request	-	2D?	2D	HHarms	GTveit	TaxFor	Non-Conservation
6	16-0-008400	1/4 ac Lot in Bk 118 DDS Page 503	44	25	5	new	-	1D	1D	BNapst	HHarms	TaxFor	Non-Conservation
7	16-0-050800	3 ac in NW-NW in Bk 99 D Page 435	44	25	35	new	-	1D	1D	HHarms	MMcDow	TaxFor	Non-Conservation
8	20-0-006901	N 1/2-NW (Lots 3 and 4)	51	26	5	new	EX DNR	1D	1D	HHarms	BNeary	TaxFor	Non-Conservation
9	20-0-007700 & 20-0-007900	S 1/2-SE, NE-SE	51	26	5	request	RETAIN	6R	6R	BNapst	MMcDow	TaxFor	Conservation
10	20-1-062800	County Auditor's Plat of Swatara Lot 12 Blk 3	51	26	20	new	-	1D	1D	HHarms	Blake	TaxFor	Non-Conservation
11	21-0-042700 & 21-0-042800	SE-SW	45	25	26	request	RETAIN	6R	6R	HHarms	GTveit	TaxFor	Conservation
12	25-0-026400	E 1/2-NW-NE	44	23	17	new	-	1D	1D	GTveit	BNapst	TaxFor	Non-Conservation
13	29-0-043200	1.54 Ac of that part of NW-SE lying W of Hwy 65 in B 108 D p 77, Docs 182190 and 364233	49	23	19	new	-	1D	1D	BNapst	HHarms	TaxFor	Non-Conservation
14	29-1-202700	Sheshebe Point Lot 598	49	23	21	new	-	1D	1D	HHarms	BNeary	TaxFor	Non-Conservation
15	29-1-271200	Sheshebe Point Third Addn Lot 3 Blk 33	49	23	27	new	-	1D	1D	BNapst	HHarms	TaxFor	Non-Conservation
16	29-1-293100	Sheshebe Point Third Addn Lot 20 Blk 45	49	23	27	new	-	1D	1D	HHarms	BNeary	TaxFor	Non-Conservation
17	29-1-305900	Sheshebe Point Third Addn Lot 14 Blk 52	49	23	27	new	-	1D	1D	HHarms	BNeary	TaxFor	Non-Conservation
18	29-1-307100	Sheshebe Point Third Addn Lot 8 Blk 53	49	23	27	new	-	1D	1D	HHarms	BNeary	TaxFor	Non-Conservation
19	29-1-355900	Big Sandy Lk Highlands Lot 62	49	23	3	request	-	1D?	1D	HHarms	GTveit	Con/Con	Non-Conservation
20	30-0-052800	NE-NW	47	23	32	new	-	1D	6D	BLake	MMcDow	TaxFor	Non-Conservation
21	31-0-004400	Und 1/6 int in Lot 1	47	26	3	new	RETAIN	7X	7X	HHarms	BNeary	TaxFor	Non-Conservation
22	31-0-004900	Und 1/6 int in Lot 2	47	26	3	new	RETAIN	7X	7X	HHarms	BNeary	TaxFor	Non-Conservation
23	31-0-006400	Und 1/32 int in Lot 1	47	26	3	new	RETAIN	7X	7X	HHarms	BNeary	TaxFor	Non-Conservation
24	31-0-006900	Und 1/32 int in Lot 2	47	26	3	new	RETAIN	7X	7X	HHarms	BNeary	TaxFor	Non-Conservation
25	32-1-066600	Big Sandy Lake Highlands 5th Addn Lots 82 and 83	50	23	34	request	-	9R	1D	HHarms	BNeary	Con/Con	Non-Conservation
26	36-0-009900	NE-NE	45	26	7	new	EX DNR	7X	7X	HHarms	BNeary	TaxFor	Non-Conservation
27	36-0-028300	SE-NW	45	26	18	EX DNR	EX DNR	6X	6X	HHarms	GTveit	TaxFor	Non-Conservation
28	41-0-073800	SE-SE	44	22	28	EX DNR	EX DNR	6X	6X	HHarms	MMcDow	TaxFor	Non-Conservation
29	57-1-019900	Bucks Addn to Hill City Lot 12 Blk 14	52	26	14	new	-	1D	1D	HHarms	BNapst	TaxFor	Non-Conservation

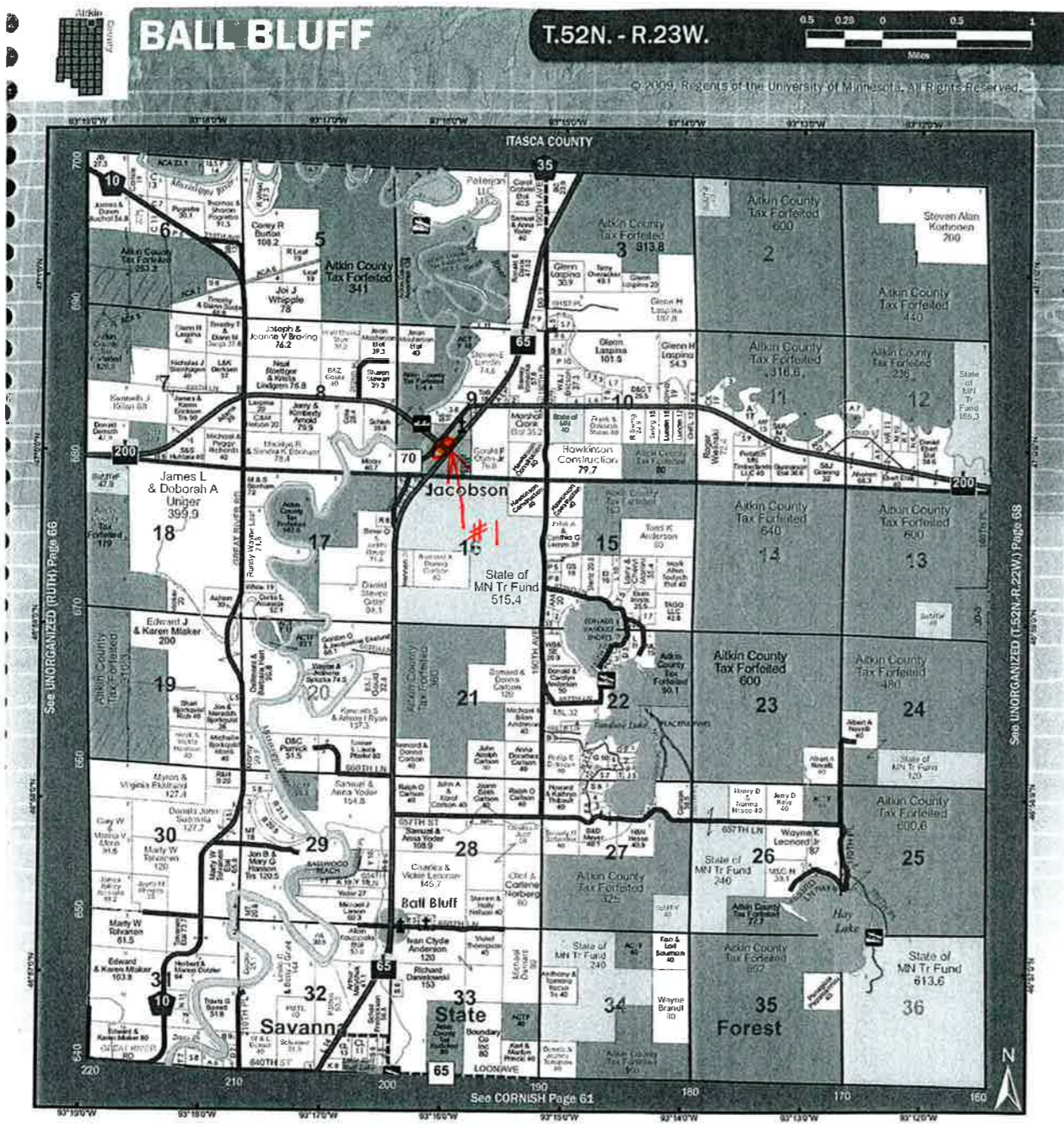
All votes were unanimous by the Forest Advisory Committee; Land Classification Recommendations made on December 14, 2011

**Land Classification Codes**

- 0. None of Listed Below
  - 1. Residential
  - 2. Agricultural
  - 3. Agricultural (no yearlong occupancy)
  - 4. Commercial
  - 5. Recreational or Aesthetic
  - 6. Multiple-use Forestry (including watershed)
  - 7. Game or Fish (including flowage)
  - 8. Commercial Peat or Gravel
  - 9. Road Right-Of-Way, Access to Lake or Other Land
- 

- R Retain Permanently
  - P Retain Provisionally (custodial)
  - D Dispose (by sale)
  - X Dispose (through exchange)
- 

- C County
- S State

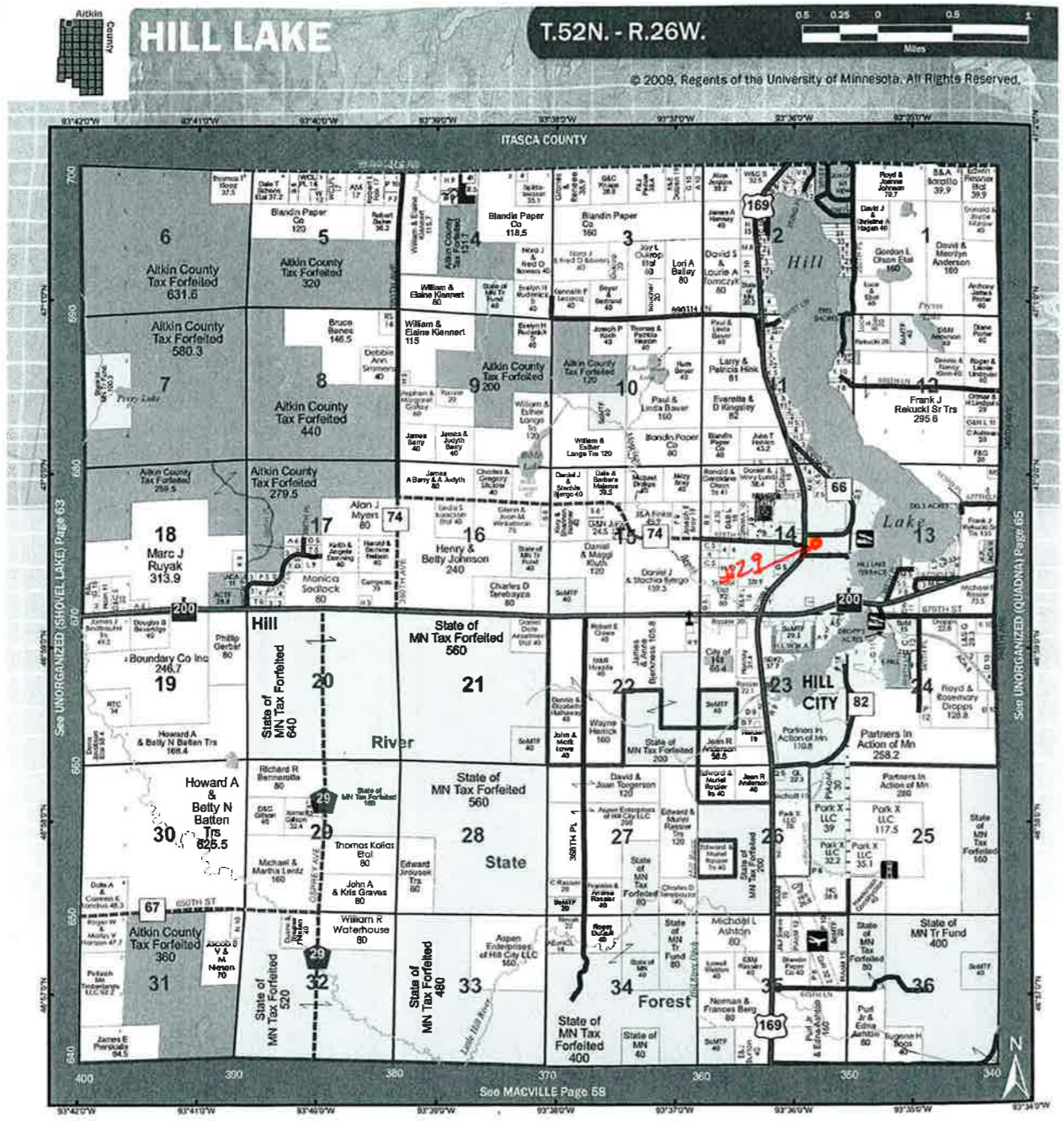


0 20 40 80 Feet  
Scale: 1:1,000

57-1-019900

11/21/2011 4:23:35 PM

These data are provided on an "AS-IS" basis, without warranty of any type, expressed or implied, including but not limited to any warranty as to their performance, merchantability, or fitness for any particular purpose.

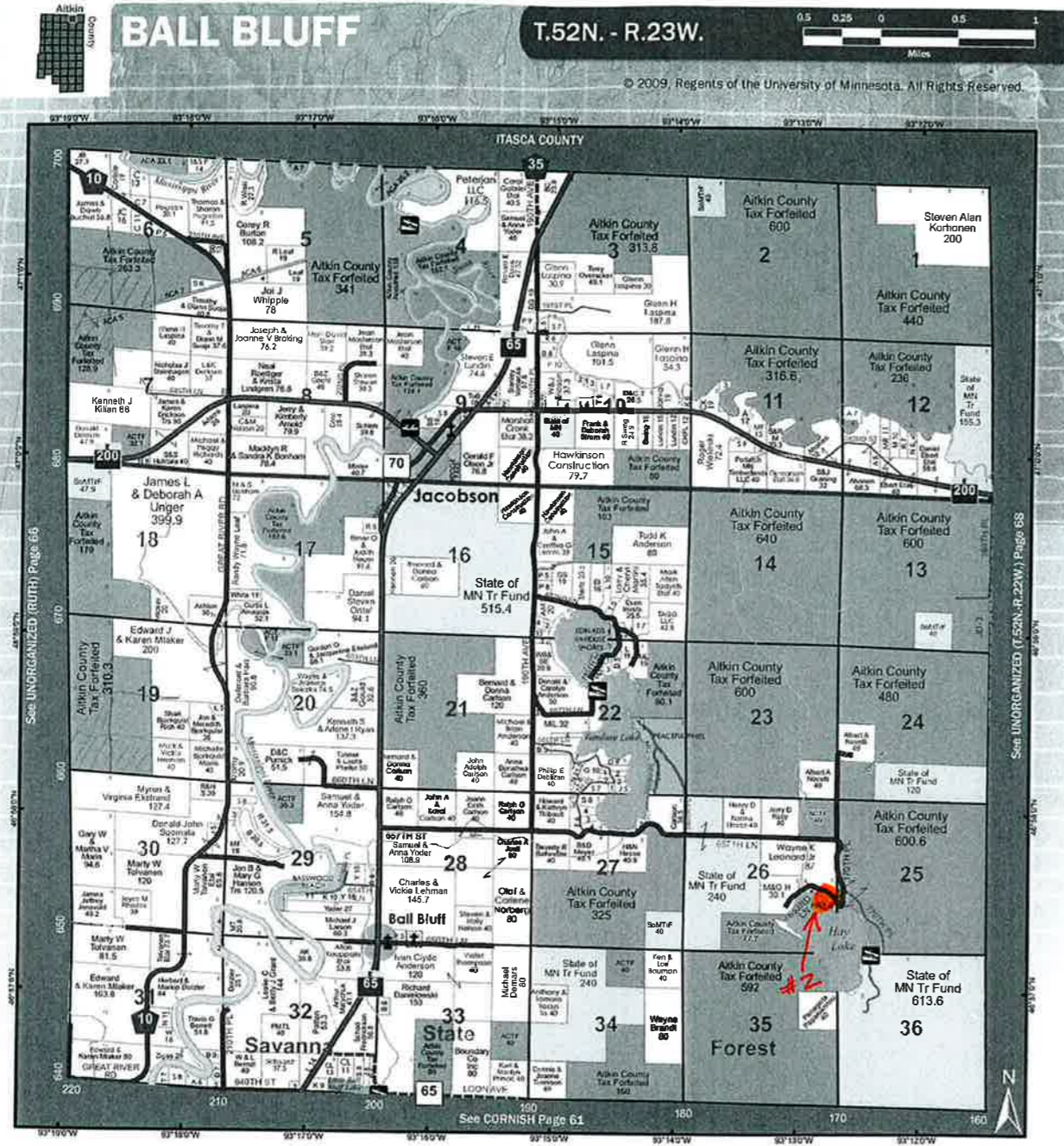


These data are provided on an "AS-IS" basis, without warranty of any type, expressed or implied, including but not limited to any warranty as to their performance, merchantability, or fitness for any particular purpose.

**02-1-066102**

11/21/2011 3:03:55 PM

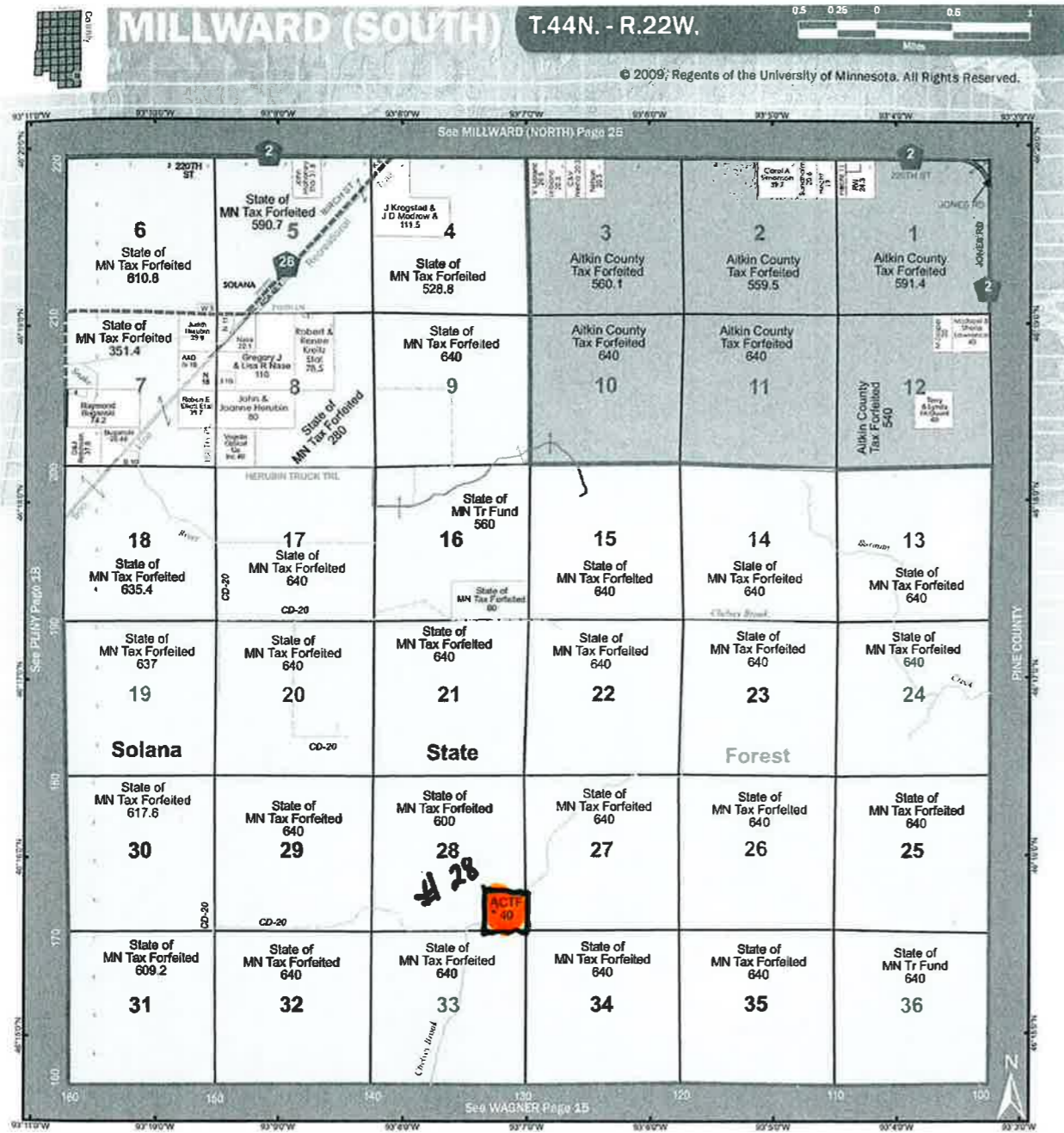


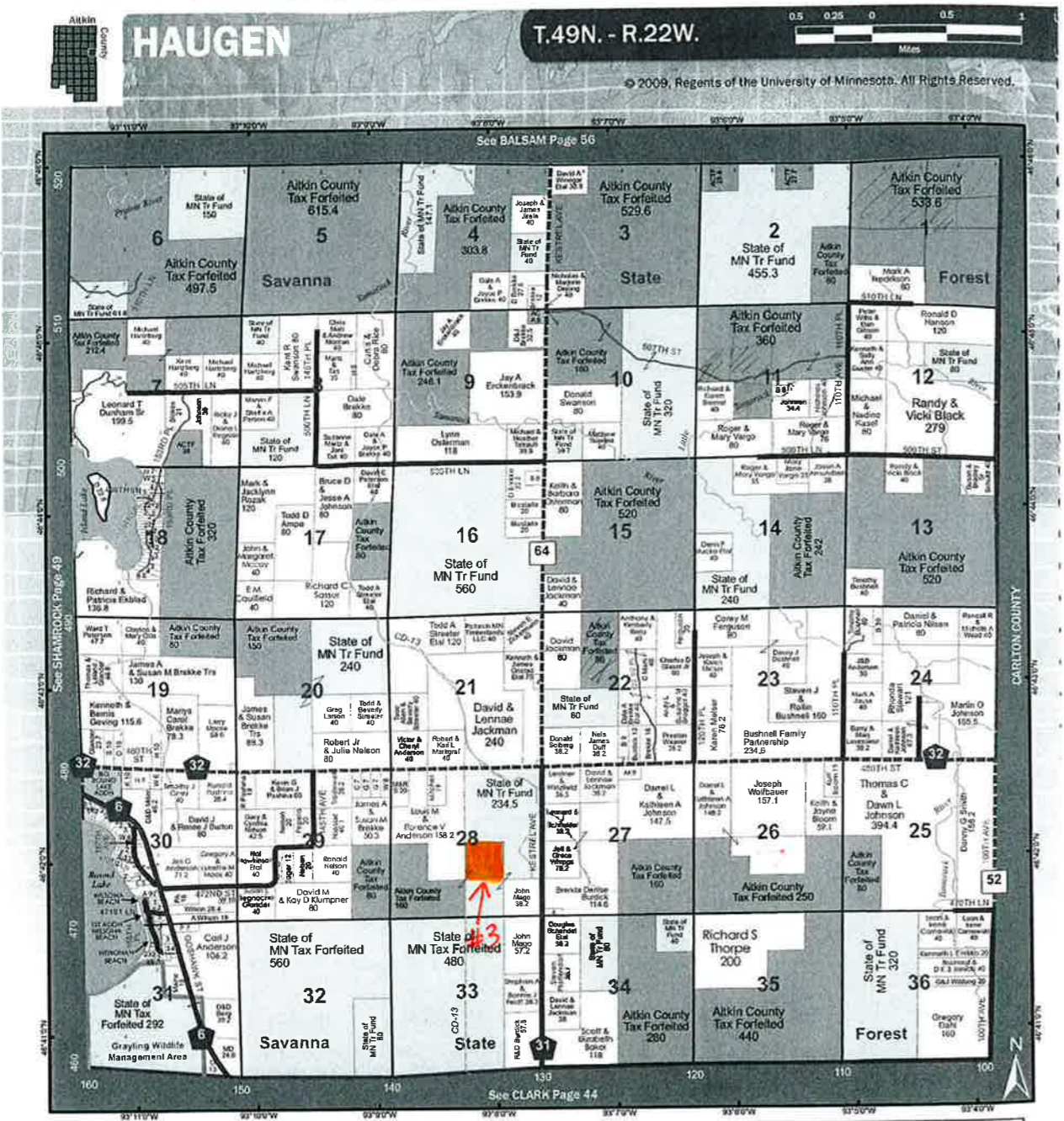


These data are provided on an "AS-IS" basis, without warranty of any type, expressed or implied, including but not limited to any warranty as to their performance, merchantability, or fitness for any particular purpose.

**41-0-073800**

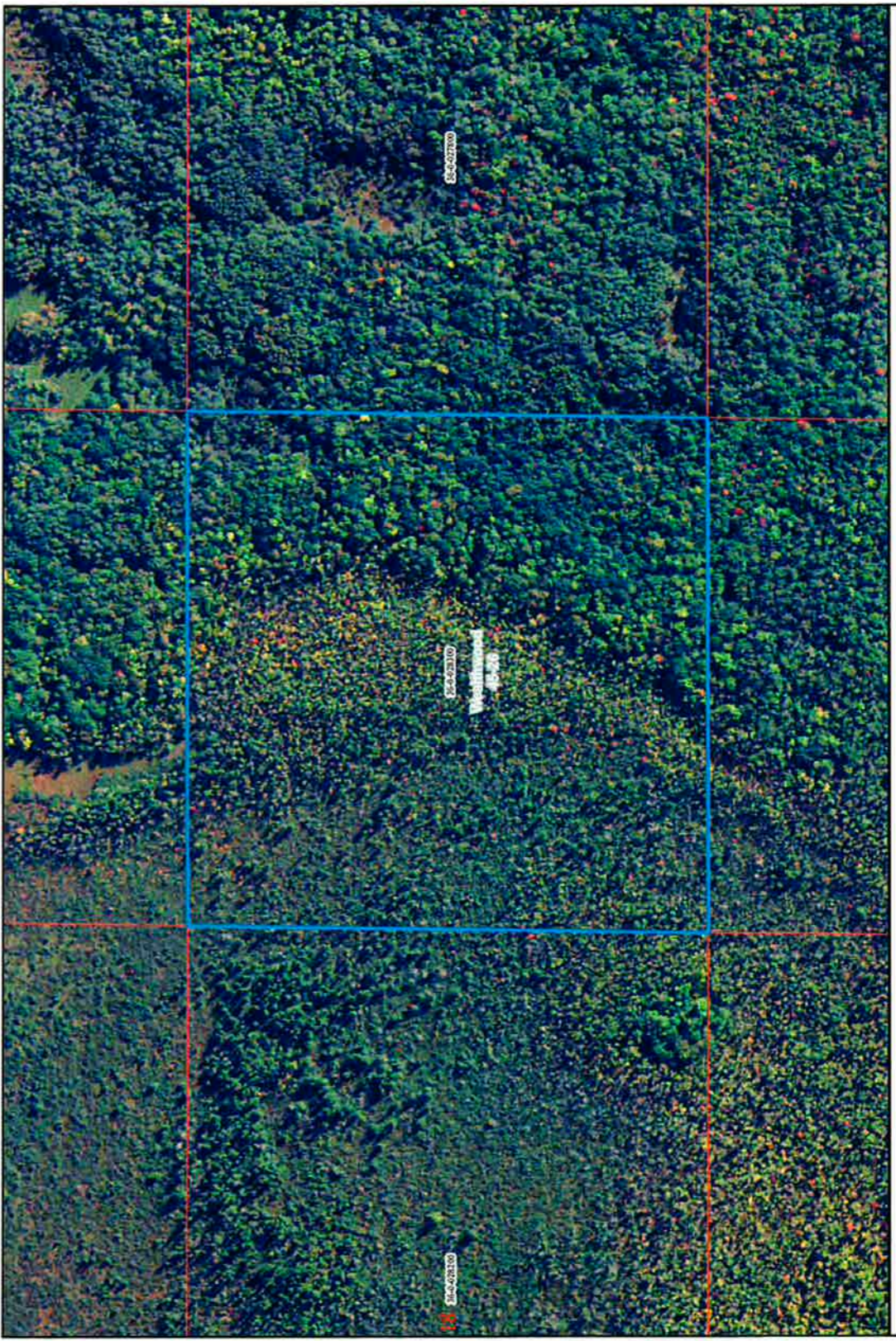
11/21/2011 4:33:09 PM



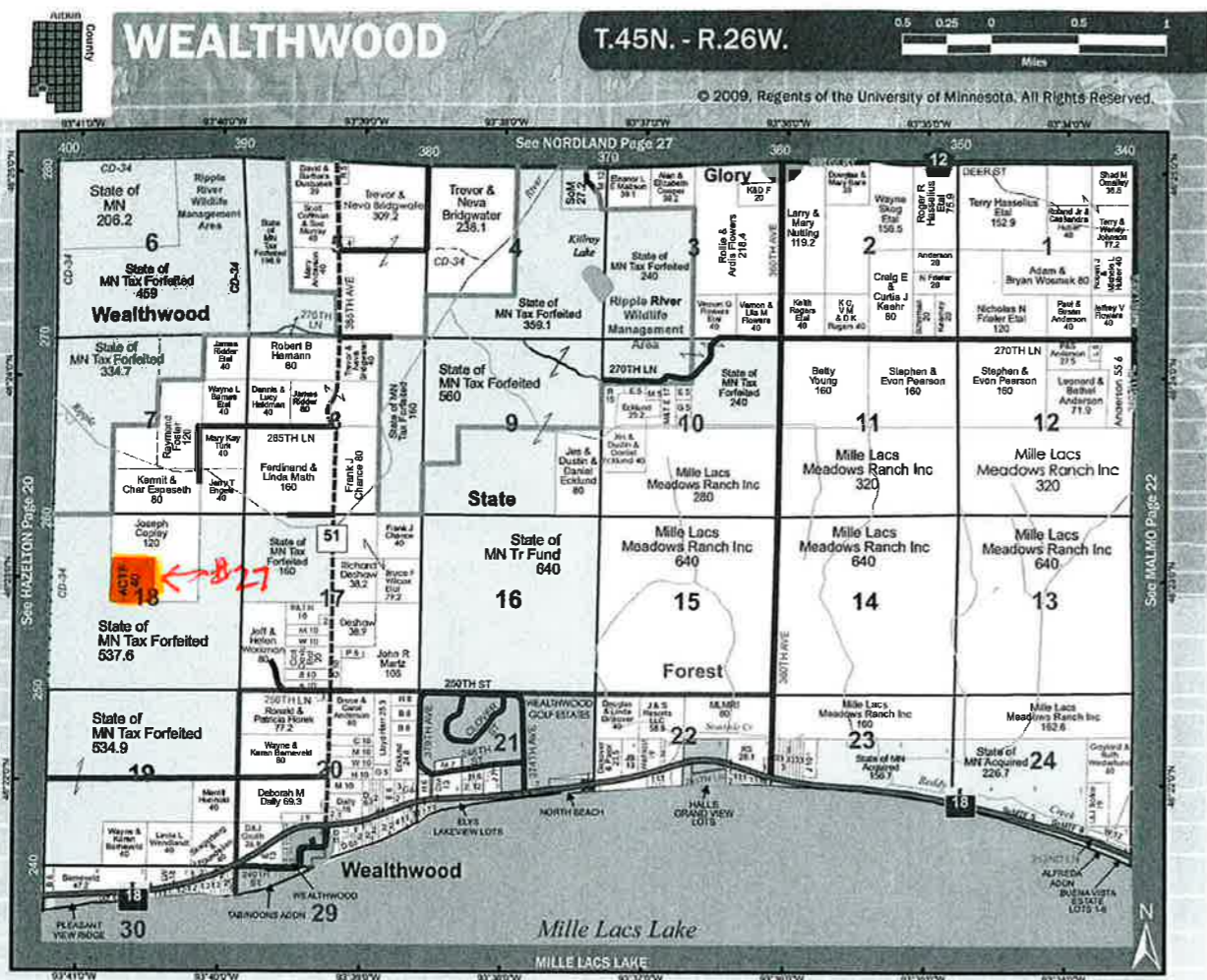


4H uses fun, hands-on activities where you learn by doing. But 4-H teaches you more than how to take good photographs or care for an animal. In 4-H, you learn how to work with others, solve problems, speak in public, be a leader and enjoy life. These skills can be used over and over again to help you be successful in school and life.

[www.mn4H.org](http://www.mn4H.org)



0 75 150 300 Feet  
 Scale: 1:3,947  
 36-0-028300  
 11/21/2011 4:27:13 PM



Serving Aitkin County for over 100 years

Dennis 218-927-3571  
Lyndon 218-534-3442

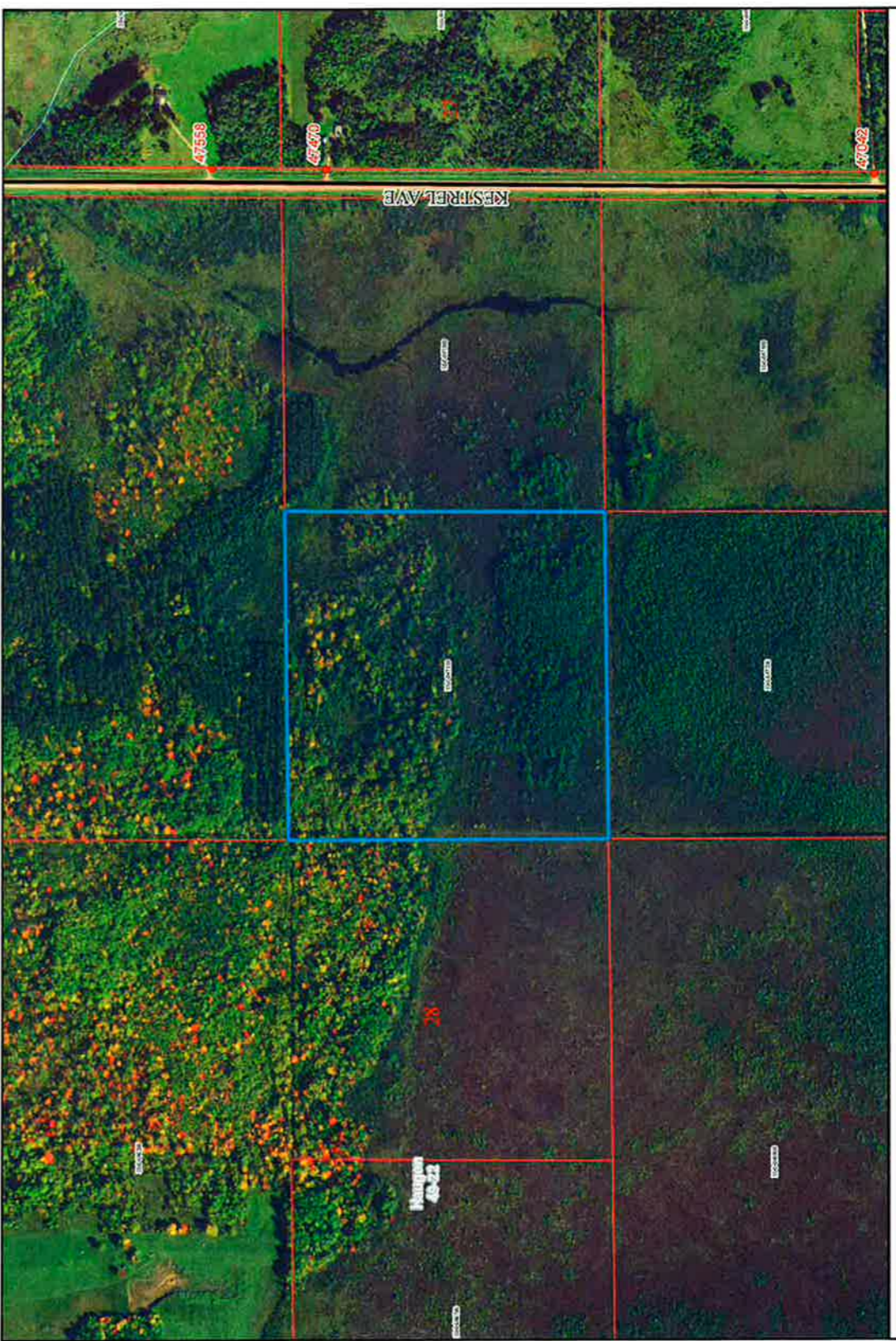
Hasskamp Bros. Well Drilling

Well Drilling & Repair  
Pump Sales & Services  
Well Abandonment

26744 State Hwy. 210 • Aitkin, MN • 56431

**AITKIN COUNTY**  
**Farm Bureau**  
**Federation**

Roger Hanson (218) 549-3155

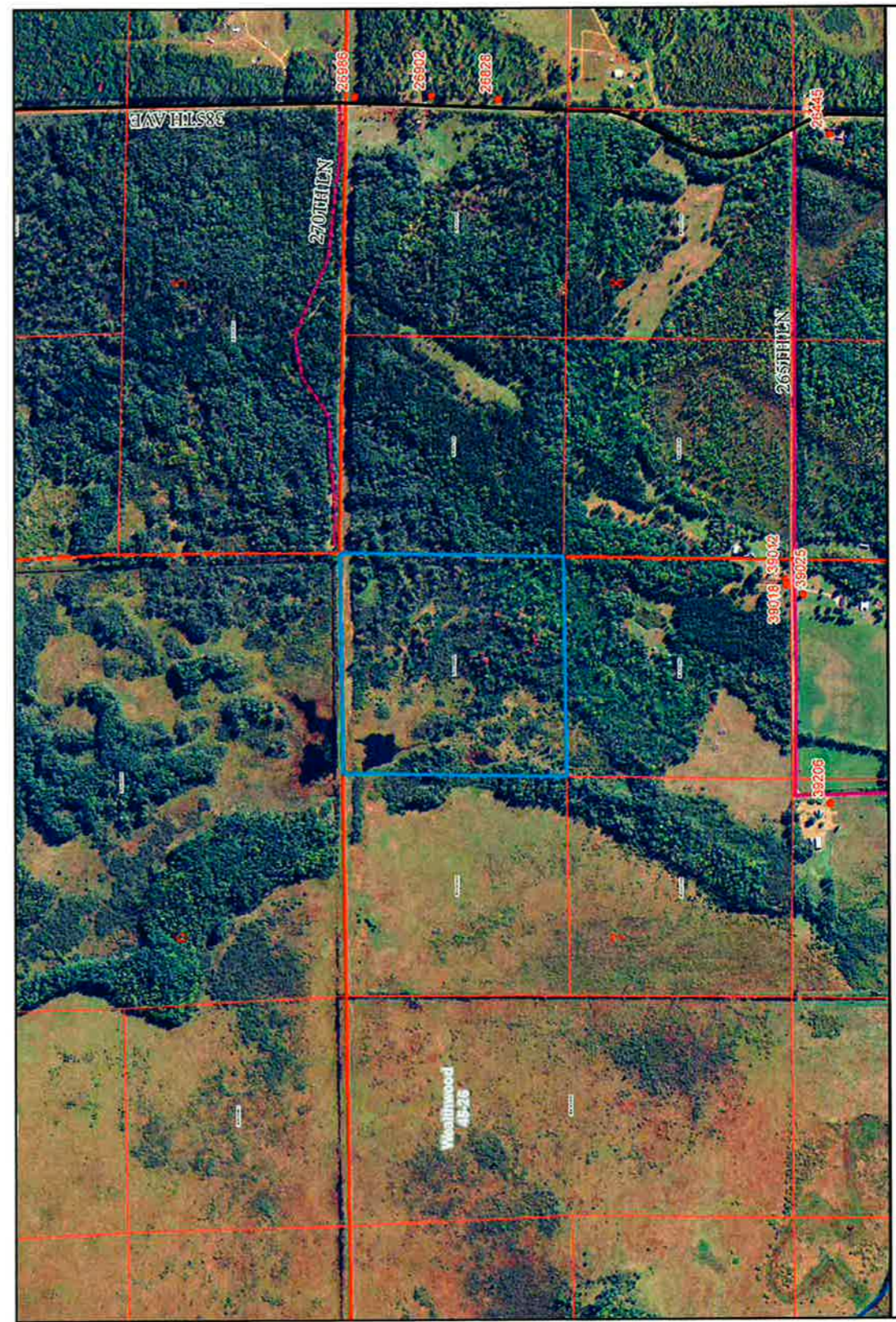
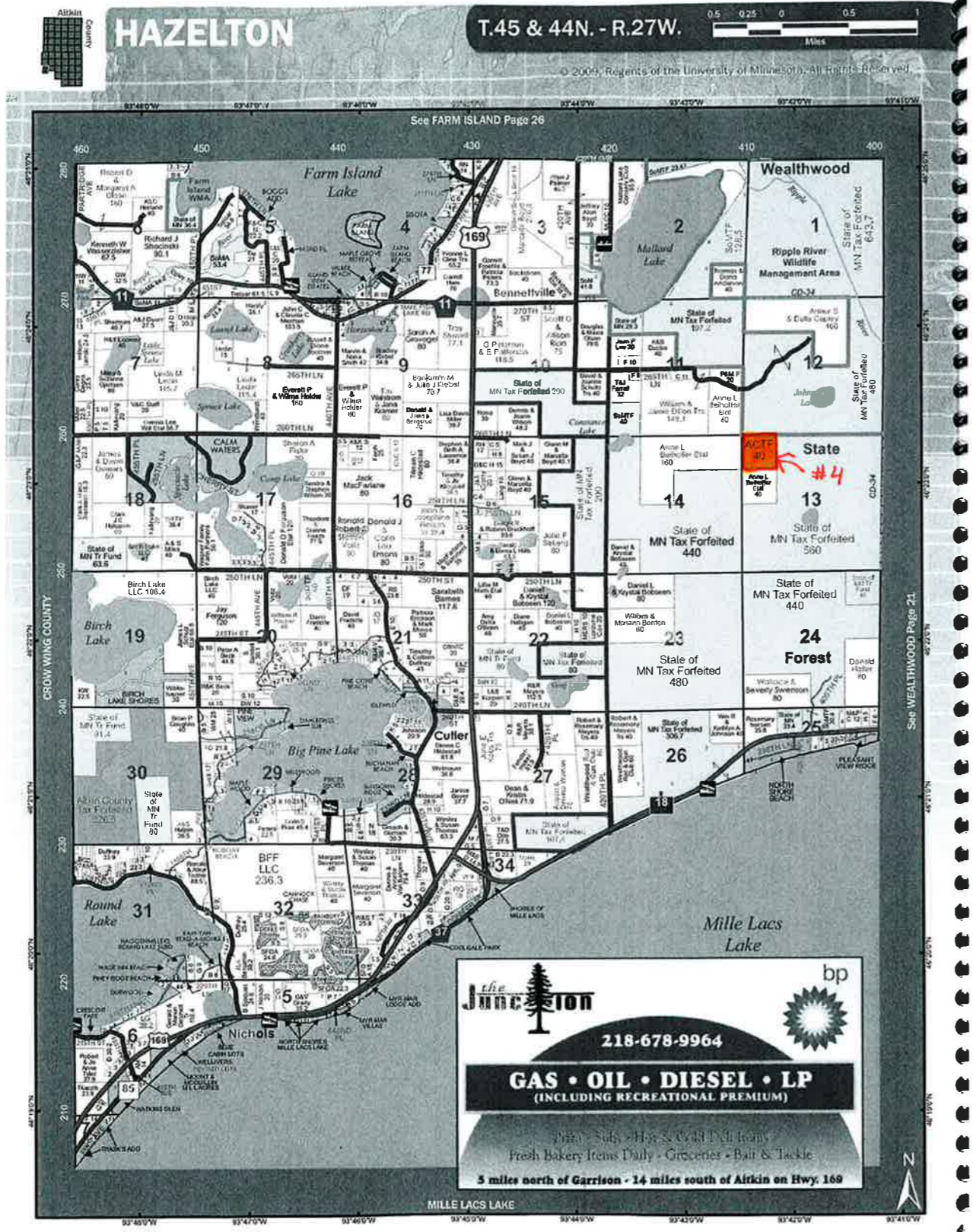


These data are provided on an "AS-IS" basis, without warranty of any type, expressed or implied, including but not limited to any warranty as to their performance, merchantability, or fitness for any particular purpose.

**10-0-047100**

11/21/2011 3:09:08 PM

0 125 250 500 Feet  
Scale: 1:6,214

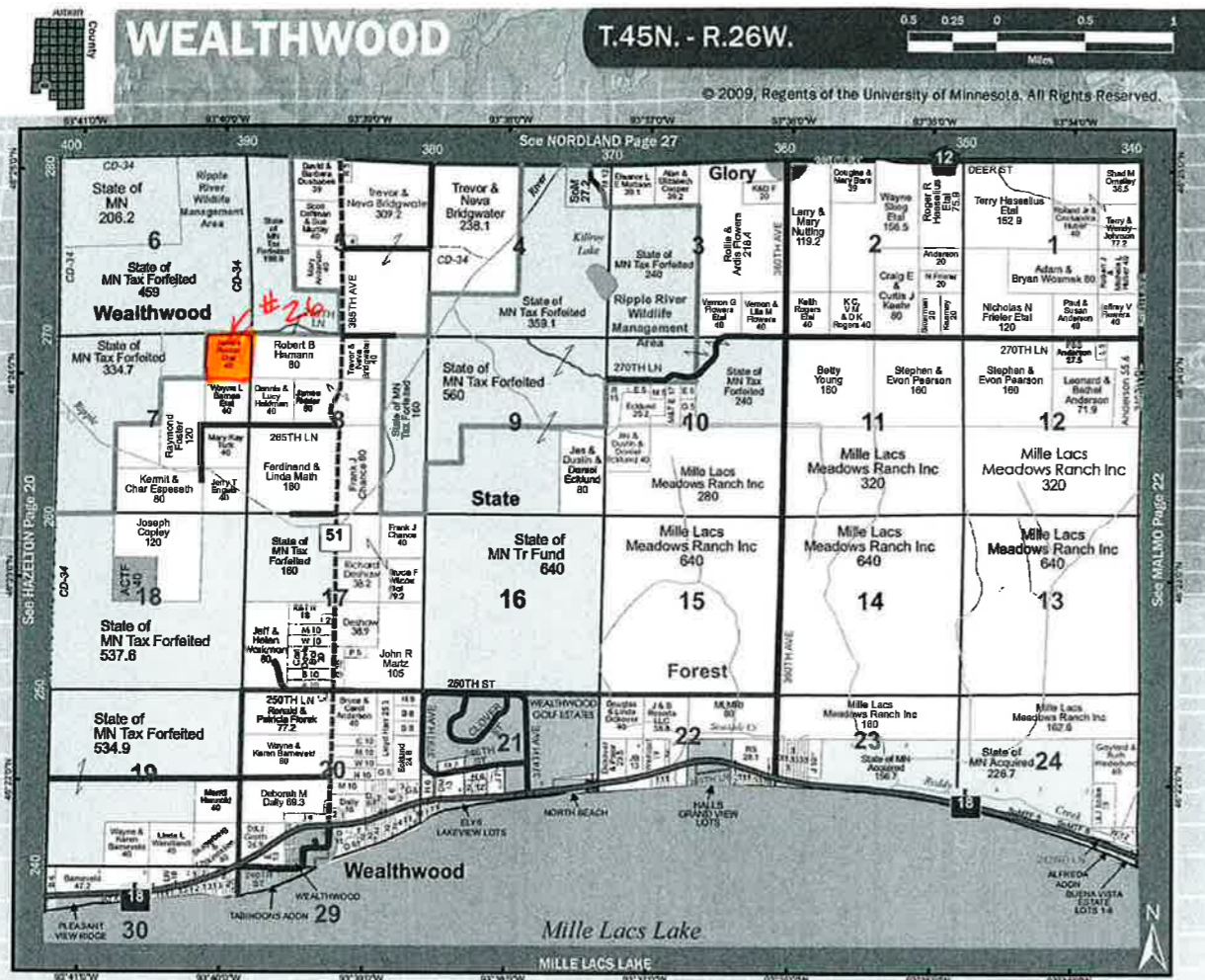


These data are provided on an "AS-IS" basis, without warranty of any type, expressed or implied, including but not limited to any warranty as to their performance, merchantability, or fitness for any particular purpose.

**36-0-009900**

11/21/2011 4:22:05 PM

0 165330 660 Feet  
Scale: 1:8,952



Serving Aitkin County for over 100 years

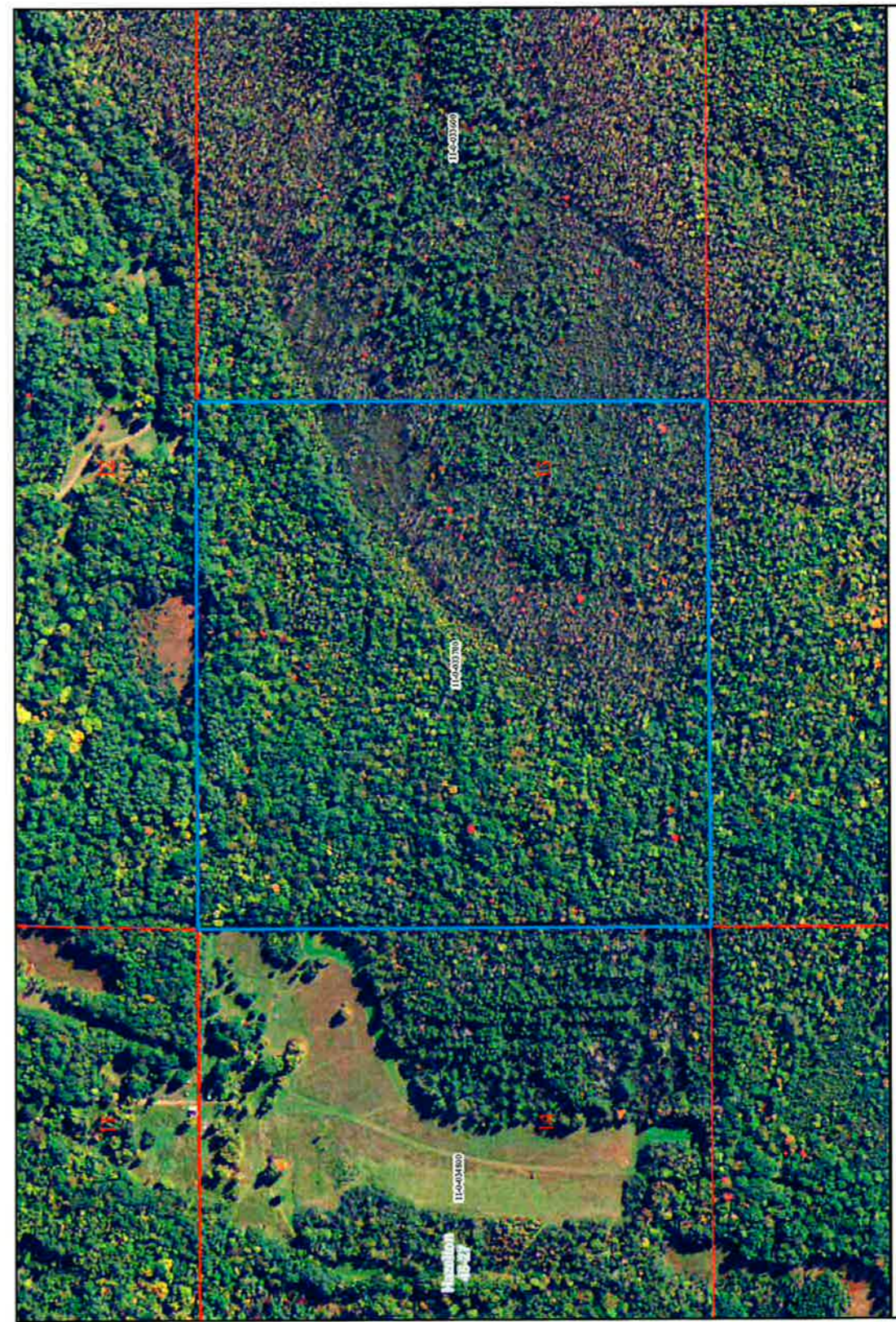
Dennis 218-927-3571  
Lyndon 218-534-3442

Well Drilling & Repair  
Pump Sales & Services  
Well Abandonment

26744 State Hwy. 210 • Aitkin, MN • 56431

**AITKIN COUNTY**  
**Farm Bureau**  
**Federation**

Roger Hanson (218) 549-3155

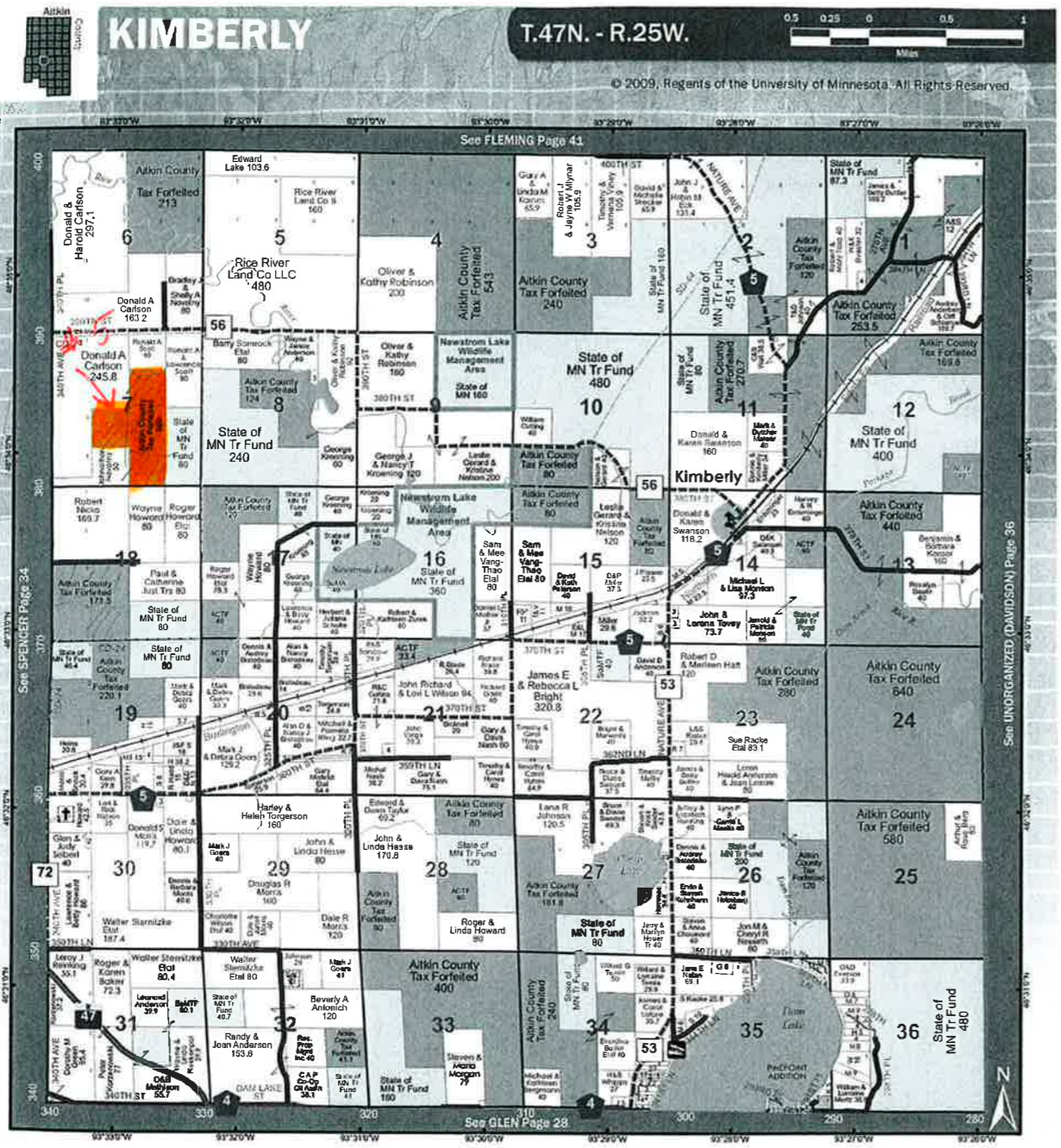


These data are provided on an "AS-IS" basis, without warranty of any type, expressed or implied, including but not limited to any warranty as to their performance, merchantability, or fitness for any particular purpose.

**11-0-033700**

11/21/2011 4:30:28 PM

0 75 150 300 Feet  
Scale: 1:3,896

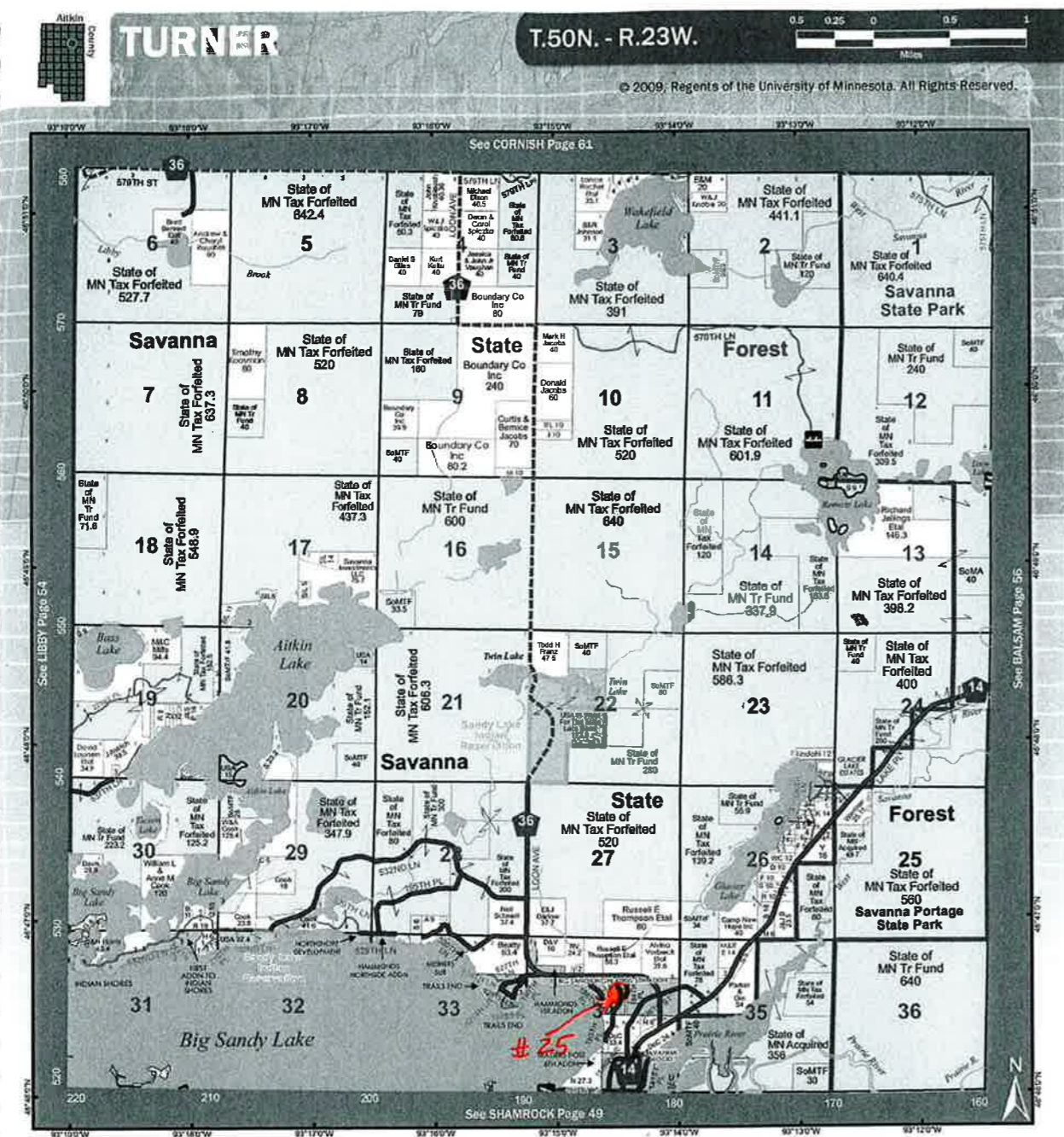


0 20 40 80 Feet  
Scale: 1:1,000

11/21/2011 4:20:50 PM

**32-1-066600**

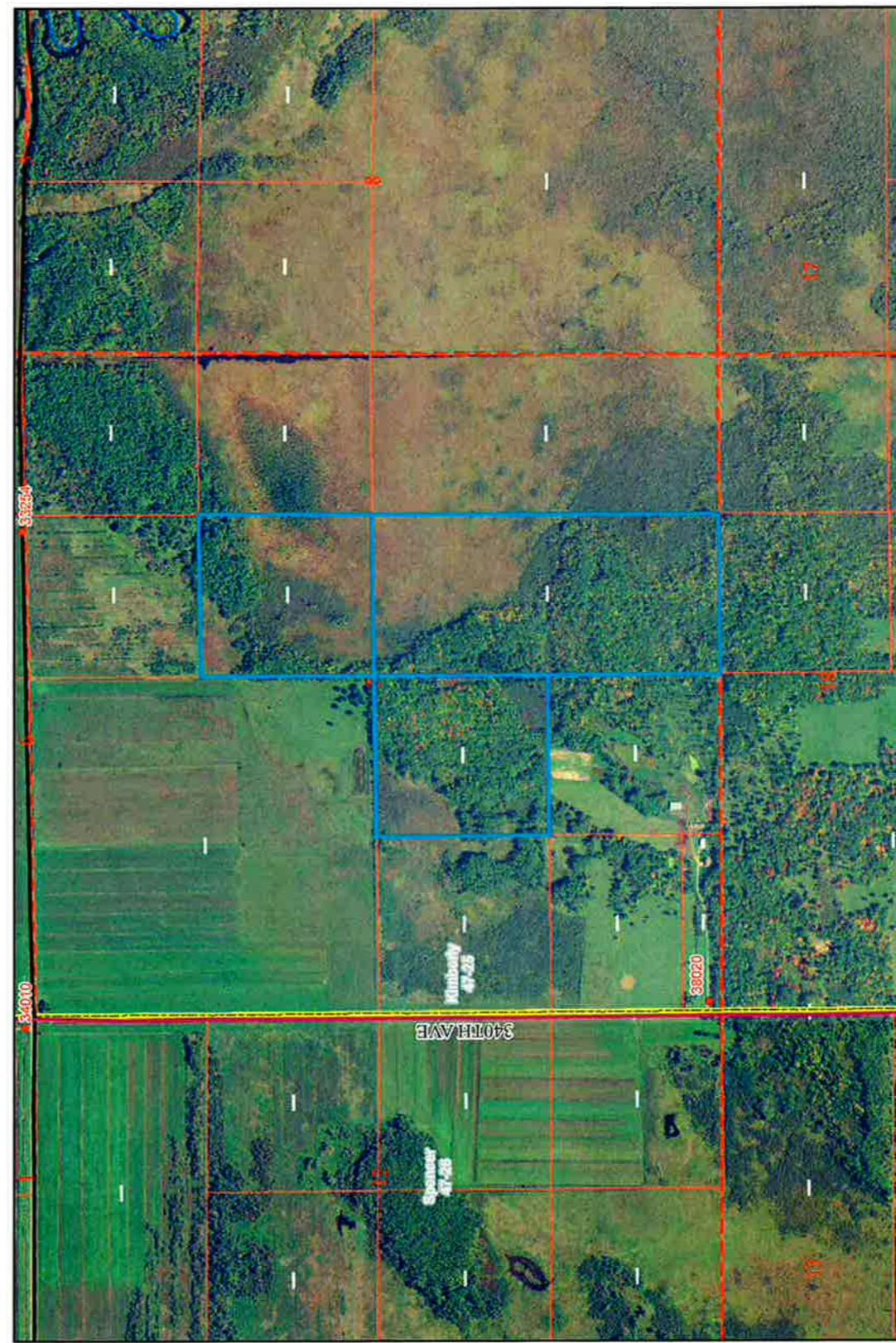
These data are provided on an "AS-IS" basis, without warranty of any type, expressed or implied, including but not limited to any warranty as to their performance, merchantability, or fitness for any particular purpose.



4-H connects kids with their families, communities and the world. Parents, screened volunteers and 4-H staff share their time and talents to help 4-Hers learn by doing. Working on projects together builds relationships and makes families stronger.

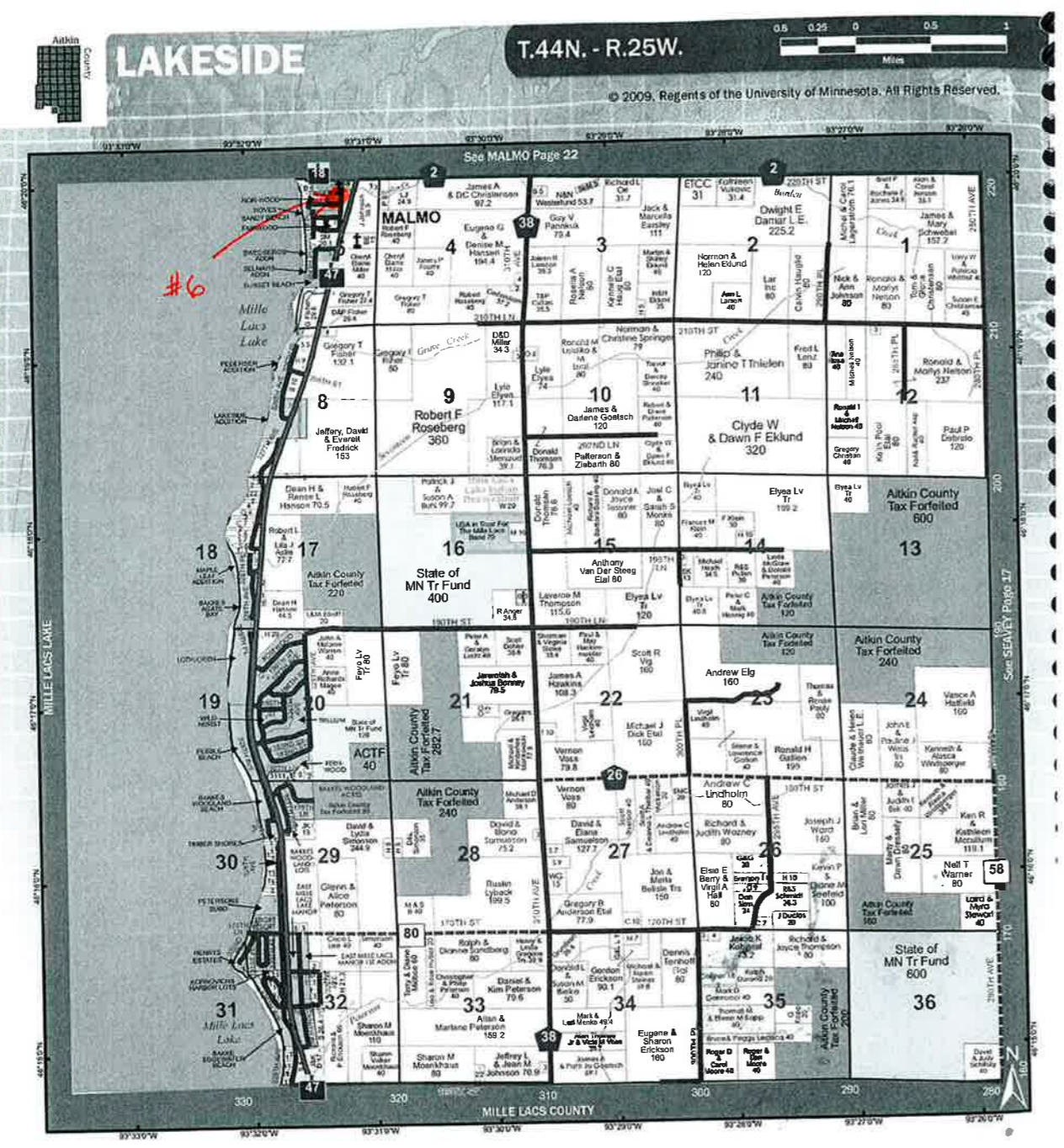


4-H members connect with their communities by devoting time to service projects like helping the elderly and caring for the environment. Kids in 4-H Clubs say they feel a greater sense of belonging and enjoy contributing back to their community.



0 215430 860 Feet  
 15-0-012500, 15-0-012000, 15-0-011400  
 Scale: 1:11,685  
 11/21/2011 3:39:28 PM  
 These data are provided on an "AS-IS" basis. No warranty of any type, express or implied, including but not limited to any warranty as to their performance, merchantability, or fitness for any particular purpose.



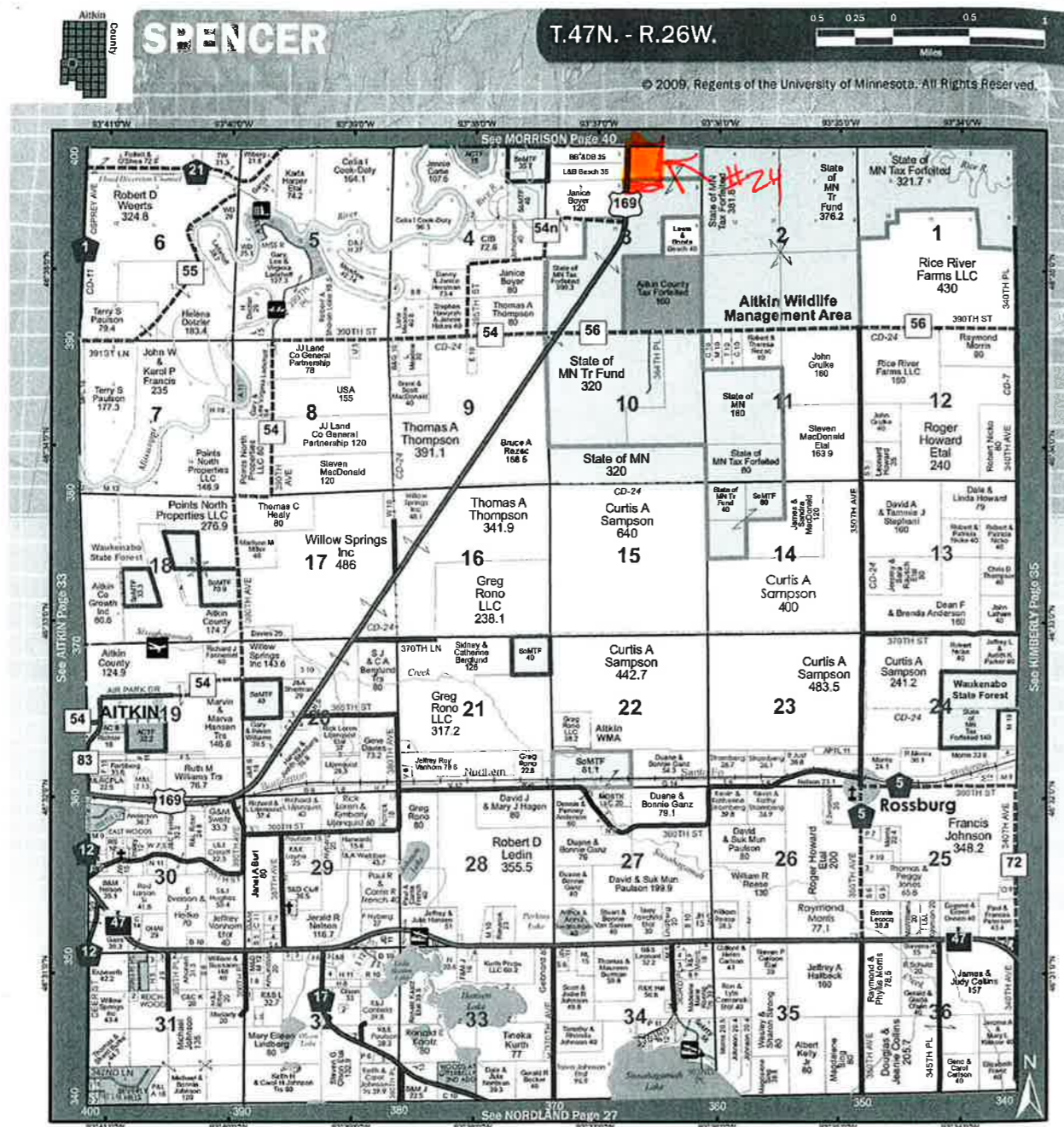


These data are provided on an "AS-IS" basis, without warranty of any type, expressed or implied, including but not limited to any warranty as to their performance, merchantability, or fitness for any particular purpose.

**31-0-006900**

11/21/2011 4:18:04 PM

0 40 80 160 Feet  
Scale: 1:2,000



These data are provided on an "AS-IS" basis, without warranty of any type, expressed or implied, including but not limited to any warranty as to their performance, merchantability, or fitness for any particular purpose.

**16-0-008400**

11/21/2011 3:41:09 PM

0 40 80 160 Feet

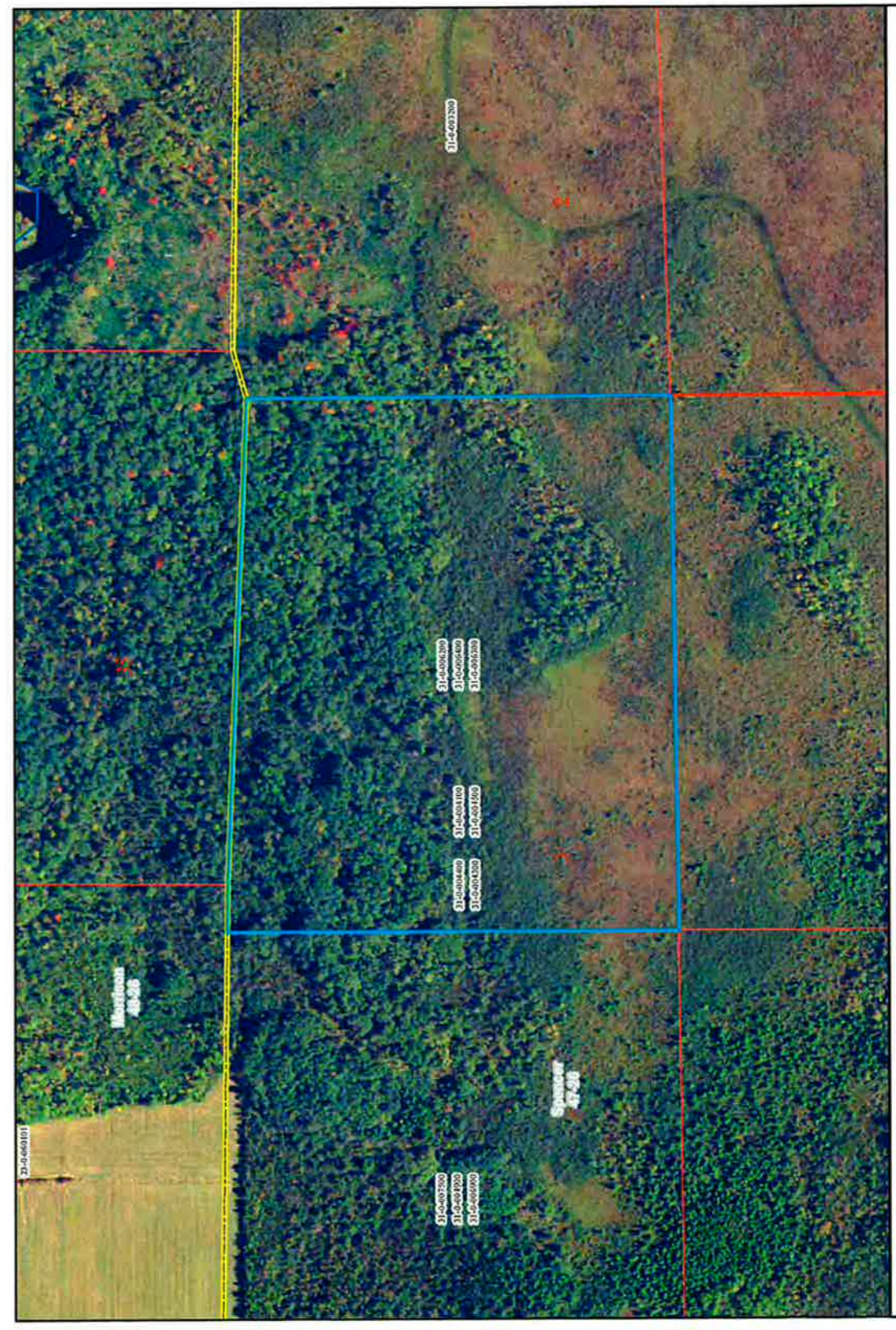
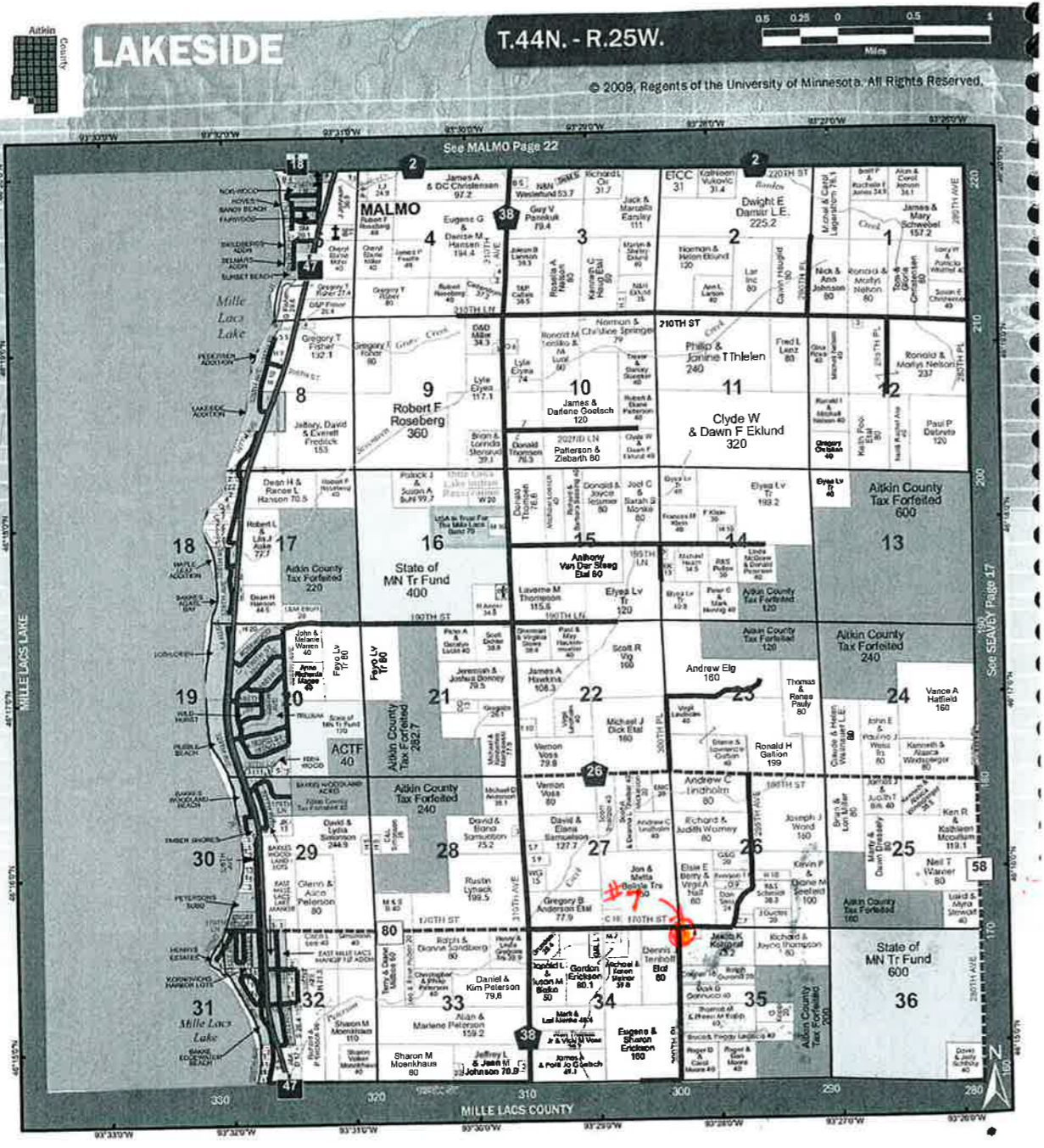
Scale: 1:2,000

**SECURITY STATE INSURANCE**

E-Mail: [securitystate@charterinternet.com](mailto:securitystate@charterinternet.com)

**4 Locations To Serve You**

Aitkin	Isle	Grand Marais	Onamia
218-927-3712	320-676-3795	218-387-1540	320-532-3233

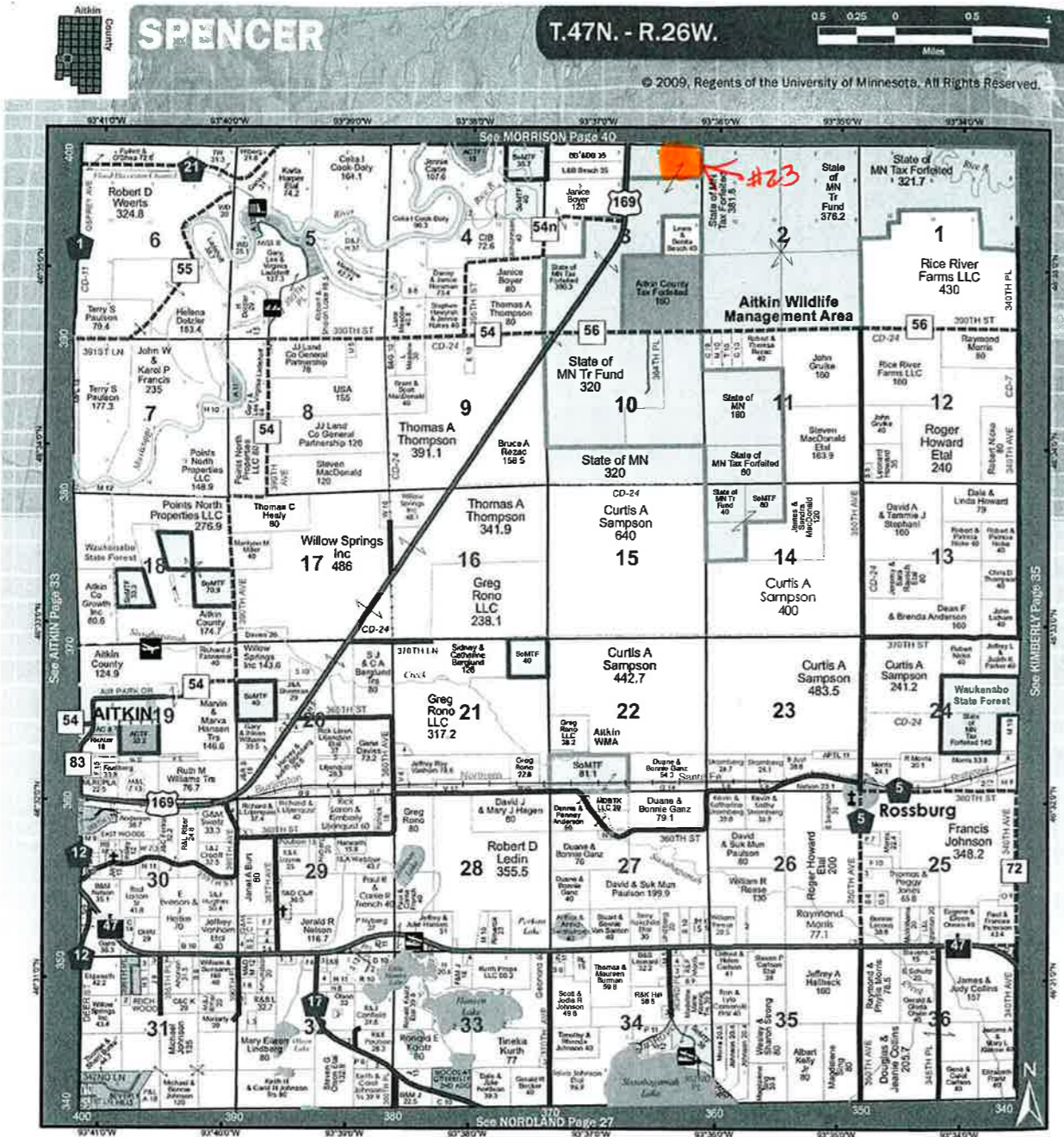


0 75 150 300 Feet  
 Scale: 1:3,730

1/32int 31-0-006400

11/21/2011 4:17:03 PM

These data are provided on an "AS-IS" basis, without warranty of any type, expressed or implied, including but not limited to any warranty as to their performance, merchantability, or fitness for any particular purpose.



These data are provided on an "AS-IS" basis, without warranty of any type, expressed or implied, including but not limited to any warranty as to their performance, merchantability, or fitness for any particular purpose.

**16-0-050800**

11/21/2011 3:42:09 PM

0 40 80 160 Feet

Scale: 1:2,000

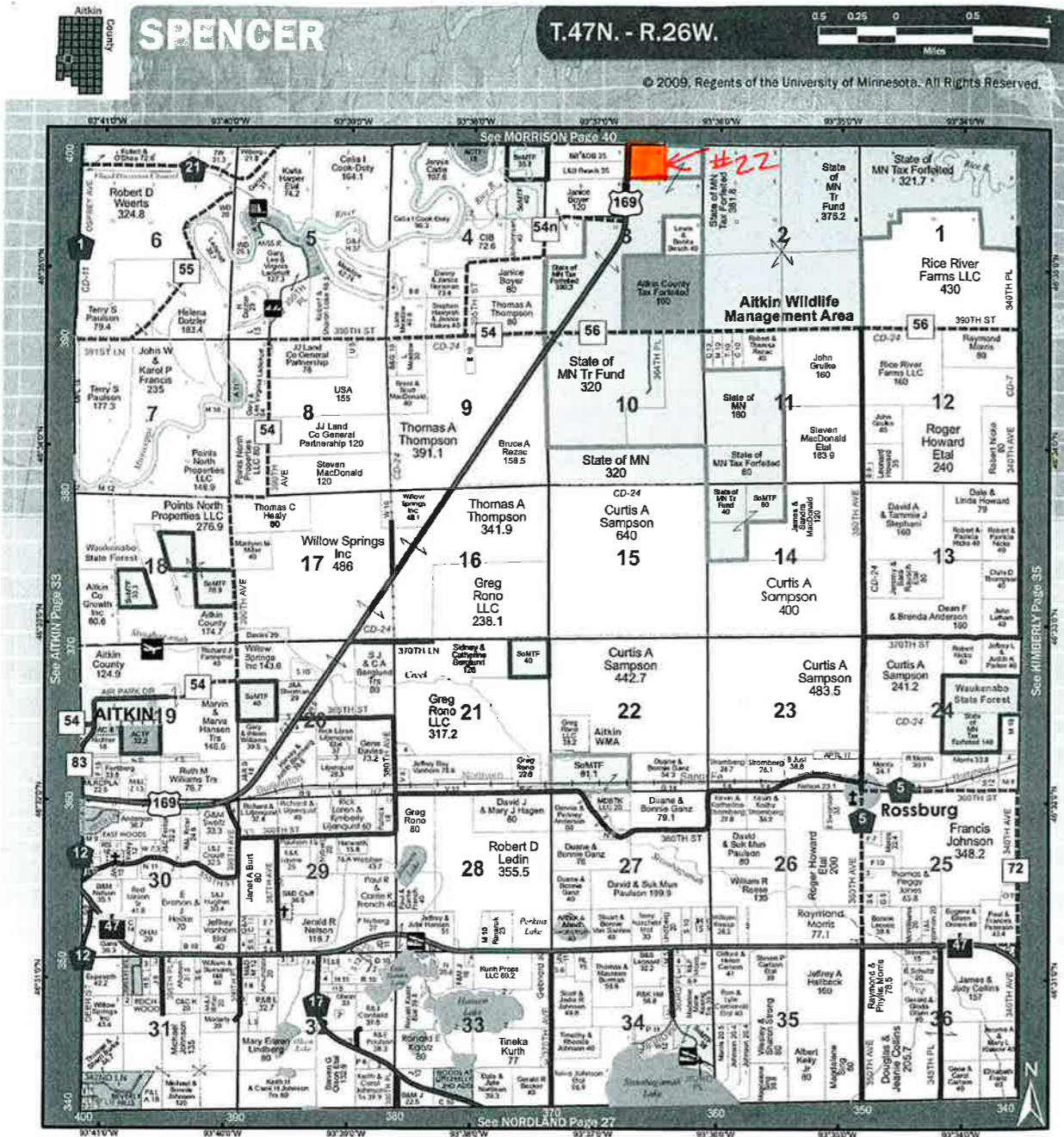
**SECURITY STATE INSURANCE**

E-Mail: [securitystate@charternet.com](mailto:securitystate@charternet.com)

**4 Locations To Serve You**

Aitkin	Isle	Grand Marais	Onamia
218-927-3712	320-676-3795	218-387-1540	320-532-3233



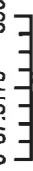


These data are provided on an "AS-IS" basis, without warranty of any type, expressed or implied, including but not limited to any warranty as to their performance, merchantability, or fitness for any particular purpose.

20-0-006901

11/21/2011 3:44:14 PM

0 87.5175 350 Feet



Scale: 1:4,476

**SECURITY STATE INSURANCE**

E-Mail: [securitystate@charterinternet.com](mailto:securitystate@charterinternet.com)

4 Locations To Serve You

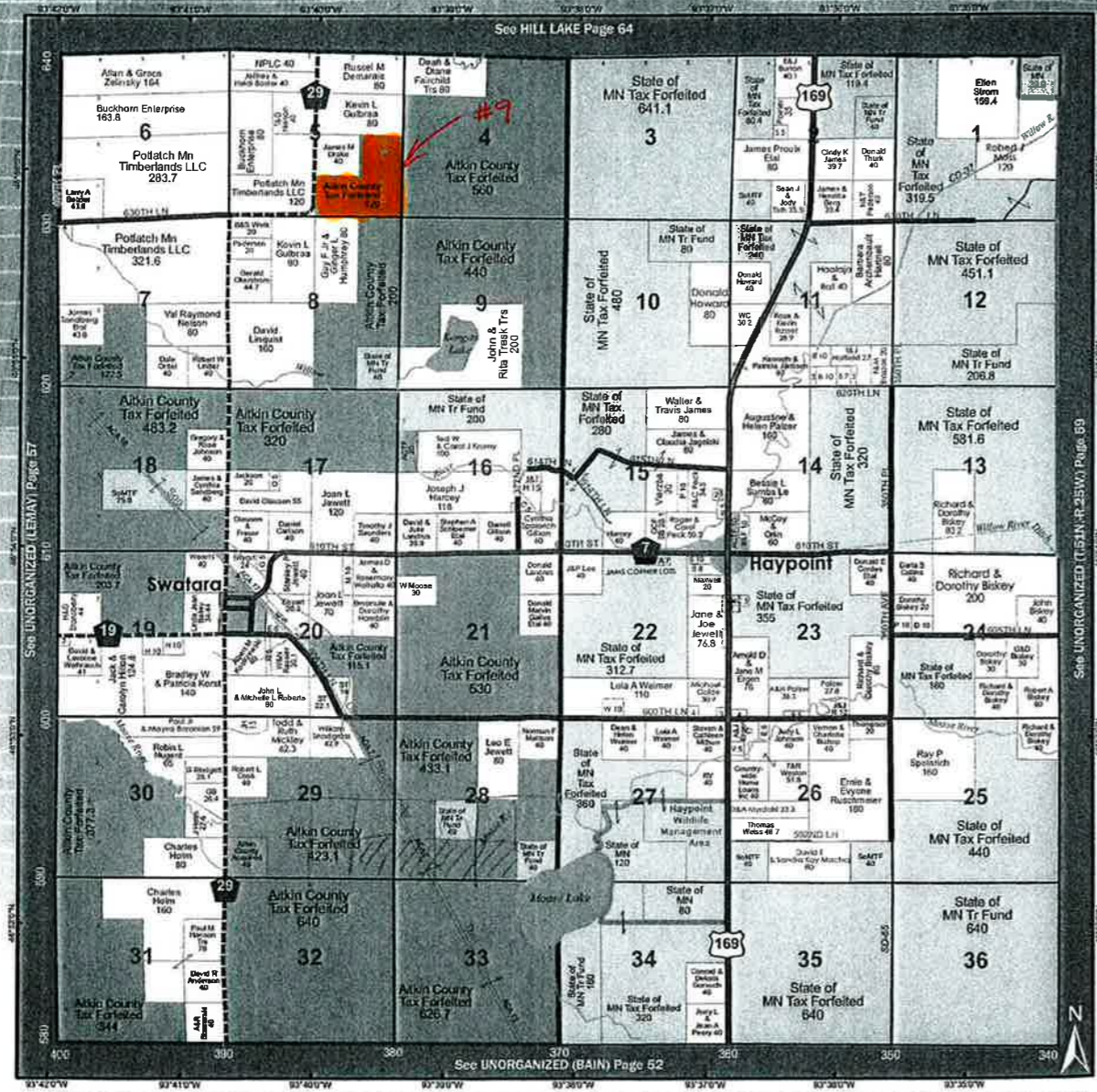
Aitkin	Isle	Grand Marais	Onamia
218-827-3712	320-676-3795	218-387-1540	320-532-3233

# MACVILLE

T.51N. - R.26W.

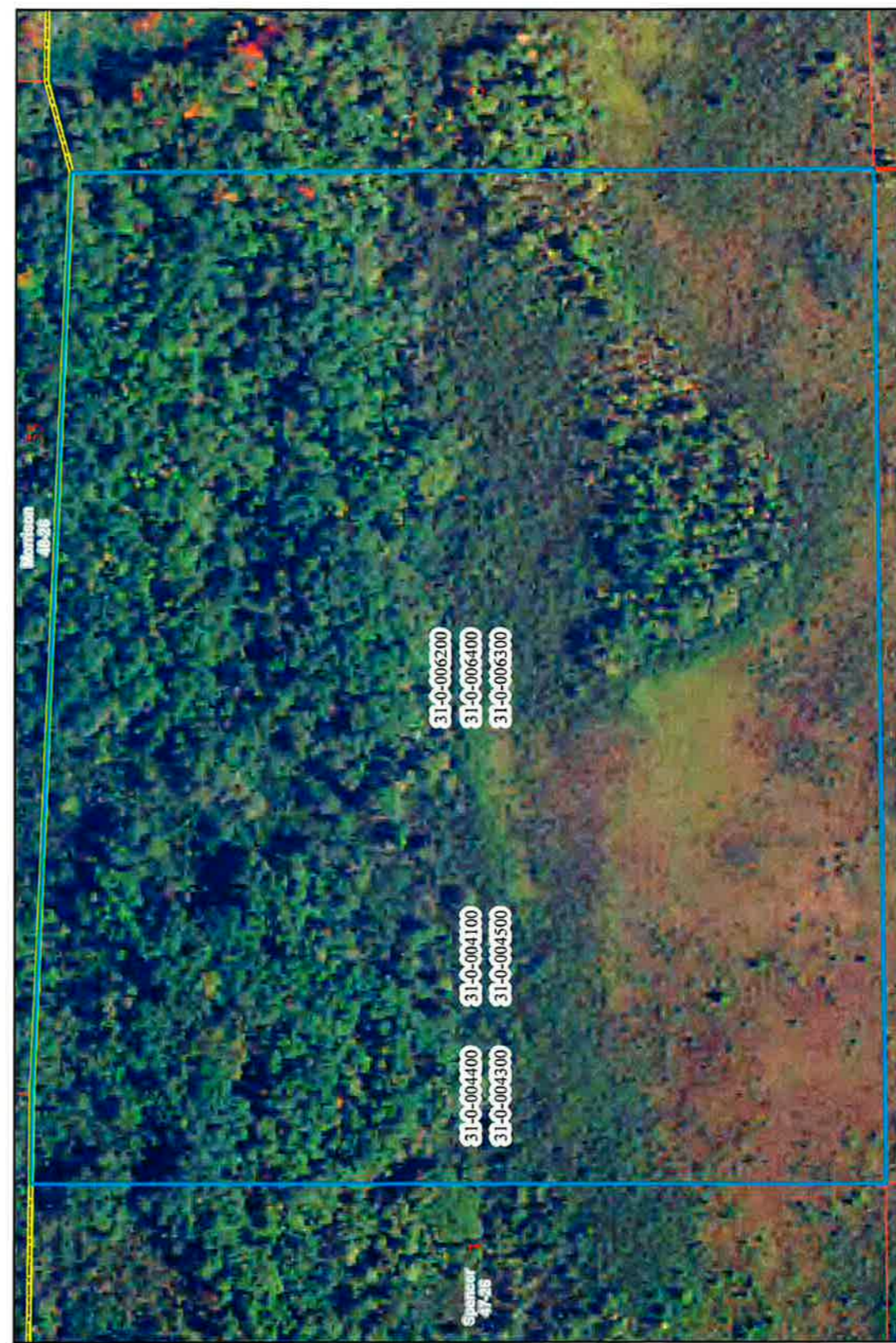


© 2009, Regents of the University of Minnesota. All Rights Reserved.



### 4-H Pledge

I pledge my *Head* to clearer thinking,  
 my *Heart* to greater loyalty,  
 my *Hands* to larger service,  
 and my *Health* to better living,  
 for my family, my club, my community, my country and my world.



31-0-006200  
 31-0-006400  
 31-0-006300

31-0-004100  
 31-0-004500

31-0-004400  
 31-0-004300

These data are provided on an "AS-IS" basis, without warranty of any type, expressed or implied, including but not limited to any warranty as to their performance, merchantability, or fitness for any particular purpose.

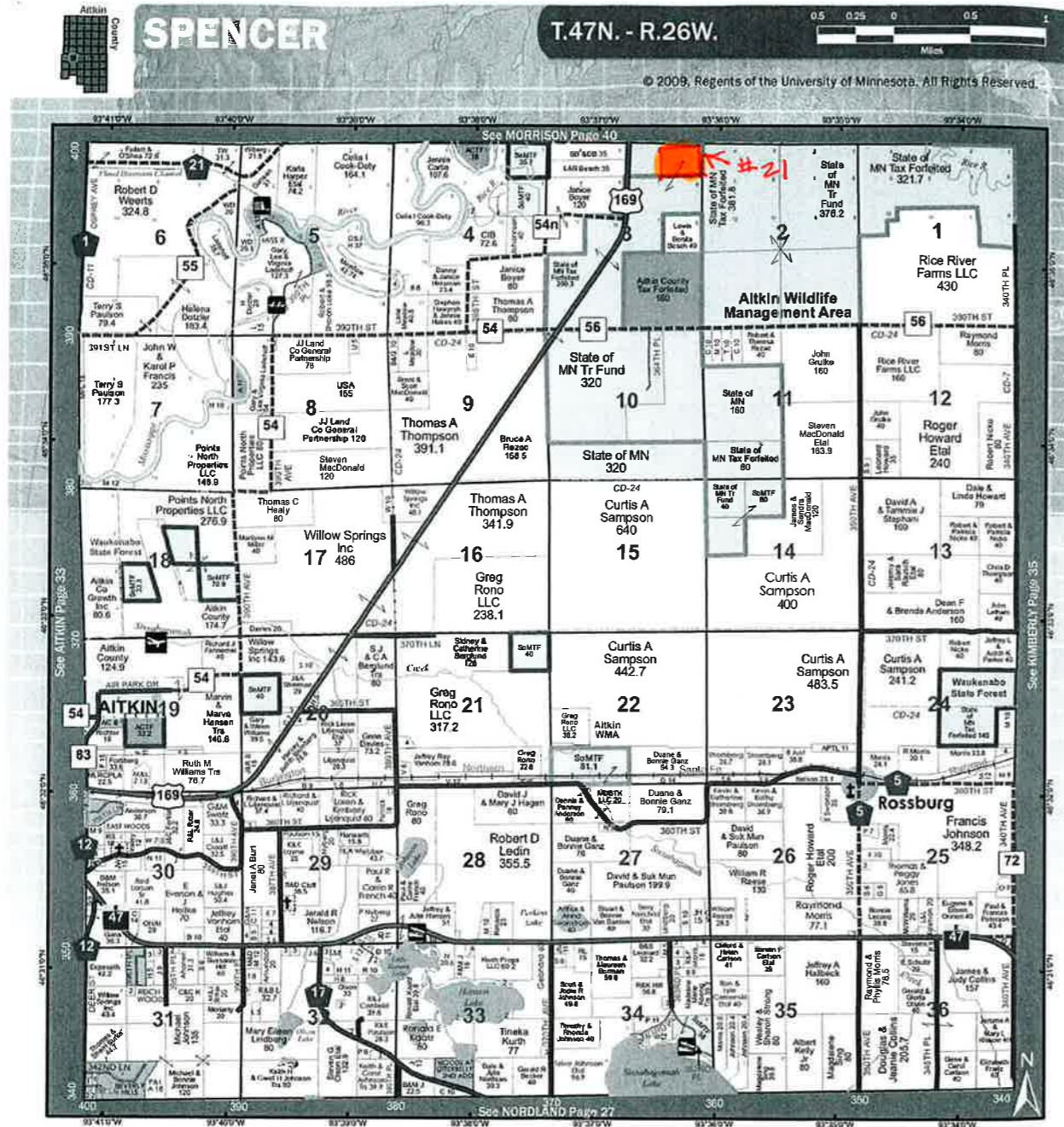
1/6th int 31-0-004400

11/21/2011 4:14:13 PM

0 40 80 160 Feet



Scale: 1:2,000



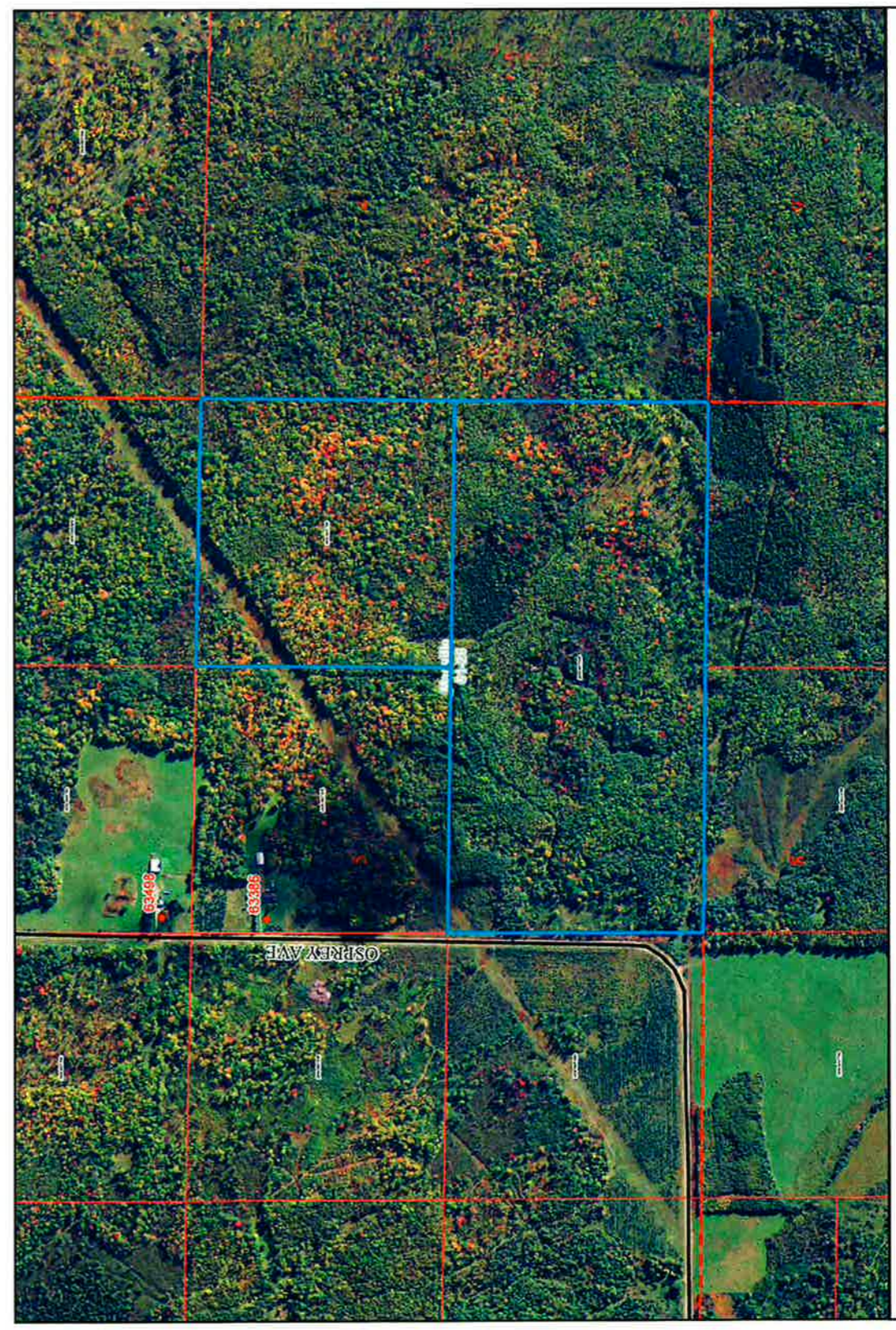
**SECURITY STATE INSURANCE**

E-Mail: [securitystate@charterinternet.com](mailto:securitystate@charterinternet.com)

**4 Locations To Serve You**

Aitkin    Isle    Grand Marais    Onamia

218-927-3712    320-676-3795    218-387-1540    320-532-9233



0 150300 600 Feet

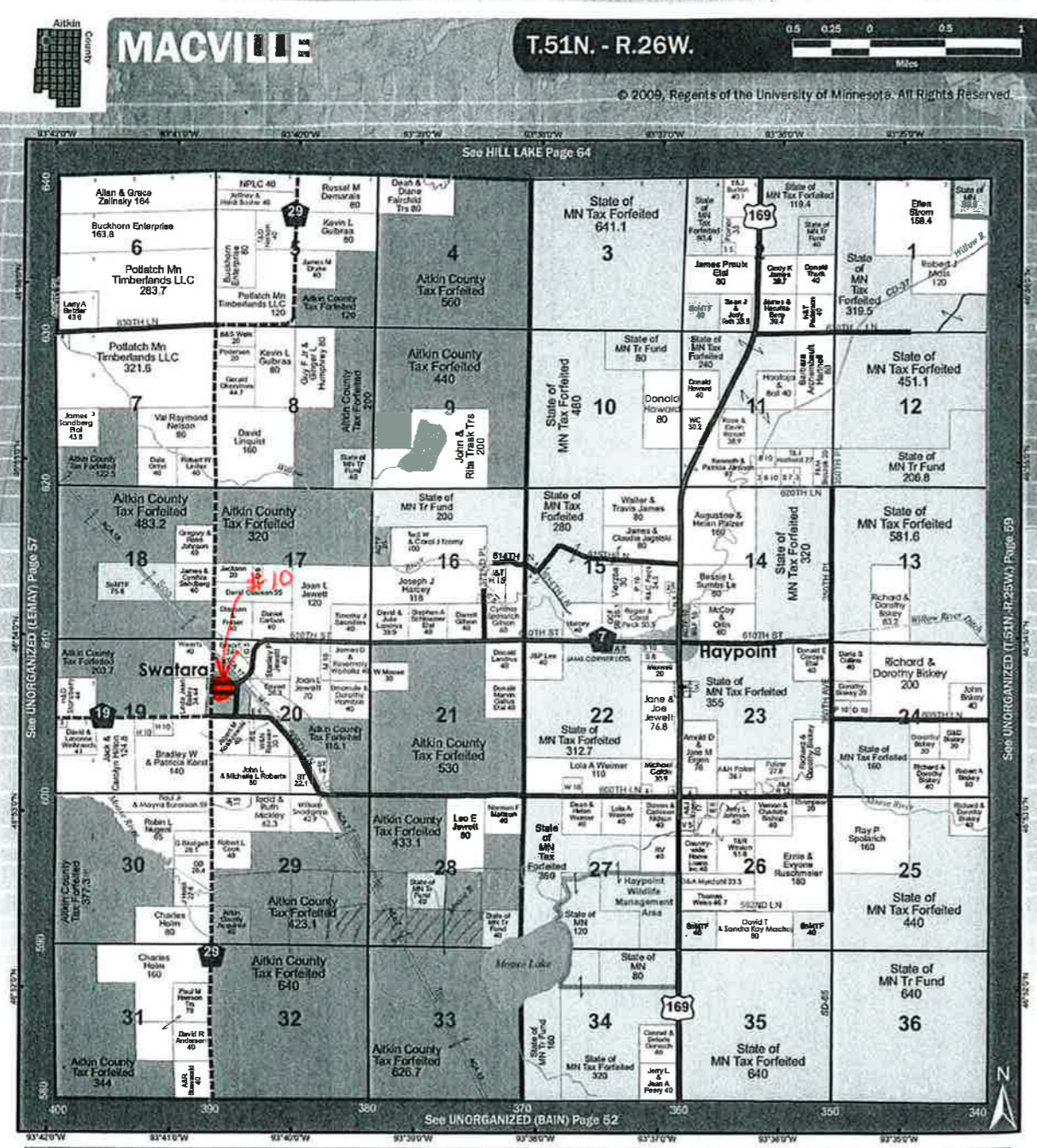
Scale: 1:7,702

11/21/2011 3:50:08 PM

**20-0-007700, 20-0-007900**

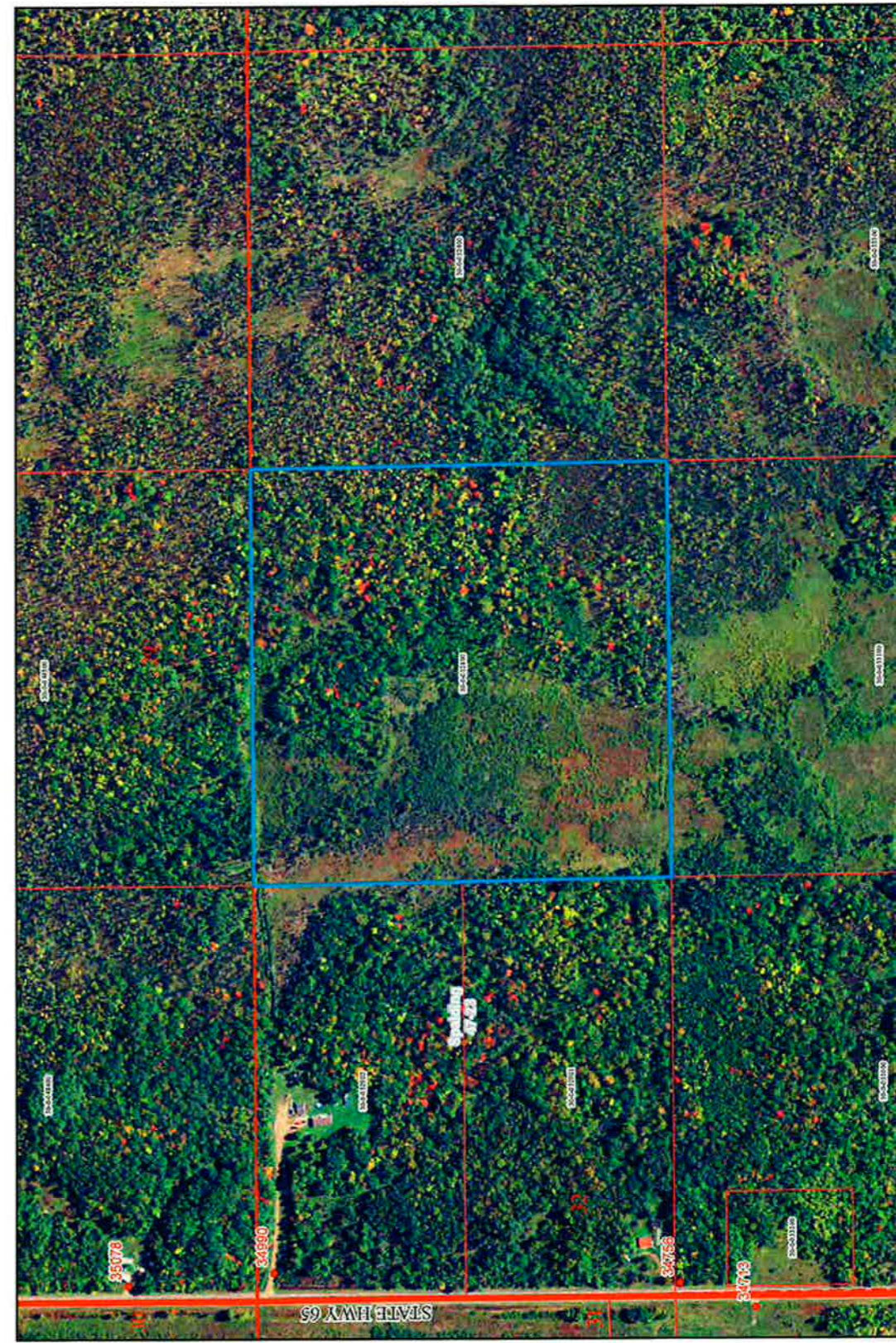
These data are provided on an "AS-IS" basis, without warranty of any type, expressed or implied, including but not limited to any warranty as to their performance, merchantability, or fitness for any particular purpose.





**4-H Pledge**

I pledge my *Head* to clearer thinking,  
 my *Heart* to greater loyalty,  
 my *Hands* to larger service,  
 and my *Health* to better living,  
 for my family, my club, my community, my country and my world.

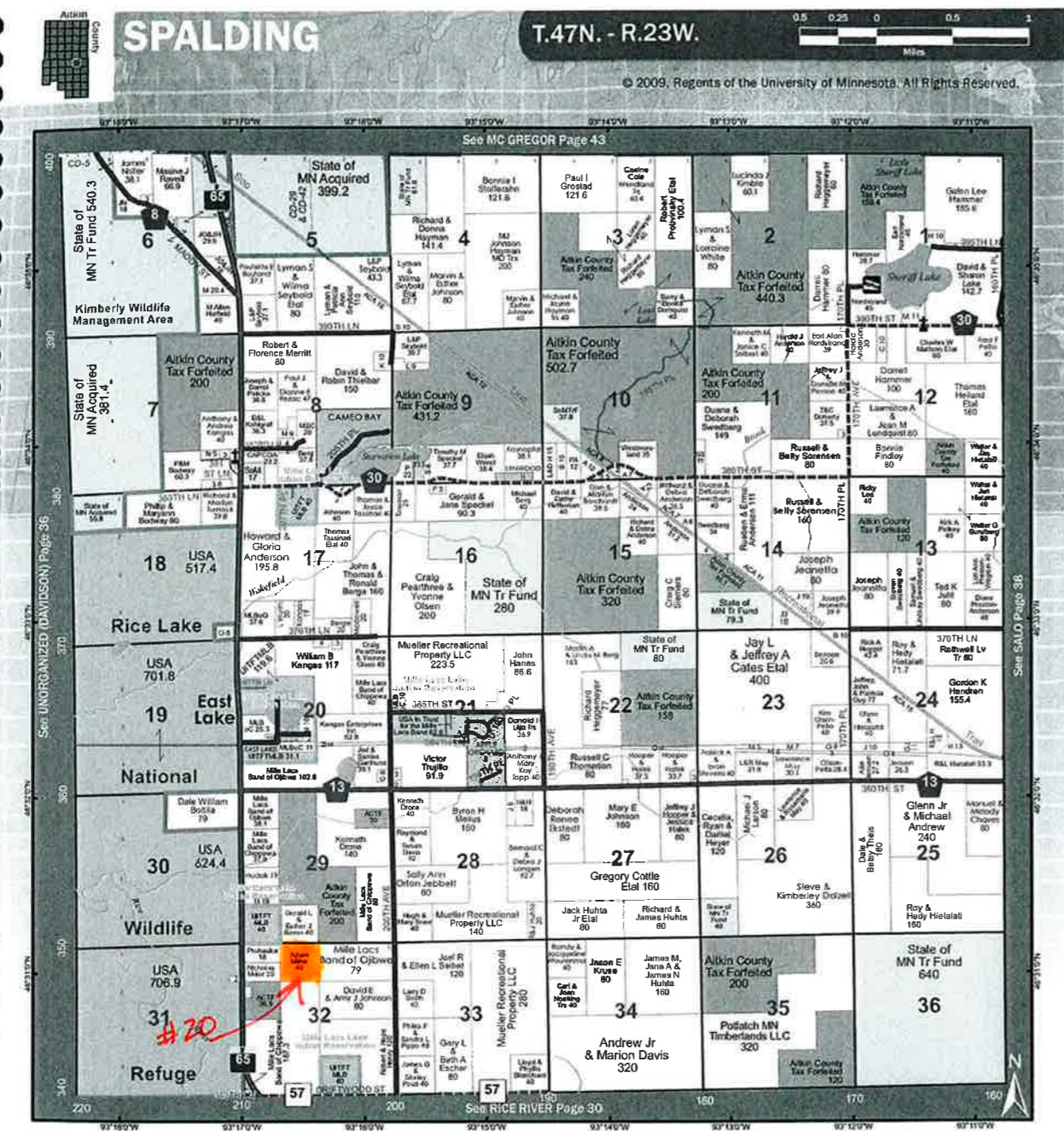


These data are provided on an "AS-IS" basis, without warranty of any type, expressed or implied, including but not limited to any warranty as to their performance, merchantability, or fitness for any particular purpose.

**30-0052800**

11/21/2011 4:12:22 PM

0 95 190 380 Feet  
 Scale: 1:4,800

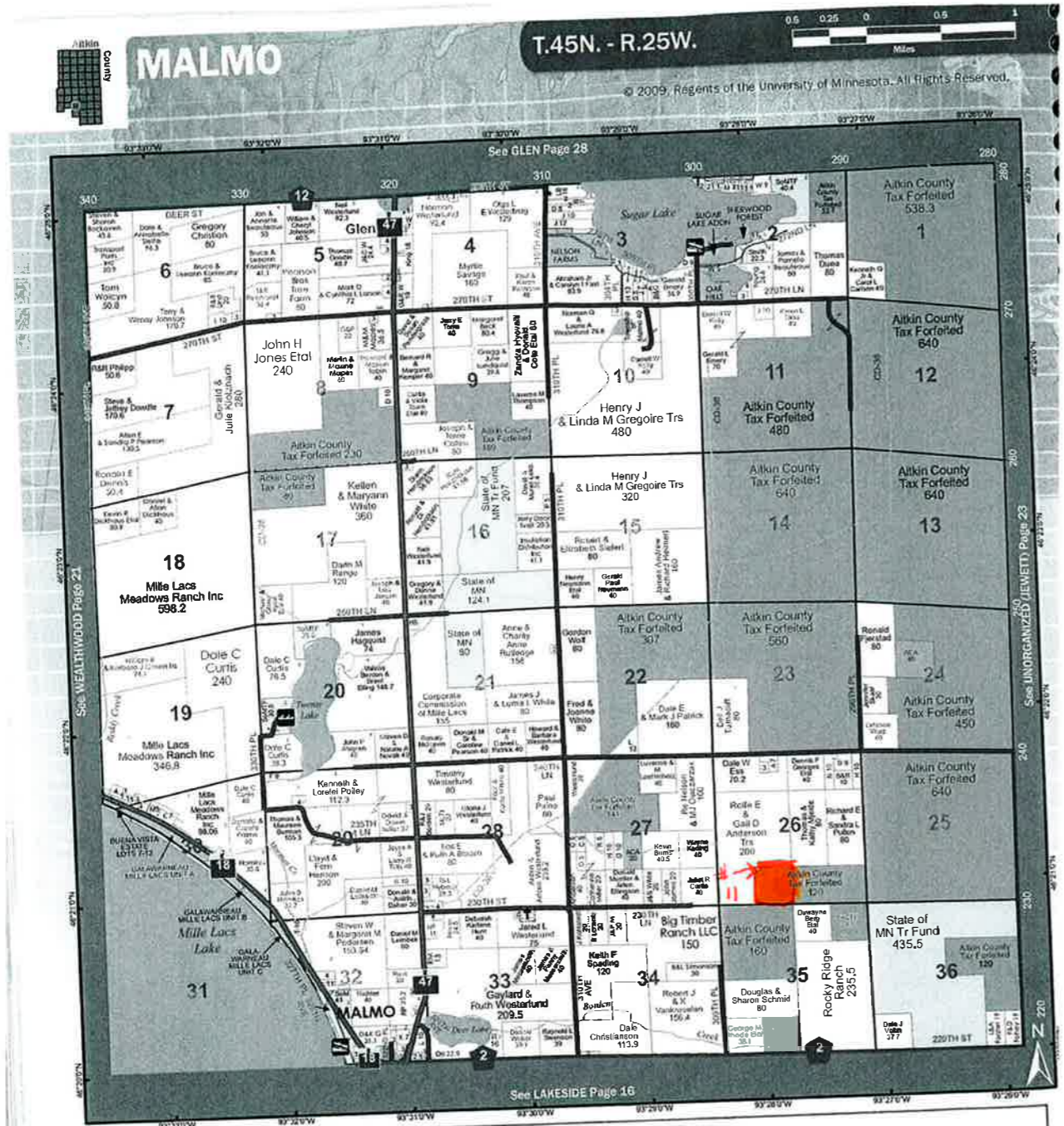


These data are provided on an "AS-IS" basis, without warranty of any type, expressed or implied, including but not limited to any warranty as to their performance, merchantability, or fitness for any particular purpose.

**20-1-062800**

11/21/2011 3:47:24 PM

0 40 80 160 Feet  
Scale: 1:2,000



Kids all over Minnesota learn, grow and have fun in 4-H Clubs and 4-H Adventures. 4-H lets kids try new things, learn new skills and express themselves. 4-H helps kids gain confidence and develop life skills that will help them...

reach their potential!!

**SEE YOUR POTENTIAL**

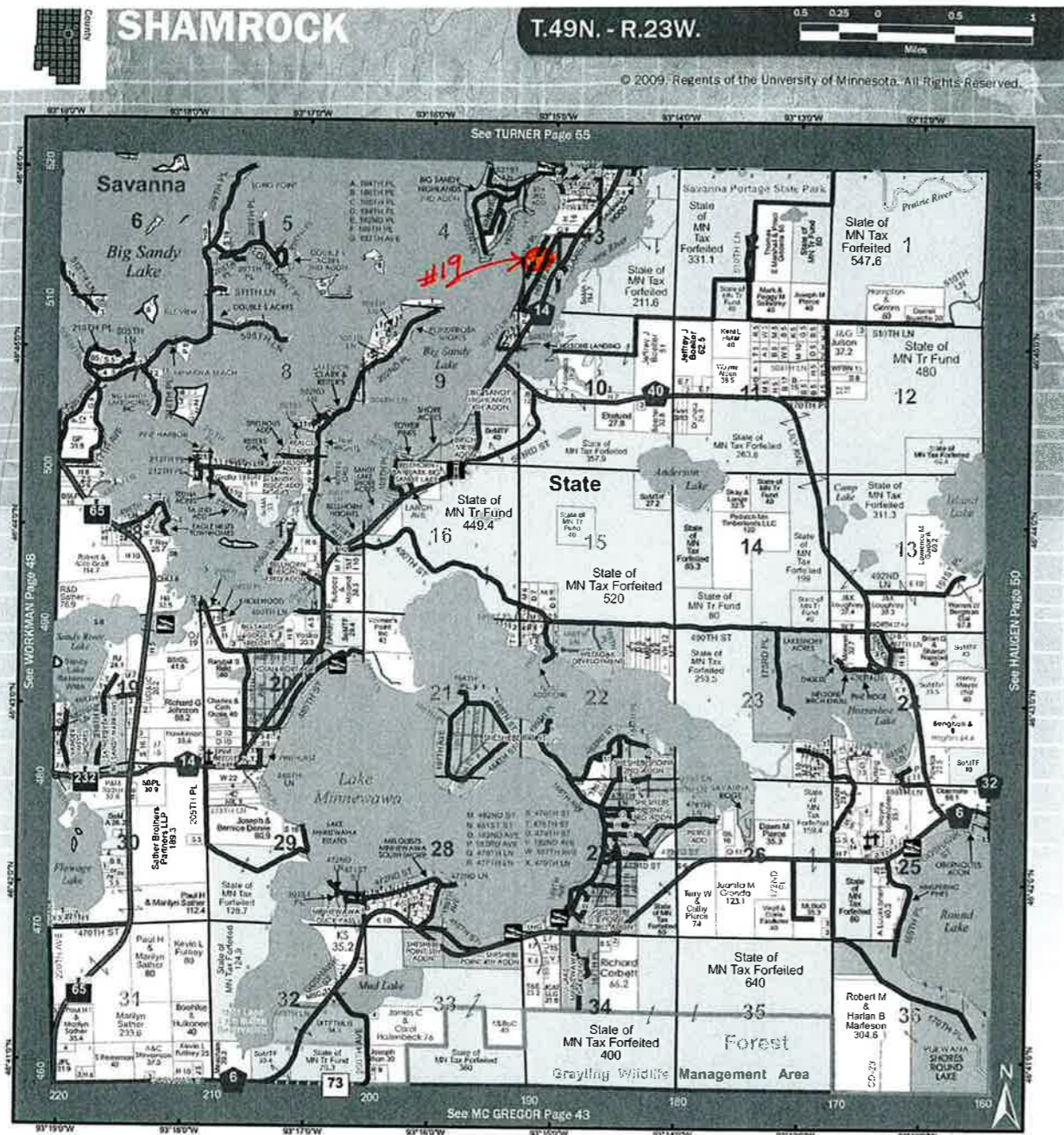


0 20 40 80 Feet  
  
 Scale: 1:1,000

**29-1-355900**

11/21/2011 4:10:53 PM

These data are provided on an "AS-IS" basis, without warranty of any type, expressed or implied, including but not limited to any warranty as to their performance, merchantability, or fitness for any particular purpose.

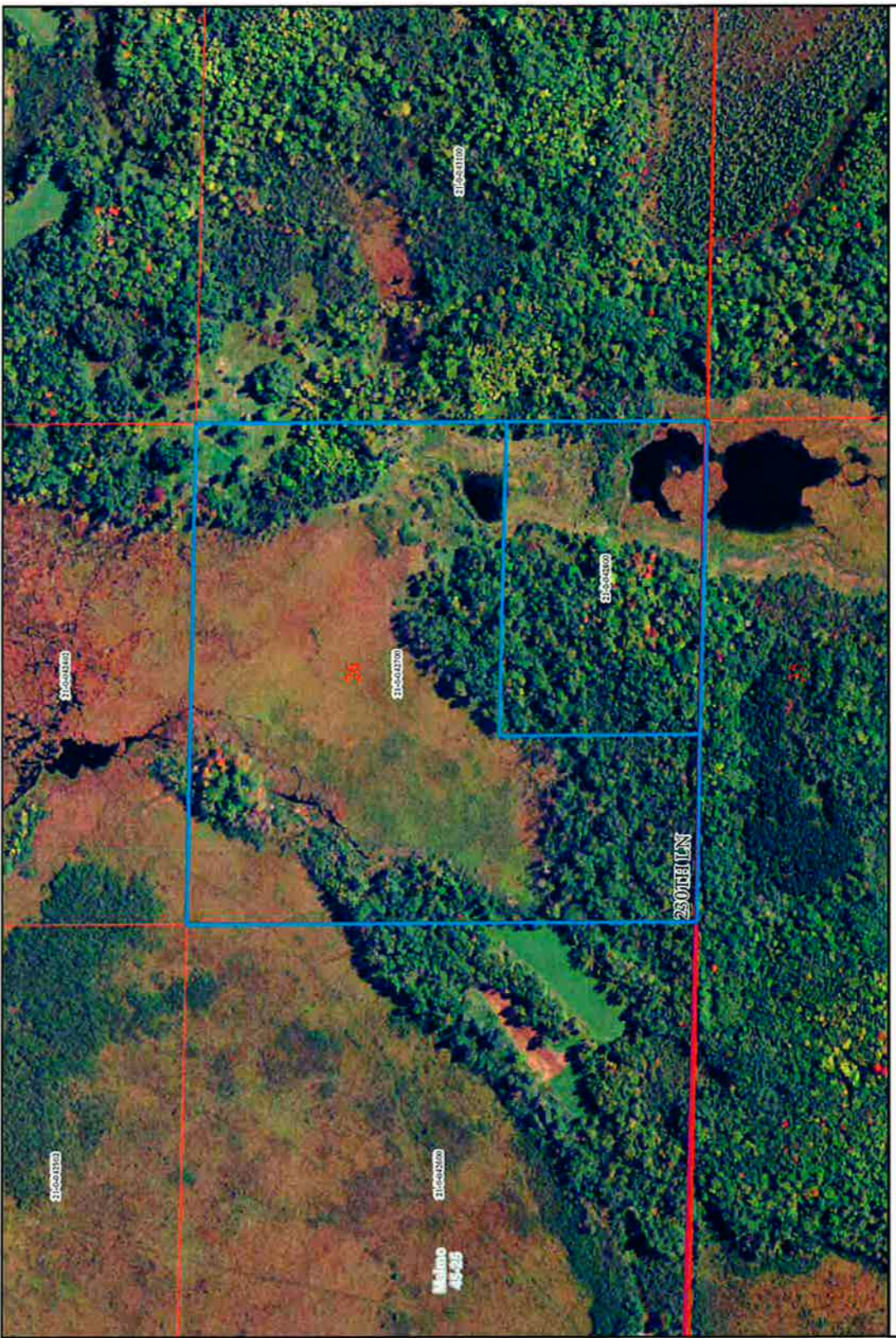


**SHARI S. LARSON**  
**ATTORNEY AT LAW**



McGregor Professional Bldg.  
 Hwys. 65 & 210 • P.O. Box 456  
 McGregor, MN 55760

218-768-4005 • 218-768-4006 Fax  
 email: larsonlw@mcgregormn.com

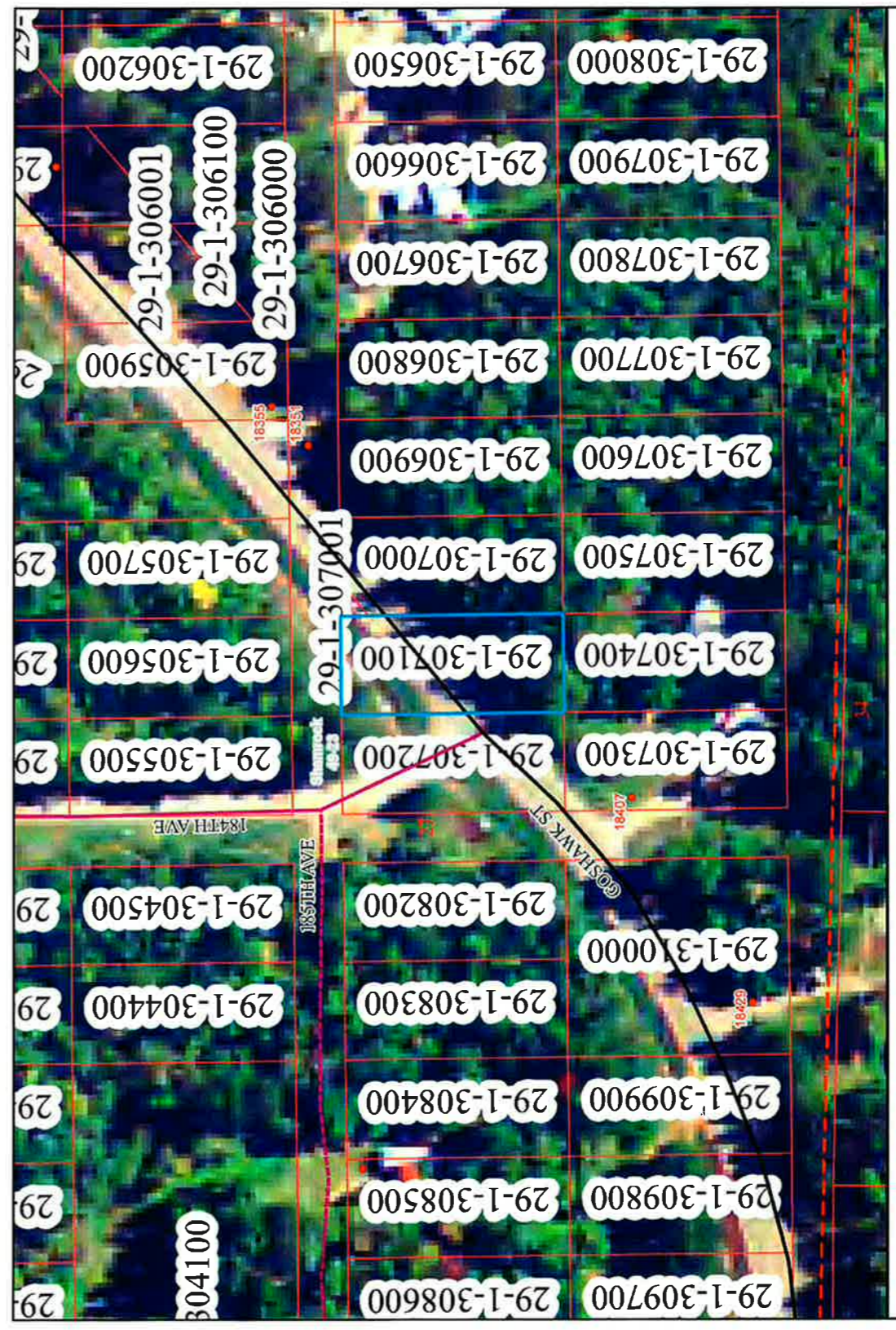
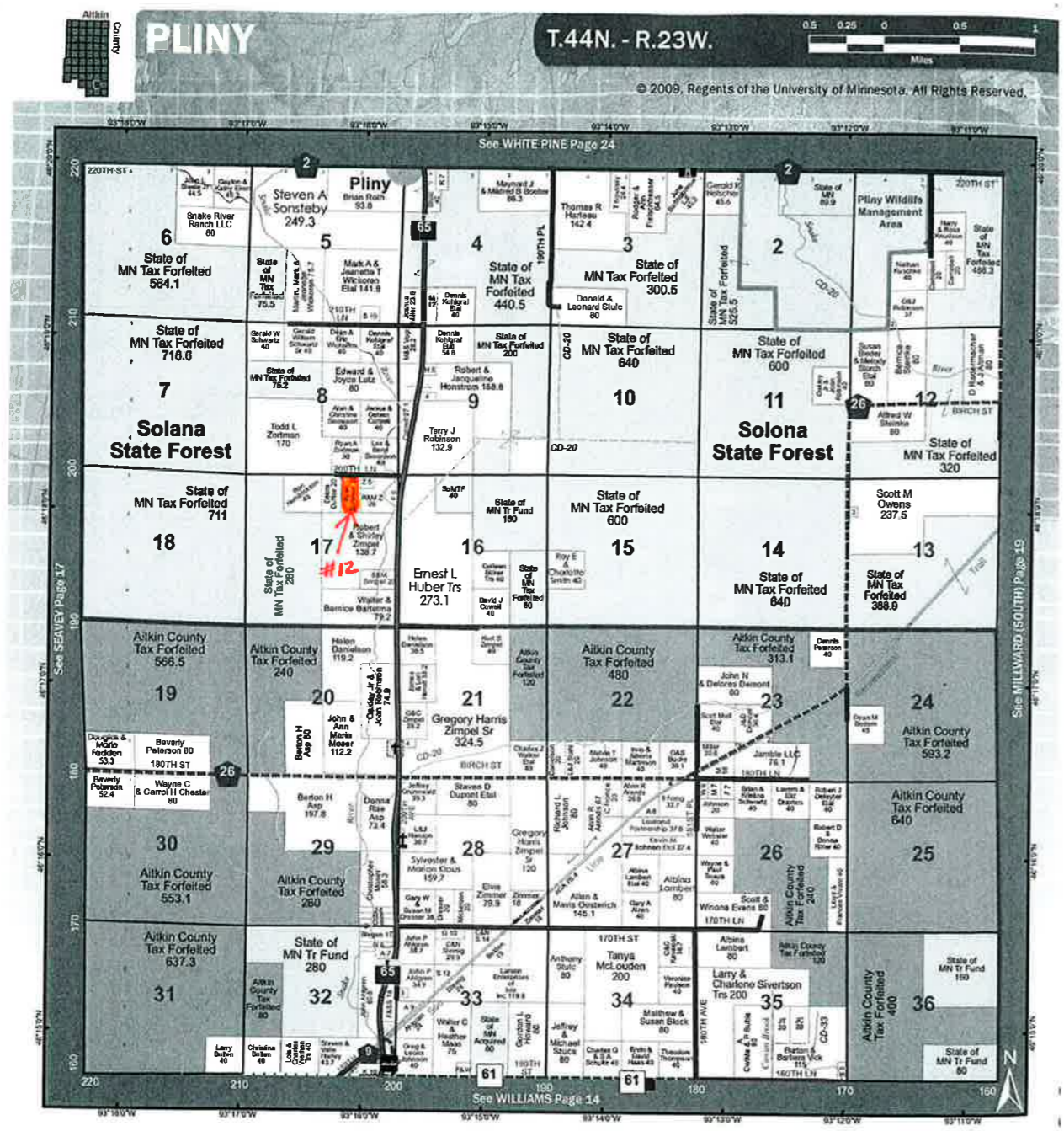


0 80 160 320 Feet  
 Scale: 1:3,987

21-0-042700, 21-0-042800

11/21/2011 3:52:30 PM

These data are provided on an "AS-IS" basis, without warranty of any type, expressed or implied, including but not limited to any warranty as to their performance, merchantability, or fitness for any particular purpose.



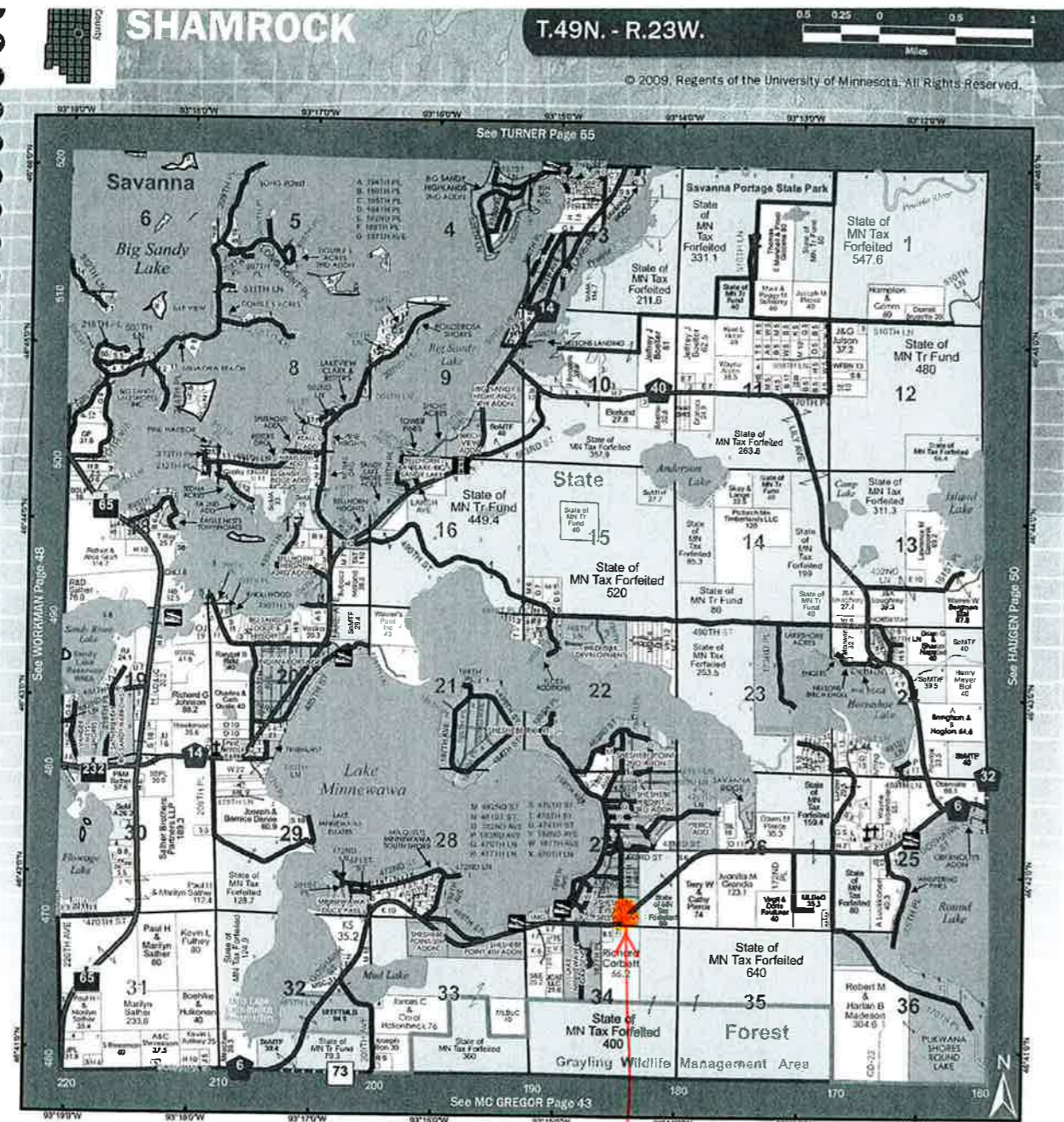
These data are provided on an "AS-IS" basis, without warranty of any type, expressed or implied, including but not limited to any warranty as to their performance, merchantability, or fitness for any particular purpose.

0 20 40 80 Feet

Scale: 1:1,000

**29-1-307100**

11/21/2011 4:09:33 PM

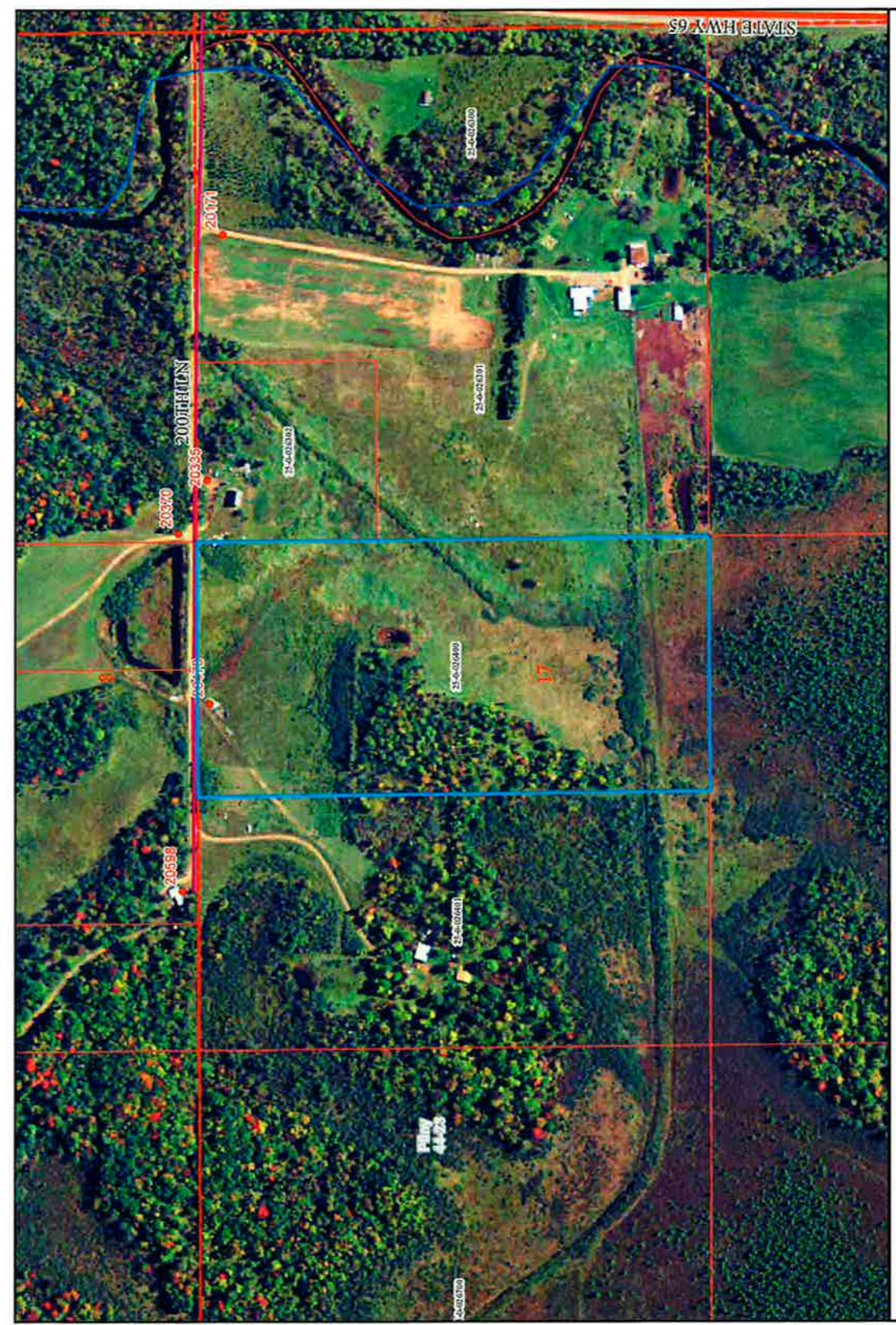


**SHARI S. LARSON**  
ATTORNEY AT LAW



McGregor Professional Bldg.  
Hwys. 65 & 210 • P.O. Box 456  
McGregor, MN 55760

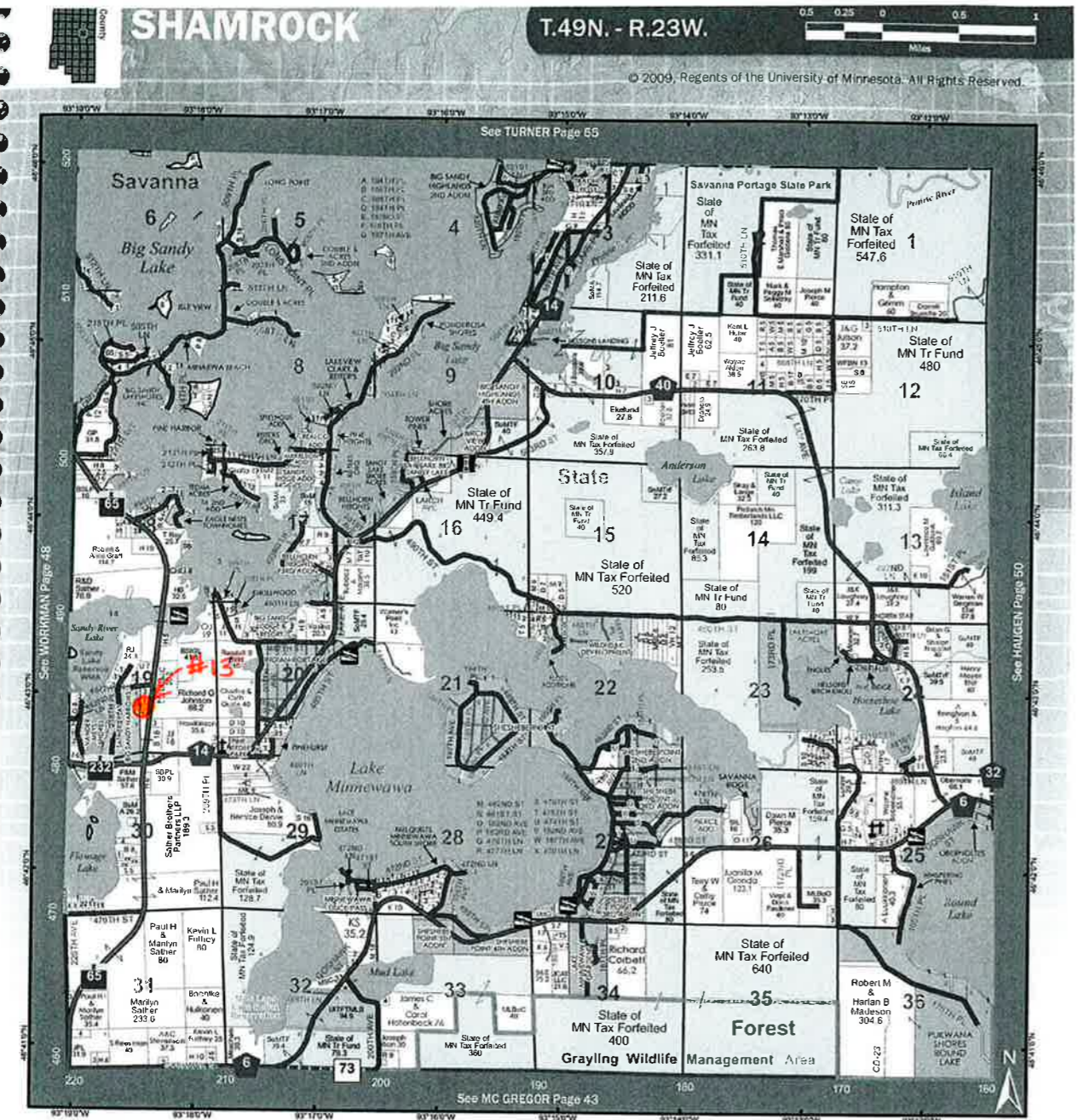
218-768-4005 • 218-768-4006 Fax  
email: larsonlw@mcgregormn.com



These data are provided on an "AS-IS" basis, without warranty of any type, expressed or implied, including but not limited to any warranty as to their performance, merchantability, or fitness for any particular purpose.

**25-0-026400**  
11/21/2011 3:57:03 PM

0 75 150 300 Feet  
Scale: 1:3,892



**SHARI S. LARSON**  
**ATTORNEY AT LAW**



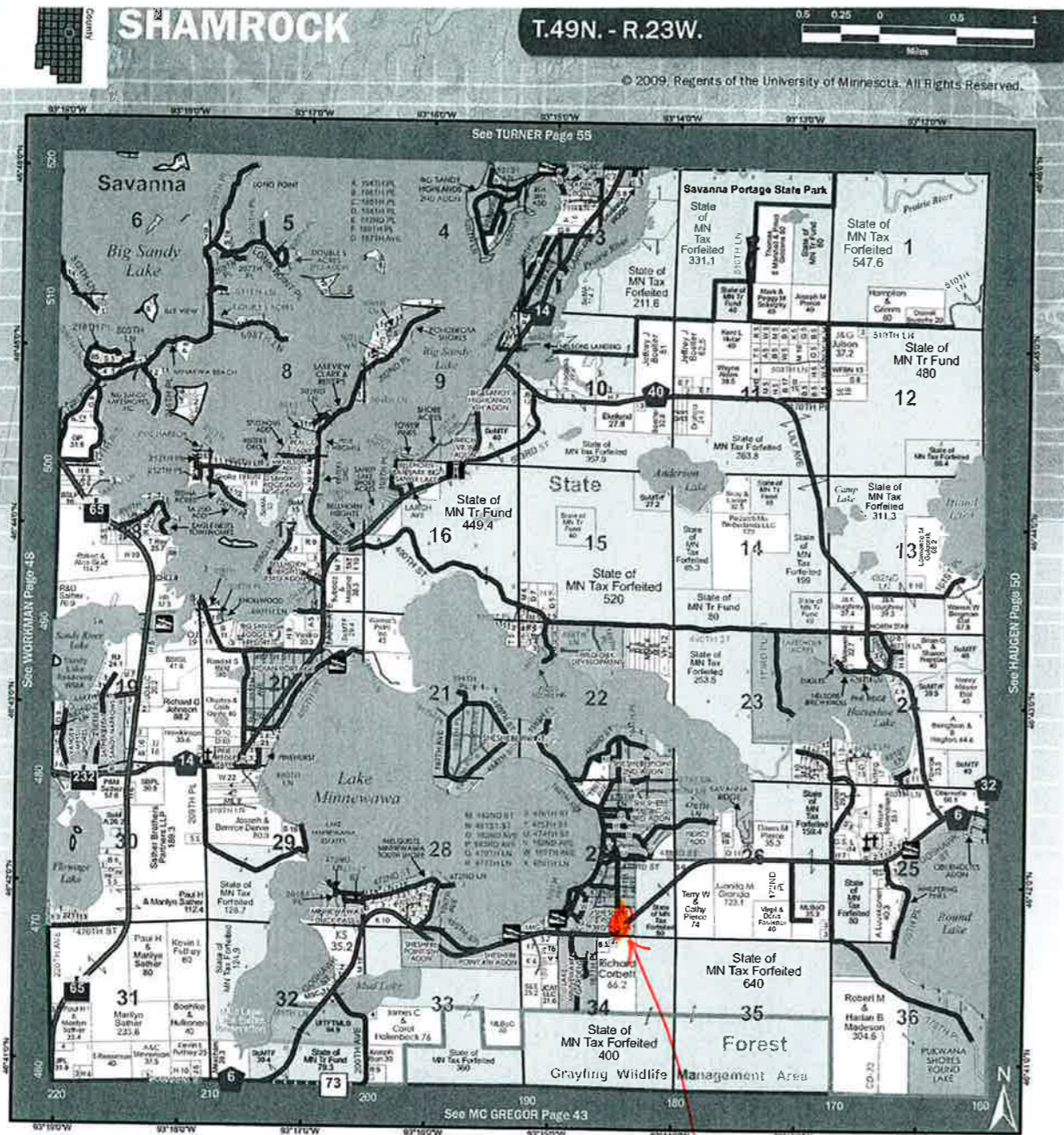
McGregor Professional Bldg.  
 Hwys. 65 & 210 • P.O. Box 456  
 McGregor, MN 55760  
 218-768-4005 • 218-768-4006 Fax  
 email: larsonlw@mcgregormn.com



These data are provided on an "AS-IS" basis, without warranty of any type, expressed or implied, including but not limited to any warranty as to their performance, merchantability, or fitness for any particular purpose.

**29-1-305900**  
 11/21/2011 4:07:41 PM

0 20 40 80 Feet  
 Scale: 1:1,000



**SHARI S. LARSON**  
**ATTORNEY AT LAW**



McGregor Professional Bldg.  
 Hwys. 65 & 210 • P.O. Box 456  
 McGregor, MN 55760

218-768-4005 • 218-768-4006 Fax  
 email: larsonlw@mcgregormn.com



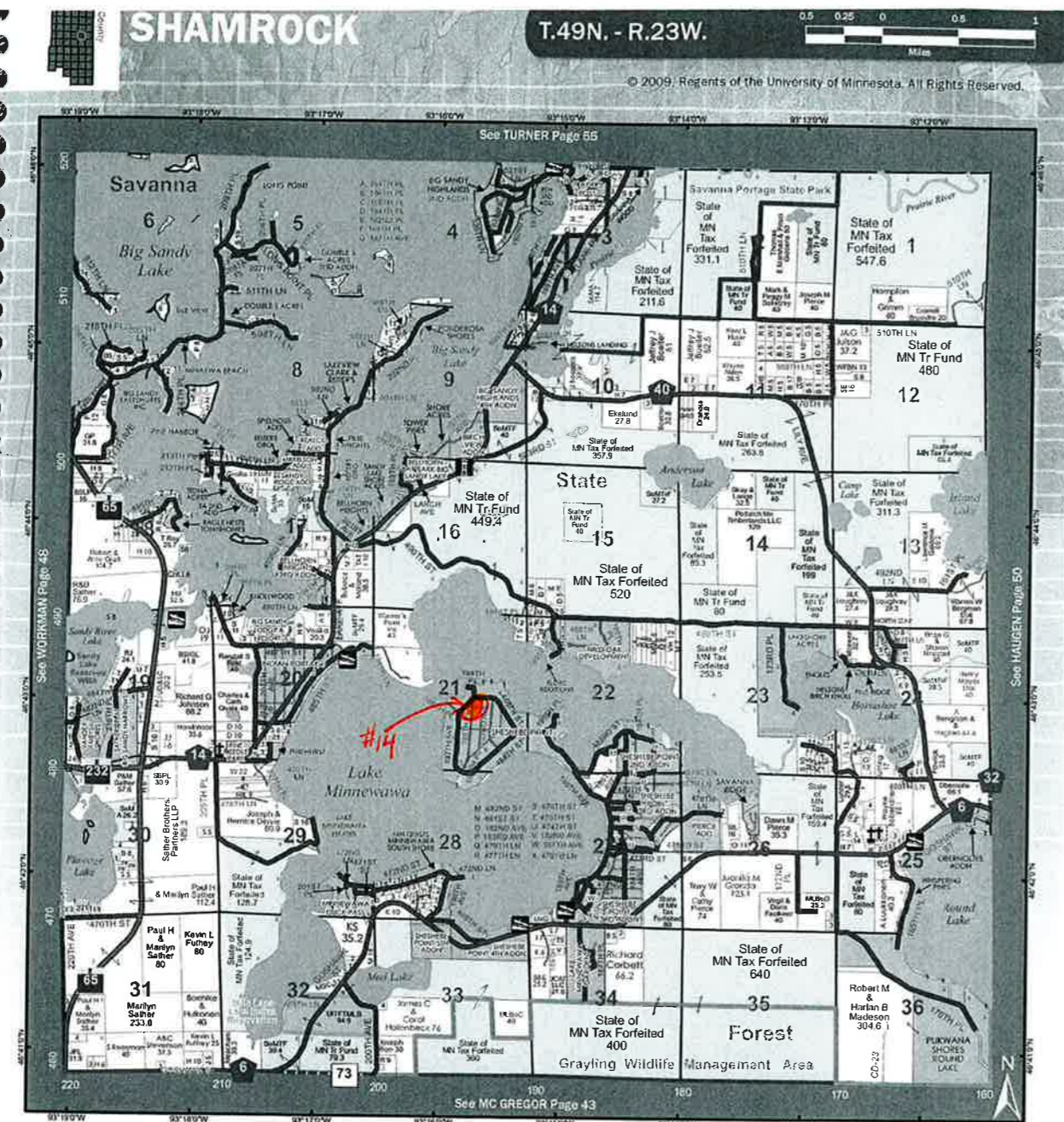
These data are provided on an "AS-IS" basis, without warranty of any type, expressed or implied, including but not limited to any warranty as to their performance, merchantability, or fitness for any particular purpose.

**29-0-043200**

11/21/2011 4:01:39 PM

0 40 80 160 Feet  
 Scale: 1:2,000





**SHARI S. LARSON**  
ATTORNEY AT LAW



McGregor Professional Bldg.  
Hwys. 65 & 210 • P.O. Box 456  
McGregor, MN 55760

218-768-4005 • 218-768-4006 Fax  
email: larsonlw@mcgregormn.com



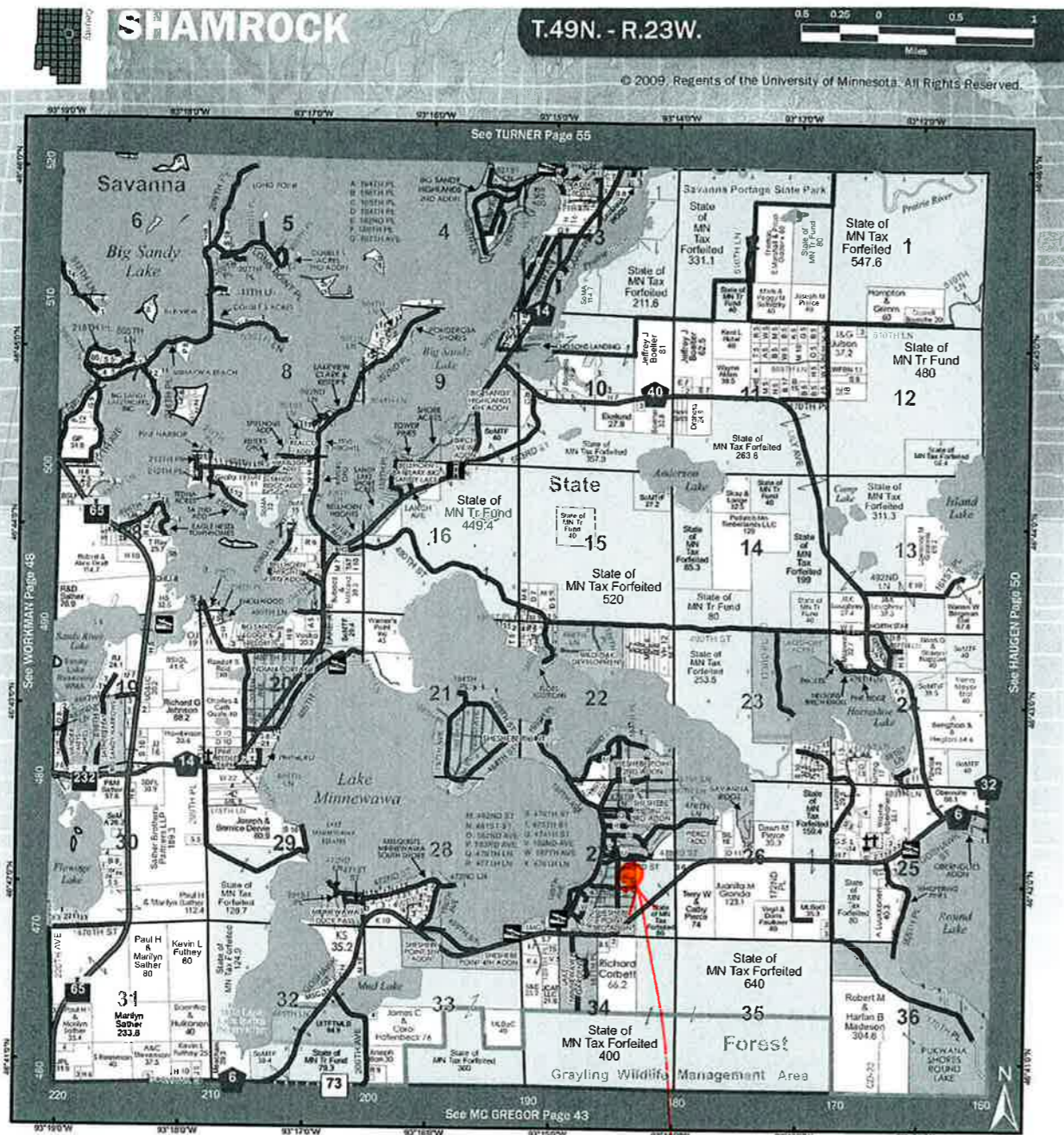
These data are provided on an "AS-IS" basis, without warranty of any type, expressed or implied, including but not limited to any warranty as to their performance, merchantability, or fitness for any particular purpose.

**29-1-293100**

11/21/2011 4:06:17 PM

0 20 40 80 Feet  
Scale: 1:1,000





**SHARI S. LARSON**  
 ATTORNEY AT LAW



McGregor Professional Bldg.  
 Hwys. 65 & 210 • P.O. Box 456  
 McGregor, MN 55760

218-768-4005 • 218-768-4006 Fax  
 email: larsonlw@mcgregormn.com



These data are provided on an "AS-IS" basis, without warranty of any type, expressed or implied, including but not limited to any warranty as to their performance, merchantability, or fitness for any particular purpose.

0 20 40 80 Feet

Scale: 1:1,000

**29-1-271200**

11/21/2011 4:04:41 PM